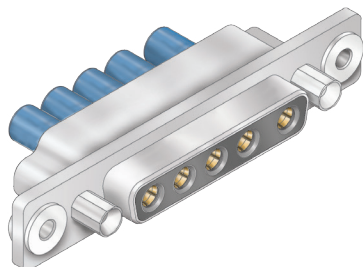


280-059S float mount combo socket connectors for blind mating, crimp termination



Combo HiPer-D® float mount connectors for blind mate applications feature size #20 signal contacts and size #8 power or coax contacts. **Size #8 contacts are ordered separately.** The HiPer-D® features a rugged machined aluminum shell and wire grommet for environmental protection. Size #20 contacts are packaged with connector. Terminate contacts with crimp tools purchased separately. Glass-reinforced thermoset epoxy insulators, copper alloy retention clips. Fluorosilicone rear grommet meets IP67 immersion requirement. 1000 VAC, 7.5 Amps (#20), up to 40 Amps with size #8 power contacts.

How To Order

| How To Order | | | | |
|---------------------------------------|---------------------------------------------------------------------------------------------------------------------------------------------------------------------|-----------------|---------------|--------------------|
| Sample Part Number | | 280-059S | 5-24W7 | ME G |
| Basic Part Number | 280-059S | | | |
| Shell Size-Contact Arrangement | See Shell Size - Contact Arrangements Table | | | |
| Shell Finish | ME = Electroless Nickel MT = Nickel-PTFE JF = Cadmium with Yellow Chromate Z2 = Gold Z1 = Passivated Stainless Steel | | | |
| Mating Hardware | N = No Hardware G = Male Guide Pins B = Female Guide Bushings | | | |

Contact Arrangements

| Shell Size-Contact Arr. | Contact Size and Qty | |
|-------------------------|----------------------|----|
| | #20 | #8 |
| 1-2W2 | | 2 |
| 1-5W1 | 4 | 1 |
| 2-3W3 | | 3 |
| 2-7W2 | 5 | 2 |
| 2-11W1 | 10 | 1 |
| 3-5W5 | | 5 |
| 3-9W4 | 5 | 4 |
| 3-13W3 | 10 | 3 |
| 3-17W2 | 15 | 2 |
| 3-21W1 | 20 | 1 |
| 4-8W8 | | 8 |
| 4-13W6 | 7 | 6 |
| 4-17W5 | 12 | 5 |
| 4-21WA4 | 17 | 4 |
| 4-25W3 | 22 | 3 |
| 4-27W2 | 25 | 2 |
| 5-24W7 | 17 | 7 |
| 5-36W4 | 32 | 4 |
| 5-43W2 | 41 | 2 |
| 5-47W1 | 46 | 1 |

Mating Hardware

| |
|--------------------------------------------------------|
| N No Hardware #8-32 tapped hole |
| B Female Guide Bushings Non-removable |
| G Male Guide Pins Non-removable |

Specifications

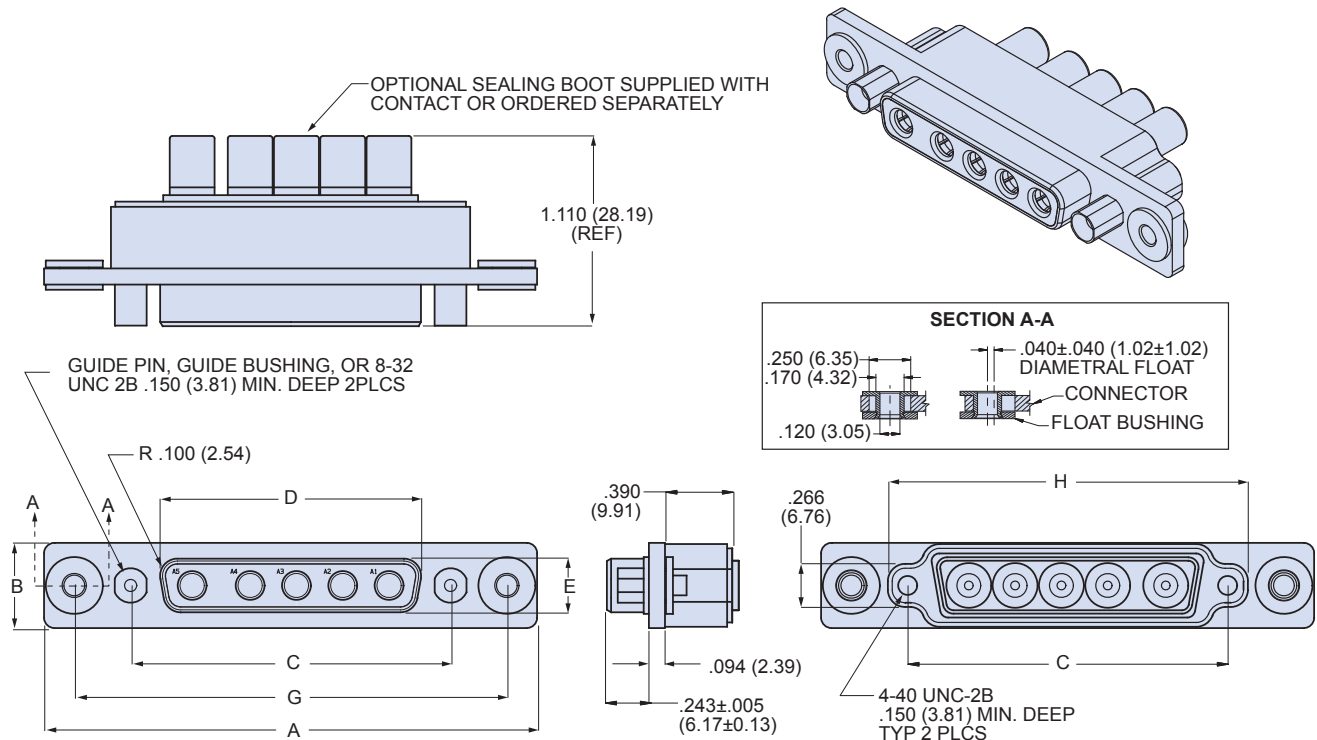
| | |
|-----------------------|--------------------------|
| Current Rating | #20 7.5 AMPS, #8 40 AMPS |
| Test Voltage | 1000 VAC RMS |
| Insulation Resistance | 5000 megohms minimum |
| Operating Temperature | -65° C. to +200° C. |
| Ingress Protection | IP 67 |
| Shock | 300 g. |
| Vibration, Random | 43.92 g. |

Materials and Finishes

| | |
|-----------------|-----------------------------------|
| Shell | Aluminum alloy |
| Contacts | Copper alloy, 50 microinches gold |
| Insulators | Thermoset epoxy |
| Retention Clips | Copper alloy |
| Grommet, O-ring | Fluorosilicone rubber |
| Hardware | 300 series stainless steel |

280-059S float mount combo socket connectors for blind mating, crimp termination

280-059S DIMENSIONS



| Dimensions | | | | | | | | | | | | |
|------------|--------------|--------------|--------------|--------------|---------------|--------------|--------------|--------------|--------------|--------------|--------------|--------------|
| Shell Size | A | | B | | C Basic | | E | | G Basic | | H | |
| | in ± .015 | mm ± 0.38 | in ± .015 | mm ± 0.38 | in. ± .005 | mm ± 0.13 | in ± .005 | mm ± 0.13 | in ± .005 | mm ± 0.13 | in ± .005 | mm ± 0.13 |
| 1 | 1.986 | 50.44 | .494 | 12.55 | .984 | 24.99 | .311 | 7.90 | 1.636 | 41.55 | 1.213 | 30.81 |
| 2 | 2.314 | 58.78 | .494 | 12.55 | 1.312 | 33.32 | .311 | 7.90 | 1.964 | 49.89 | 1.541 | 39.14 |
| 3 | 2.854 | 72.49 | .494 | 12.55 | 1.852 | 47.04 | .311 | 7.90 | 2.504 | 63.60 | 2.081 | 52.86 |
| 4 | 3.502 | 88.95 | .494 | 12.55 | 2.500 | 63.50 | .311 | 7.90 | 3.152 | 80.06 | 2.729 | 69.32 |
| 5 | 3.408 | 86.56 | .600 | 15.24 | 2.406 | 61.11 | .423 | 10.74 | 3.058 | 77.67 | 2.635 | 66.93 |

NOTES

- See [About Series 28 HiPer-D® Shell Plating Options](#) for additional shell material and finish options. Glenair offers the industry's widest selection of plating options with no minimum order quantities or setup charges.
- For panel cutouts, refer to [Panel Cutouts and Printed Circuit Board Footprints](#).
- Connectors are supplied with size #20 crimp contacts per M39029. Contacts are not installed. Refer to [HiPer-D® Contacts and Tools](#) section for contact part numbers, specifications, crimp tool information, and insertion/extraction tools.
- Size 8 contacts are ordered separately.** Refer to [HiPer-D® Contacts and Tools](#) section for contact ordering information, specifications, crimp tool information, and insertion/extraction tools.
- Combo HiPer-D® connectors meet the applicable requirements of MIL-DTL-24308 and are intermateable with standard non-environmental D Subminiature connectors with corresponding contact arrangements and type. **Size 8 contacts from other manufacturers cannot be installed in HiPer-D® connectors.**
- Additional electrical, mechanical and environmental specifications are listed in [HiPer-D® Product Specification](#).