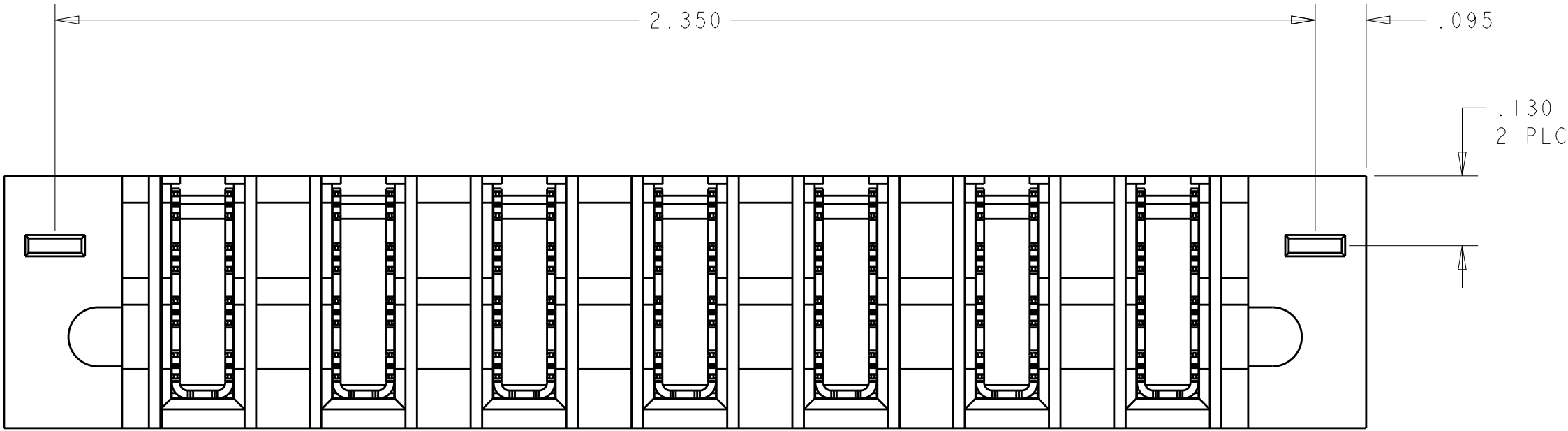
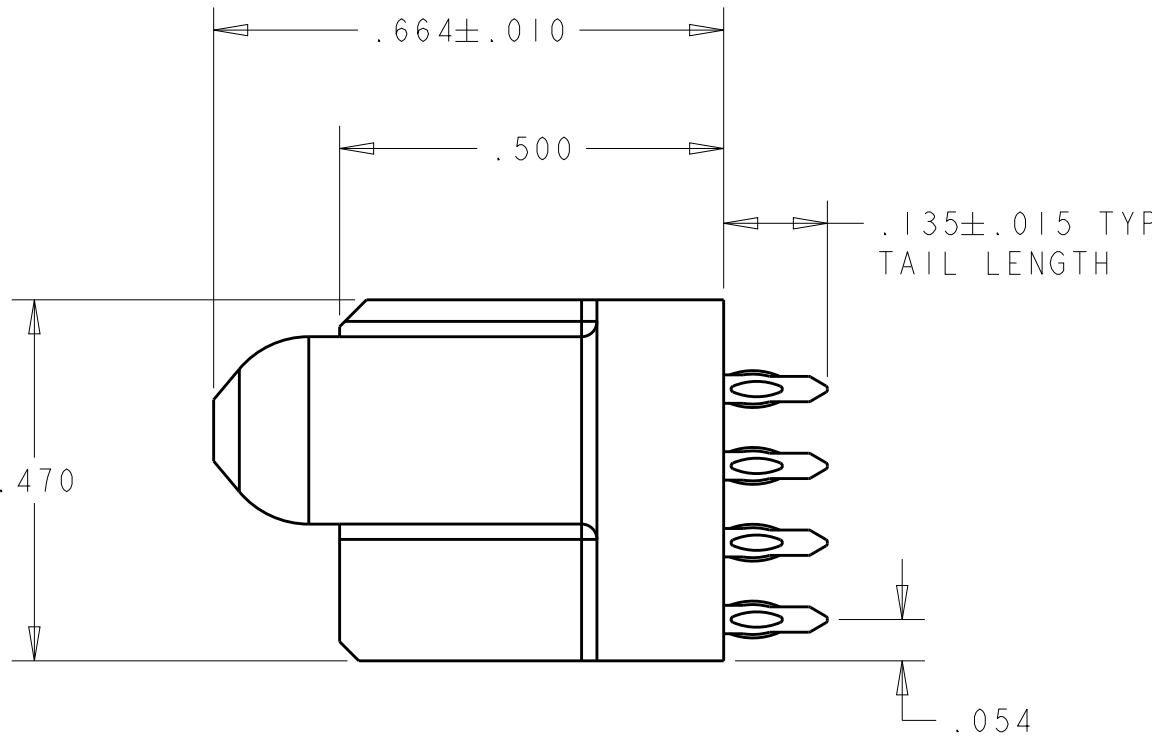
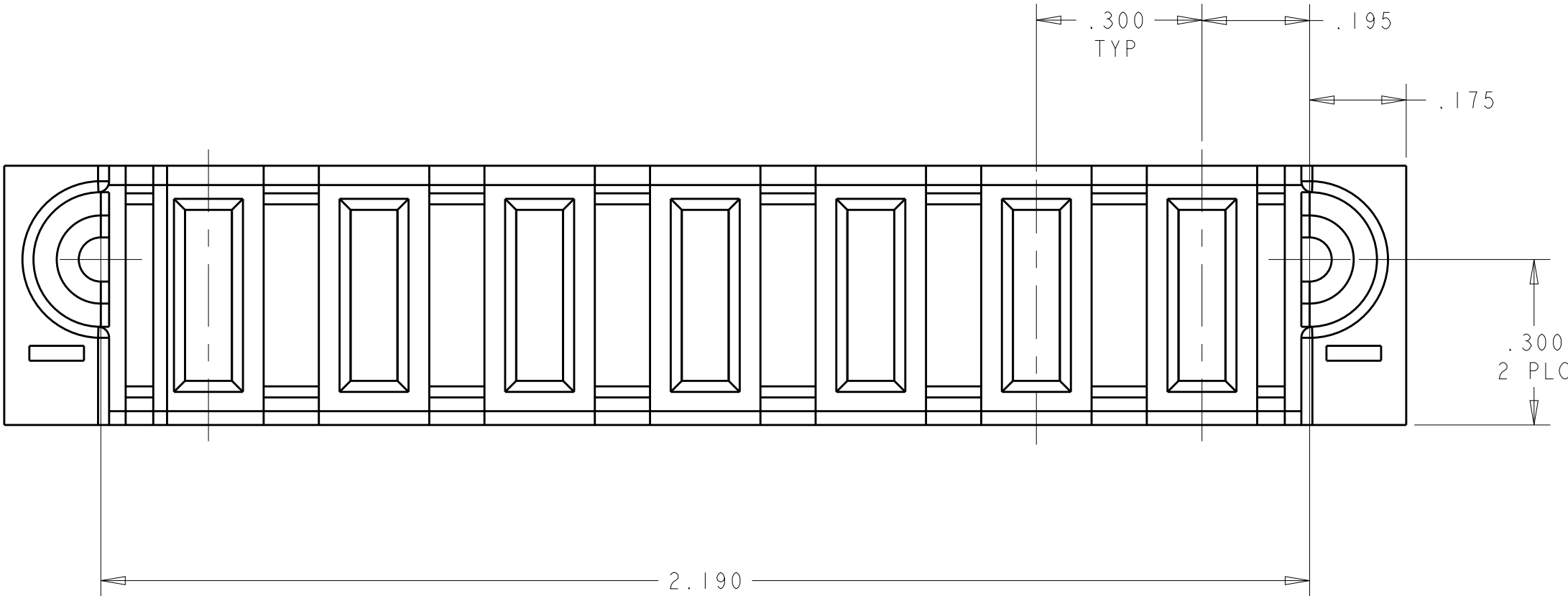
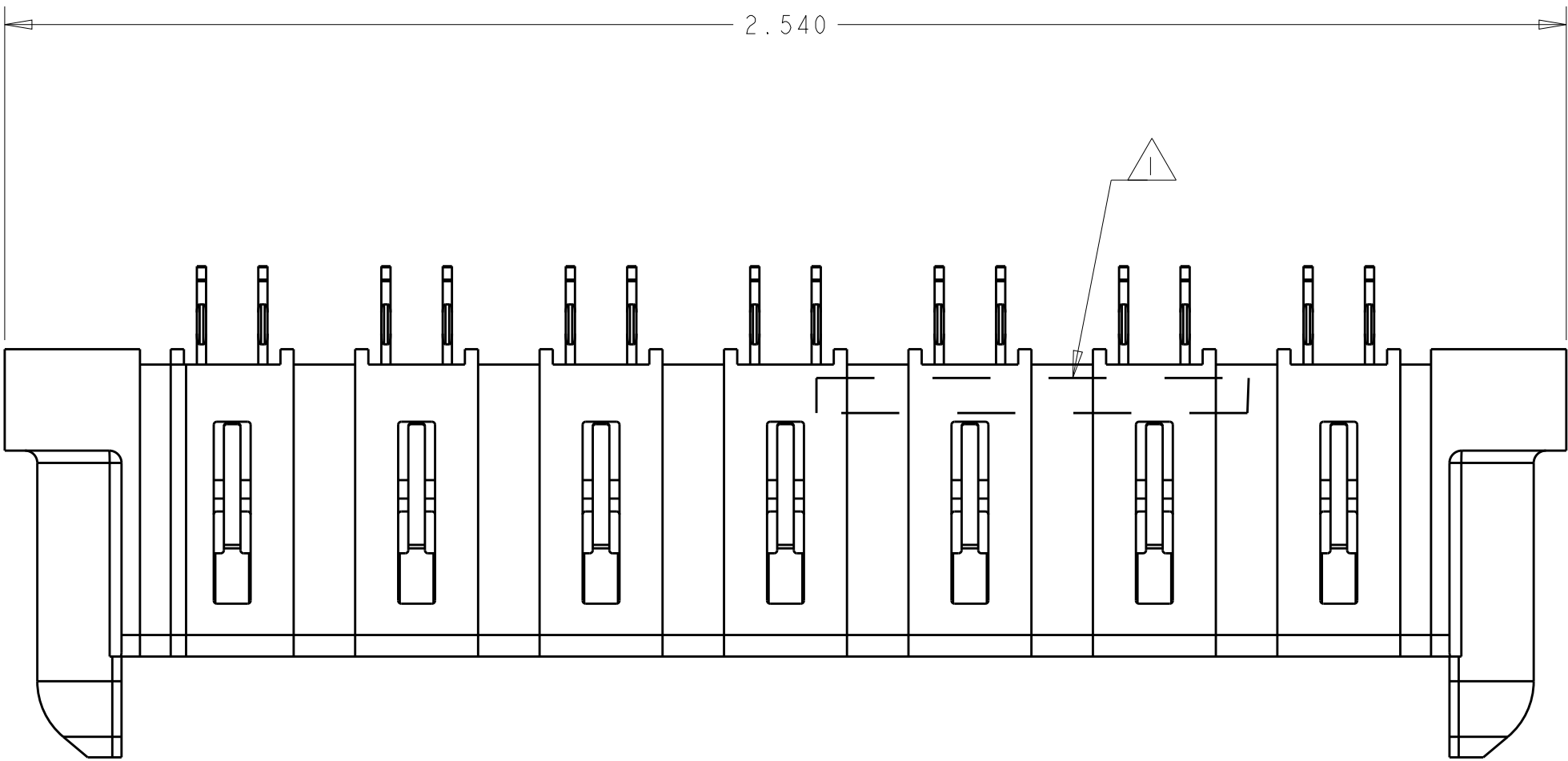


| LOC | | DIST | | REVISIONS | | | | |
|-----|-----|-------------|----------|-----------|------|--------|------|----|
| P | LTR | DESCRIPTION | | | DATE | DWN | APVD | |
| | | A | RELEASED | | | 6-2-17 | CT | DH |
| | | | | | | | | |
| | | | | | | | | |



- 1 "TE", PART NUMBER AND DATE CODE TO BE MARKED IN AREA SHOWN
- 2 MATERIAL: HOUSING - GLASS FILLED HIGH TEMP THERMO PLASTIC,UL94 V-O,BLACK.
POWER CONTACT - HIGH CONDUCTIVITY COPPER ALLOY
- 3 CONTACT PLATING: POWER CONTACTS - .000050 MIN Ni UNDER ALL
.000050 MIN Au ON CONTACT AREA
.000005 MIN Au AT PCB INTERFACE
- 4 MECHANICAL CONNECTOR KEEP OUT ZONE
- 5 DATUM AND BASIC DIMENSIONS ESTABLISHED BY CUSTOMER
- 6 PCB - ALL HOLE DIAMETERS ARE FINISHED HOLE SIZES
- 7 PCB - 0.0453 ±.0010 DRILLED HOLES PLATED WITH .0003 MIN Sn
OVER .001 TO .003 Cu PLATING TO ACHIEVE A .040 ±.030 HOLE



| | |
|-------------|-------------|
| 7ACP | 2314581-1 |
| DESCRIPTION | PART NUMBER |

| | | | | |
|--|---|-------------------------------|---|--|
| THIS DRAWING IS A CONTROLLED DOCUMENT. | | DWN C.C.THOMAS 1-10-16 | <div><div>TE</div><div>TE Connectivity</div></div> <div>VER RECEP ASSEMBLY SHROT GUIDES, PRESS FIT MULTI-BEAM XLE</div> | |
| DIMENSIONS: INCHES | | CHK D.HOANG 1-10-17 | | |
| | TOLERANCES UNLESS OTHERWISE SPECIFIED: 0 PLC ±.01 1 PLC ±.01 2 PLC ±.01 3 PLC ±.005 4 PLC ±.0020 ANGLES ±2° | APVD D.HOANG 1-10-17 | NAME | |
| | | PRODUCT SPEC 108-2292 | SIZE | |
| MATERIAL 6 | | APPLICATION SPEC 114-13038 | CAGE CODE | |
| | | WEIGHT - | DRAWING NO | |
| CUSTOMER DRAWING | | A100779C=2314581 | | |
| | | RESTRICTED TO - | | |
| | | SCALE | | |
| | | 2:1 | | |
| | | SHEET | | |
| | | 1 OF 2 | | |
| | | REV A | | |

Technical drawing of a rectangular plate with a grid of holes. The drawing includes the following dimensions and tolerances:

- Overall width: 2.570 MIN
- Overall height: .610 MIN
- Distance from top edge to first row of holes: .100 TYP
- Distance between rows of holes: .129
- Distance from right edge to last row of holes: .100 7 PLC
- Distance from right edge to last column of holes: .335
- Distance between columns of holes: .300 6 PLC
- Hole diameter: $\varnothing .040 \pm .003$ 6 7
- Feature control frame: $\varnothing .004$ M V U
- Feature control frame: 56 PLC
- Feature control frame: 4
- Feature control frame: 5 BSC
- Feature control frame: 5 -V-
- Feature control frame: 5 -U-

4805 (3/11)