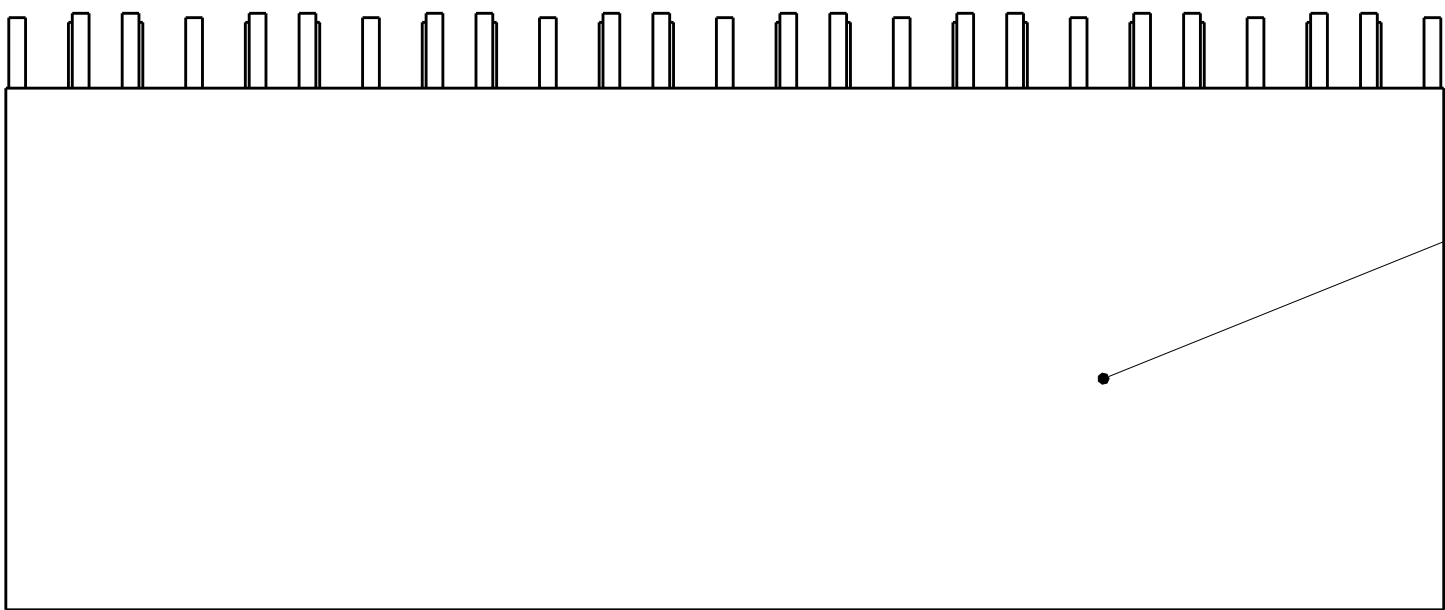
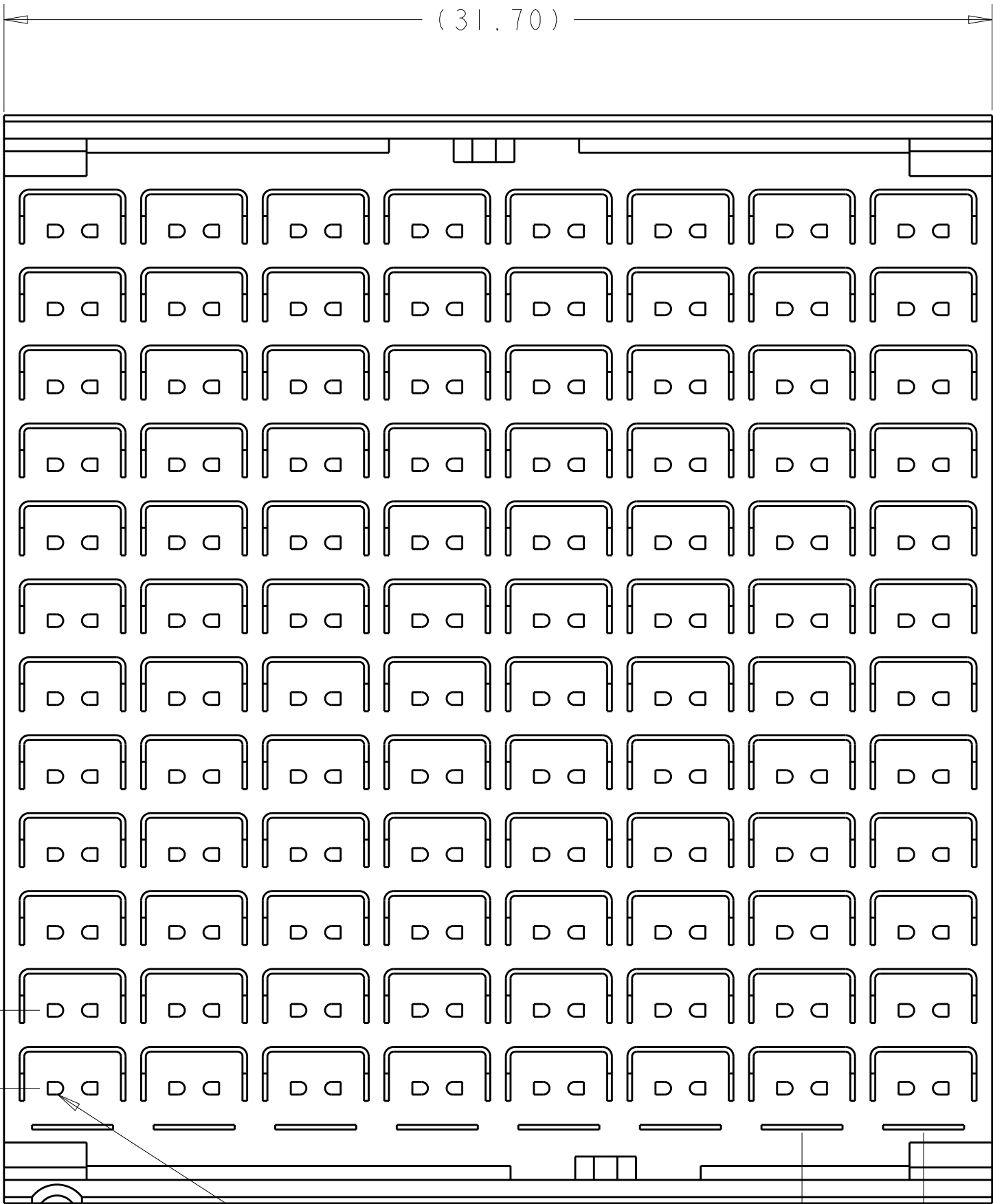


REVISIONS					
P	LTR	DESCRIPTION	DATE	DWN	APVD
A		REVISED PER ECO-16-000464	09MAR2016	AP	RP
B		REVISED PER ECO-17-003153	14MAR2017	AP	RP
C		REVISED PER ECO-19-004494	25MAR2019	AP	RP

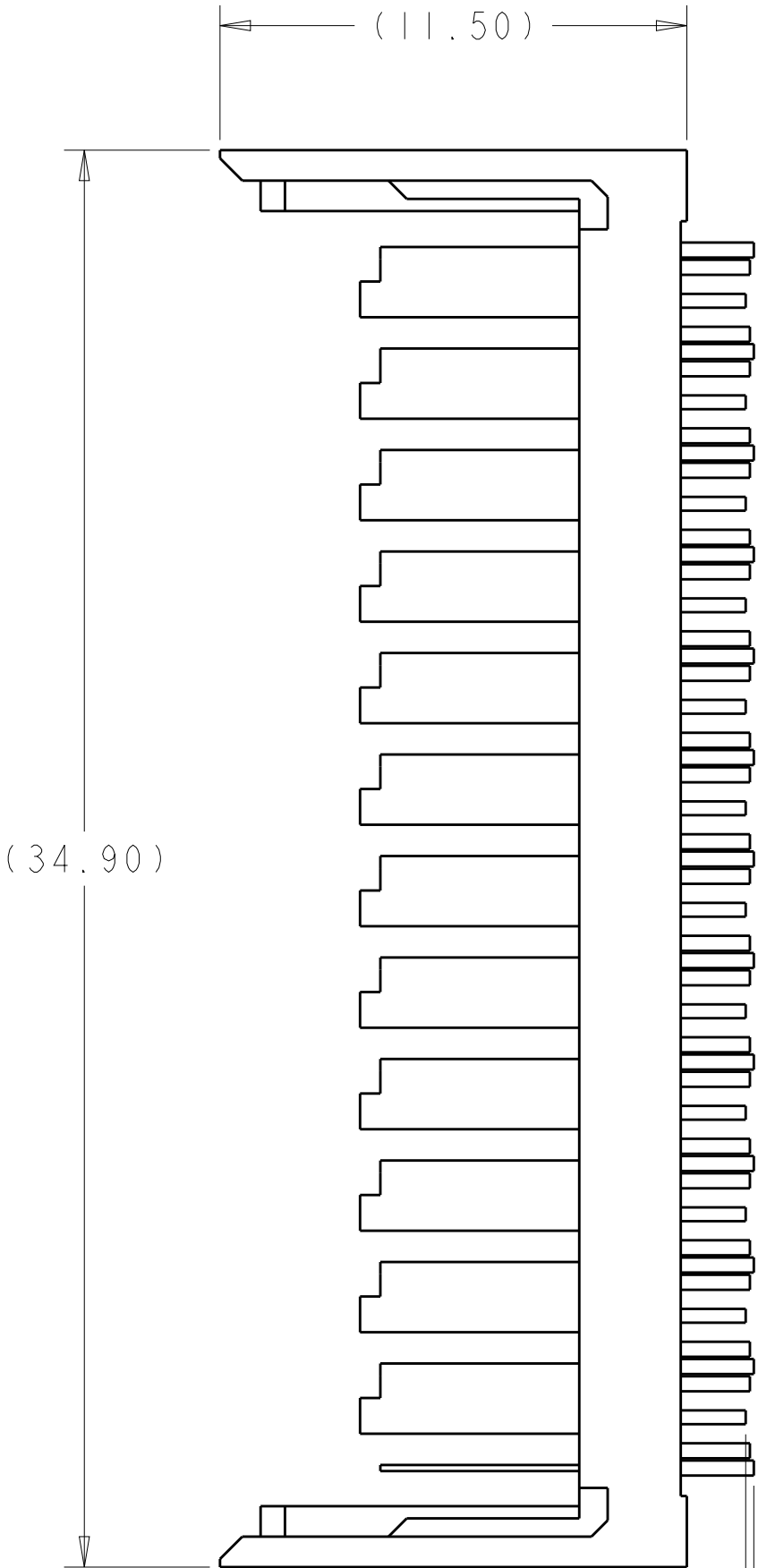


6



SIGNAL CONTACT A2

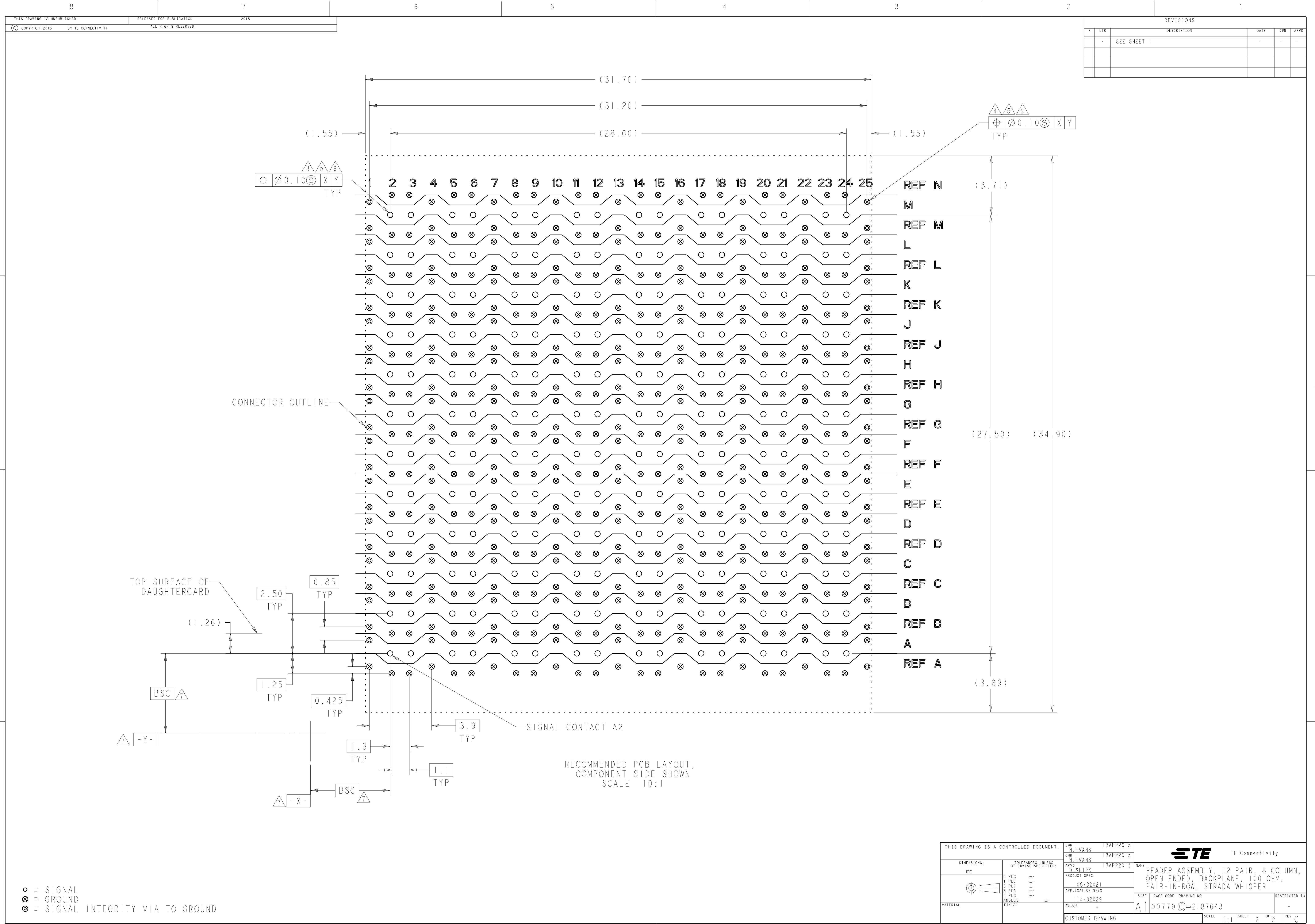
POSITION A1
CORNER INDICATOR



- △ MATERIAL:
HOUSING: THERMOPLASTIC, UL 94V-0, BLACK
CONTACTS AND SHIELDS: COPPER ALLOY
- △ FINISH:
- CONFORMS TO THE REQUIREMENTS OF TE PRODUCT SPECIFICATION 108-32021 BASED ON TELCORDIA GR-1217-CORE FOR SYSTEM QUALITY LEVEL III, APPLICATIONS IN CONTROLLED ENVIRONMENTS (CENTRAL OFFICE).
- COMPLIANT PIN AREA: 0.5µm MIN MATTE TIN.
- △ SIGNAL PLATED THRU HOLE REQUIREMENTS:
FINISHED HOLE = Ø0.34±0.05
HOLE SIZE PRIOR TO PLATING = Ø0.420±0.025
COPPER THICKNESS = 0.025 MIN
IMMERSION TIN IF APPLICABLE = 0.00095 REF
- △ GROUND AND SI VIA PLATED THRU HOLE REQUIREMENTS:
FINISHED HOLE = Ø0.37±0.05
HOLE SIZE PRIOR TO PLATING = Ø0.450±0.025
COPPER THICKNESS = 0.025 MIN
IMMERSION TIN IF APPLICABLE = 0.00095 REF
- △ PTH DIMENSIONS APPLY TO THE TOP 1.00mm OF THE PCB THICKNESS FROM THE CONNECTOR MOUNTING SIDE.
- △ CONNECTOR MARKED WITH PART NUMBER, DATE CODE, AND "100 OHM" IN APPROXIMATE AREA SHOWN.
- △ DATUMS AND BASIC DIMENSIONS ESTABLISHED BY CUSTOMER.
8. CONTACT PRODUCT ENGINEERING FOR LAYOUTS WHEN STACKING CONNECTORS.
- △ APPLIES TO FINISHED HOLE DIAMETER.
- △ PACKAGED IN TRAYS.

△	2187643-2
-	2187643-1
REMARKS	PART NO

THIS DRAWING IS A CONTROLLED DOCUMENT.		DWN N. EVANS 13APR2015	TE Connectivity	
DIMENSIONS:		CHK N. EVANS 13APR2015		
mm	TOLERANCES UNLESS OTHERWISE SPECIFIED:	APVD D. SHIRK 13APR2015	NAME	
0 PLC ±	1 PLC ±	PRODUCT SPEC	HEADER ASSEMBLY, 12 PAIR, 8 COLUMN, OPEN ENDED, BACKPLANE, 100 OHM, PAIR-IN-ROW, STRADA WHISPER	
2 PLC ±	3 PLC ±	APPLICATION SPEC		
4 PLC ±	ANGLES ±	114-32029	SIZE	CAGE CODE DRAWING NO
MATERIAL	FINISH	WEIGHT	A100779	C=2187643
△	△	CUSTOMER DRAWING	SCALE	6:1
		SHEET		1 OF 2
		REV		C



REVISIONS				
P	LTR	DESCRIPTION	DATE	OWN
-	-	SEE SHEET 1	-	-

THIS DRAWING IS A CONTROLLED DOCUMENT.		DWN N.EVANS 13APR2015		
DIMENSIONS:		CHK N.EVANS 13APR2015		
mm	TOLERANCES UNLESS OTHERWISE SPECIFIED:	APVD D.SHIRK 13APR2015	NAME	
	0 PLC	±	PRODUCT SPEC	
	1 PLC	±	108-32021	
	2 PLC	±	APPLICATION SPEC	
	3 PLC	±	114-32029	
MATERIAL	FINISH	WEIGHT	SIZE	
CUSTOMER DRAWING		-	A100779C=2187643	
SCALE		1:1	SHEET 2 OF 2	
			REV C	