

REV. C

PLOT SCALE: .125/ DIMSCALE: .1000

DIMENSIONS ARE IN INCHES

UNLESS OTHERWISE NOTED

TOLERANCES ARE:

ONE PLACE DECIMALS  $\pm .1$  [2.54] THREE PLACE DECIMALS  $\pm .005$  [.13]  
 TWO PLACE DECIMALS  $\pm .01$  [.25] FOUR PLACE DECIMALS  $\pm .0020$  [.051]

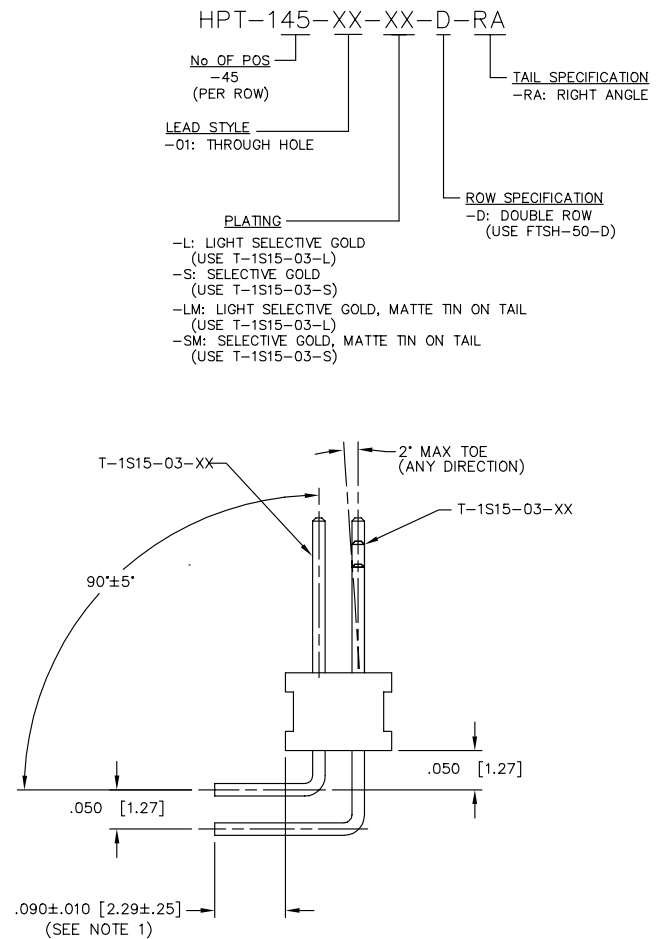
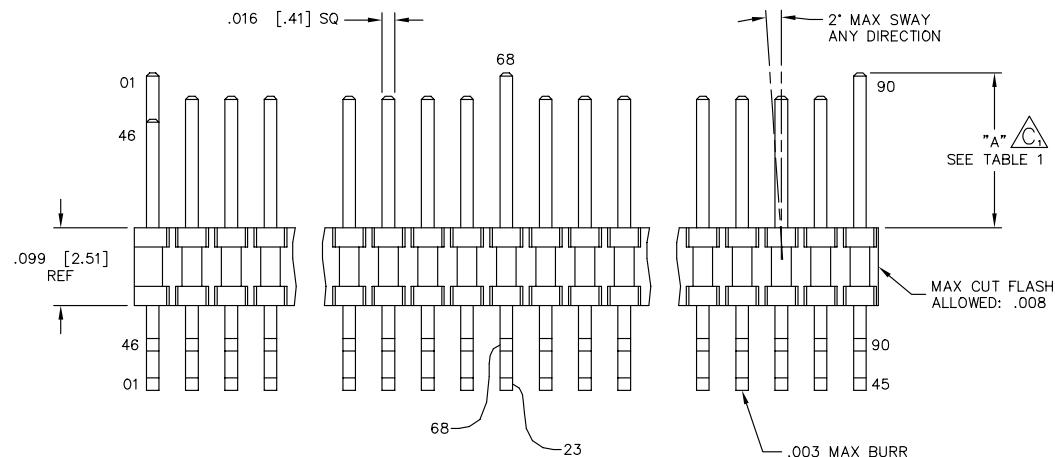
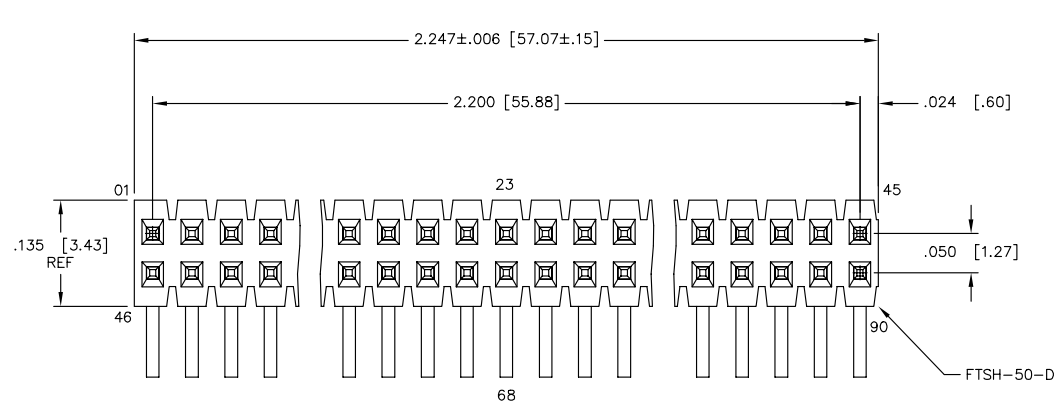
ANGLES  
 $\pm 2^\circ$

TITLE:

.050 x .050 C.L.  
 HOT PLUGGABLE  
 TERMINAL STRIP

DWG NO:

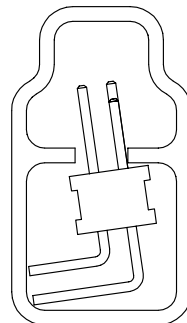
HPT-145-XX-XX-D-RA  
 SHEET 1 OF 1



## PACKAGING VIEW

PT-1-24-01-09  
 TP-24

PARTS TO BE PACKAGED IN TUBE  
 AS SHOWN.



SCALE: .75x

**PROPRIETARY NOTE**  
 THIS DOCUMENT CONTAINS INFORMATION  
 CONFIDENTIAL AND PROPRIETARY TO  
 SAMTEC INC. AND SHALL NOT BE  
 REPRODUCED OR TRANSFERRED TO  
 OTHER DOCUMENTS OR DISCLOSED TO  
 OTHERS OR USED FOR ANY PURPOSE  
 OTHER THAN THAT FOR WHICH IT WAS  
 OBTAINED WITHOUT THE EXPRESSED  
 WRITTEN CONSENT OF SAMTEC INC.

TABLE 1	
POSITION NUMBER	"A"
45, 46	.138 [3.51]
01, 23, 68, 90	.197 [5.00]
ALL OTHERS	.167 [4.24]

## NOTES:

1. TERMINALS TO BE SHEARED TO MEET DIMENSION SPECIFICATION.
2. MINIMUM PUSHOUT FORCE: .5 LB.
3. PARTS TO BE PACKAGED IN TUBE AS SHOWN.

**samtec**

810 PROGRESS BLVD. NEW ALBANY, INDIANA 47150  
 PHONE (812) 944-6733 P.O. BOX 1147  
 CODE 55322

MADE BY:

PURVIS 09-19-97

HPT-145-XX-XX-D-RA  
 SHEET 1 OF 1

EXISPROD\ASSEMBLY  
 050\HPT145ASM