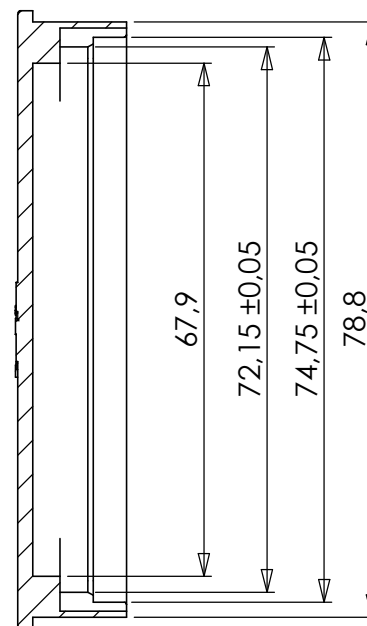
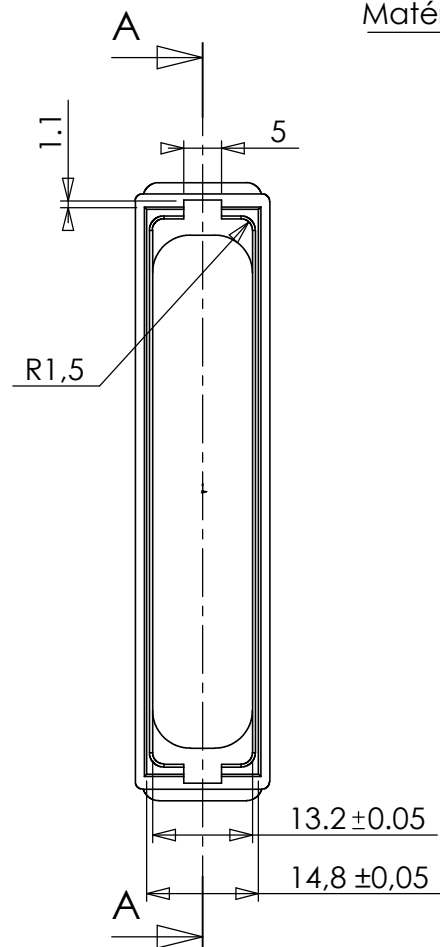


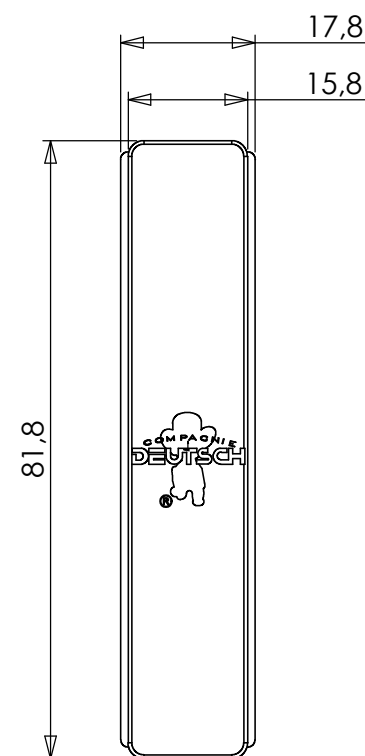
EX


Matériaux : Thermoplastique

Technical drawing of a rectangular thermoplastic component. The drawing includes a front view and a cross-section A-A. The front view shows a rectangular shape with a central cavity. Dimensions include a top width of 5, a top thickness of 1.1, a bottom width of 13.2 ± 0.05, a bottom thickness of 14.8 ± 0.05, and a corner radius of R1.5. Section A-A shows the internal structure with dimensions 67.9, 72.15 ± 0.05, 74.75 ± 0.05, and 78.8. A vertical dimension of 81.8 is also shown on the right side of the drawing.



A-A



c	16.10.2001	OE391001						
b	16.10.2000	Largeur 17.8 devient 15.8	SERIE	DMC-M (4 modules)	DATE	28.06.91	VISA Creation Created	VISA Approbation Approval
a	09.02.1998	Sup. rebord longueur						
Revision	Date	Observations	DESIGNATION			REF :		
ORIGINE : DE 34040			BOUCHON			P/N: 104-0078-00		
			Connecteurs Electriques Deutsch			FICHE TECHNIQUE		
17, rue LAVOISIER - BP 117 - 27091 EVREUX CEDEX 9 - FRANCE						TECHNICAL DATA SHEET		
						204-19-A/F00		