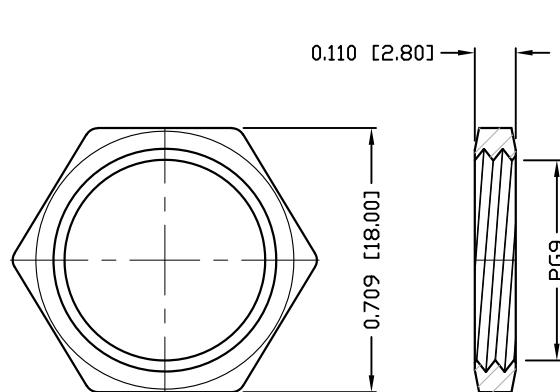
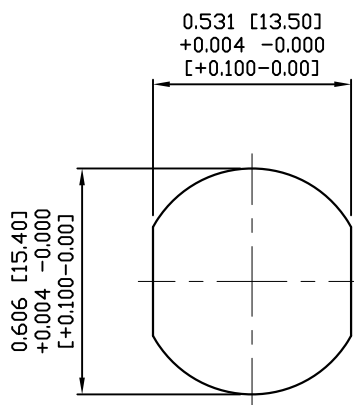


DESCRIPTION: M12 MALE - PANEL MOUNT (REAR) - 4 POS. - D-CODE



NUT



PANEL CUT-OUT

NOTE:

MATERIAL

HOUSING:

CONTACT:

NUT:

SHELL:

O-RING:

FINISH

CONTACT:

NUT:

SHELL:

ELECTRICAL

RATED CURRENT:

RATED VOLTAGE:

INSULATION RESISTANCE:

CONTACT RESISTANCE:

WATER PROOF:

ENVIRONMENT

OPERATION TEMPERATURE:

PBT UL94V-0, BLACK

BRASS

BRASS

BRASS

EPDM, BLACK

GOLD PLATED

OVER 50u" NICKEL

NICKEL PLATED

60u" TO 100u"

NICKEL PLATED

60u" TO 100u"

4A

250V

100 MOhms MIN.

10 mOhms MAX.

IP67

-40°C TO +85°C

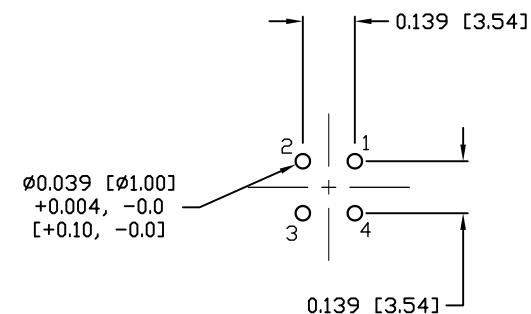
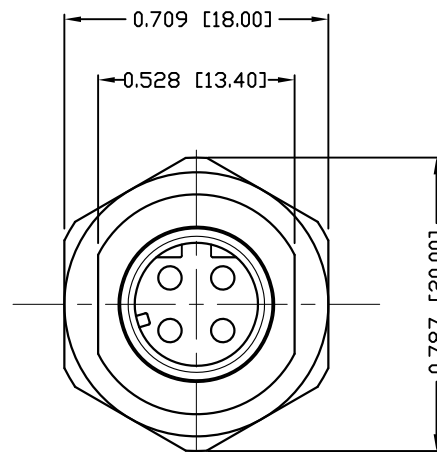
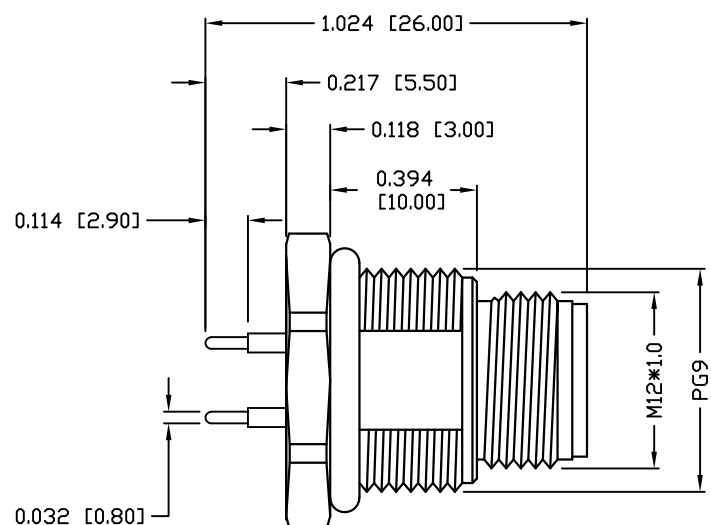
860RD04-113R00Y

3 = BRASS/NICKEL SHELL & NUT

S = STAINLESS STEEL SHELL & NUT

1 = GOLD FLASH

4 = 10u" GOLD



RECOMMEND P.C.B LAYOUT

RoHS COMPLIANT

UNITS = INCHES [MM]

DO NOT SCALE FROM DRAWING



THESE DRAWINGS AND SPECIFICATIONS ARE THE PROPERTY OF NorComp AND SHALL NOT BE REPRODUCED, COPIED OR USED AS THE BASIS FOR THE MANUFACTURE OR SALE OF APPARATUS WITHOUT WRITTEN PERMISSION.

DRAWN:

M. SIGMON

DATE:

07-26-16

NorComp

SCALE:

NTS

SHEET

1

OF

1

REV

2

DWG NO.

860RD04-113R00Y