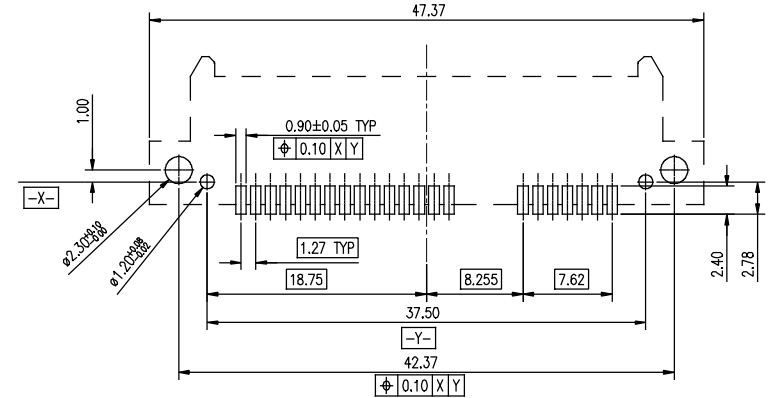
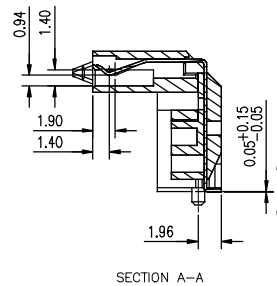
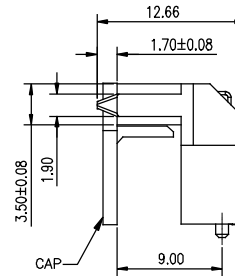
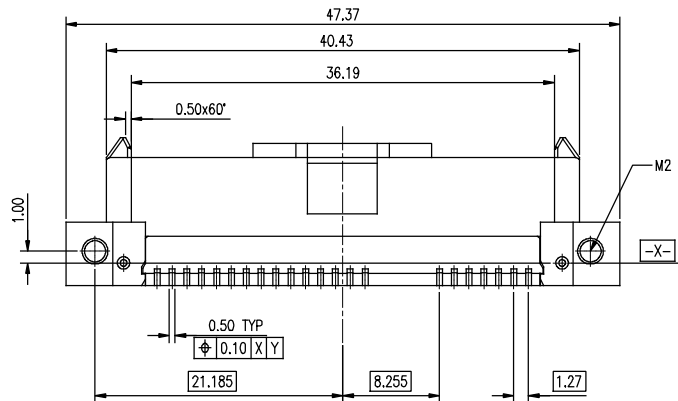
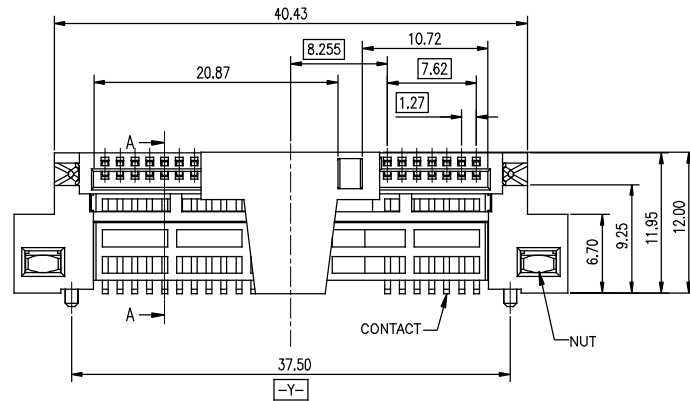
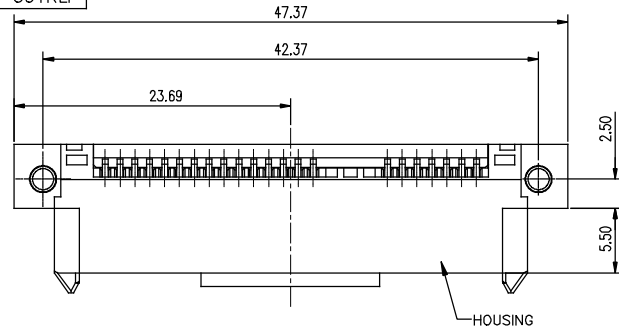
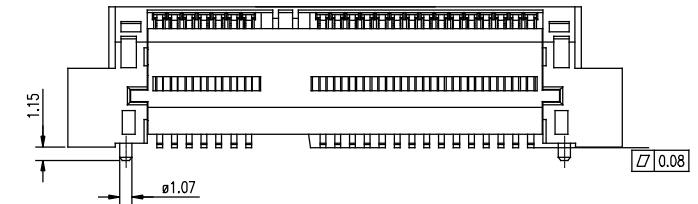




PRODUCT NO.
10122822-001RLF



RECOMMENDED PCB LAYOUT
THICKNESS=1.1mm (TOLERANCES ±0.05)



NOTES:

- MATERIAL:
 - HOUSING: HIGH THERMOPLASTIC RESIN, UL94V-0, COLOR: BLACK
 - CONTACT: COPPER ALLOY
 - CAP: HIGH THERMOPLASTIC RESIN, UL94V-0, COLOR: BLACK
 - NUT: COPPER ALLOY
- FINISH:
 - CONTACT: GOLD PLATING ON CONTACT AREA
TIN(MATTE) PLATING ON SOLDER TAIL AREA
NICKEL UNDER PLATED OVERALL
 - NUT: NICKEL UNDER PLATED OVERALL
- THIS PRODUCT MEETS EUROPEAN UNION DIRECTIVES AND OTHER COUNTRY REGULATIONS DESCRIBED IN GS-47-0004.
- RECOMMENDED SCREW TORQUE IS 1.5KGF-CM.

4. PART NUMBER DESCRIPTION:
10122822- 0 0 X X LF

CONTACT PLATING
1: Au 15u"
ROHS COMPLIANT
PACKING
R: TAPE AND REEL

5. APPLICABLE PRODUCT SPEC.: GS-12-1137
APPLICABLE PACKAGE SPEC.: GS-14-2309

| mat'l. code | | | | surface ASME Y14.5 | tolerance ASME Y14.5 | projection | product family | | |
|--------------------|----------|---|---|---------------------------------------|-------------------------|------------|-------------------|--|-------------------|
| ltr ecn no dr date | | | | tolerances unless otherwise specified | | MM | Series ATA | | |
| A | | | | angles | .X±0.35 | | title | | |
| B | | | | EN | .XX±0.25 | scale | SATA Receptacle | | |
| C | | | | X'±3' | .XXX±0.15 | | High Rise R/A SMT | | |
| | | | | dr | LEIF SHEN 2013-04-22 | FCI | dwg no | | sheet 1 of 1 size |
| | | | | enr | LEIF SHEN 2013-04-22 | | 10122822 | | A4 |
| | | | | chr | LEIF SHEN 2013-04-22 | | | | |
| | | | | appd | PM ZHENG 2013-05-06 | | type | | CUSTOMER Drawing |
| sheet index | revision | C | 1 | | | | | | |