

LOC		DIST		REVISIONS			
P	LYR	DESCRIPTION		DATE	DWN	APVD	
	1	initial release		21MAY2014	RG	MC	

NOTES

- 1

SURFACE TRACES PERMITTED WITHIN THIS AREA EXCEPT WHERE CAGE STANDOFFS, SHOWN IN DETAIL S, CONTACT PC BOARD.
- 2

PITCH BETWEEN PORTS OF ONE 1X3 CAGE.
- 3

SPACING BETWEEN CAGES ON THE SAME PC BOARD. TO BE SPECIFIED BY CUSTOMER, MUST COMPLY WITH MINIMUM DIMENSIONS SHOWN.
- 4

REFERENCE APPLICATION SPEC 114-13218 FOR RECOMMENDED DRILL HOLE DIAMETER AND PLATING THICKNESS.
- 5

UNPLATED THRU HOLE.
- 6

DATUM AND BASIC DIMENSION ESTABLISHED BY CUSTOMER.
- 7

DATUM 

-A-

 IS TOP SURFACE OF THE HOST BOARD.
- 8

DIMENSION C IS THE NOMINAL THICKNESS OF CUSTOMER SUPPLIED PC BOARD. MINIMUM PC BOARD THICKNESS:  
SINGLE SIDED: 1.45mm  
DOUBLE SIDED: 3mm PER QSFP
- 9

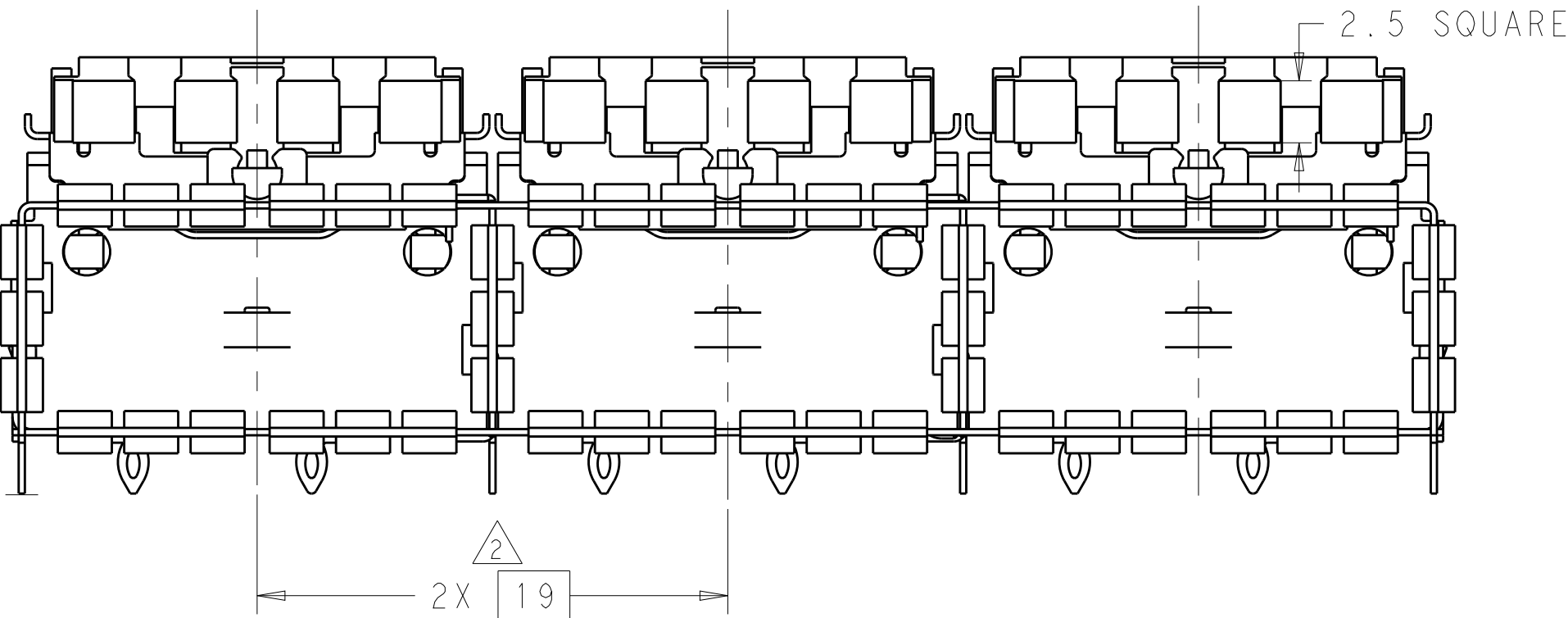
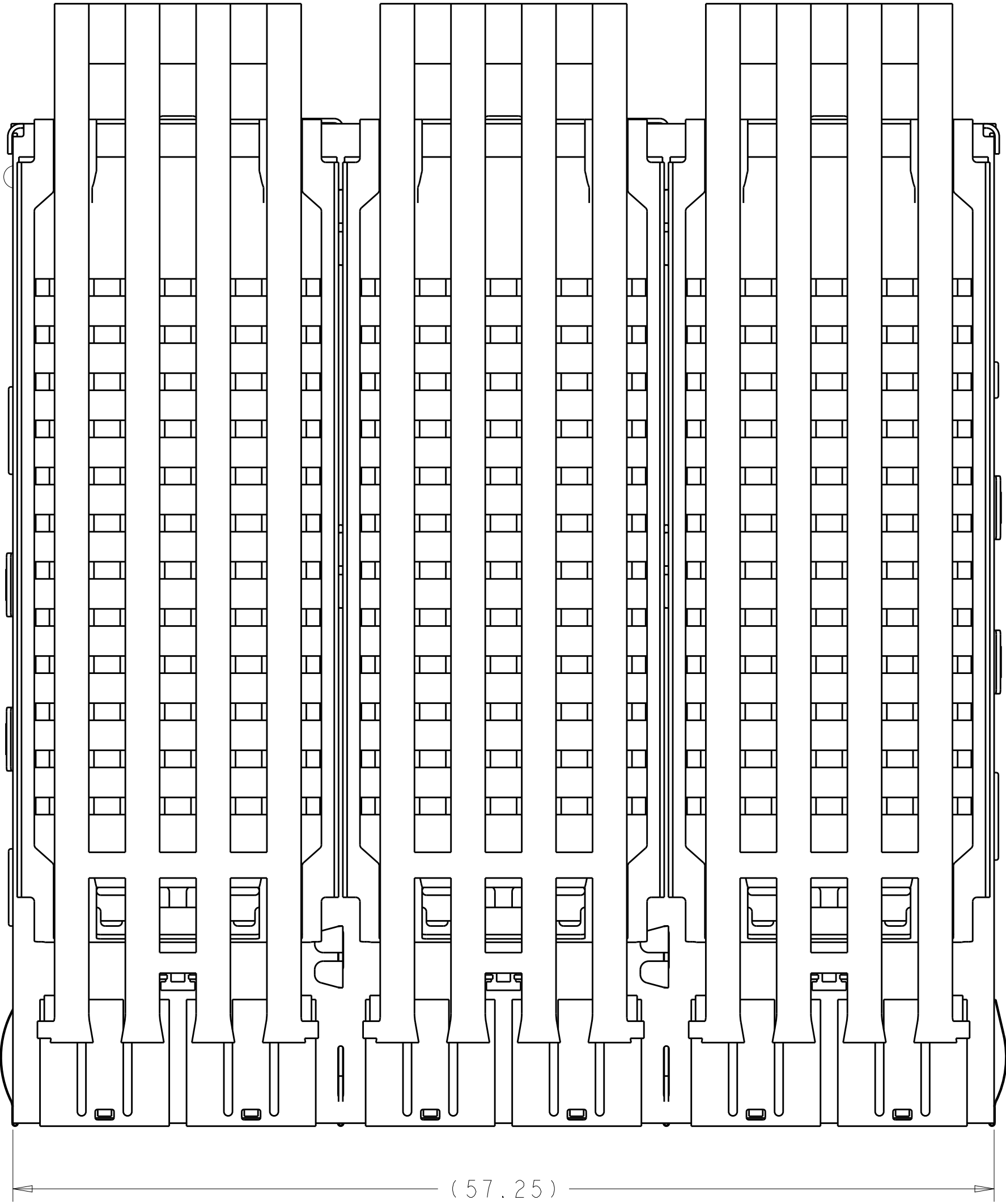
MATES WITH QSFP MSA COMPATIBLE TRANSCEIVER.
- 10

BASELINE FOR THE DIMENSION IS CENTER OF COMPLIANT PIN HOLE.
- 11

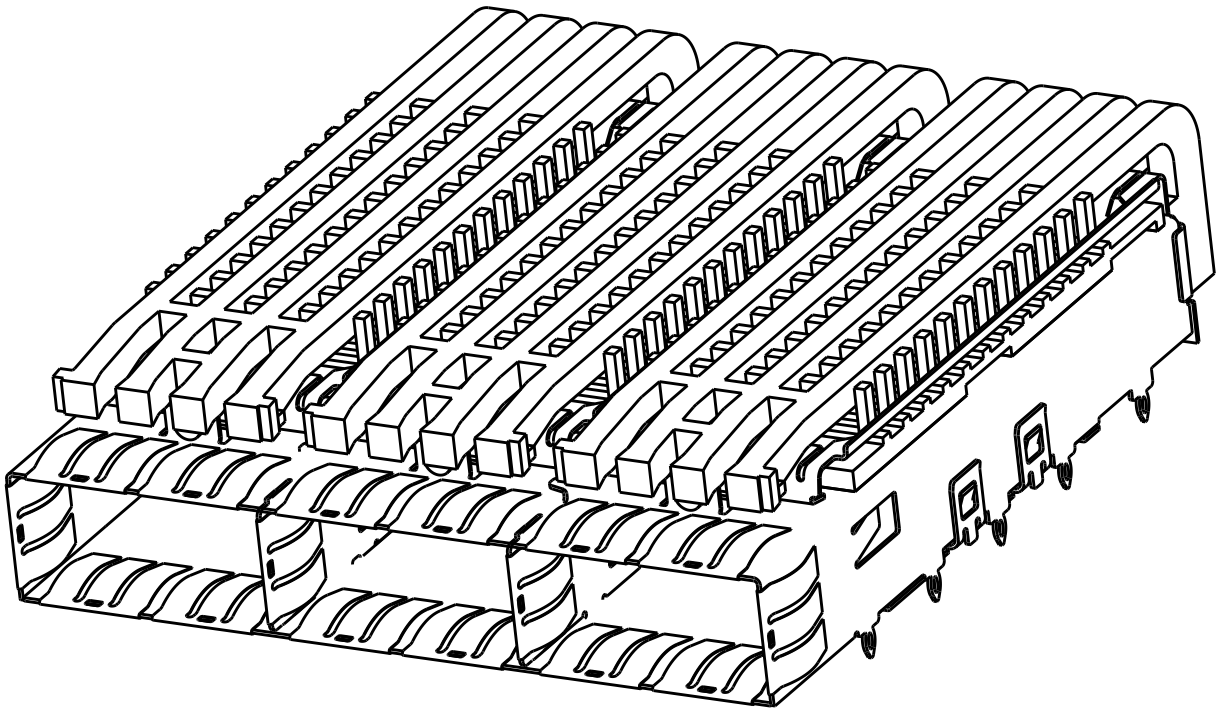
DIMENSION APPLIES WITH MODULE INSERTED IN CAGE.
- 12

MATERIAL:  
CAGE ASSEMBLY: NICKEL SILVER, 0.25 THICK  
EMI SPRINGS: COPPER ALLOY  
HEAT SINK: ALUMINUM  
HEAT SINK CLIP: STAINLESS STEEL  
LIGHT PIPE: CLEAR POLYCARBONATE
- 13

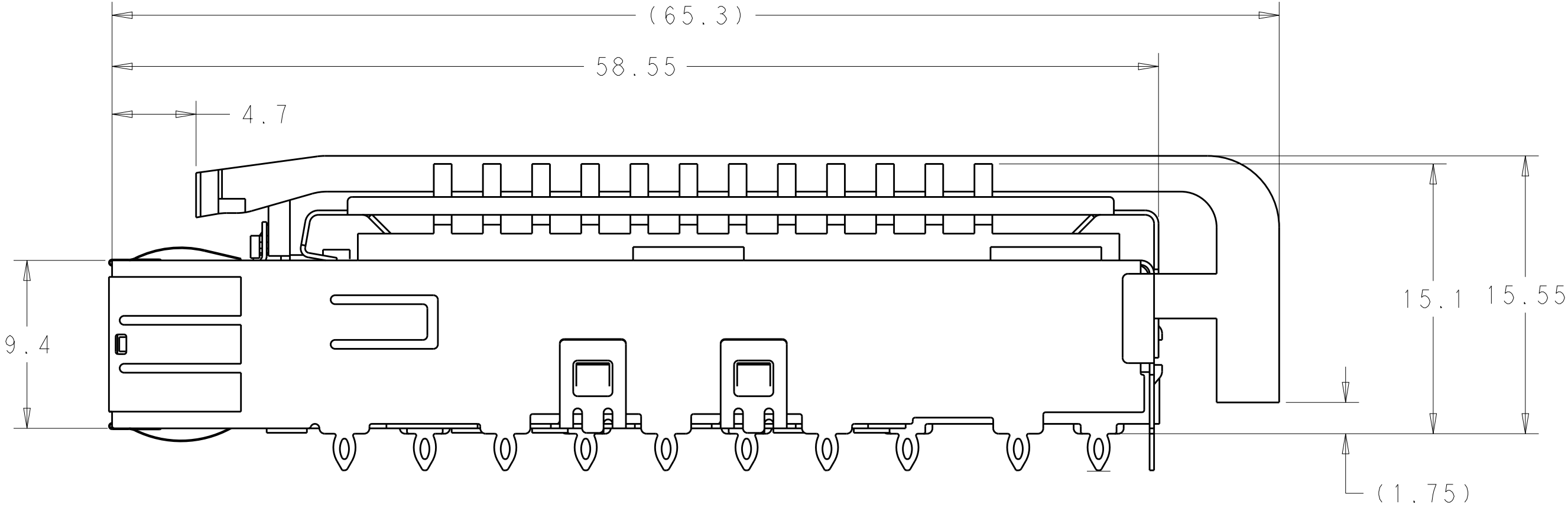
FINISH:  
EMI SPRINGS: 2um MINIMUM TIN  
HEAT SINK: BLACK ANODIZED



SCALE 4:1



SCALE 2:1

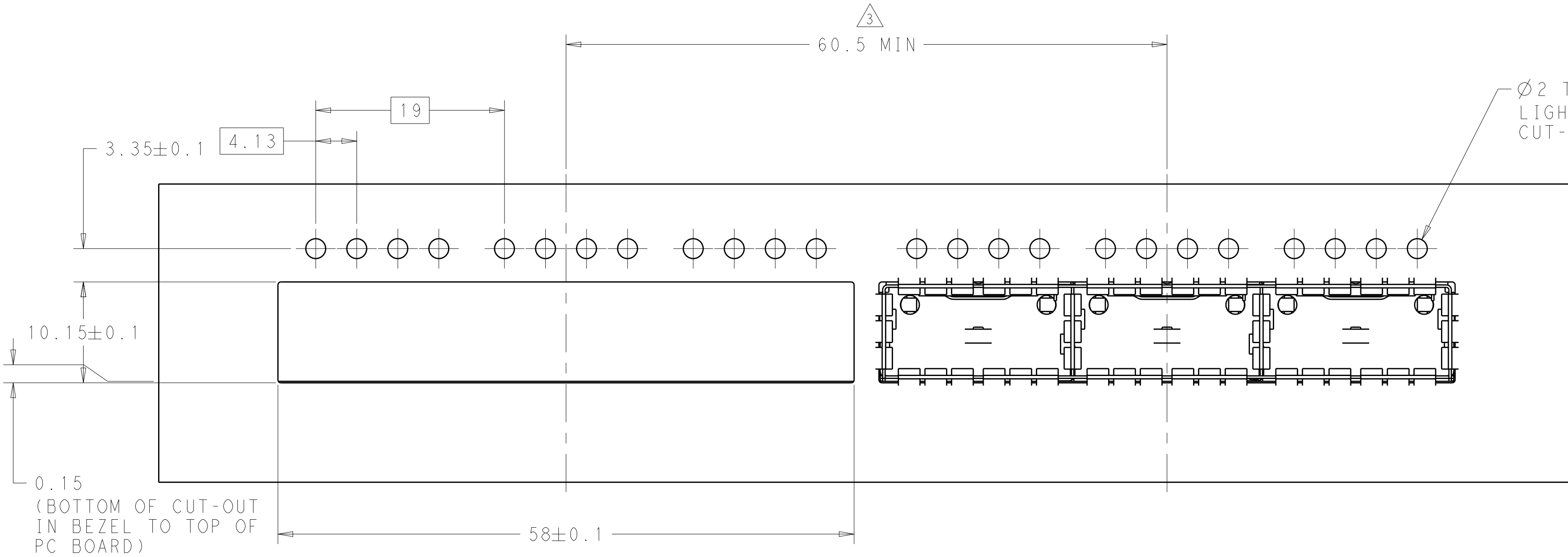


DESIGN APPROVED THIS PRINT IS  
**PRELIMINARY**  
TO FIRST PIECE APPROVAL  
CONTACT PRODUCT ENGINEERING  
BEFORE USING THIS PRINT

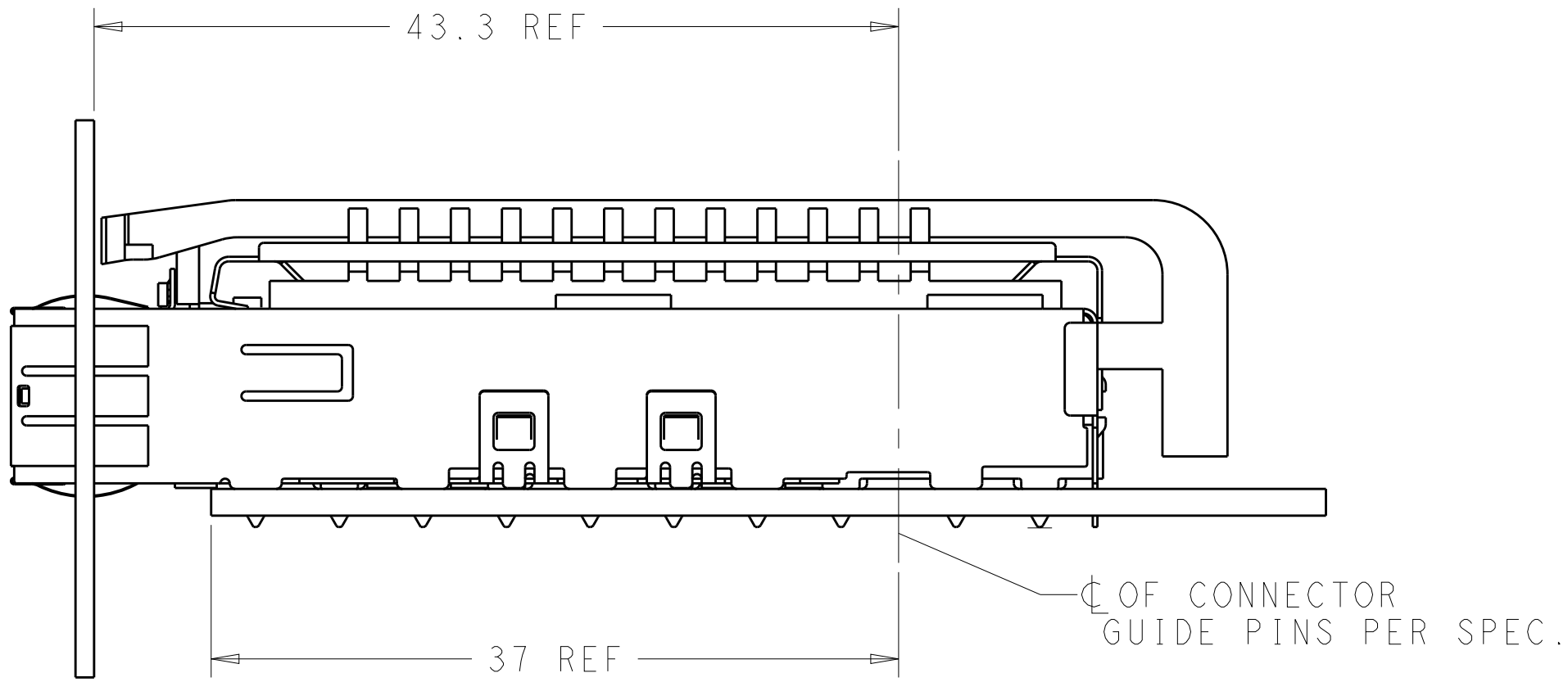
2057001-1  
PART NUMBER

THIS DRAWING IS A CONTROLLED DOCUMENT.		DWN Robert Gan 21MAY2014	TE Connectivity	
		CHK Marshall Chan		
DIMENSIONS: mm		TOLERANCES UNLESS OTHERWISE SPECIFIED:	APVD Marshall Chan 21MAY2014	NAME
		0 PLC ±.25 1 PLC ±0.25 2 PLC ±0.20 3 PLC ±. 4 PLC ±. ANGLES ±. FINISH	PRODUCT SPEC 108-2286 APPLICATION SPEC 114-13217	1X3 CAGE ASSEMBLY, THRU BEZEL SPRING FINGER, HEAT SINK, QSFP
MATERIAL		Customer Drawing	SIZE A1	RESTRICTED TO
		Customer Drawing	CAGE CODE 00779	
		DRAWING NO. C=2057001	REV 1	
		SCALE 4:1	SHEET 1 OF 4	

LOC		DIST		REVISONS			
P	LTR	DESCRIPTION		DATE	DWN	APVD	
-	-	SEE SHEET 1		-	-	-	

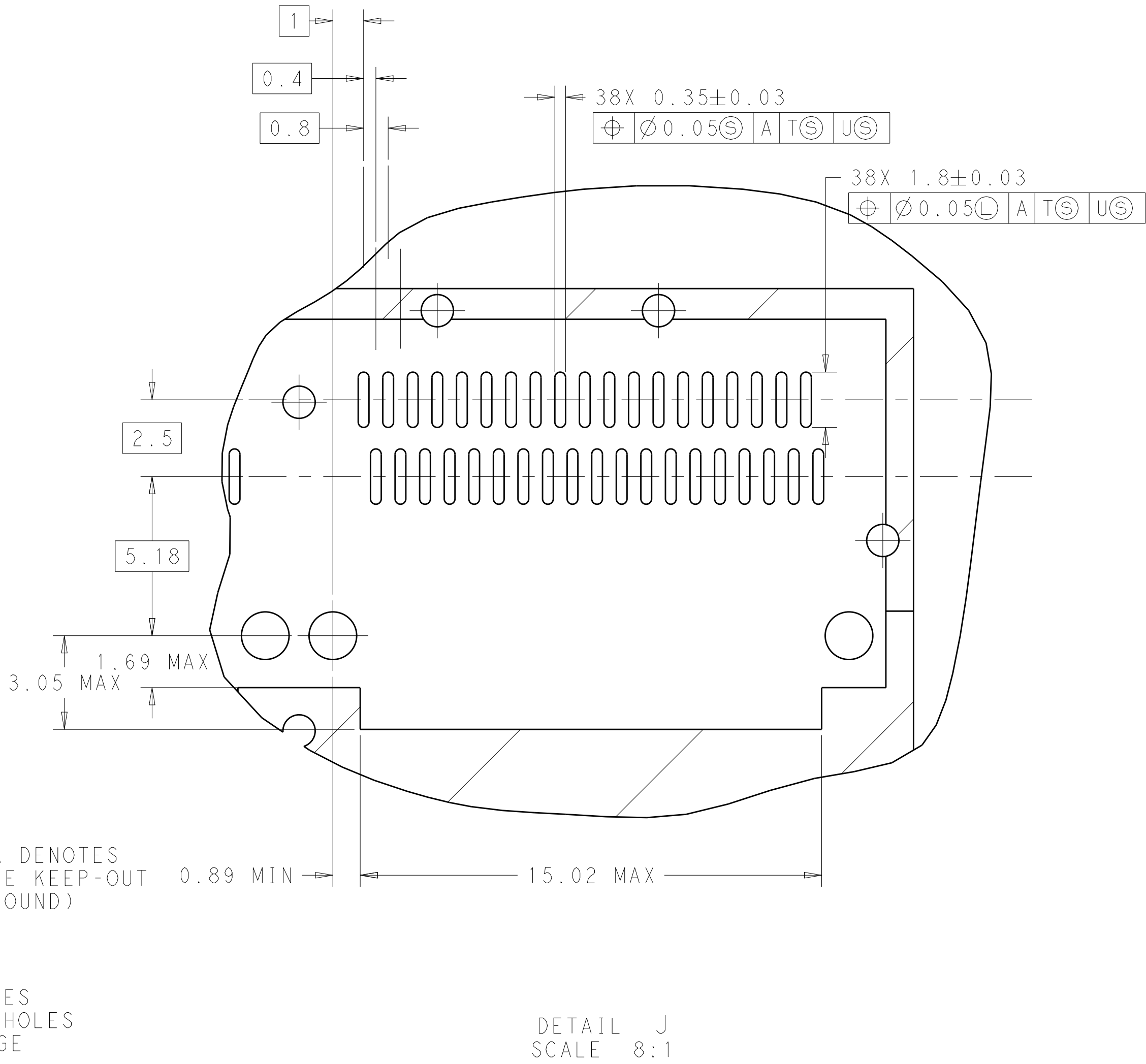
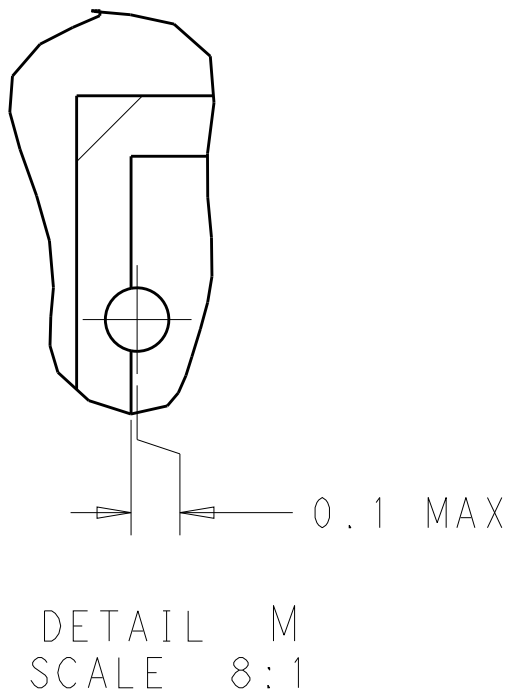
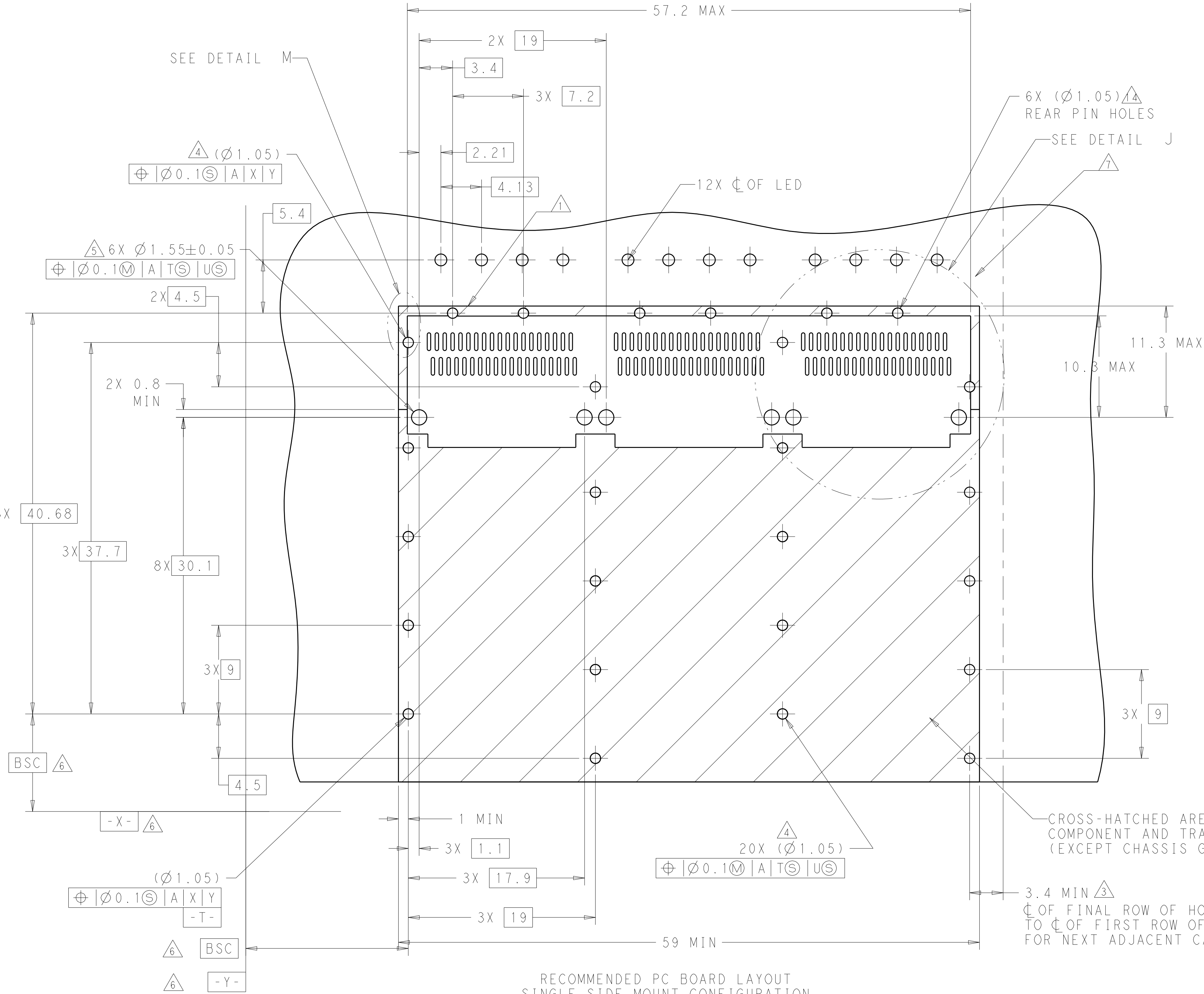




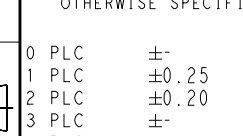
SCALE 3:1



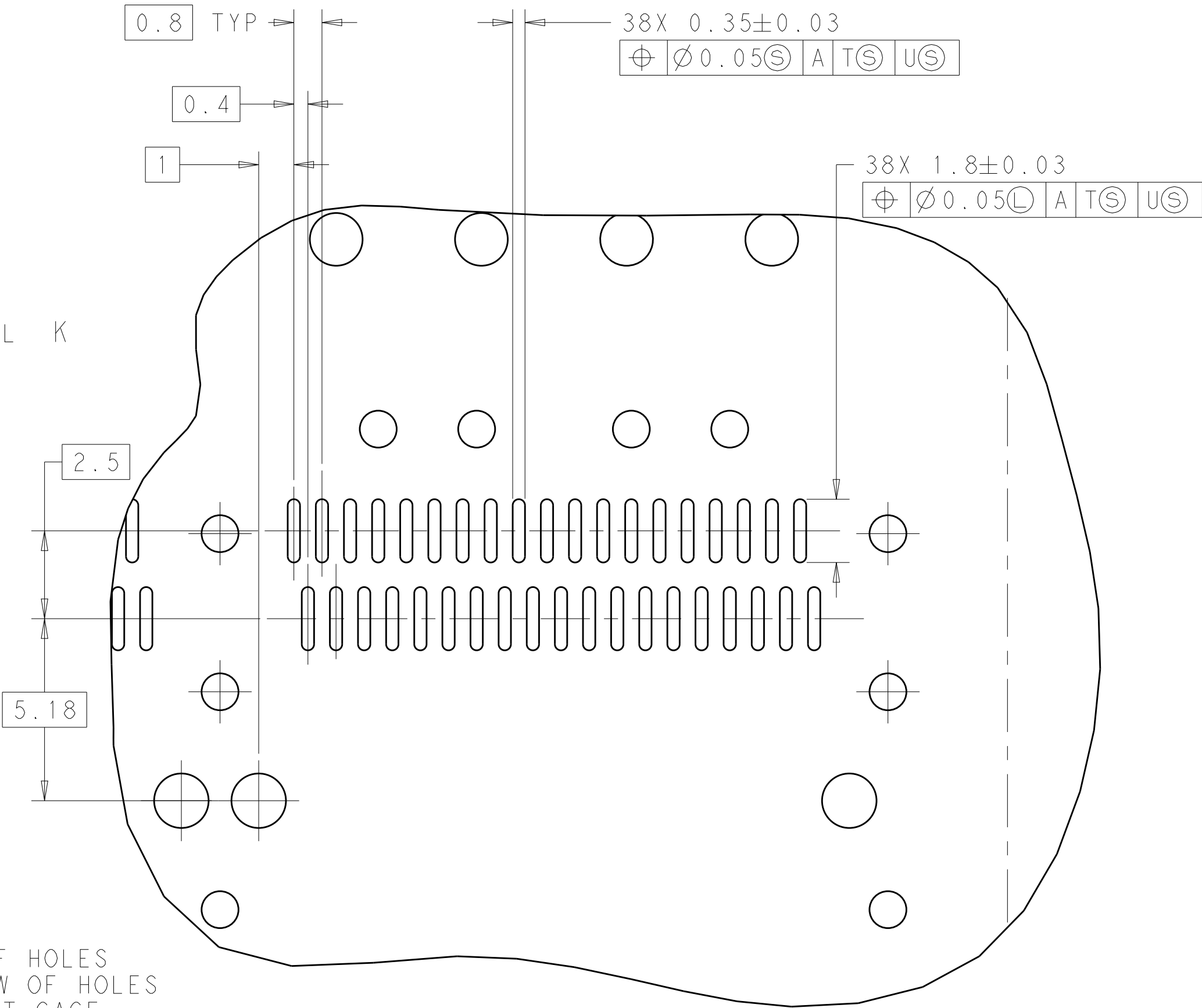
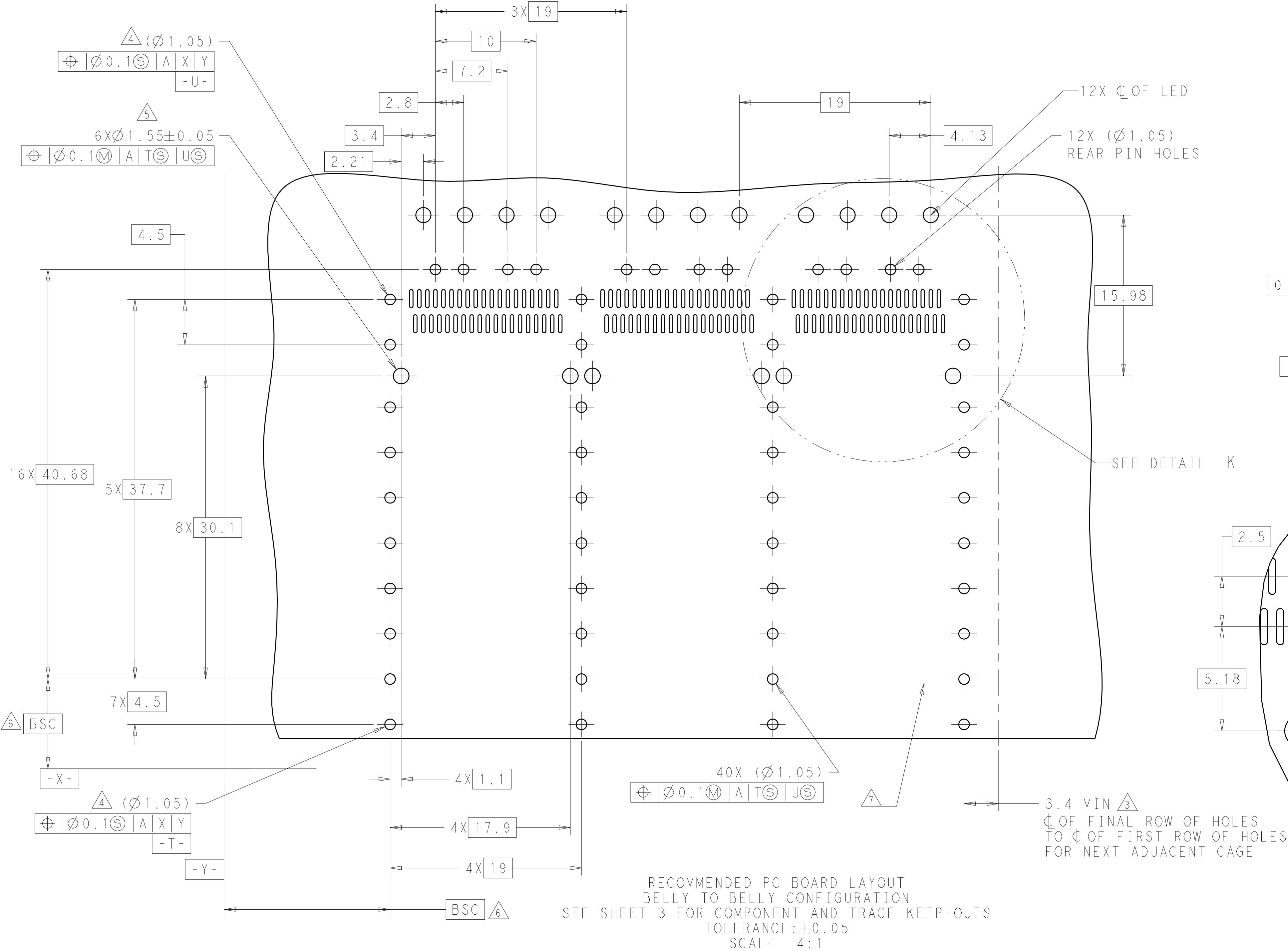
THIS DRAWING IS A CONTROLLED DOCUMENT.		DWN Robert Gan	21MAY2014	TE Connectivity	
		CHK			
DIMENSIONS:		TOLERANCES UNLESS OTHERWISE SPECIFIED:		NAME	
mm		0 PLC ±0.25		1X3 CAGE ASSEMBLY, THRU BEZEL	
		1 PLC ±0.20		SPRING FINGER, HEAT SINK, QSFP	
		2 PLC ±0.20		-	
		3 PLC ±		SIZE	
		4 PLC ±		CAGE CODE	
		ANGLES ±		DRAWING NO	
		FINISH		RESTRICTED TO	
MATERIAL		WEIGHT		A100779C=2057001	
-		-		-	
		Customer Drawing		SCALE 4:1 SHEET 2 OF 4 REV 1	

LOC		DIST		REVISIONS					
-		-		DESCRIPTION			DATE	DWN	APVD
		P	LTR						
			-	SEE SHEET 1			-	-	-




THIS DRAWING IS A CONTROLLED DOCUMENT.		DWN Robert Gan	21MAY2014	 TE Connectivity	
		CHK			
DIMENSIONS:	mm	TOLERANCES UNLESS OTHERWISE SPECIFIED:		NAME	1X3 CAGE ASSEMBLY, THRU BEZEL SPRING FINGER, HEAT SINK, QSFP
		0 PLC ±0.25			
		1 PLC ±0.20		PRODUCT SPEC	108-2286
		2 PLC ±0.20			
MATERIAL		3 PLC ±0.20		APPLICATION SPEC	114-13217
		4 PLC ±0.20			
ANGLES FINISH		RESTRICTED TO			
		A100779C=2057001			
		Customer Drawing		SCALE 4:1 SHEET 3 OF 4 REV 1	

LOC	DIST	REVISIONS					
		P	LTR	DESCRIPTION	DATE	DWN	APVD
-	-	-	-	SEE SHEET 1	-	-	-



RECOMMENDED PC BOARD LAYOUT  
BELLY TO BELLY CONFIGURATION  
SEE SHEET 3 FOR COMPONENT AND TRACE KEEP-OUTS  
TOLERANCE: ±0.05  
SCALE 4:1

DETAIL K  
SCALE 8:1

THIS DRAWING IS A CONTROLLED DOCUMENT.		DWN Robert Gan 21MAY2014	 TE Connectivity	
		CHK Marshall Chan		
DIMENSIONS: mm	TOLERANCES UNLESS OTHERWISE SPECIFIED:	APVD Marshall Chan 21MAY2014	NAME 1X3 CAGE ASSEMBLY, THRU BEZEL SPRING FINGER, HEAT SINK, OSFP	
		PRODUCT SPEC 108-2286		