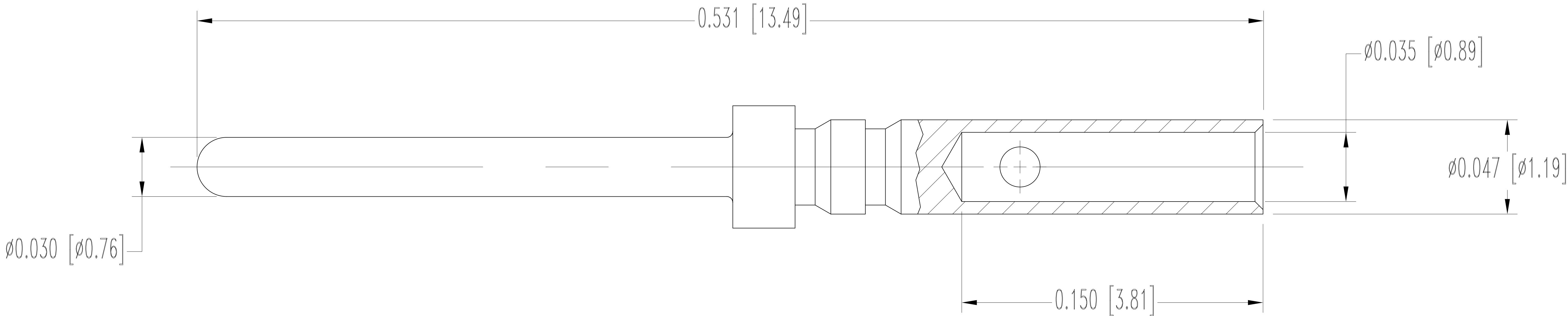


THIS DRAWING CONTAINS INFORMATION PROPRIETARY TO POSITRONIC AND IT'S SUBSIDIARIES. POSITRONIC BELIEVES THE DATA ON THIS DRAWING TO BE RELIABLE, SINCE THE TECHNICAL INFORMATION IS GIVEN FREE OF CHARGE, THE USER EMPLOYS SUCH INFORMATION AT HIS OWN DISCRETION AND RISK. POSITRONIC ASSUMES NO RESPONSIBILITY FOR RESULTS OBTAINED OR DAMAGES INCURRED FROM USE OF SUCH INFORMATION IN WHOLE OR IN PART.

SK7268

| DATE | REV | REVISION RECORD | APP | DR | CK |
|-------------|-----|-----------------|-----|----|----|
| 09-06 19 | B | ECO 69334 | RK | PY | ND |



NOTES:

1. MATERIALS AND FINISHES: PRECISION MACHINED COPPER ALLOY, GOLD FLASH OVER NICKEL PLATE.
2. DETAILED PRODUCT, MECHANICAL AND ELECTRICAL INFORMATION IS AVAILABLE IN THE LATEST STANDARD DENSITY D-SUB PRODUCT PUBLICATION AT CONNECTPOSITRONIC.COM.
3. CONTACTS ARE COMPLIANT TO THE CURRENT RoHS DIRECTIVE.
4. DIMENSIONS ARE IN INCHES [MILLIMETERS].

| | | | |
|---|-------|---|---------------------------------|
|  | | POSITRONIC INDUSTRIES INC. SPRINGFIELD, MISSOURI 65801 | |
|  DECIMAL TOL. ± 0.015 [0.38] | TITLE | ODD SERIES | SCALE N.T.S. |
| | | DRAWN BY YK APPROVED BY R. WILLIAMS | |
|  ANGULAR TOL. ± 5° | DATE | MC8122D/AA | |
| | | 4-13-06 | DRAWING NUMBER SK7268 REV. B |