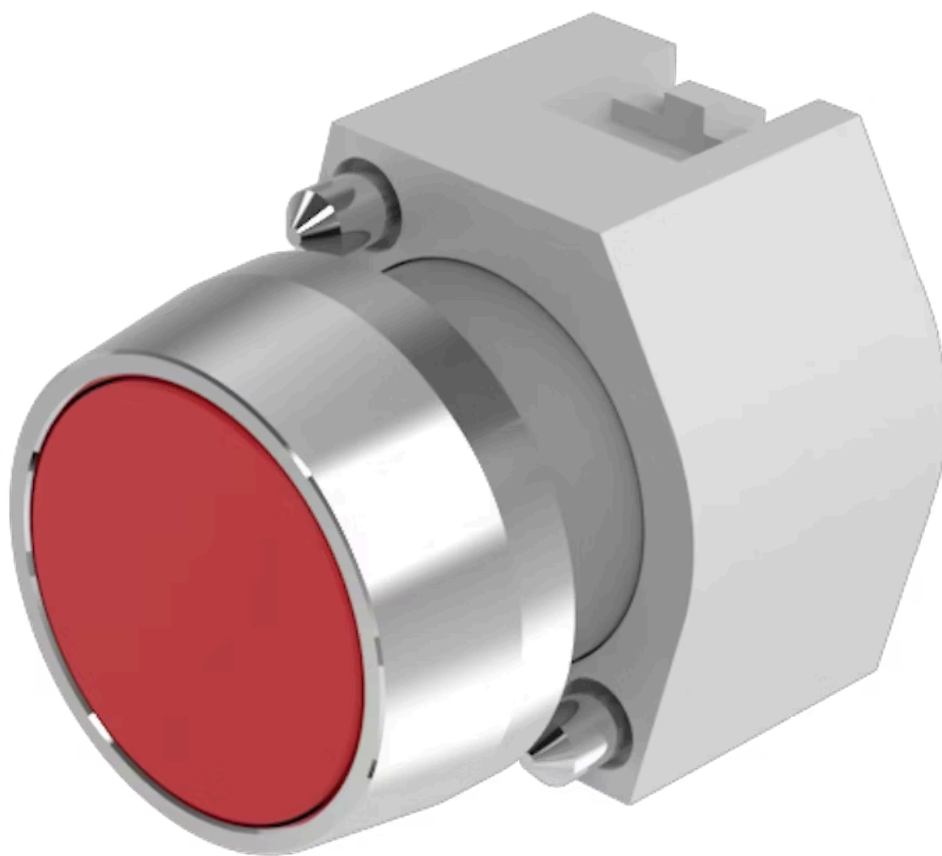


Actuator

704.042.2



<https://eao.com/p/704.042.2>

Your product:



704.042.2 Actuator

FRONT

Front form:	round
Front dimension:	Ø 29 mm
Front bezel material:	Aluminium
Front bezel colour:	Nature

MOUNTING

Design:	raised
---------	--------

OPERATING-/INDICATION PART

Lens shape:	flush
Lens illumination:	non illuminative
Lens colour:	Red
Lens optics:	transparent
Lens material:	Plastic

ELECTRICAL CHARACTERISTICS

Standards:	The switches comply with the "Standards for low-voltage switching devices" DIN EN 60947-1
------------	---

MECHANICAL CHARACTERISTIC

Weight:	0.04 kg
Mechanical lifetime:	≤3 Mio. cycles of operation
Switching action:	Maintained

Operating Travel: ca. 5.8 mm \pm 0.2 mm

Operating force: 8 N

AMBIENT CONDITION

IP Protection: IP65 front side

Operating temperature: - 40 °C ... + 55 °C

Storage temperature: - 40 °C ... + 85 °C

OTHER

Housing material: Plastic

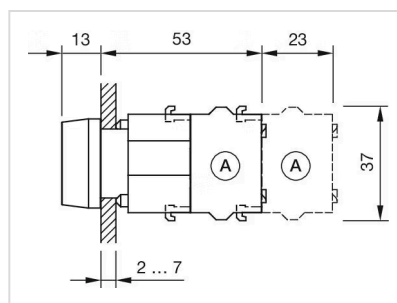
Housing colour: Grey

Hints: Frontring with protective cover to be mounted with a torque of 0.4 Nm onto actuator, Max. 3 switching elements can be clipped on

max. number of switching elements: 3

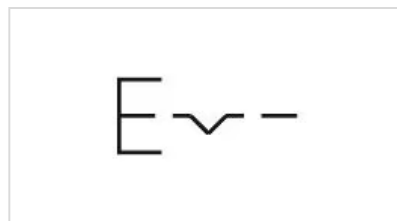
Short Description: Actuator, Ø 29 mm, flush, non illuminative, Red, Plastic, transparent, round, Nature, Aluminium, anodised, Maintained

Dimension drawings:

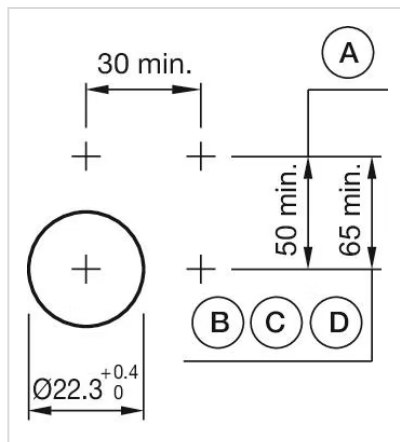


A = Screw terminal

Wiring diagrams:



Mounting cut-outs:



- A = Screw terminal
- B = Push-in terminal (PIT)
- C = Plug-in terminal 6.3 mm x 0.8 mm
- D = Double plug-in terminal 6.3 mm x 0.8 mm