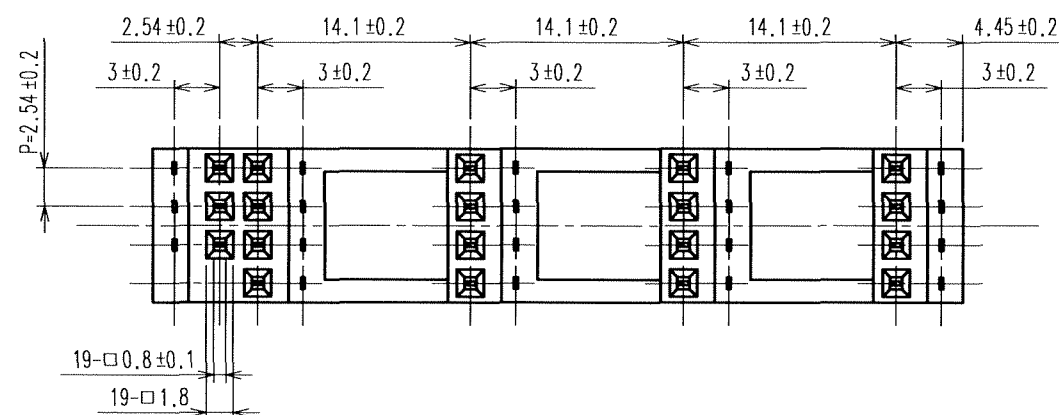
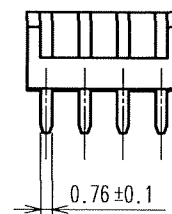
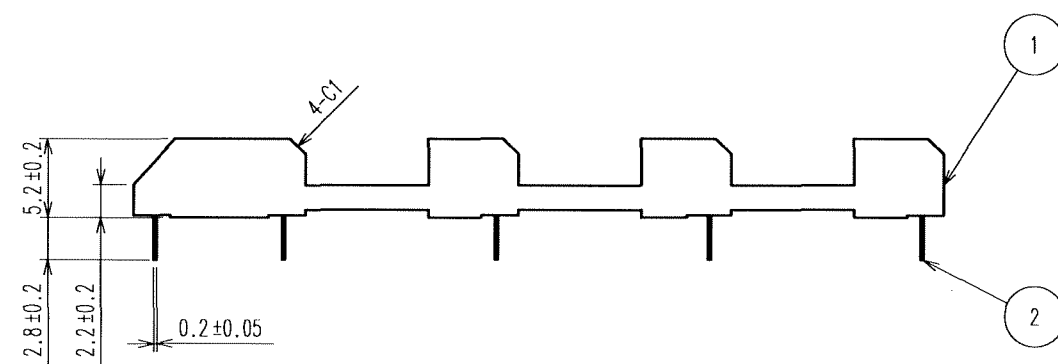
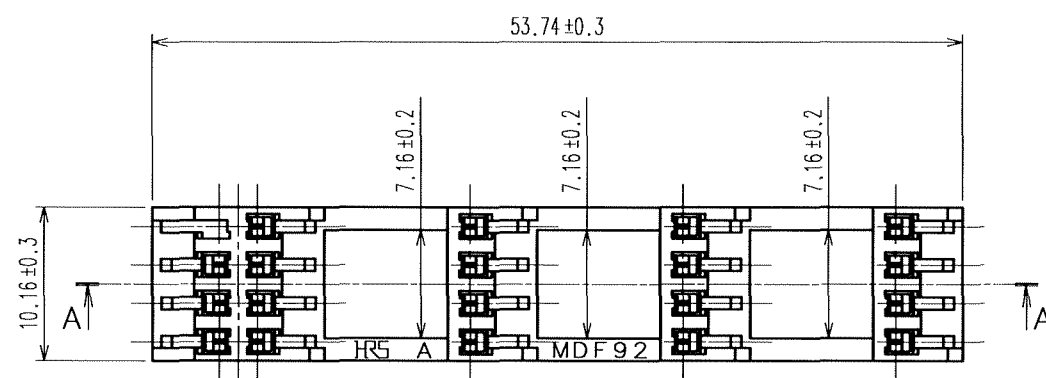
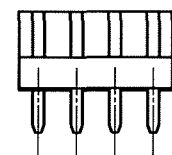
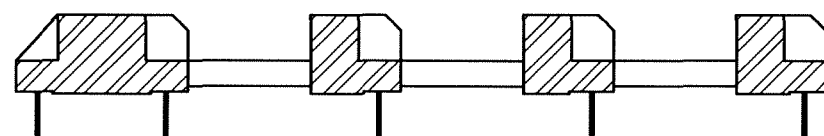


APPLICABLE STANDARD					
RATING	OPERATING TEMPERATURE RANGE	-35°C TO +85°C (NOTES 1)	STORAGE TEMPERATURE RANGE	-10°C TO + 60°C	
	VOLTAGE	250V AC	APPLICABLE CONNECTOR	MDF92-19P-2. 54DSA	
	CURRENT	3A			
SPECIFICATIONS					
ITEM		TEST METHOD	REQUIREMENTS	QT	AT
CONSTRUCTION					
GENERAL EXAMINATION		VISUALLY AND BY MEASURING INSTRUMENT.	ACCORDING TO DRAWING.	X	X
MARKING		CONFIRMED VISUALLY.		X	X
ELECTRIC CHARACTERISTICS					
CONTACT RESISTANCE		100m A (DC OR 1000 Hz).	30mΩ MAX.	X	—
INSULATION RESISTANCE		500V DC.	1000MΩ MIN.	X	—
VOLTAGE PROOF		650V AC FOR 1 min.	NO FLASHOVER OR BREAKDOWN.	X	—
MECHANICAL CHARACTERISTICS					
CONTACT INSERTION AND EXTRACTION FORCES		□0.635±0.002mm BY STEEL GAUGE	INSERTION FORCE : 4.4 N MAX. EXTRACTION FORCE : 0.2 N MIN	X	—
INSERTION AND WITHDRAWAL FORCES		MEASURED BY APPLICABLE CONNECTOR	INSERTION FORCE : 30N MAX. WITHDRAWAL FORCE : 8 N MIN	X	—
MECHANICAL OPERATION		50TIMES INSERTIONS AND EXTRACTIONS.	① CONTACT RESISTANCE: 30mΩ MAX. ② NO DAMAGE, CRACK OR LOOSENESS OF PARTS.	X	—
VIBRATION		FREQUENCY 10 TO 55 Hz, SINGLE AMPLITUDE 0.75 mm, AT 2 h, FOR 3 DIRECTIONS.	① NO ELECTRICAL DISCONTINUITY OF 10μs. ② CONTACT RESISTANCE: —mΩ MAX ③ NO DAMAGE, CRACK AND LOOSENESS OF PARTS.	X	—
SHOCK		490 m/s ² DURATION OF PULSE 11 ms AT 3 TIMES FOR 3 DIRECTIONS.	① NO ELECTRICAL DISCONTINUITY OF 10μs. ② CONTACT RESISTANCE: —mΩ MAX ③ NO DAMAGE, CRACK AND LOOSENESS OF PARTS.	X	—
ENVIRONMENTAL CHARACTERISTICS					
RAPID CHANGE OF TEMPERATURE		TEMPERATURE -55→ 5 TO 35→ 85→ 5 TO 35°C TIME 30→10 TO 15→ 30→10 TO 15min UNDER 5 CYCLES.	① CONTACT RESISTANCE: 30mΩ MAX. ② INSULATION RESISTANCE: 1000 MΩ MIN. ③ NO DAMAGE, CRACK AND LOOSENESS OF PARTS.	X	—
DAMP HEAT (STEADY STATE)		EXPOSED AT 40 ± 2 °C, 90 TO 95 %, 96 h.	① CONTACT RESISTANCE: 30mΩ MAX. ② INSULATION RESISTANCE: 500 MΩ MIN. ③ NO DAMAGE, CRACK AND LOOSENESS OF PARTS.	X	—
CORROSION SALT MIST		EXPOSED IN 5% SALT WATER SPRAY FOR 48 h.	① CONTACT RESISTANCE: 60 mΩ MAX. ② NO HEAVY CORROSION.	X	—
SULPHUR DIOXIDE		EXPOSED IN 10 PPM FOR 96 h. (TEST STANDARD: JEIDA-39)	① CONTACT RESISTANCE: 60 mΩ MAX. ② NO HEAVY CORROSION.	X	—
RESISTANCE TO SOLDERING HEAT		SOLDER TEMPERATURE 260±5°C, FOR IMMERSION DURATION 10S	NO DEFORMATION OF CASE OF EXCESSIVE LOOSENESS OF THE TERMINALS.	X	—
SOLDERABILITY		SOLDERED AT SOLDER TEMPERATURE 245±5°C FOR IMMERSION DURATION 5S.	SOLDER SHALL COVER A MINIMUM OF 95% OF THE SURFACE BEING IMMersed	X	—
COUNT	DESCRIPTION OF REVISIONS		DESIGNED	CHECKED	DATE
1					
REMARKS			APPROVED	MO. NAKAMURA	05.08.10
NOTE1: INCLUDING THE TEMPERATURE RISE BY CURRENT.			CHECKED	TS. MIYAZAKI	05.08.10
UNLESS OTHERWISE SPECIFIED, REFER TO JIS C 5402.			DESIGNED	YH. MICHIDA	05.08.09
			DRAWN	YH. MICHIDA	05.08.09
Note QT: Qualification Test AT: Assurance Test X: Applicable Test			DRAWING NO.		ELC4-160702-05
SPECIFICATION SHEET			PART NO.	MDF92-19S-2. 54DSA (05)	
HIROSE ELECTRIC CO., LTD.			CODE NO.	CL547-0443-6-05	1/1

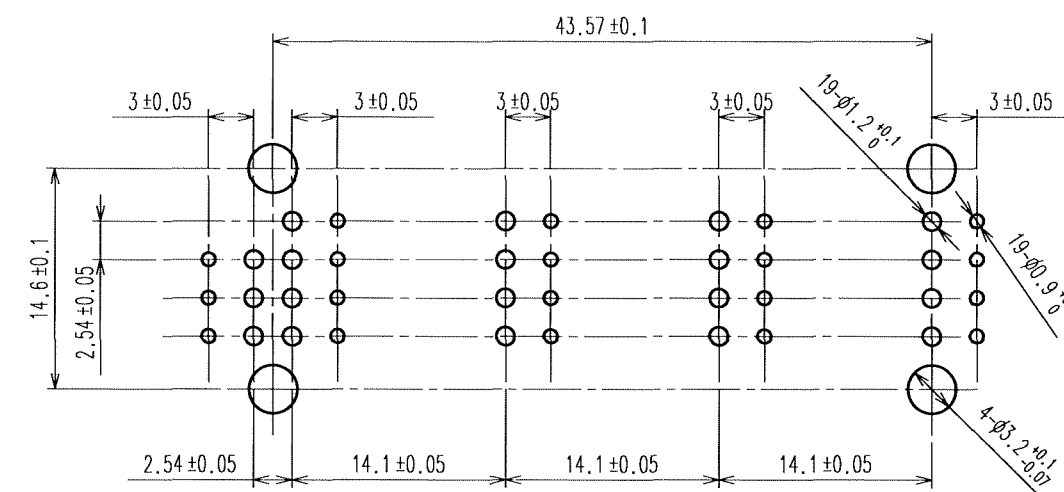


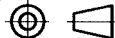
A - A



	COUNT	DESCRIPTION OF REVISIONS	BY	CHKD	DATE		COUNT	DESCRIPTION OF REVISIONS	BY	CHKD	DATE
△					. .	△					. .
△					. .	△					. .
△					. .	△					. .

BACKBOARD LAYOUT PATTERN



			2		PHOSPHOR BRONZE		CONTACT AREA:GOLD PLATED:0.2μ m min LEAD AREA:TIN PLATED 1μ m min UNDER PLATED:NICKEL 1μ m min							
1	PBT	UL94V-0(BLACK)												
NO.		MATERIAL		FINISH, REMARKS		NO.		MATERIAL		FINISH, REMARKS				
CODE NO. (OLD)					DRAWN		DESIGNED		CHECKED		APPROVED		RELEASED	
					<i>G. Michida</i> 05-8-10		<i>G. Michida</i> 05-8-10		<i>T. Higazaki</i> 05-08-10		<i>M. Nakamura</i> 05-08-10		. .	
		DRAWING NO.					PART NO.							
SCALE		EDC3-160702-05					MDF92-19S-2.54DSA(05)							
2 : 1														
UNITS		HRS					CODE NO.							1/
mm		HIROSE ELECTRIC CO., LTD					CL547-0443-6-05							