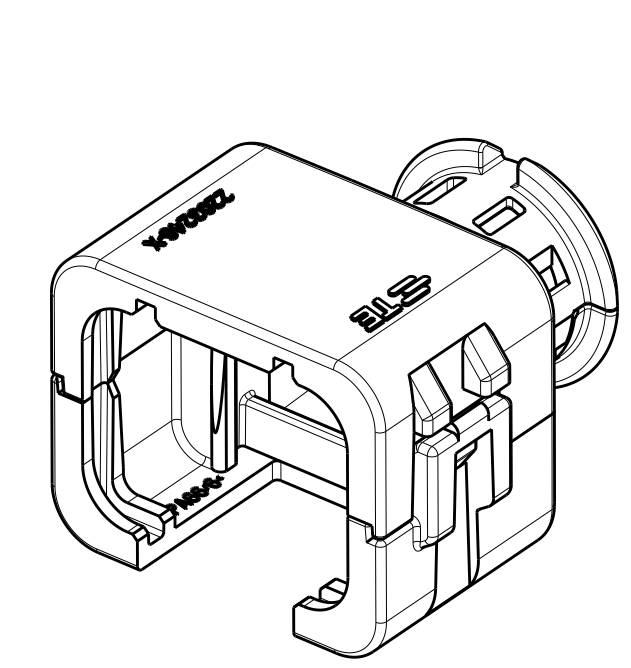
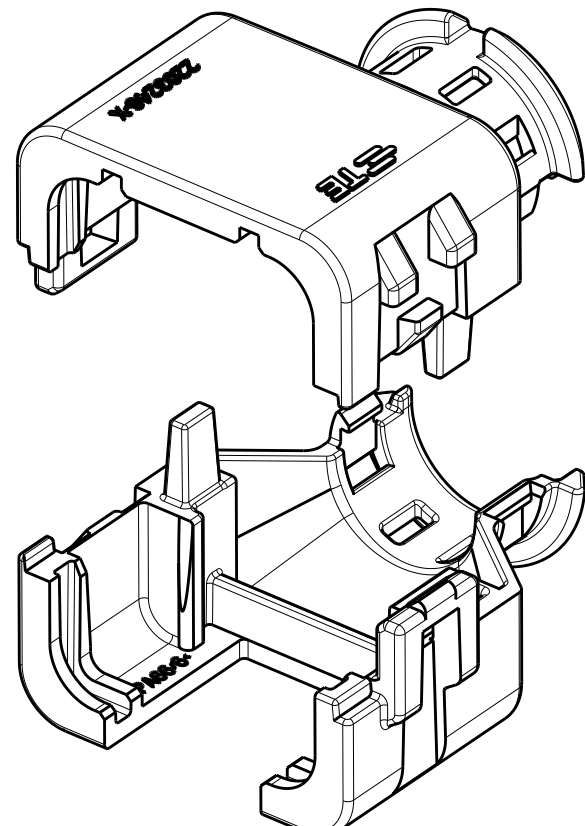


D

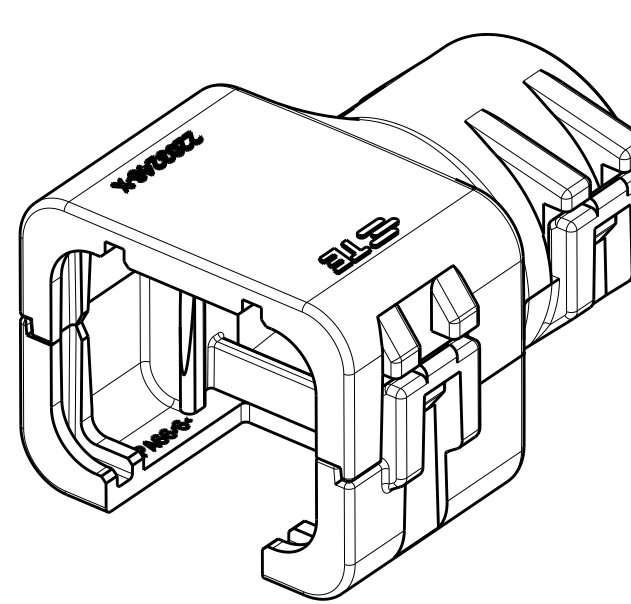


2292800-1
ASSEMBLED ISOMETRIC VIEW SHOWN

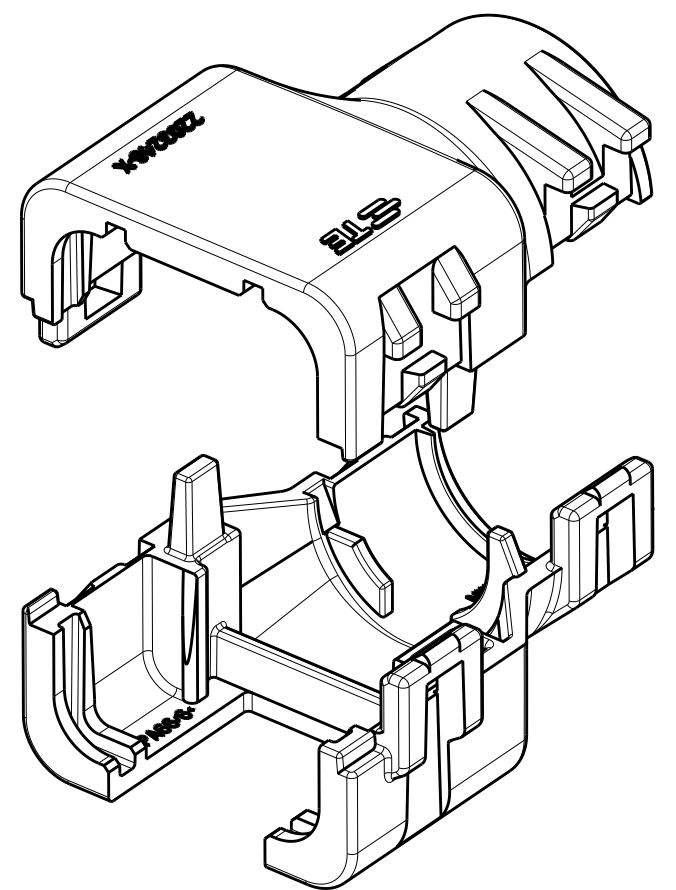


2292800-1
EXPLODED ISOMETRIC VIEW SHOWN

C

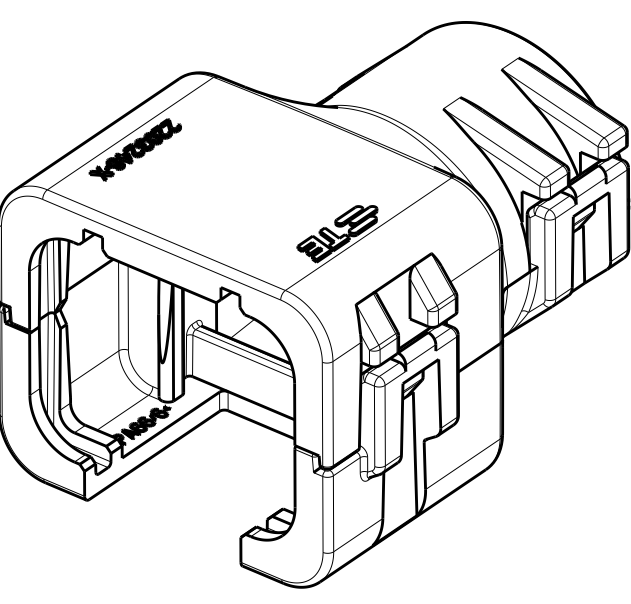


2292800-2
ASSEMBLED ISOMETRIC VIEW SHOWN

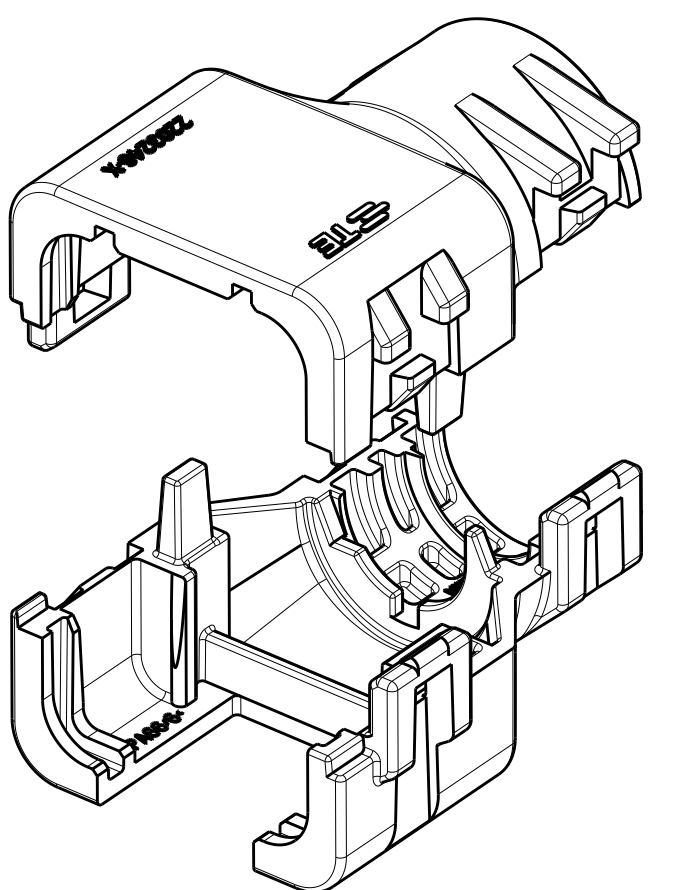


2292800-2
EXPLODED ISOMETRIC VIEW SHOWN

B

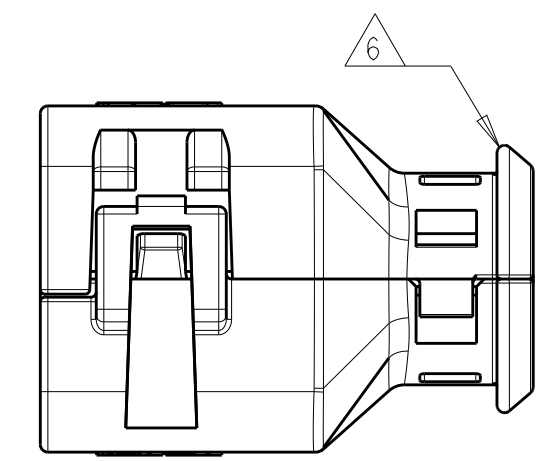
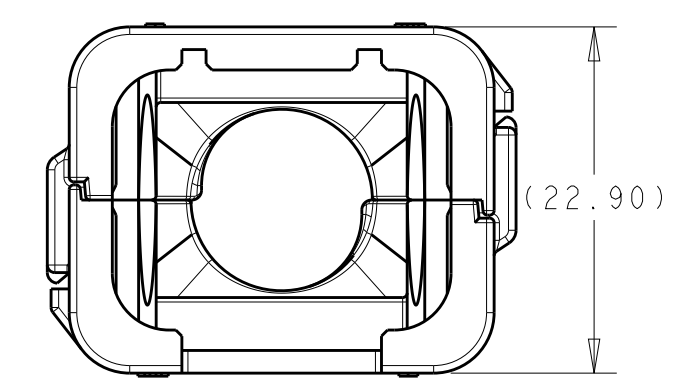
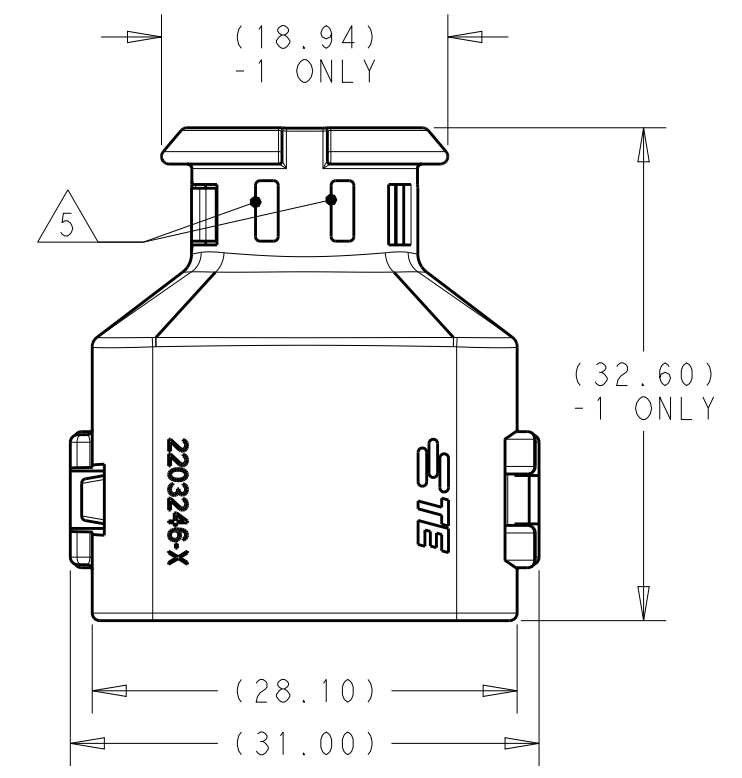


2292800-3
ASSEMBLED ISOMETRIC VIEW SHOWN



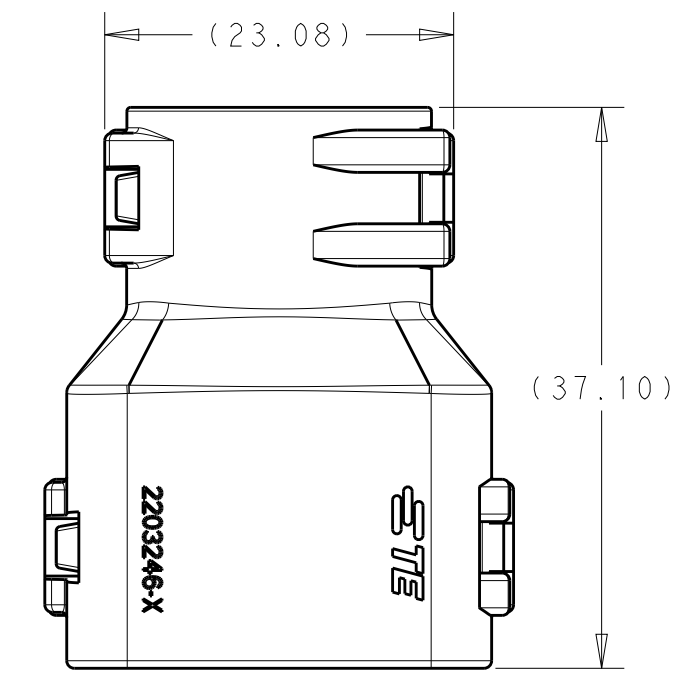
2292800-3
EXPLODED ISOMETRIC VIEW SHOWN

A



2292800-1
ASSEMBLED VIEW SHOWN
DIMENSIONS SHOWN TYPICAL FOR ALL PART NUMBERS
EXCEPT AS NOTED

3



2292800-2
ASSEMBLED VIEW SHOWN
DIMENSIONS SHOWN TYPICAL FOR -2 AND -3 ONLY

3

REVISIONS					
P	LTR	DESCRIPTION	DATE	DWN	APVD
	A	RELEASED PER ECO-15-010501	17JUL2015	JM	RB
	A1	REV PER ECO-16-008350	02JUN2016	JM	RB
	A2	REV PER ECO-16-013256	08SEP2016	JM	RB

- 1 MATERIAL: NYLON MOLDING COMPOUND, BLACK, PA66/6.
- 2 BACKSHELL DESIGNED SUCH THAT TWO HALVES ATTACH TO ONE ANOTHER AND CLAMP AROUND THE CONNECTOR COVER.
- 3 DIMENSIONS TO BE MEASURED WHEN BACKSHELLS ASSEMBLED.
- 4 PRODUCT WEIGHTS:
2292800-1: 5.00g ASSEMBLED
2292800-2: 6.37g ASSEMBLED
2292800-3: 6.95g ASSEMBLED
- 5 4mm WIDE SLOTS FOR TIE WRAP TO SECURE HARNESS WIRES (-1 ONLY).
- 6 HEAT SHRINK TUBING RETENTION FEATURE (-1 ONLY).
7. INSTRUCTION SHEET: 408-151043.
8. CONDUIT PROFILE: NORMAL ONLY


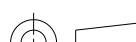
D

C

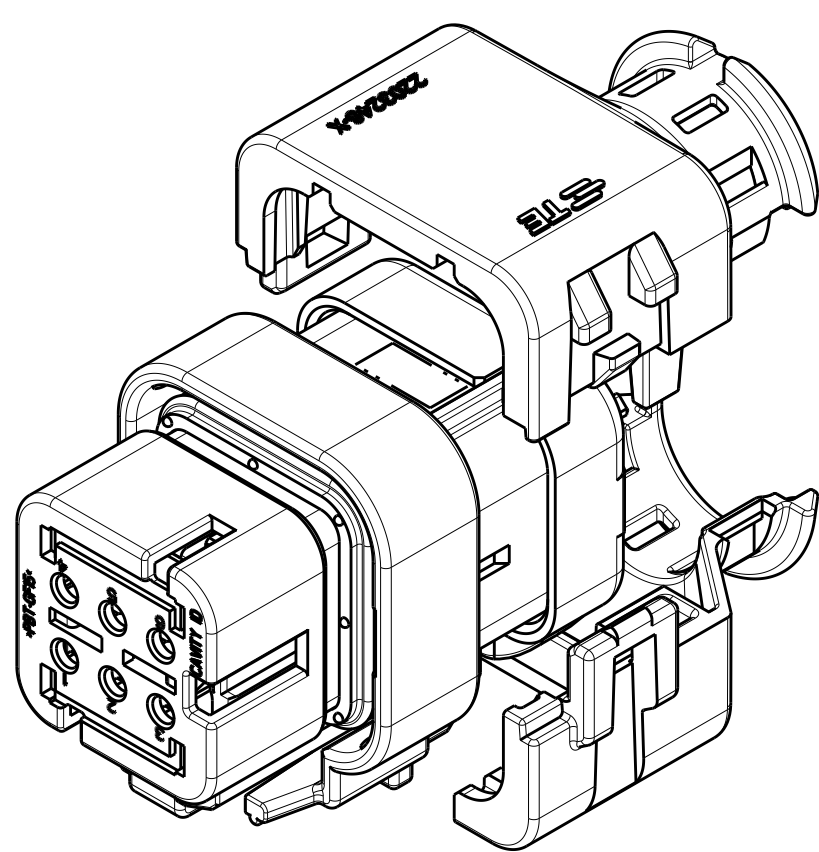
B

A

776433-X 776531-X	NC12	NW10	2292800-3
	NC16	NW13	2292800-2
	SMOOTH	SMOOTH	2292800-1
FITS ON PLUG ASSY	CORREGATE NC	CORREGATE NW	PART NUMBER
CONDUIT SIZE			

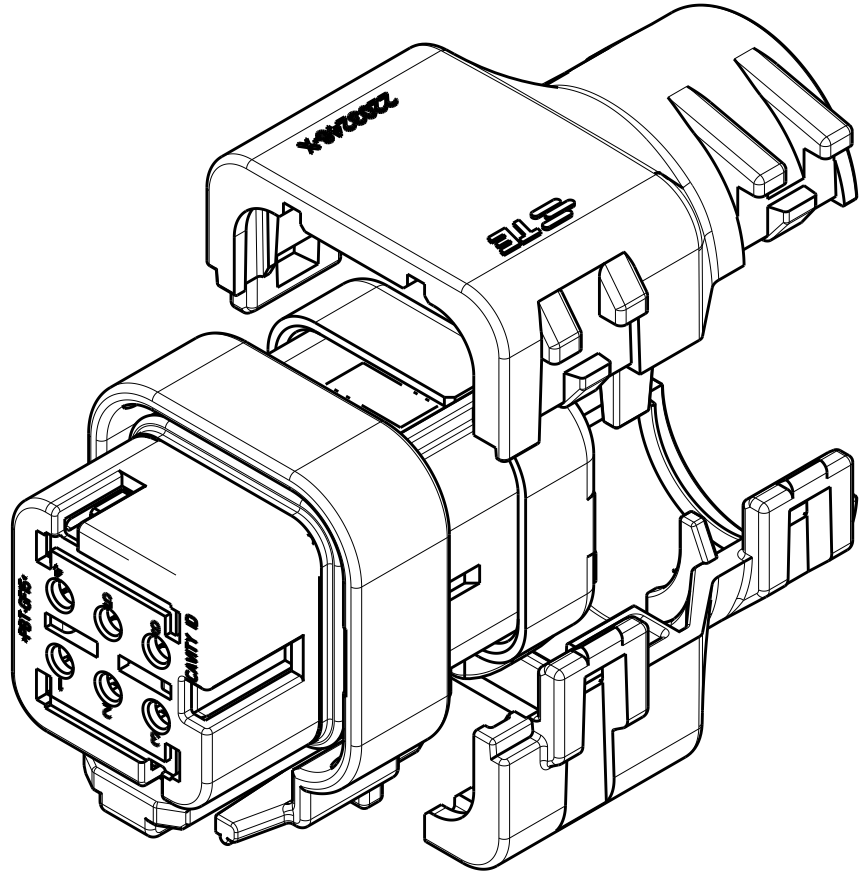
THIS DRAWING IS A CONTROLLED DOCUMENT.		DWN J MCNEAL 07MAY2015		 TE Connectivity			
DIMENSIONS: mm[INCHES]		CHK R BALTER 07MAY2015					
	TOLERANCES UNLESS OTHERWISE SPECIFIED: 0 PLC ±- 1 PLC ±- 2 PLC ±- 3 PLC ±- 4 PLC ±- ANGLES ±- FINISH -	APVD R BALTER 07MAY2015		NAME BACKSHELL KIT, 6 POSITION PLUG ASSY, AMPSEAL 16			
		PRODUCT SPEC 108-151043					
		APPLICATION SPEC -		SIZE A2	CAGE CODE 00779	DRAWING NO C-2292800	RESTRICTED TO -
		MATERIAL - - 1		WEIGHT - 4	CUSTOMER DRAWING		
				SCALE 2:1	SHEET 1 OF 2	REV A2	

REVISIONS					
P	LTR	DESCRIPTION	DATE	DWN	APVD
	-	SEE SHEET 1	-	-	-



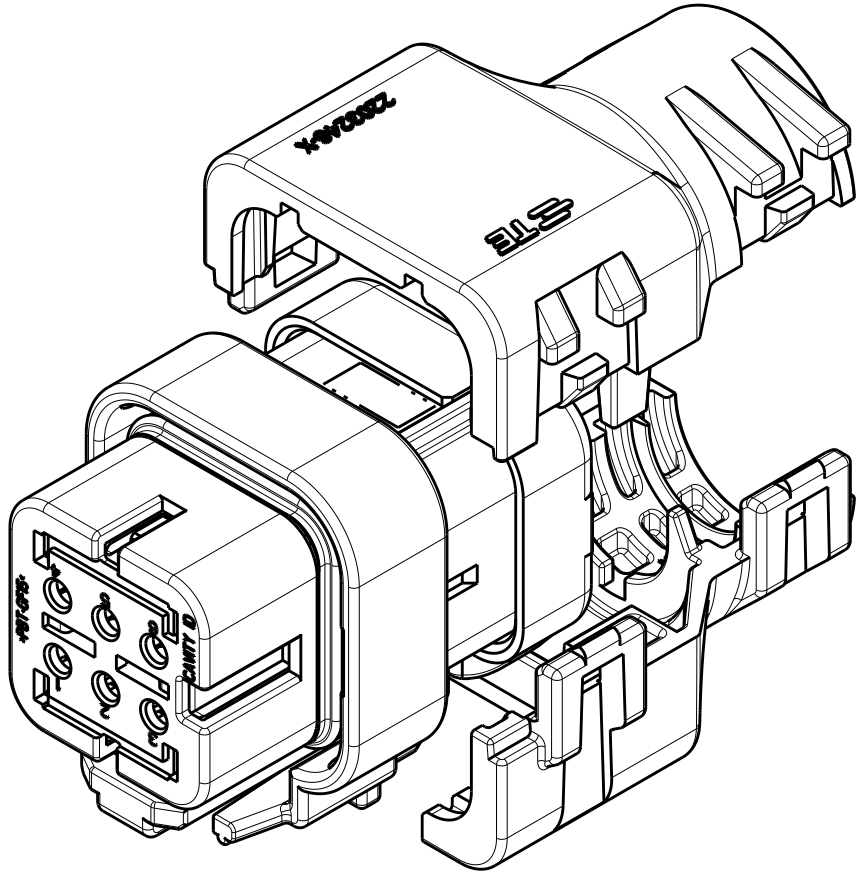
2292800-1
WITH PLUG ASSEMBLY
EXPLODED ISOMETRIC VIEW SHOWN

2



2292800-2
WITH PLUG ASSEMBLY
EXPLODED ISOMETRIC VIEW SHOWN

2



2292800-3
WITH PLUG ASSEMBLY
EXPLODED ISOMETRIC VIEW SHOWN

2

THIS DRAWING IS A CONTROLLED DOCUMENT.		DWN J. MCNEAL 07MAY2015	TE Connectivity		
DIMENSIONS: mm[INCHES]		CHK R. BALTER 07MAY2015			
		APVD R. BALTER 07MAY2015			
		PRODUCT SPEC 108-151043			
TOLERANCES UNLESS OTHERWISE SPECIFIED:		APPLICATION SPEC -	NAME BACKSHELL KIT, 6 POSITION PLUG ASSY, AMPSEAL 16		
MATERIAL -		WEIGHT -	SIZE A2	CAGE CODE 00779	DRAWING NO. C-2292800
FINISH -		CUSTOMER DRAWING	SCALE 2:1	SHEET 2 OF 2	REV A2