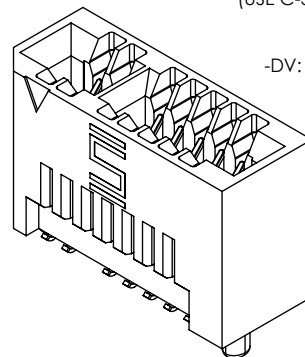
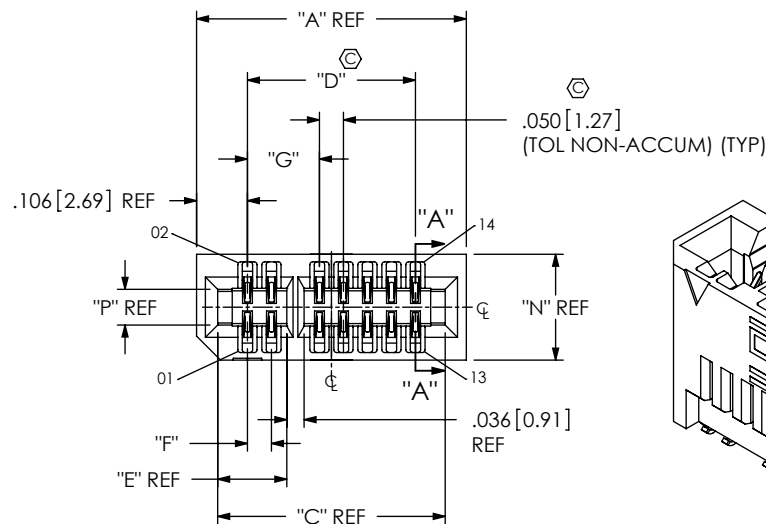


DO NOT
SCALE FROM
THIS PRINTNo OF POSITIONS (PER ROW)
-05, -08, -20, -30, -40, -50, *-60, *-70
(SEE TABLE 2 FOR POSITION
REMOVED TO POLARIZE)CARD THICKNESS
-01: .062" [1.57mm] THICK
-02: .093" [2.36mm] THICKPLATING SPECIFICATION
-L: SELECTIVE LIGHT GOLD/TIN TAIL
(USE C-308-01-L)ROW SPECIFICATION
-DV: DOUBLE ROW VERTICAL

PACKAGING

-K: POLYIMIDE FILM PAD (SEE TABLE 6, SHT 2)
AVAILABLE WITH -TR ONLY.
(-05 THRU -50 POS ONLY)
-TR: TAPE & REEL (-05 THRU -50 POS ONLY)

OPTION

-NP: NON-POLARIZED
(-05, -08, -20 & -30 POSITIONS ONLY)
(USE MECF-XX-XX-DV-NP)
-WT: WELD TABS
(STANDARD ON -02 CARD THICKNESS)
(OPTIONAL ON -01 CARD THICKNESS)

(* = NOT TOOLED)

TABLE 1	
No OF POS	COPLANARITY
-05 THRU -30	.0040 [0.102]
-40 THRU -70	.0060 [0.157]

TABLE 2

No OF POS	POLARIZED POSITIONS	"Y"
**05	3, 4	2
**08	5, 6	2
**20	15, 16	2
**30	21, 22	2
**40	31, 32	2
**50	41, 42	2
***60	31, 32 & 63, 64	4
***70	53, 54 & 115, 116	4

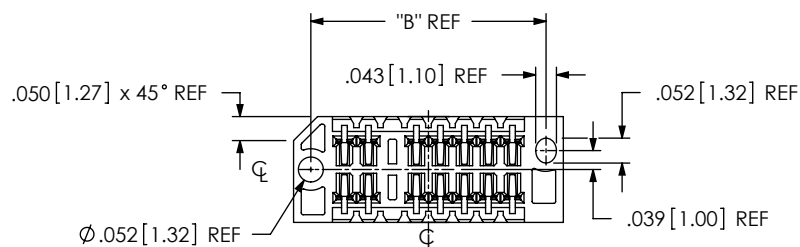
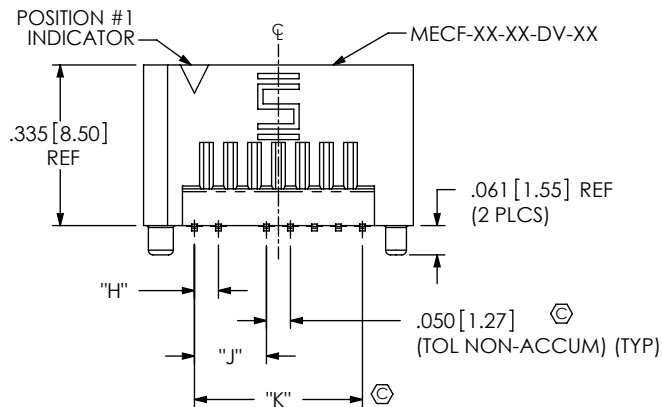
(* = NOT TOOLED)
(** = TOTAL NUMBER OF POSITIONS
WILL BE REDUCED BY "Y" FOR
POLARIZATION)

TABLE 3						
No. OF POS. PER ROW	"A"	"B"	"C"	"D"	"E"	
-05	0.412 [10.46]	0.340 [8.64]	0.3240 [8.230]	0.200 [5.08]	0.094 [2.39]	
-08	0.562 [14.27]	0.490 [12.45]	0.4740 [12.040]	0.350 [8.89]	0.144 [3.66]	
-20	1.162 [29.51]	1.090 [27.69]	1.0740 [27.280]	0.950 [24.13]	0.394 [10.01]	
-30	1.662 [42.21]	1.590 [40.39]	1.5740 [39.980]	1.450 [36.83]	0.544 [13.82]	
-40	2.162 [54.91]	2.090 [53.09]	2.0740 [52.680]	1.950 [49.53]	0.794 [20.17]	
-50	2.662 [67.61]	2.590 [65.79]	2.5740 [65.380]	2.450 [62.23]	1.044 [26.52]	
*-60	3.162 [80.31]	3.090 [78.49]	3.0740 [78.080]	2.950 [74.93]	0.794 [20.17]	
*-70	3.662 [93.01]	3.590 [91.19]	3.5740 [90.780]	3.450 [87.63]	1.344 [34.14]	
No. OF POS. PER ROW	"F"	"G"	"H"	"J"	"K"	
-05	N/A	N/A	0.1000 [2.540]	N/A	0.100 [2.54]	0.200 [5.08]
-08	0.0500 [1.270]	0.1500 [3.810]	0.050 [1.27]	0.150 [3.81]	0.350 [8.89]	
-20	0.3000 [7.620]	0.4000 [10.160]	0.300 [7.62]	0.400 [10.16]	0.950 [24.13]	
-30	0.4500 [11.430]	0.5500 [13.970]	0.450 [11.43]	0.550 [13.97]	1.450 [36.83]	
-40	0.7000 [17.780]	0.8000 [20.320]	0.700 [17.78]	0.800 [20.32]	1.950 [49.53]	
-50	0.9500 [24.130]	1.0500 [26.670]	0.950 [24.13]	1.050 [26.67]	2.450 [62.23]	
*-60	0.7000 [17.780]	0.8000 [20.320]	0.700 [17.78]	0.800 [20.32]	2.950 [74.93]	
*-70	1.2500 [31.750]	1.3500 [34.290]	1.250 [31.75]	1.350 [34.29]	3.450 [87.63]	

(* = NOT TOOLED)

TABLE 4				
CARD THICKNESS	"N"	"P"	"R"	"S"
-01 (.062 in)	0.220 [5.60]	0.074 [1.89]	0.022 [0.55]	0.183 [4.66]
-02 (.093 in)	0.248 [6.30]	0.106 [2.68]	0.053 [1.34]	0.215 [5.45]

FIG 1

(MECF-08-01-XX-DV-XX SHOWN)

NOTES:

1. Ⓢ REPRESENTS A CRITICAL DIMENSION.
2. BURR ALLOWANCE: .0015 [0.04] MAX.
3. MINIMUM PUSHOUT FORCE: 0.50 LBS.
4. ALL TAIL TO TAIL DIMENSIONS MEASURED TIP TO TIP.
5. ASSEMBLIES TO BE PACKAGED IN TUBES, UNLESS -TR IS SPECIFIED.
6. MATING EDGE CARD THICKNESS TOLERANCE NOT TO EXCEED ±10%

UNLESS OTHERWISE SPECIFIED,
DIMENSIONS ARE IN INCHES
[MILLIMETERS]TOLERANCES ARE:
DECIMALS ANGLES
.XX: ± .01 [0.3]
.XXX: ± .005 [0.13]
.XXXX: ± .0020 [0.051]

PROPRIETARY NOTE

THIS DOCUMENT CONTAINS INFORMATION
CONFIDENTIAL AND PROPRIETARY TO
SAMTEC, INC. AND SHALL NOT BE REPRODUCED
OR TRANSFERRED TO OTHER DOCUMENTS OR
DISCLOSED TO OTHERS OR USED FOR ANY
PURPOSE OTHER THAN THAT WHICH IT WAS
OBTAINED WITHOUT THE EXPRESSED WRITTEN
CONSENT OF SAMTEC, INC.

MATERIAL: DO NOT SCALE DRAWING

INSULATOR: LCP
COLOR: -01 CARD THICKNESS BLACK,
-02 CARD THICKNESS NATURAL
CONTACT: BeCu ALLOY

SHEET SCALE: 1:0.4

520 PARK EAST BLVD, NEW ALBANY, IN 47150
PHONE: 812-944-6733 FAX: 812-948-5047
e-Mail: info@SAMTEC.com code: 55322

DESCRIPTION:

MECF .050" EDGE CARD ASSEMBLY

DWG. NO.

MECF-XX-XX-XX-DV-XX-XX

BY: KNOWLDEN

3/12/10

SHEET 1 OF 3

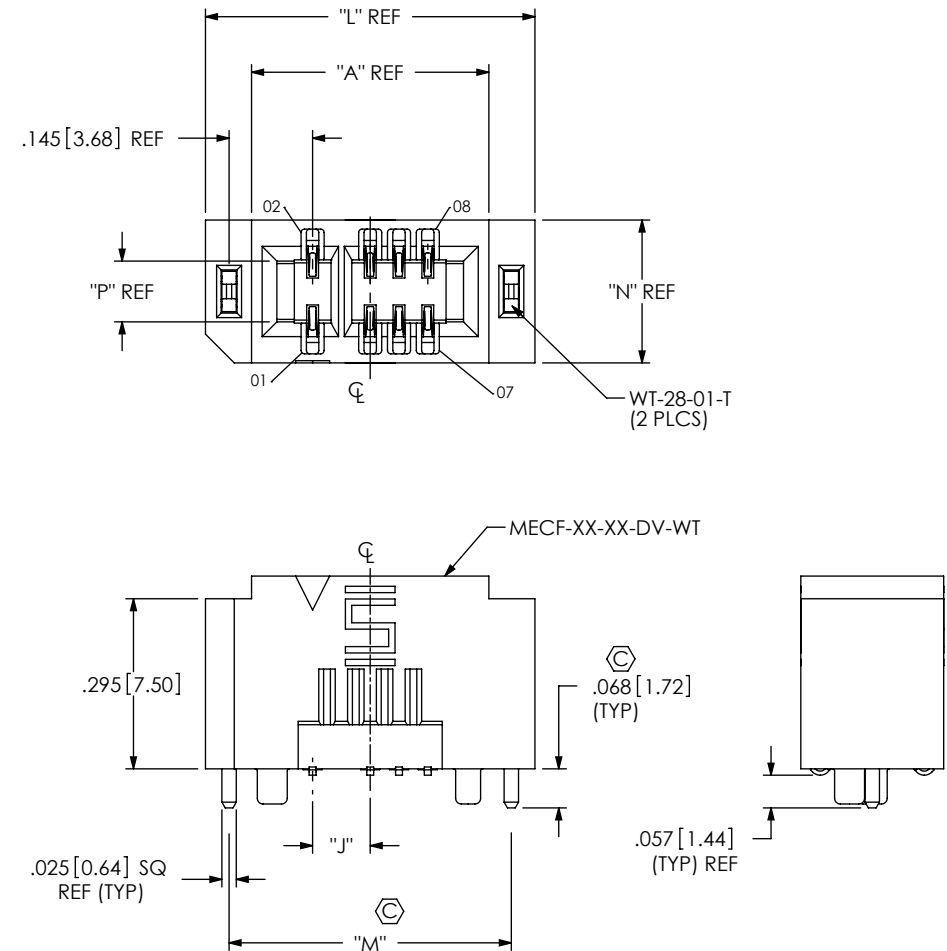


TABLE 5					
No. OF POS. PER ROW	"L"		"M"		
-05	0.572	[14.53]	0.490	[12.45]	
-08	0.722	[18.34]	0.640	[16.26]	
-20	1.322	[33.58]	1.240	[31.50]	
-30	1.822	[46.28]	1.740	[44.20]	
-40	2.322	[58.98]	2.240	[56.90]	
-50	2.822	[71.68]	2.740	[69.60]	
*-60	3.322	[84.38]	3.240	[82.30]	
*-70	3.822	[97.08]	3.740	[95.00]	

(* = NOT TOOLED)

FIG 2
(MECE-05-02-XX-DV-WT SHOWN)
(SAME AS FIG 1, EXCEPT AS SHOWN)

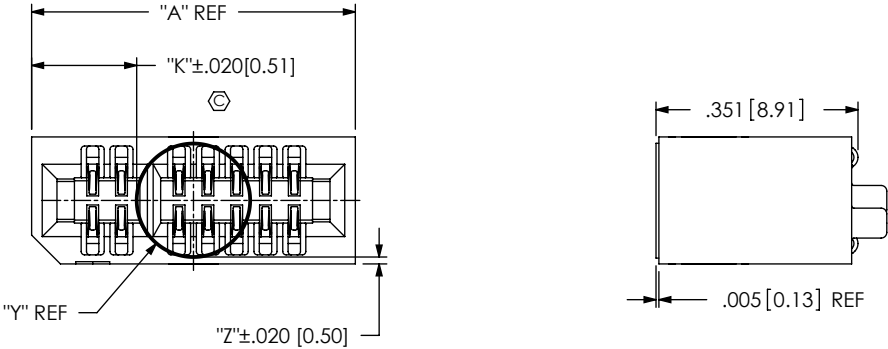
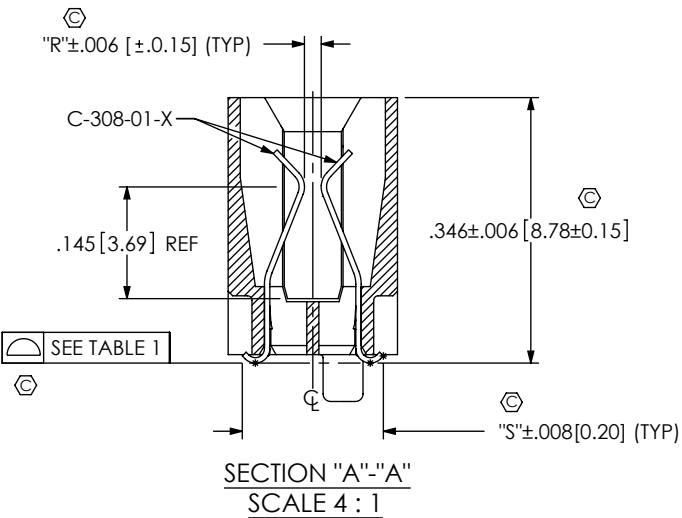


FIG 3
-K OPTION
(MECE-08-02-XX-DV-WT SHOWN)

TABLE 6									
BOARD THICKNESS	"Y"	"Z"	"K"						KAPTON CALL-OUT
			No OF POSITIONS PER ROW						
			-05	-08	-20	-30	-40	-50	
-01	.197 [5.00]	.012 [.30]	.108 [2.74]	.183 [4.65]	.483 [12.27]	.733 [18.62]	.983 [24.97]	1.233 [31.32]	K-DOT-.197-.344-.005
-02	.236 [5.70]	.006 [.15]	.088 [2.24]	.163 [4.14]	.463 [11.76]	.713 [18.11]	.963 [24.46]	1.213 [30.81]	K-DOT-.236-.343-.005
-01 WITH -WT	.197 [5.00]	.012 [.30]	.188 [4.78]	.263 [6.68]	.563 [14.30]	.813 [20.65]	1.063 [27.00]	1.313 [33.35]	K-DOT-.197-.344-.005
-02 WITH -WT	.236 [5.72]	.006 [.15]	.168 [4.42]	.243 [6.32]	.543 [13.94]	.793 [20.29]	1.043 [26.64]	1.293 [32.99]	K-DOT-.236-.343-.005

PROPRIETARY NOTE

THIS DOCUMENT CONTAINS INFORMATION CONFIDENTIAL AND PROPRIETARY TO SAMTEC, INC. AND SHALL NOT BE REPRODUCED OR TRANSFERRED TO OTHER DOCUMENTS OR DISCLOSED TO OTHERS OR USED FOR ANY PURPOSE OTHER THAN THAT WHICH IT WAS OBTAINED WITHOUT THE EXPRESSED WRITTEN CONSENT OF SAMTEC, INC.

DO NOT SCALE DRAWING

SHEET SCALE: 1:0.444444

520 PARK EAST BLVD, NEW ALBANY, IN 47150
PHONE: 812-944-6733 FAX: 812-948-5047
e-Mail: info@SAMTEC.com code: 55322

DESCRIPTION:
MECE .050" EDGE CARD ASSEMBLY

DWG. NO.
MECE-XX-XX-XX-DV-XX-XX

BY: KNOWLDEN 3/12/10 SHEET 2 OF 3

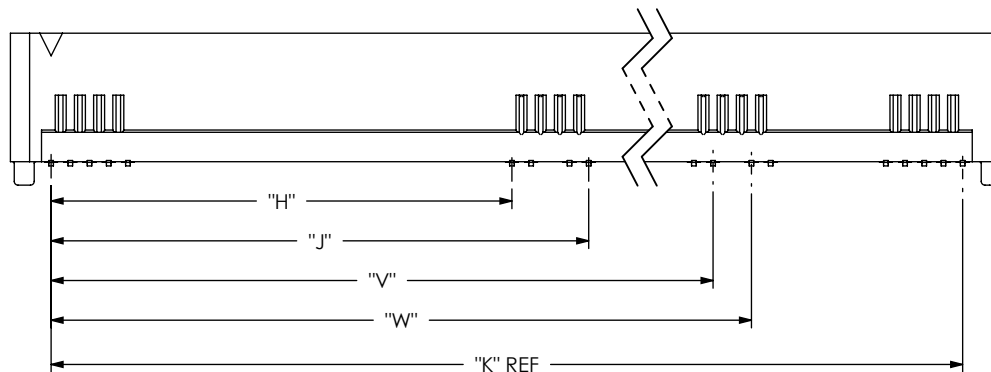
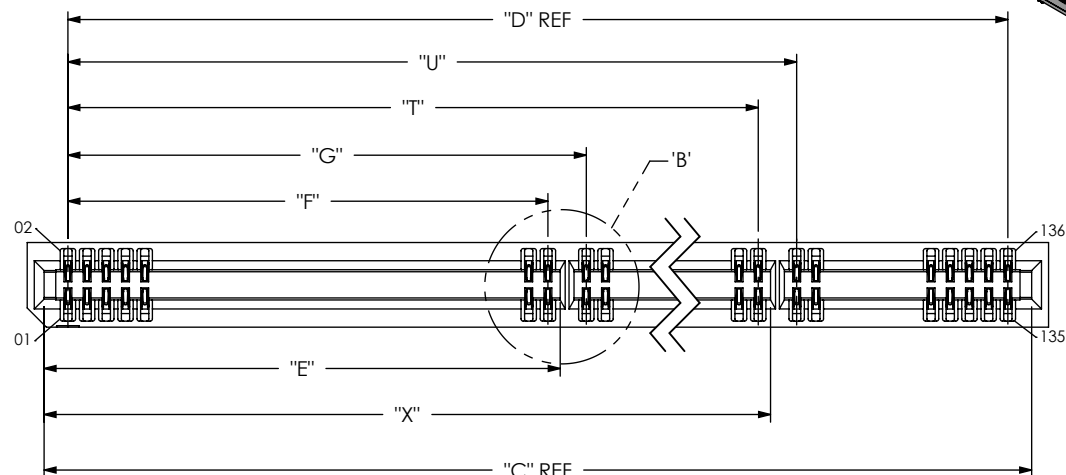
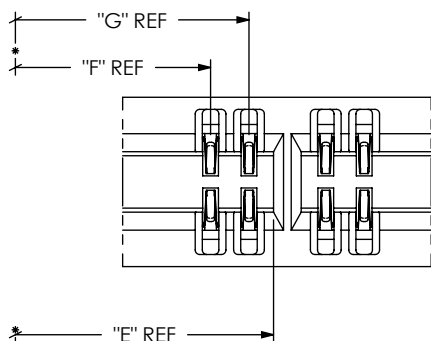
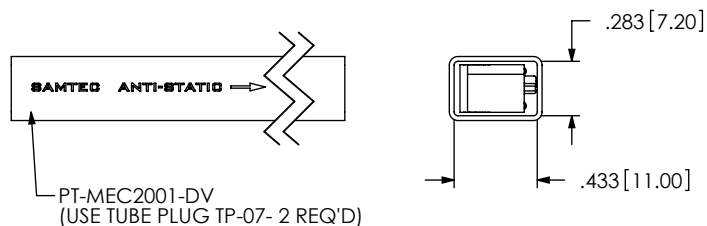
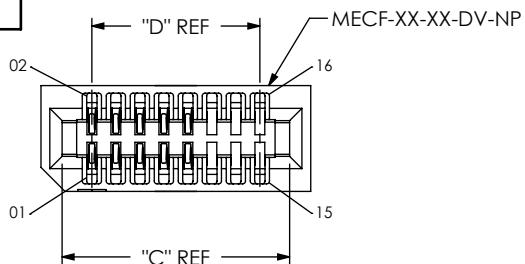


TABLE 7

No. OF POS. PER ROW	"T"		"U"		"V"		"W"		"X"	
*-60	1.5000	[38.100]	1.600	[40.640]	1.500	[38.10]	1.600	[40.64]	1.594	[40.49]
*-70	2.8000	[71.120]	2.900	[73.660]	2.800	[71.12]	2.900	[73.66]	2.894	[73.51]

(* = NOT TOOLED)

FIG 5
(MECF-70-01-XX-DV-XX SHOWN)
(SAME AS FIG 1, EXCEPT AS SHOWN)
(SOME CENTER FEATURES REMOVED FOR CLARITY)
(NOT TOOLED)

PROPRIETARY NOTE
THIS DOCUMENT CONTAINS INFORMATION
CONFIDENTIAL AND PROPRIETARY TO
SAMTEC, INC. AND SHALL NOT BE REPRODUCED
OR TRANSFERRED TO OTHER DOCUMENTS OR
DISCLOSED TO OTHERS OR USED FOR ANY
PURPOSE OTHER THAN THAT WHICH IT WAS
OBTAINED WITHOUT THE EXPRESSED WRITTEN
CONSENT OF SAMTEC, INC.

DO NOT SCALE DRAWING

SHEET SCALE: 1:0.4

samtec

520 PARK EAST BLVD, NEW ALBANY, IN 47150
PHONE: 812-944-6733 FAX: 812-948-5047
e-Mail: info@SAMTEC.com code: 55322

DESCRIPTION:
MECF .050" EDGE CARD ASSEMBLY

DWG. NO.
MECF-XX-XX-XX-DV-XX-XX

BY: KNOWLDEN3/12/10 SHEET 3 OF 3