

REVISIONS					
P	LTR	DESCRIPTION	DATE	DWN	APVD
	A	RELEASED PER ECO-16-006647	4MAY16	RS	EW

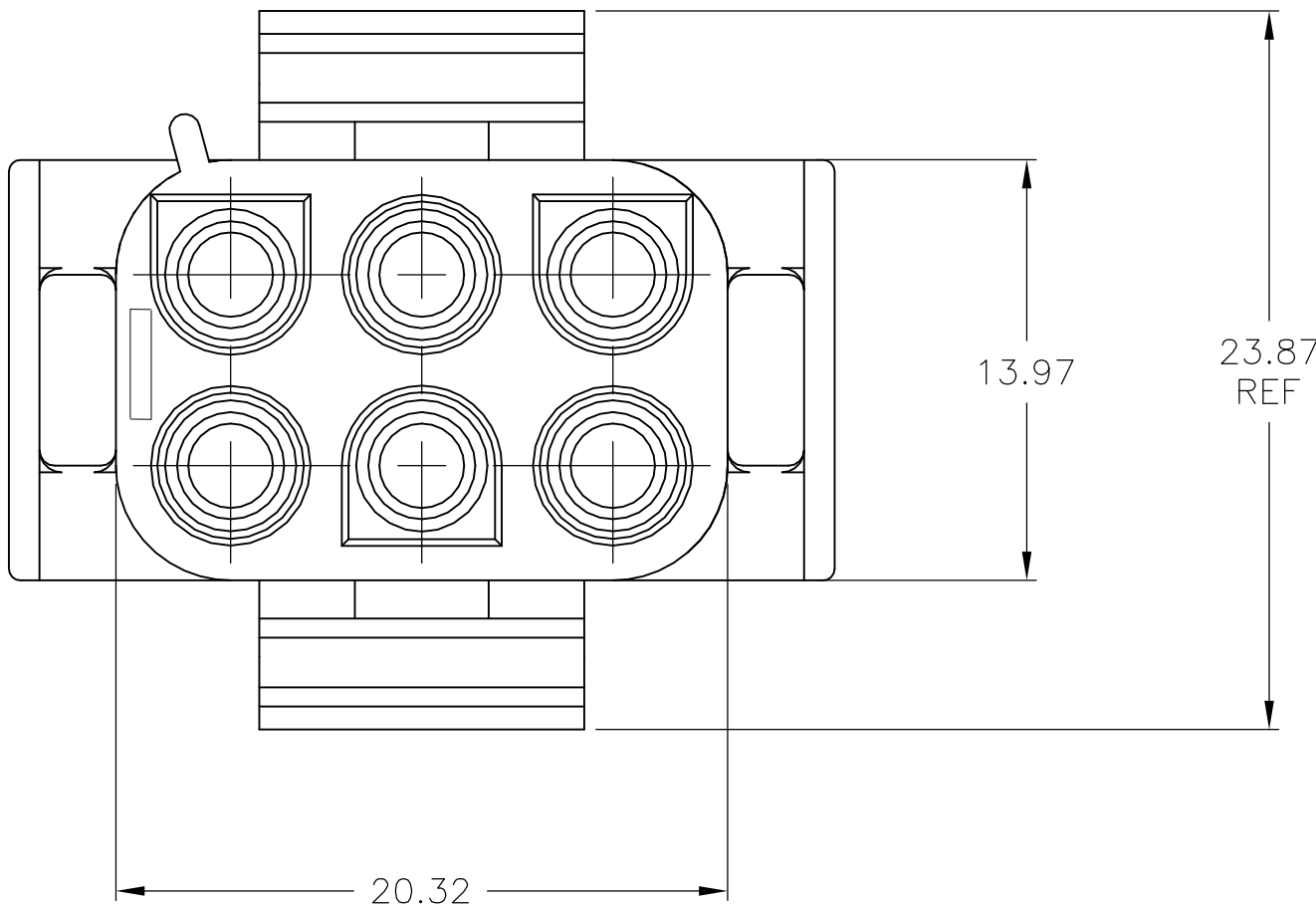
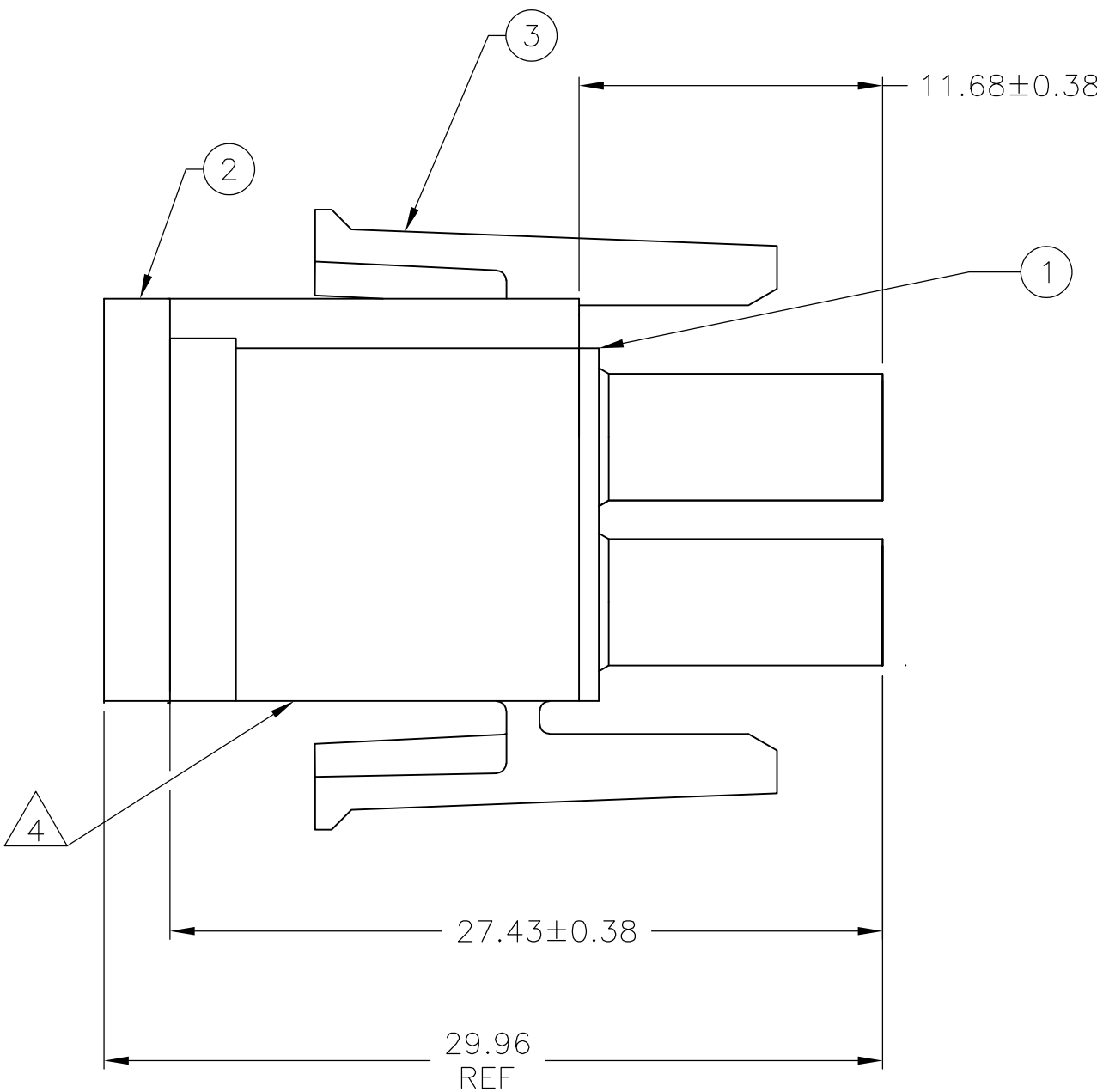
D

C

B

A

1.5	.05
0.75	.029
27.43	1.080
20.32	.800
13.97	.550
11.68	.460
3	.118
0.38	.015
0.13	.005
MM	IN
CONVERSION TABLE	



- MATES WITH APPROPRIATE UNIVERSAL MATE-N<sup>™</sup>LOK CAP OR HEADER.
- SMALL NICKS ARE PERMITTED ON THE CIRCUIT TOWERS WHICH COULD INCREASE THE INITIAL HOUSING MATING FORCE BY UP TO 4.4 NEWTONS [1.0 LBS]. NO INDIVIDUAL NICKED TOWER SHALL INCREASE THIS FORCE BY OVER 2.2 NEWTONS [.5 LBS].
- MANUFACTURING LOCATION ID ON SIDE OF HOUSING (OPTIONAL).
- UNDERWRITERS RECOGNIZED COMPONENT LOGO AND CSA CERTIFICATION LOGO TO BE LOCATED ONCE EACH ON SIDE OF HOUSING.
- FLAMMABILITY V2 FOR THICKNESS 0.38mm, 1.5mm, and 3.0mm PER IEC 60695-11-10.
- GLOW-WIRE FLAMMABILITY (GWFI) 800°C FOR THICKNESS 0.38mm AND 0.75mm PER IEC 60695-2-12.
- GLOW-WIRE FLAMMABILITY (GWFI) 960°C FOR THICKNESS 1.5mm AND 3.0mm PER IEC 60695-2-12.
- GLOW-WIRE IGNITION (GWIT) 825°C FOR THICKNESS 0.38mm, 0.75mm, 1.5mm AND 3.0mm PER IEC 60695-2-13.
- SEALS TO BE FULLY SEATED TO HOUSING.

1	PC	06P UMNL PLUG HSG NATL, GW	3
1	PC	06P UMNL WIRE SEAL	2
1	PC	INTERFACE SEAL, 6 CIRCUIT, UNIVERSAL MATE-N-LOK	1
-1	U/M	DESCRIPTION	ITEM NO

THIS DRAWING IS A CONTROLLED DOCUMENT.		DWN NAGALAKSHMI, K 20OCT2015	TE Connectivity	
		CHK WICKES, EVAN C 20OCT2015		
DIMENSIONS: mm		APVD WICKES, EVAN C 20OCT2015	NAME	
		PRODUCT SPEC	PLUG, 6 CIRCUIT, UNIVERSAL MATE-N-LOK(TM)	
		APPLICATION SPEC		
		—		
		ANGLES FINISH		
MATERIAL NYLON,UL 94V-2		WEIGHT 0.000000	SIZE A1	CAGE CODE 00779
		DRAWING NO 1969779	RESTRICTED TO	—
		CUSTOMER DRAWING	SCALE 4:1	SHEET 1 OF 1