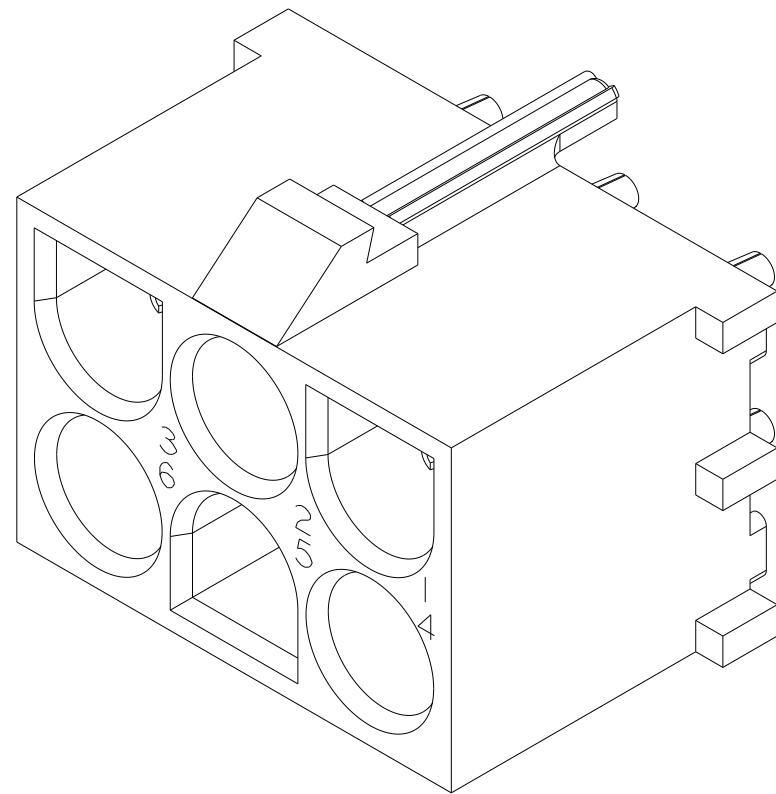
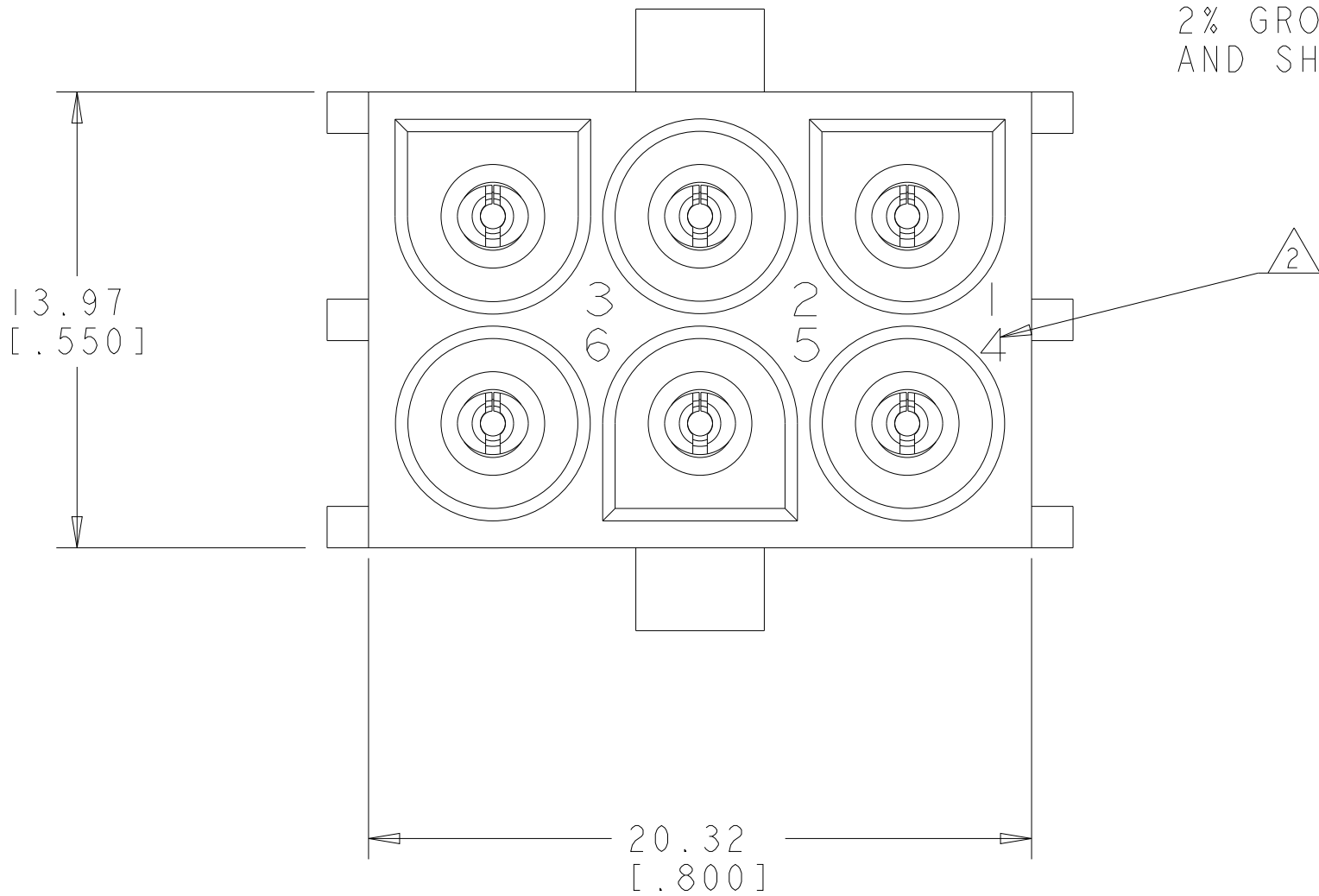
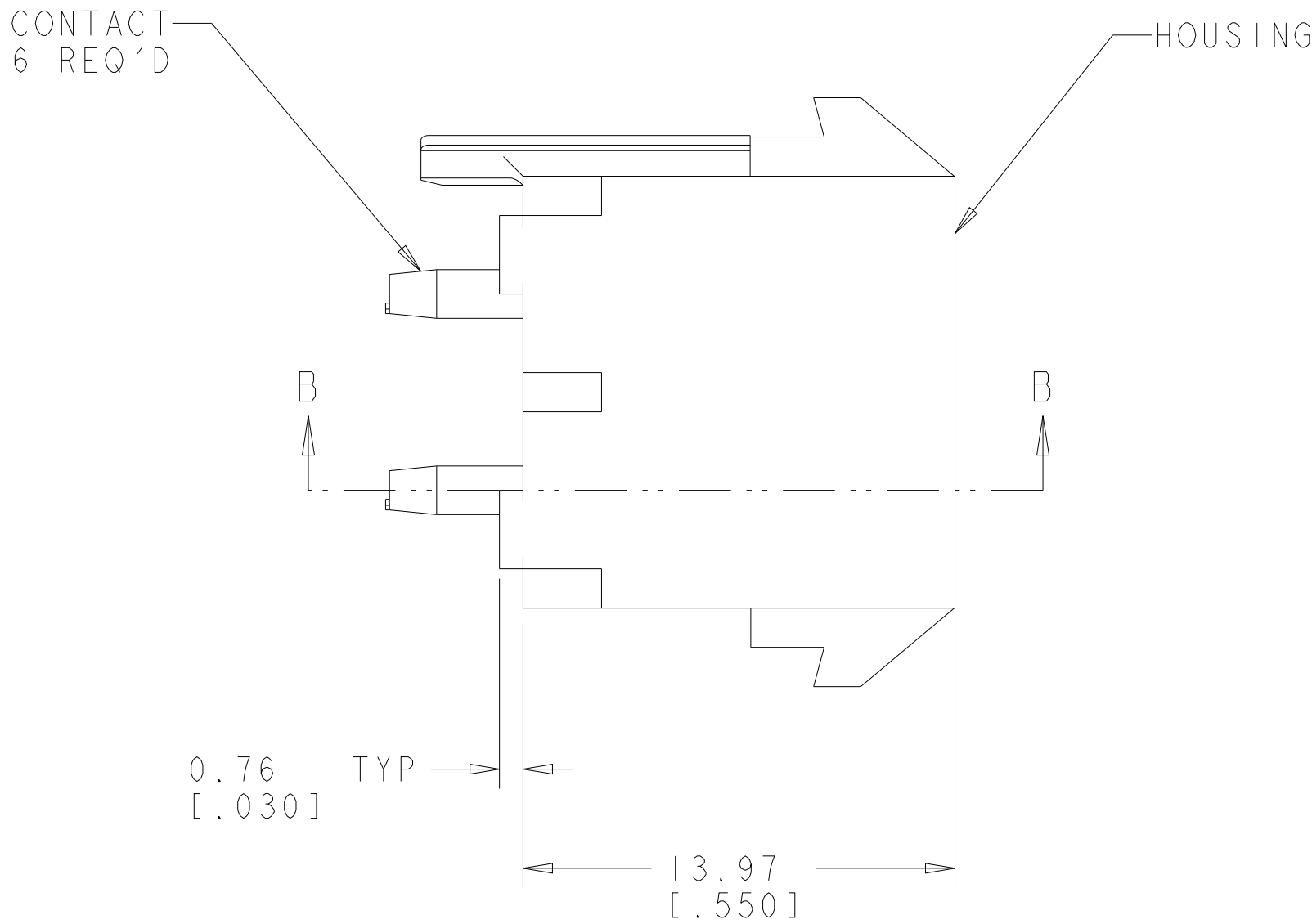
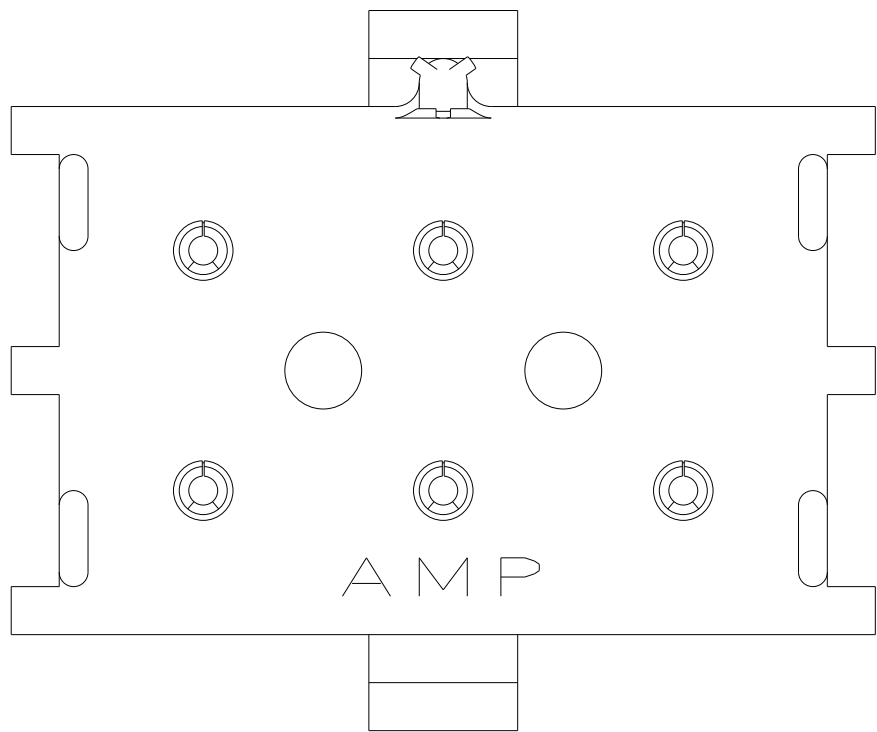
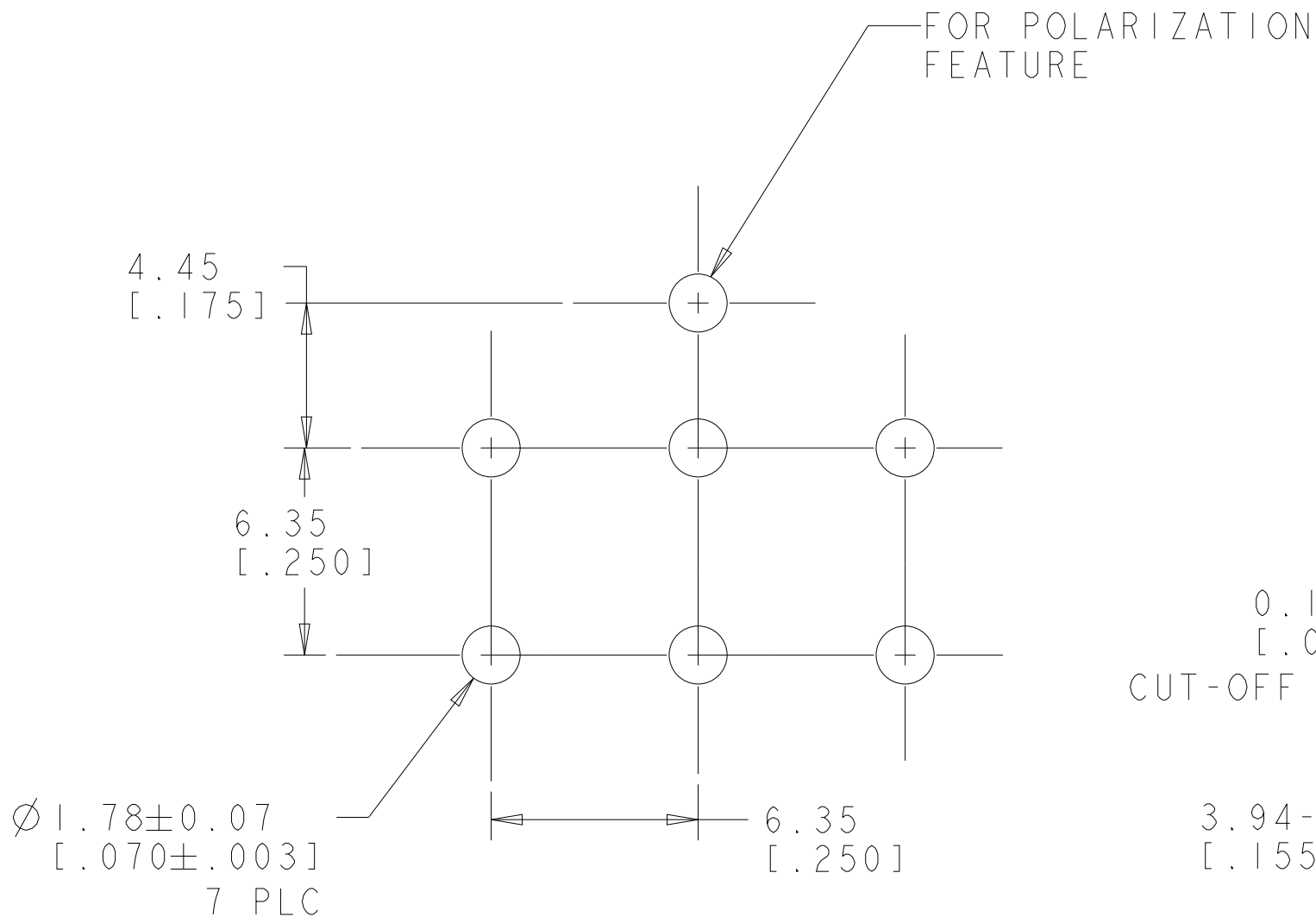


LOC		DIST		REVISIONS				
CM	00	P	LTR	DESCRIPTION	DATE	DWN	APVD	
		A1		REVISED PER ECR-12-011660	24JAN2013	KH	TM	
		A2		REVISED PER ECR-21-118133	22OCT2021	SS	VS	

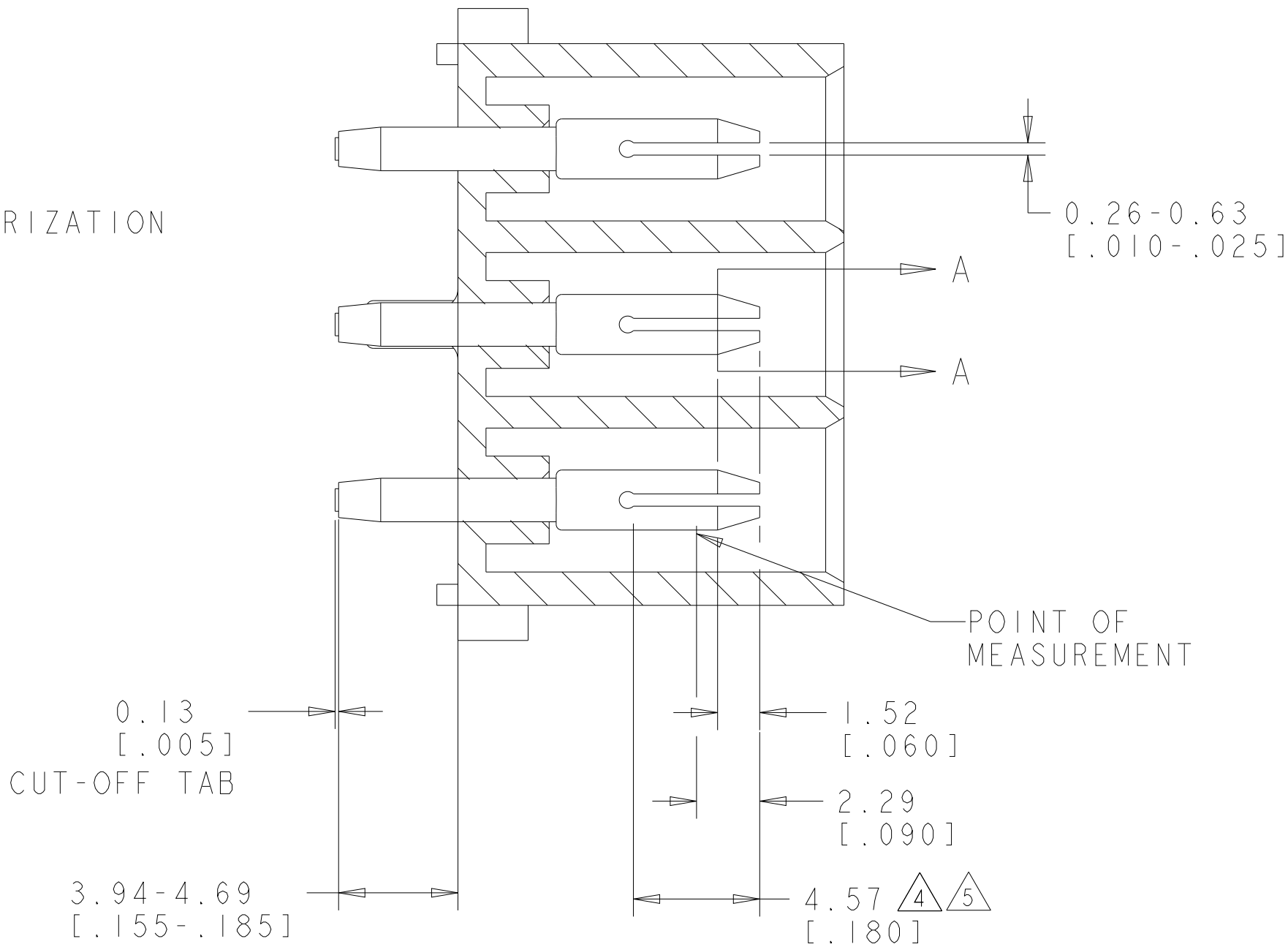
1. PARTS COMPLY TO AMP SOLDERABILITY SPECIFICATION 109-11-3.
2. CIRCUIT IDENTIFICATION CHARACTERS ARE ADJACENT TO THE INDICATED CAVITIES, BUT LOCATION AND ORIENTATION MAY DIFFER FROM PRINT.
3. DIMENSIONS IN BRACKETS ARE IN INCHES.
4. CONTACT IS PLATED OVERALL WITH 0.00127 [0.000050] NICKEL, THEN 0.00076 [0.000030] GOLD OVER CONTACT LENGTH INDICATED AND MATTE TIN LEAD ON SOLDER TAIL END.
5. CONTACT IS PLATED OVERALL WITH 0.00127 [0.000050] NICKEL, THEN 0.00076 [0.000030] GOLD OVER CONTACT LENGTH INDICATED AND MATTE TIN ON SOLDER TAIL END.
6. SUPERSEDED BY 1586090-3
7. DIMENSIONS SHOWN REPRESENT PRODUCT IN DRY CONDITION. ADDITIONAL 2% GROWTH DUE TO END USE LOCATION MOISTURE ABSORPTION MAY OCCUR AND SHOULD BE ACCOUNTED FOR.



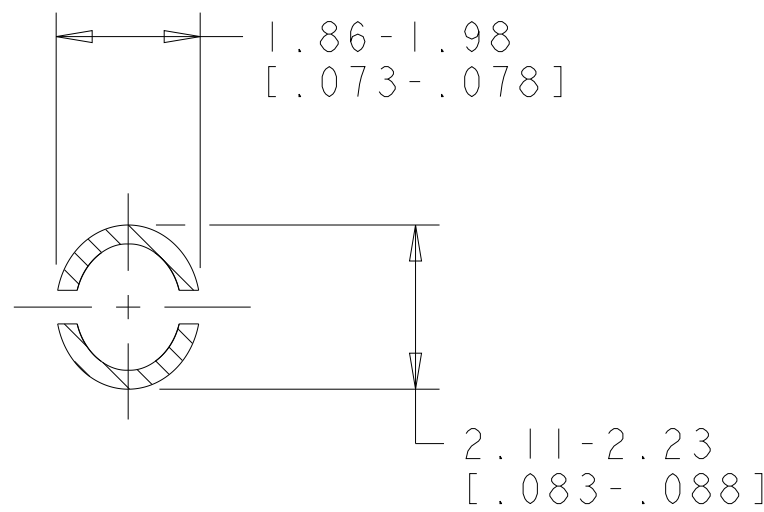
3 DIMENSIONAL MODEL
SCALE 4:1



RECOMMENDED MOUNTING HOLE PATTERN
FOR 1.57 [0.062] THICK P.C. BOARD

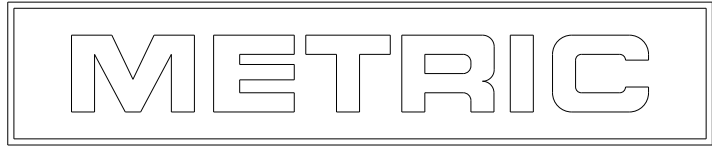


SECTION B-B



SECTION A-A
SCALE 10:1

PHOSPOR BRONZE, GOLD	NYLON, UL94V-2, NATURAL	1586090-3
PHOSPOR BRONZE, GOLD	NYLON, UL94V-2, NATURAL	1586090-2
PHOSPOR BRONZE, PRE-TIN	NYLON, UL94V-2, NATURAL	1586090-1
PIN CONTACT MATERIAL AND FINISH	HOUSING MATERIAL AND COLOR	PART NUMBER



THIS DRAWING IS A CONTROLLED DOCUMENT.		DWN K. WHITAKER 24-MAR-2003	TE Connectivity	
DIMENSIONS: mm[INCHES]		CHK S. RIDGILL 24-MAR-2003		
TOLERANCES UNLESS OTHERWISE SPECIFIED:		APVD S. RIDGILL 24-MAR-2003		
0 PLC ± 1 PLC ± 2 PLC ±0.13[0.005] 3 PLC ± 4 PLC ± ANGLES ±0°30' FINISH SEE TABLE		PRODUCT SPEC APPLICATION SPEC WEIGHT CUSTOMER DRAWING		
SIZE		CAGE CODE	DRAWING NO	RESTRICTED TO
A1		00779	©=1586090	REV A2
SCALE		5:1	SHEET 1 OF 1	