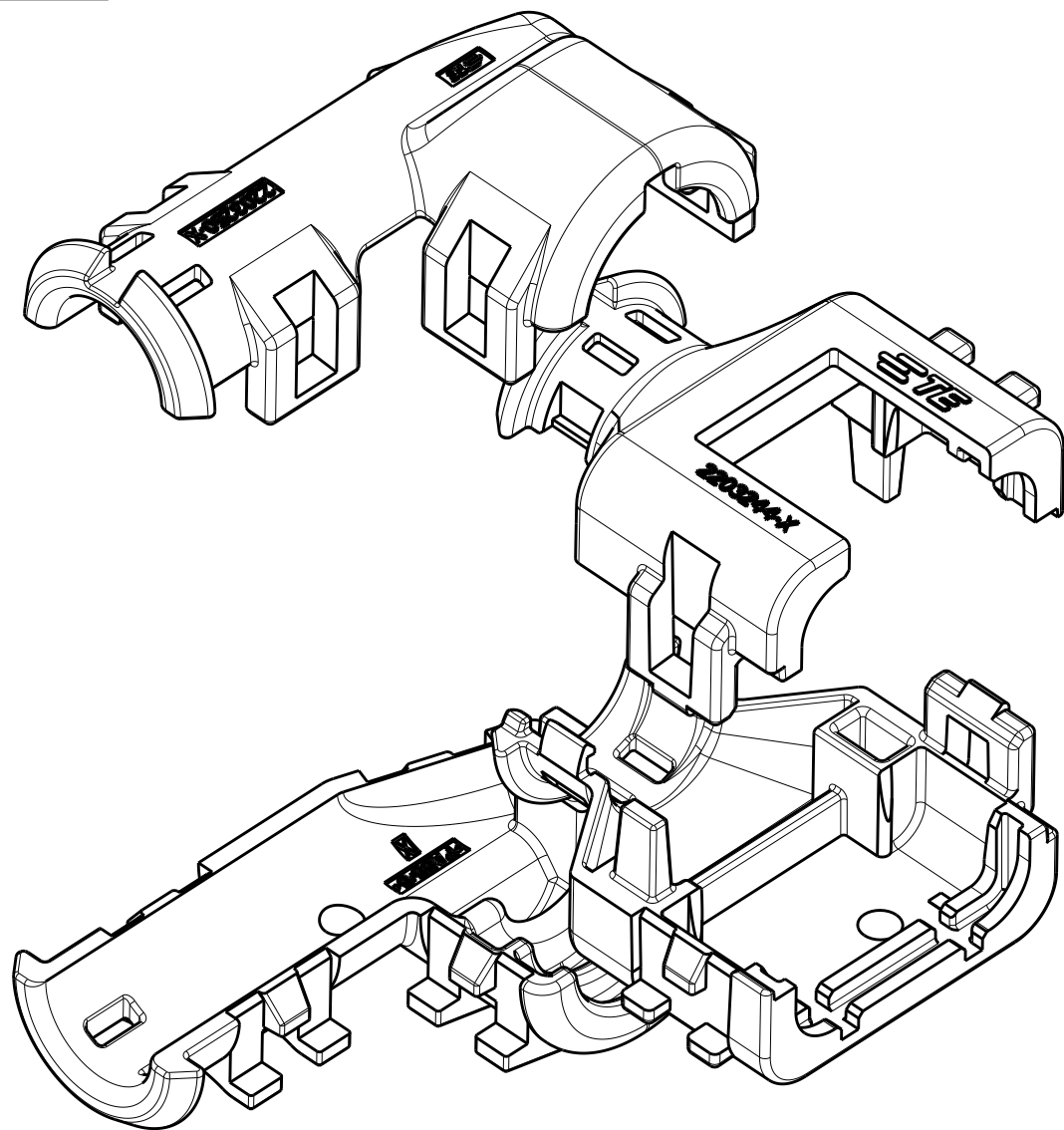
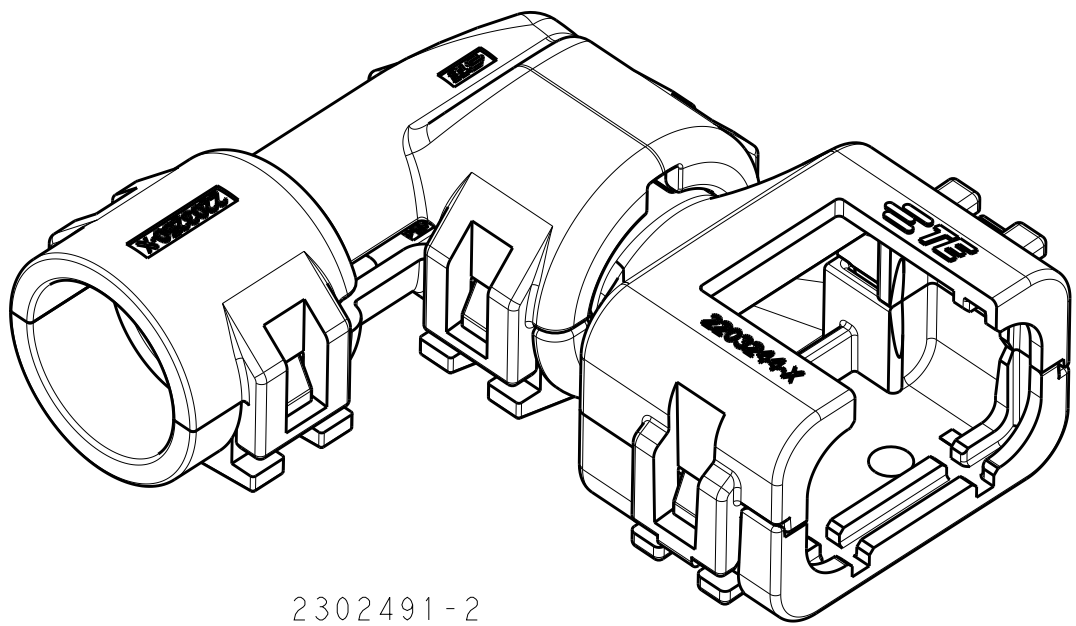


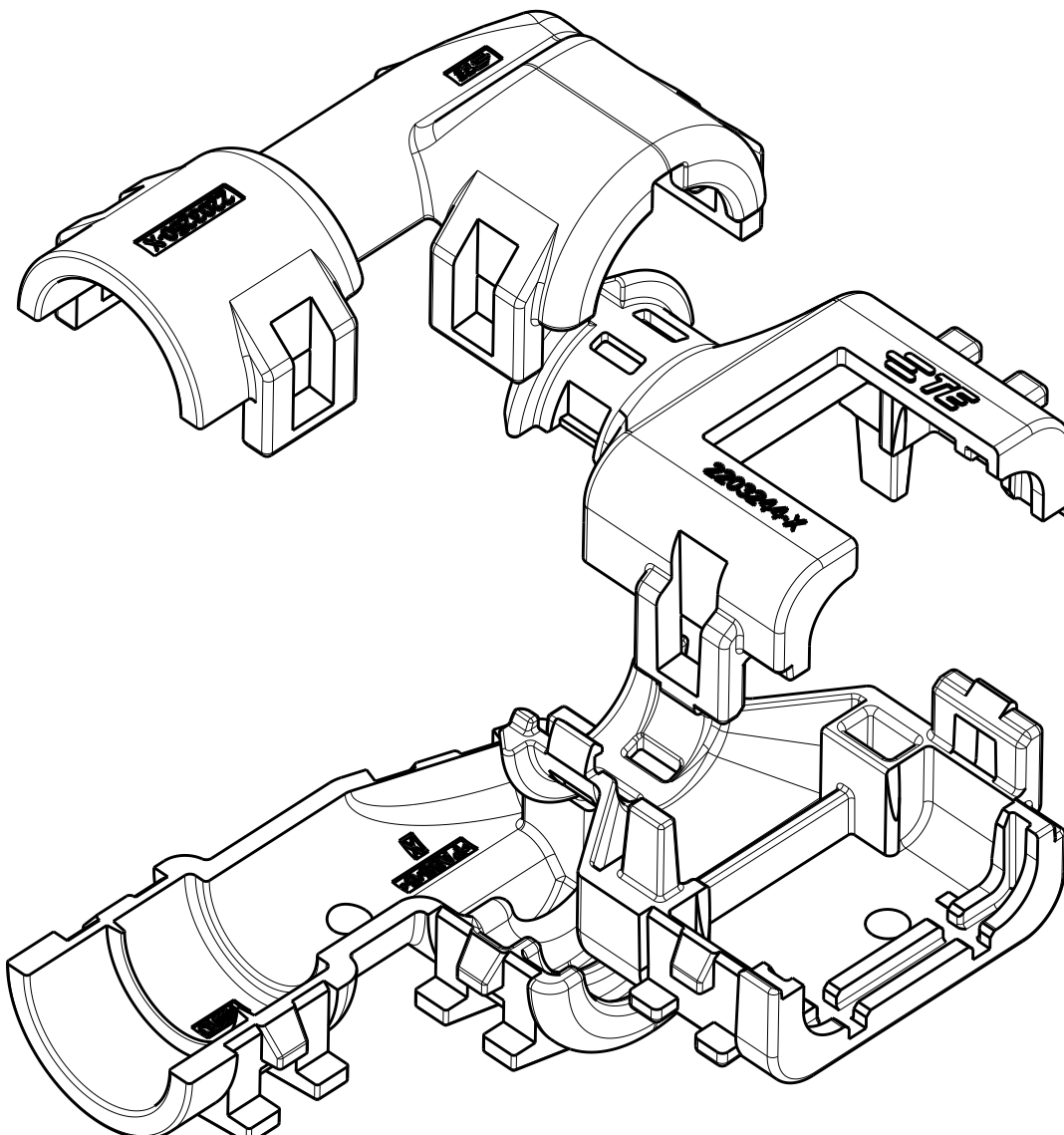
2302491-1
ASSEMBLED ISOMETRIC VIEW SHOWN



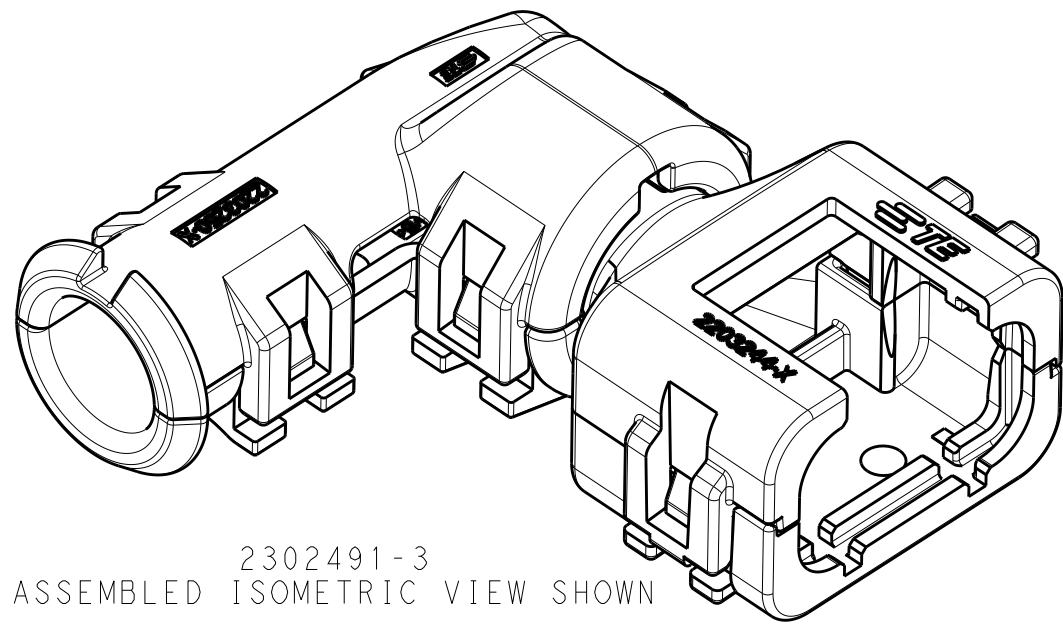
2302491-1
EXPLODED ISOMETRIC VIEW SHOWN



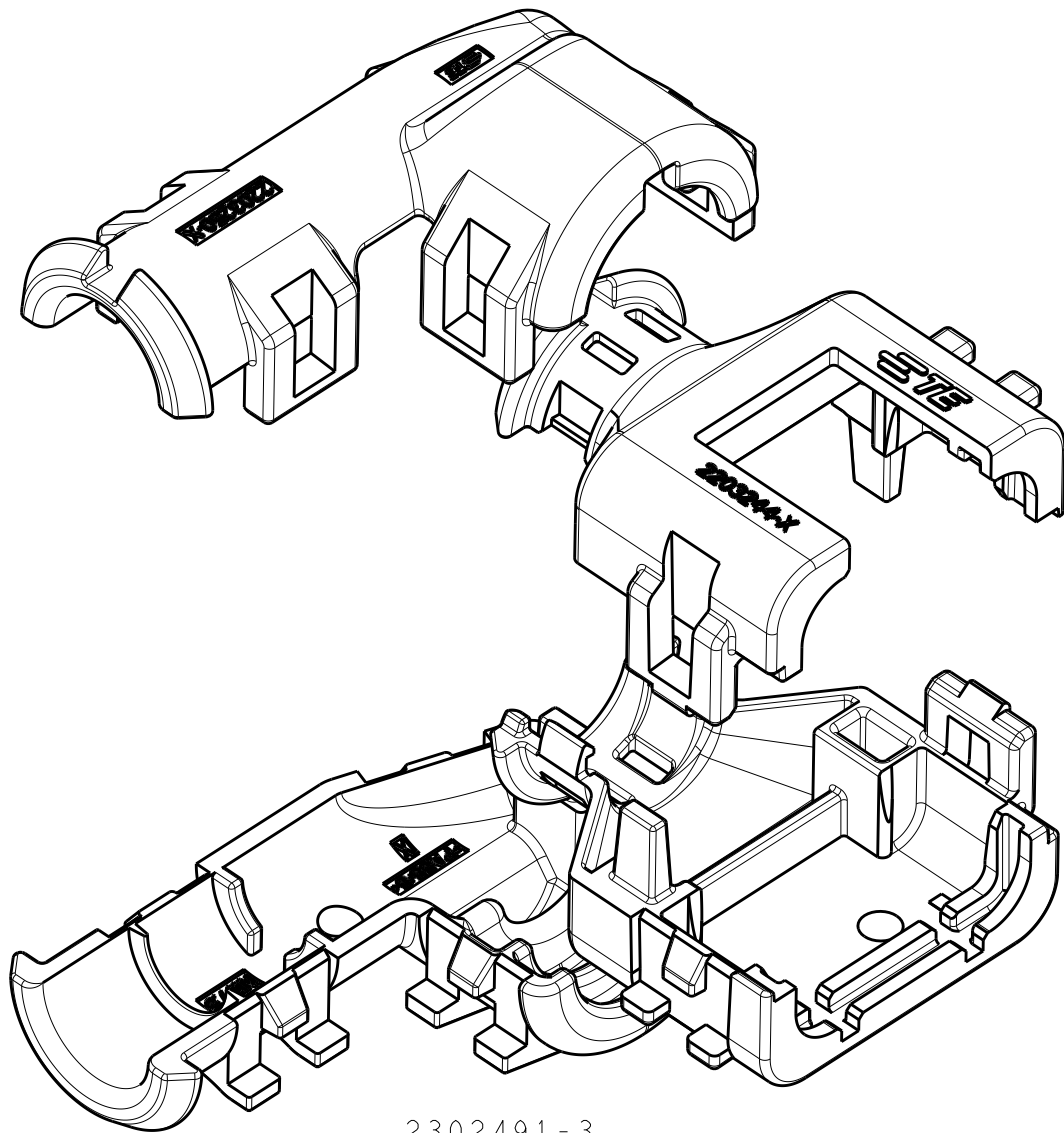
2302491-2
ASSEMBLED ISOMETRIC VIEW SHOWN



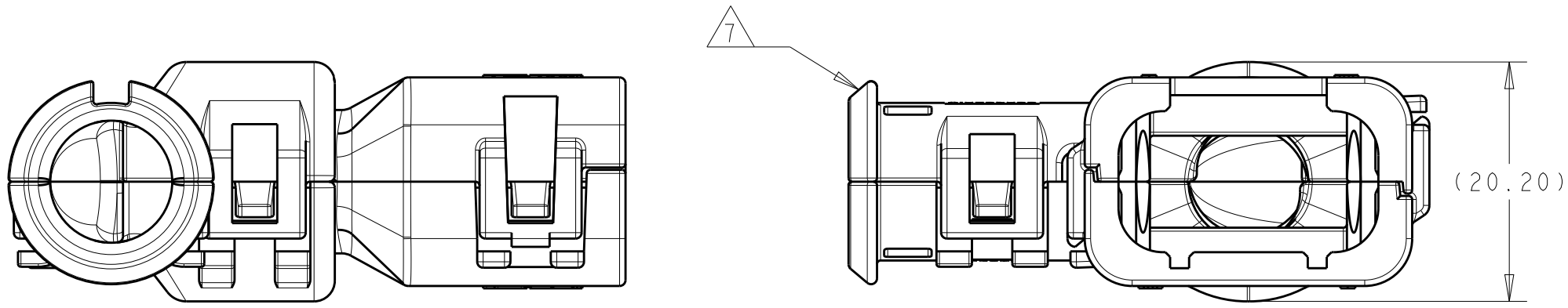
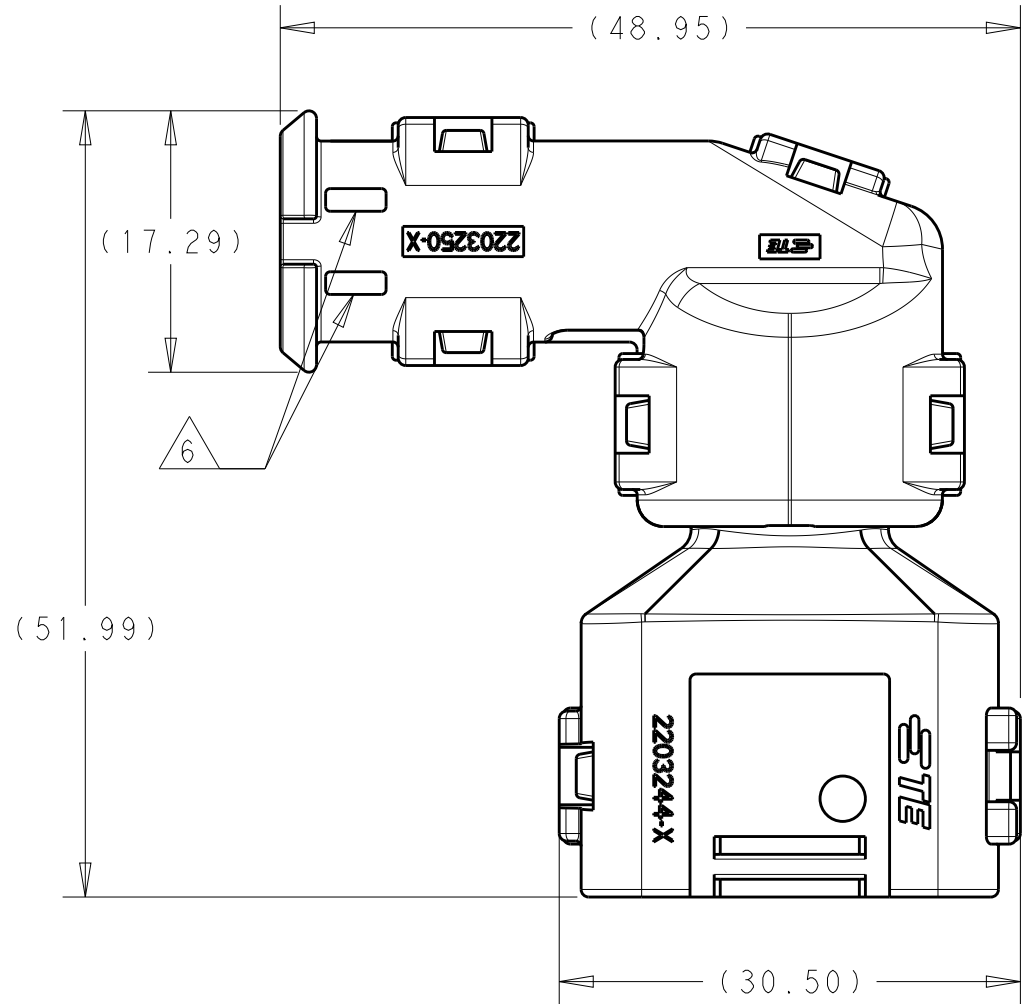
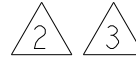
2302491-2
EXPLODED ISOMETRIC VIEW SHOWN



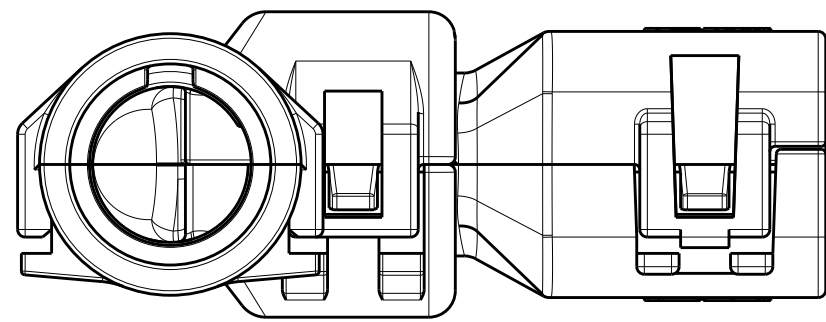
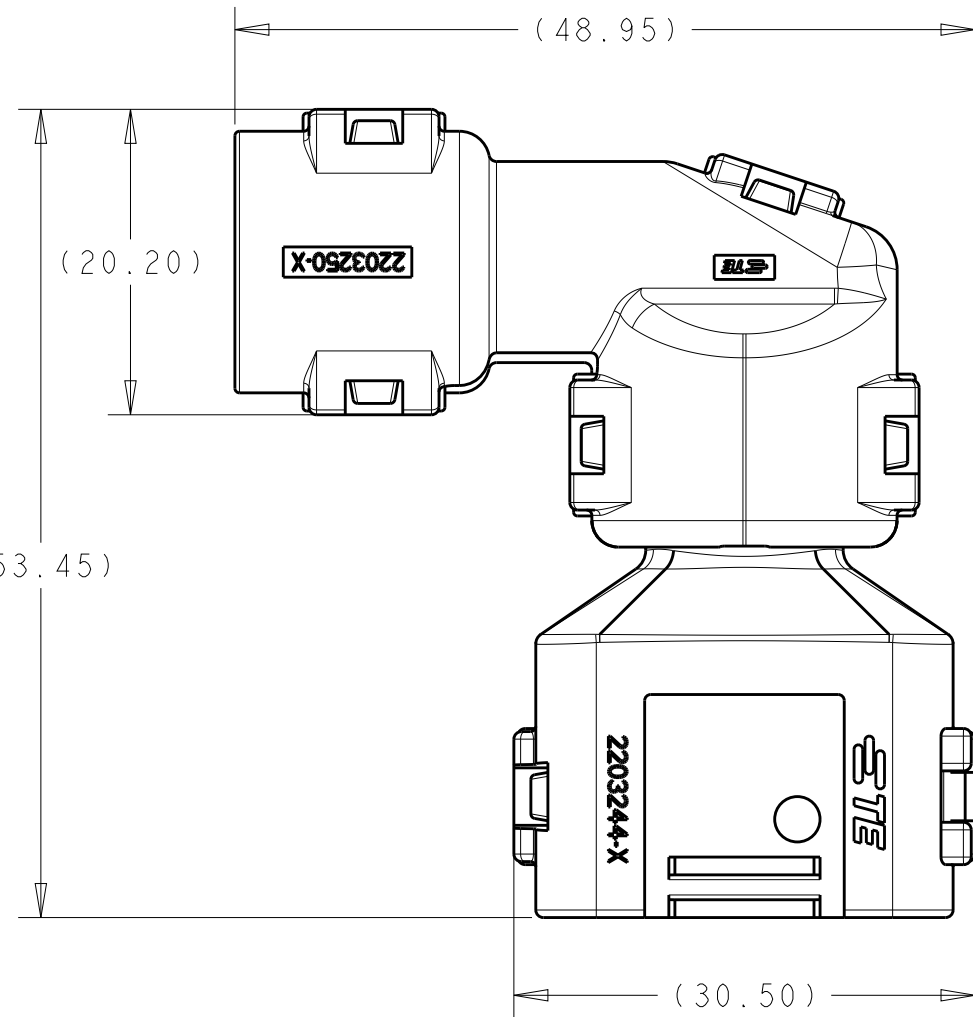
2302491-3
ASSEMBLED ISOMETRIC VIEW SHOWN



2302491-3
EXPLODED ISOMETRIC VIEW SHOWN



2302491-1
ASSEMBLED VIEW SHOWN
DIMENSIONS SHOWN TYPICAL FOR 2302491-1 AND -3



2302491-2
ASSEMBLED VIEW SHOWN
DIMENSIONS SHOWN FOR 2302491-2 ONLY



- 1 MATERIAL: NYLON MOLDING COMPOUND, BLACK, PA66/6.
- 2 BACKSHELL DESIGNED SUCH THAT TWO HALVES ATTACH TO ONE ANOTHER AND CLAMP AROUND THE CONNECTOR COVER.
- 3 ELBOW DESIGNED SUCH THAT TWO HALVES ATTACH TO ONE ANOTHER AND CLAMP AROUND THE BACKSHELL COLLAR.
- 4 DIMENSIONS TO BE MEASURED WHEN ELBOWS AND BACKSHELLS ASSEMBLED.
- 5 PRODUCT WEIGHTS:
2302491-1: 9.70g ASSEMBLED
2302491-2: 10.35g ASSEMBLED
2302491-3: 9.80g ASSEMBLED
- 6 4mm WIDE SLOTS FOR TIE WRAP TO SECURE HARNESS WIRES (-1 ONLY).
- 7 HEAT SHRINK TUBING FEATURE (-1 AND -3 ONLY).
8. INSTRUCTION SHEET: 408-151043.
9. CONDUIT PROFILE: NORMAL ONLY.

REVISIONS					
P	LTR	DESCRIPTION	DATE	DWN	APVD
	A	RELEASED PER ECO-16-007279	12MAY2016	JM	RB
	A2	REV PER ECO-16-013256	08SEP2016	JM	RB

776429-X 776523-X	NC08	NW7.5	2302491-3
	NC12	NW10	2302491-2
	SMOOTH	SMOOTH	2302491-1
FITS ON PLUG ASSY	CORREGATE NC	CORREGATE NW	PART NUMBER
CONDUIT SIZE			

THIS DRAWING IS A CONTROLLED DOCUMENT.		DWN J MCNEAL 13APR2016	TE Connectivity	
DIMENSIONS:		CHK R BALTER 13APR2016		
mm	TOLERANCES UNLESS OTHERWISE SPECIFIED:	APVD R BALTER 13APR2016	NAME	
	0 PLC ±"	PRODUCT SPEC	BACKSHELL AND ELBOW KIT, 3 POSITION, PLUG ASSEMBLY, AMPSEAL 16	
	1 PLC ±"	108-151043		
	2 PLC ±"	APPLICATION SPEC	-	
MATERIAL	FINISH	WEIGHT	SIZE	CAGE CODE
-	-	5	A1	00779
-	-	CUSTOMER DRAWING	SCALE	2:1
		DRAWING NO	SHEET	1
		REV	OF	1
		REV	OF	1
		REV	OF	1