

10140609- AA B C D E G FF

AA	POSITION
02	2X10
04	2X20
06	2X30
08	2X40
10	2X50
12	2X60
14	2X70
16	2X80
18	2X90
20	2X100

NOTE 10

B	FOR PLUG, SEE DWG. NO.10140607			
COMBINATION OF MATED HEIGHT	Plug 1	Plug 2	Plug 3	Plug 4
Recep 1				
Recep 2				
Recep 3				
Recep 4				

G	DATE CODE
/	NOT PRINT DATE CODE
P	PRINT DATE CODE

E	PACKAGING
0	TUBE WITHOUT METAL CAP
2	T&R WITH METAL CAP
9	TUBE WITH METAL CAP
6	T&R WITHOUT METAL CAP (WITH KAPTON TAPE)

NOTE 10
NOTE 10

D	POLARIZATION PEG	HOLD DOWN
0	YES	NO
2	NO	NO

C	PLATING ON CONTACT AREA	FF
0	GOLD 0.2um MIN / TIN LEAD NICKEL UNDERPLATE OVERALL 1.27um MIN	NONE
1	GOLD FLASH OVER PALLADIUM-NICKEL 0.69um MIN / TIN LEAD NICKEL UNDERPLATE OVERALL 1.27um MIN	NONE
4	GOLD 0.2um MIN / TIN 2um MIN (LEAD FREE) NICKEL UNDERPLATE OVERALL 1.27um MIN	LF
5	GOLD 0.38um MIN / TIN 2um MIN (LEAD FREE) NICKEL UNDERPLATE OVERALL 1.27um MIN	LF
6	GOLD FLASH OVER PALLADIUM-NICKEL 0.69um MIN / PURE TIN 2um MIN (LEAD FREE) NICKEL UNDERPLATE OVERALL 1.27um MIN	LF
8	GOLD 0.05um MIN / TIN 2um MIN NICKEL UNDERPLATE OVERALL 1.27um MIN	

NOTE:

- MATERIAL:
HOUSING: G.F. LCP, UL94-V0
TERMINAL: NICKEL COPPER
- PLATING: AS SHOWN IN TABLE.
- SEE GS-12-547 FOR PRODUCT SPEC.
- PACKAGING OPTION 2: NOT ALL SIZES ARE AVAILABLE. CHECK WITH FACTORY.
- THIS PRODUCT MEETS THE EUROPEAN UNION DIRECTIVES AND OTHER COUNTRY REGULATIONS AS DESCRIBED IN GS-22-008.
- THE HOUSING WILL WITHSTAND EXPOSURE UP TO 260~ PEAK TEMPERATURE FOR 30 SECONDS IN A CONVECTION, INFRA-RED OR VAPOR PHASE REFLOW OVEN.
- PLATING OPTION "4" IS LEADFREE ALTERNATIVE FOR OPTION "0", AND OPTION "6" IS LEADFREE ALTERNATIVE FOR OPTION "1".
- 2X10 POSITION ONLY APPLY TO RECEPTACLE 4.
PACKAGING WITH METAL CAP DOES NOT APPLY TO 2X10 POSITION.

spec ref				dr	Eric Huang	2016/08/08	<div>projection</div> <div></div>	<div>MM</div> <div></div>	size	A3	scale	3:1					
tolerance std	TOLERANCES UNLESS OTHERWISE SPECIFIED			eng	Eric Huang	2016/08/10			ecn no	-							
				chr	-	-											
				appr	Tim Yao	2016/08/10					product family	-	rel level	Released			
<div>surface</div> <div></div> <div>ISO 1302</div>	linear	0.X	±0.20	<div>Amphenol</div> <div>FCi</div>	title	BERGSTAK 0.8MM			dwg no	10140609					rev	A	
		0.XX	±0.15														
		0.XXX	±0.10														
	angular	0°	±2°			www.fci.com	cat. no.	-		Product - Customer Drw			sheet 1 of 7				

A

B

C

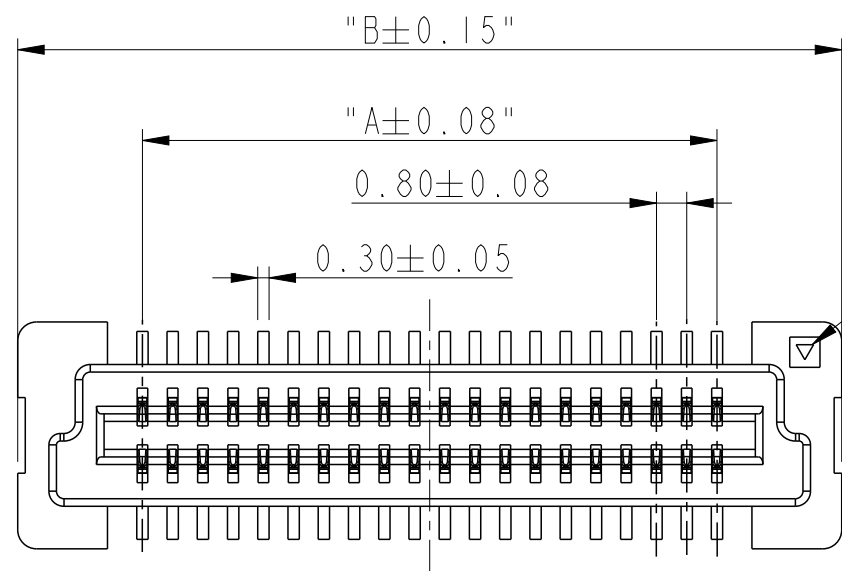
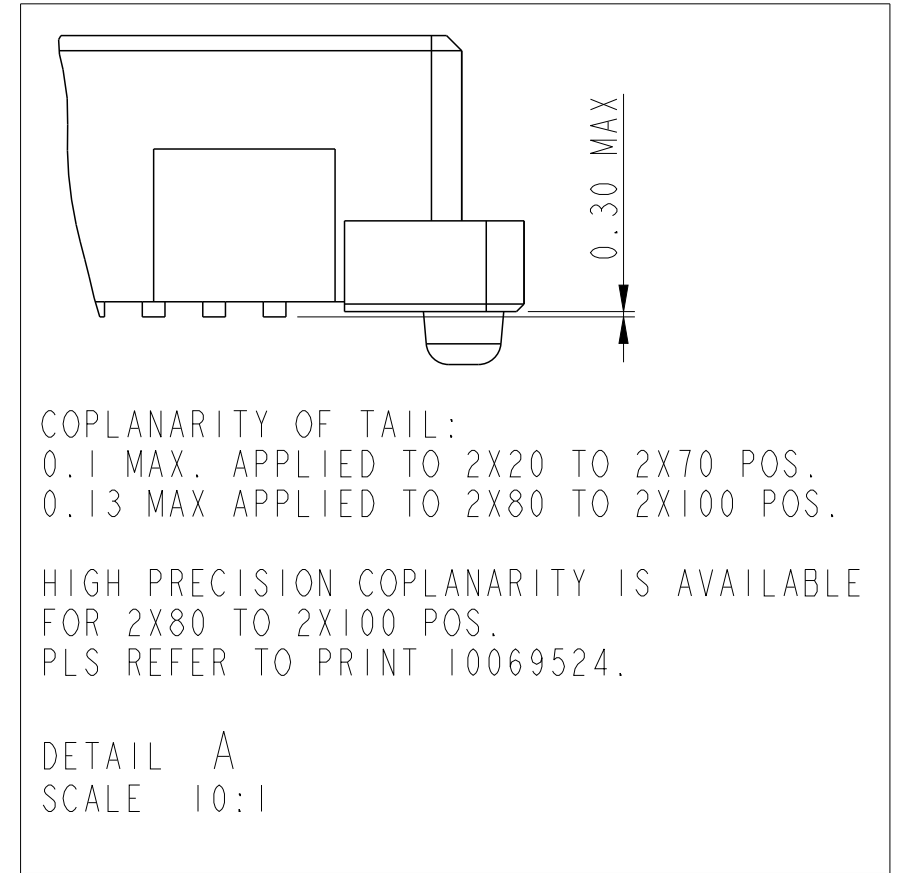
D

PRODUCT NO.	NUMBER OF POSITIONS	DIMENSION		
		A	B	C
10140609-041***	2X20	15.2	21.8	20.2
10140609-061***	2X30	23.2	29.8	28.2
10140609-081***	2X40	31.2	37.8	36.2
10140609-101***	2X50	39.2	45.8	44.2
10140609-121***	2X60	47.2	53.8	52.2
10140609-141***	2X70	55.2	61.8	60.2
10140609-161***	2X80	63.2	69.8	68.2
10140609-181***	2X90	71.2	77.8	76.2
10140609-201***	2X100	79.2	85.8	84.2

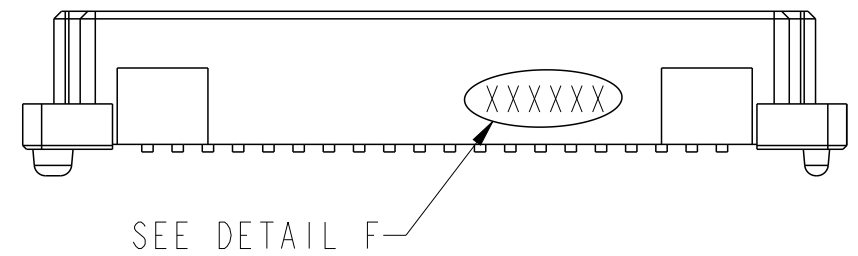
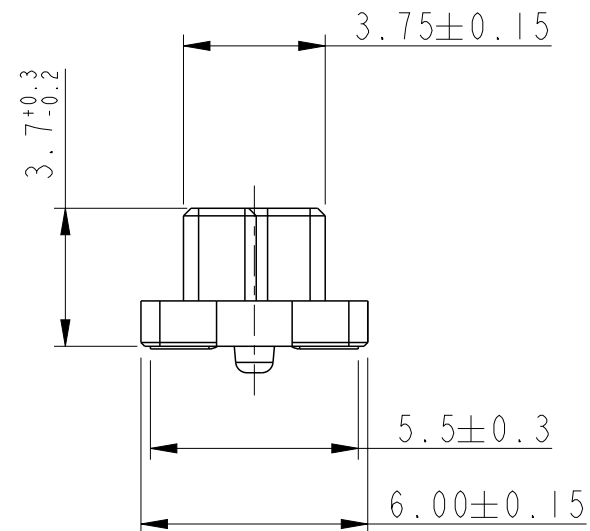
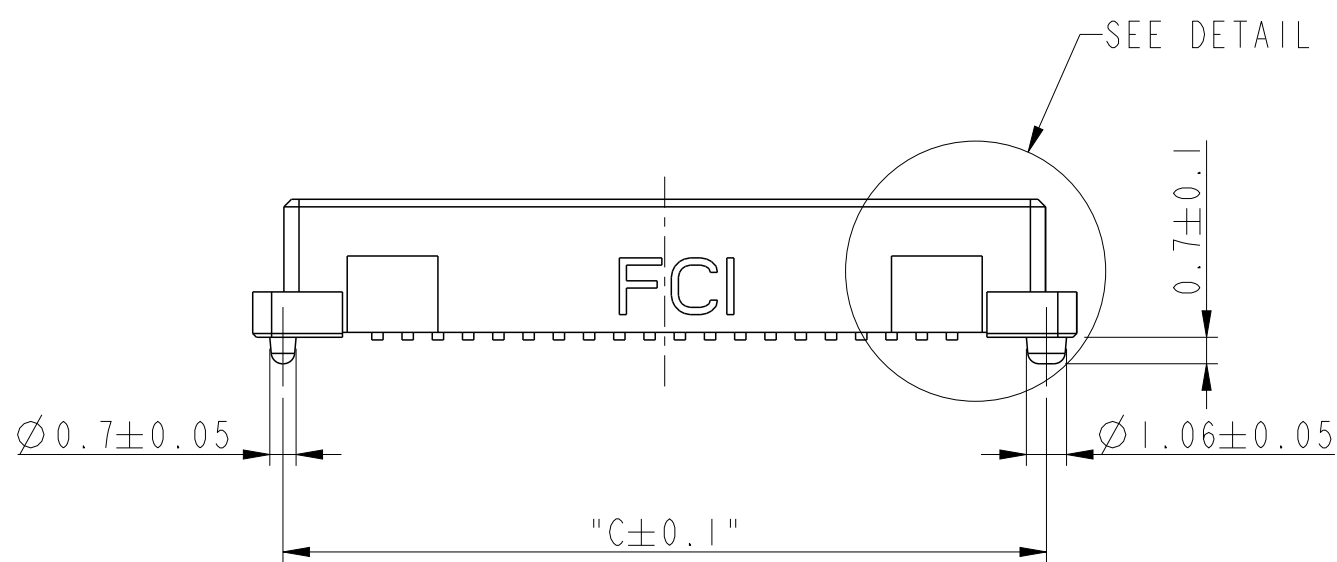
DATE CODE: XXXXXX

DAY(01~31)
MONTH(01~12)
YEAR(00~99)

DETAIL F



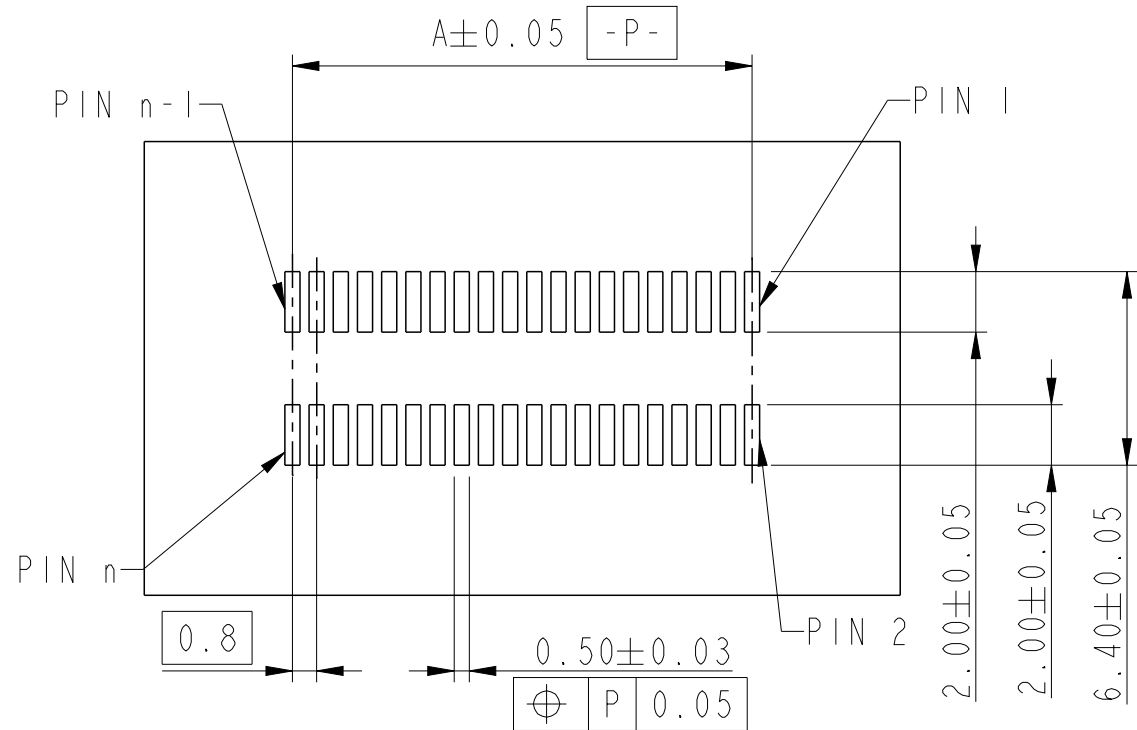
POSITION #1
INDICATOR



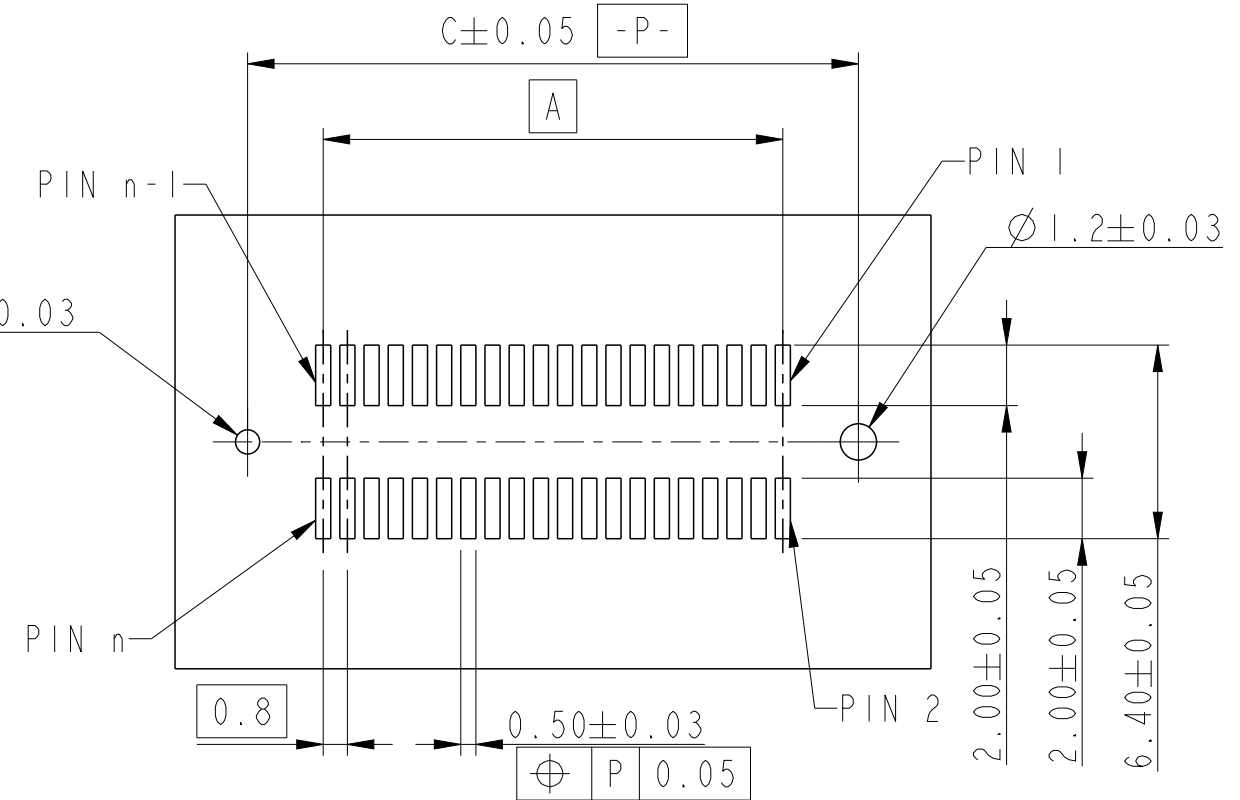
RECEPTACLE I

dr	Eric Huang	2016/08/08	<div>projection</div> <div></div>	<div>MM</div> <div></div>	size	A3	scale	3:1
eng	Eric Huang	2016/08/10			ecn no	-		
chr	-	-						
appr	Tim Yao	2016/08/10	product family			-	rel level	Released
<div>Amphenol FCI</div>		title			BERGSTAK 0.8MM			dwg no
		RECEPTACLE ASS'Y			10140609			
www.fci.com		cat. no.	-	Product - Customer Drw			sheet 2 of 7	
								rev
								A

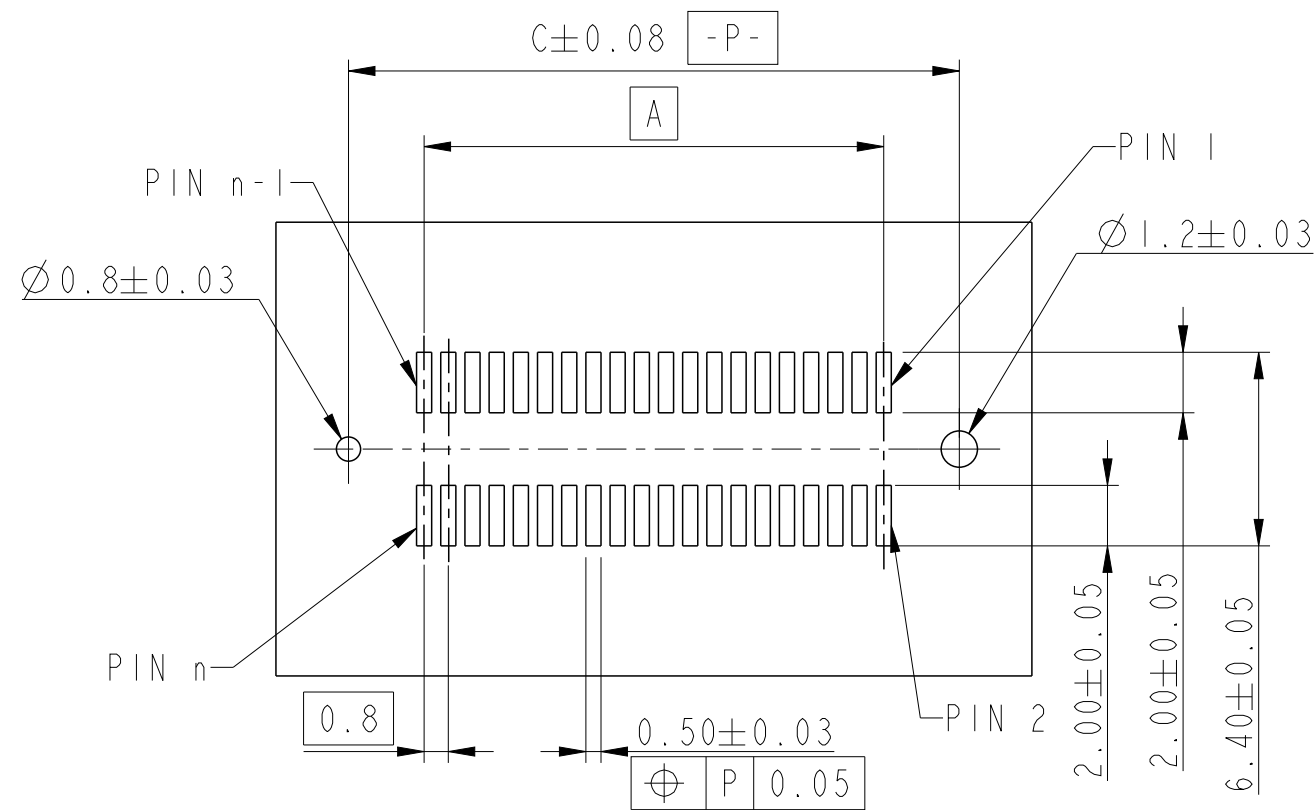
RECEPTACLE 1



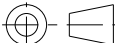

RECOMMENDED PCB LAYOUT WITHOUT PEGS AND HOLDDOWN



RECOMMENDED PCB LAYOUT WITH PEGS
FOR NO. OF POSITION 2X20, 2X30, 2X40, 2X50, 2X60



RECOMMENDED PCB LAYOUT WITH PEGS
FOR NO. OF POSITION 2X70, 2X80, 2X90, 2X100

dr	Eric Huang	2016/08/08	projection 	MM 	size	A3	scale	3:1				
eng	Eric Huang	2016/08/10			ecn no	-						
chr	-	-										
appr	Tim Yao	2016/08/10	product family			-	rel level		Released			
Amphenol FCI		title			BERGSTAK 0.8MM			dwg no		10140609	rev	A
www.fci.com		cat. no.			-			Product - Customer Drw			sheet 3 of 7	

A

B

C

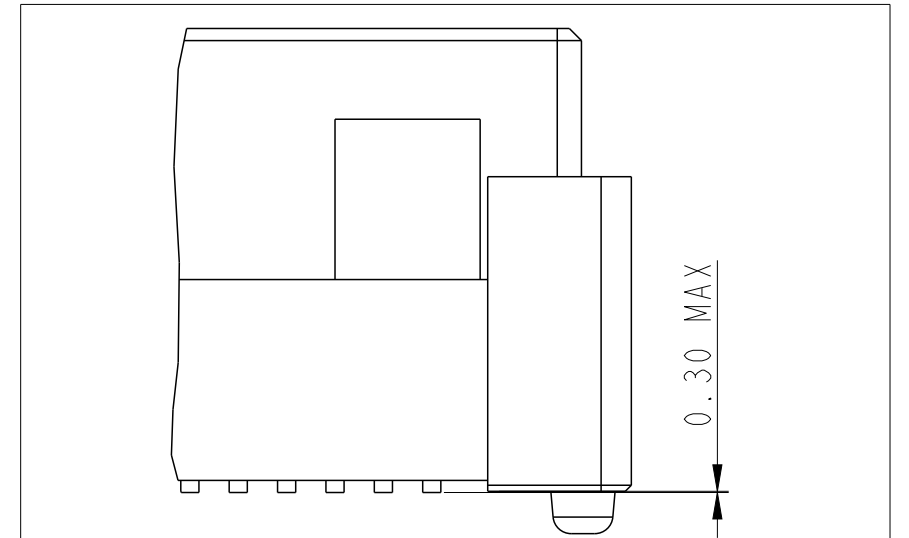
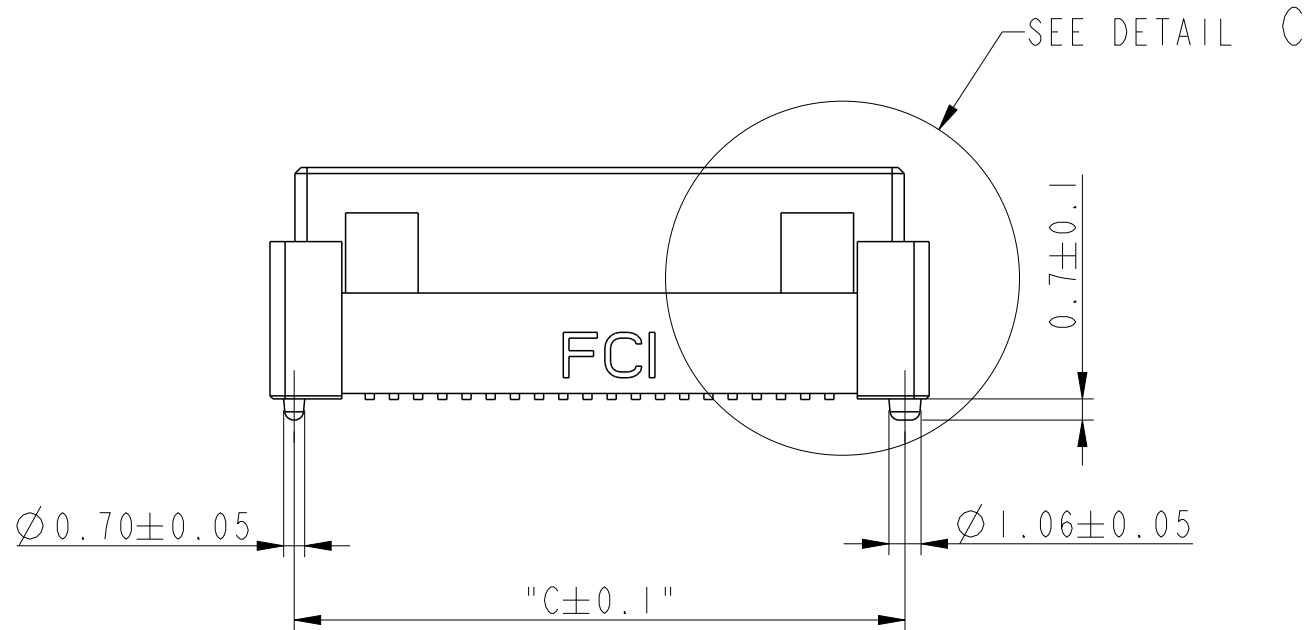
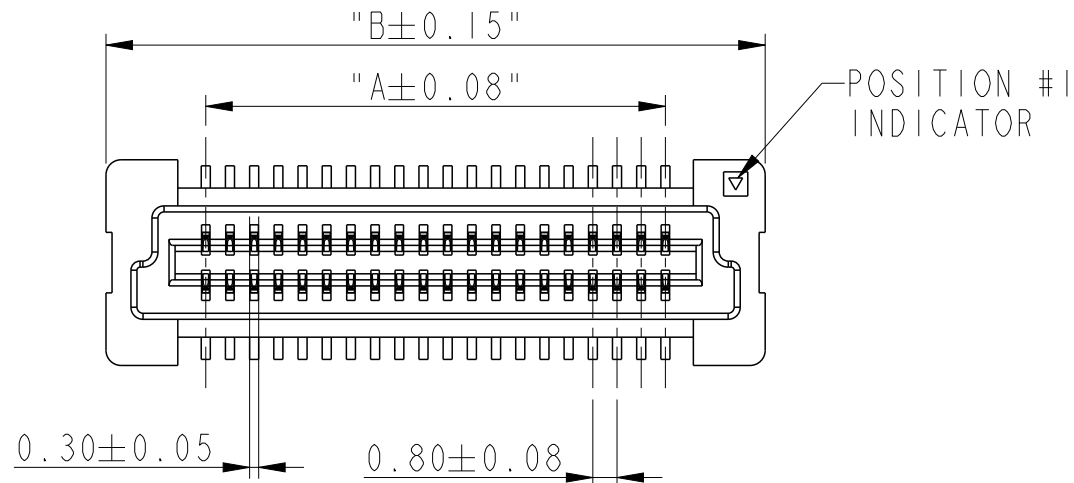
D

PRODUCT NO.	NUMBER OF POSITIONS	DIMENSION		
		A	B	C
10140609-042***	2X20	15.2	21.8	20.2
10140609-062***	2X30	23.2	29.8	28.2
10140609-082***	2X40	31.2	37.8	36.2
10140609-102***	2X50	39.2	45.8	44.2
10140609-122***	2X60	47.2	53.8	52.2
10140609-142***	2X70	55.2	61.8	60.2
10140609-162***	2X80	63.2	69.8	68.2
10140609-182***	2X90	71.2	77.8	76.2
10140609-202***	2X100	79.2	85.8	84.2

DATE CODE: XXXXXX

DAY(01~31)
MONTH(01~12)
YEAR(00~99)

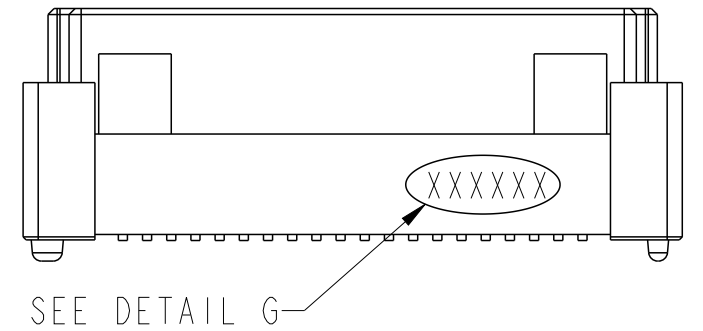
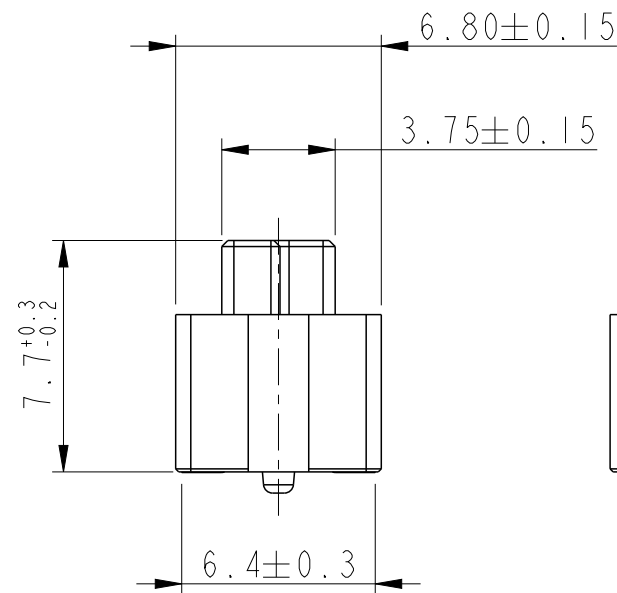
DETAIL G



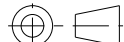

COPLANARITY OF TAIL
0.1 MAX APPLIED TO 2X20 TO 2X70 POS.
0.13 MAX APPLIED TO 2X80 TO 2X100 POS.

HIGH PRECISION COPLANARITY IS AVAILABLE
FOR 2X80 TO 2X100 POS.
PLS REFER TO PRINT 10069524.

DETAIL C
SCALE 8:1



RECEPTACLE 2

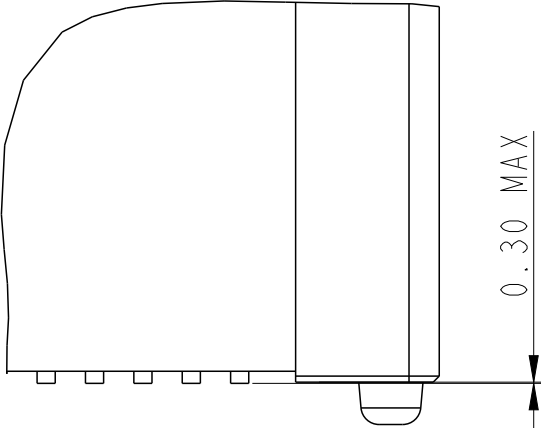
dr	Eric Huang	2016/08/08	projection 	MM 	size	A3	scale	3:1	
eng	Eric Huang	2016/08/10			ecm no	-			
chr	-	-							
appr		Tim Yao	2016/08/10		product family		-	rel level Released	
Amphenol FCI		title BERGSTAK 0.8MM RECEPTACLE ASS'Y			dwg no 10140609		rev A		
www.fci.com		cat. no.		-	Product - Customer Drw			sheet 4 of 7	

PRODUCT NO.	NUMBER OF POSITIONS	DIMENSION		
		A	B	C
10140609-043***	2X20	15.2	21.8	20.2
10140609-063***	2X30	23.2	29.8	28.2
10140609-083***	2X40	31.2	37.8	36.2
10140609-103***	2X50	39.2	45.8	44.2
10140609-123***	2X60	47.2	53.8	52.2
10140609-143***	2X70	55.2	61.8	60.2
10140609-163***	2X80	63.2	69.8	68.2
10140609-183***	2X90	71.2	77.8	76.2
10140609-203***	2X100	79.2	85.8	84.2

DATE CODE: XXXXXX

DAY(01~31)
MONTH(01~12)
YEAR(00~99)

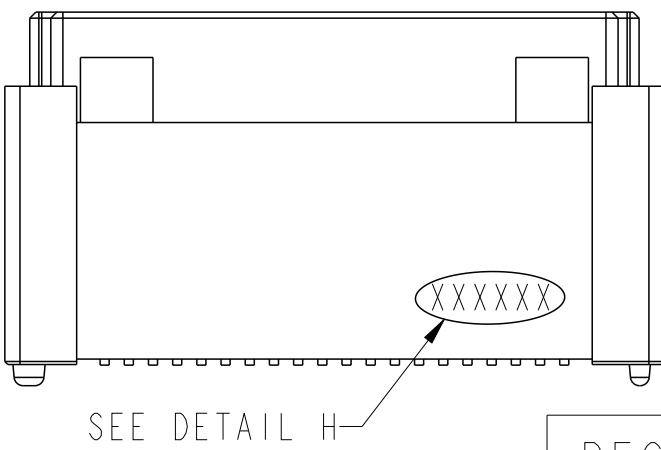
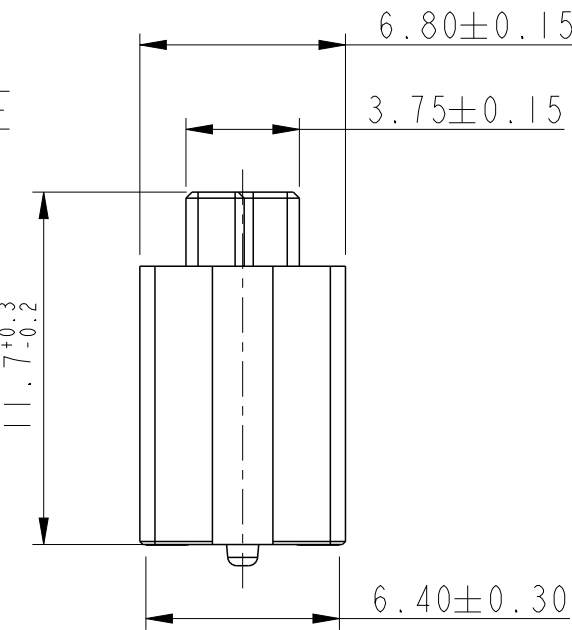
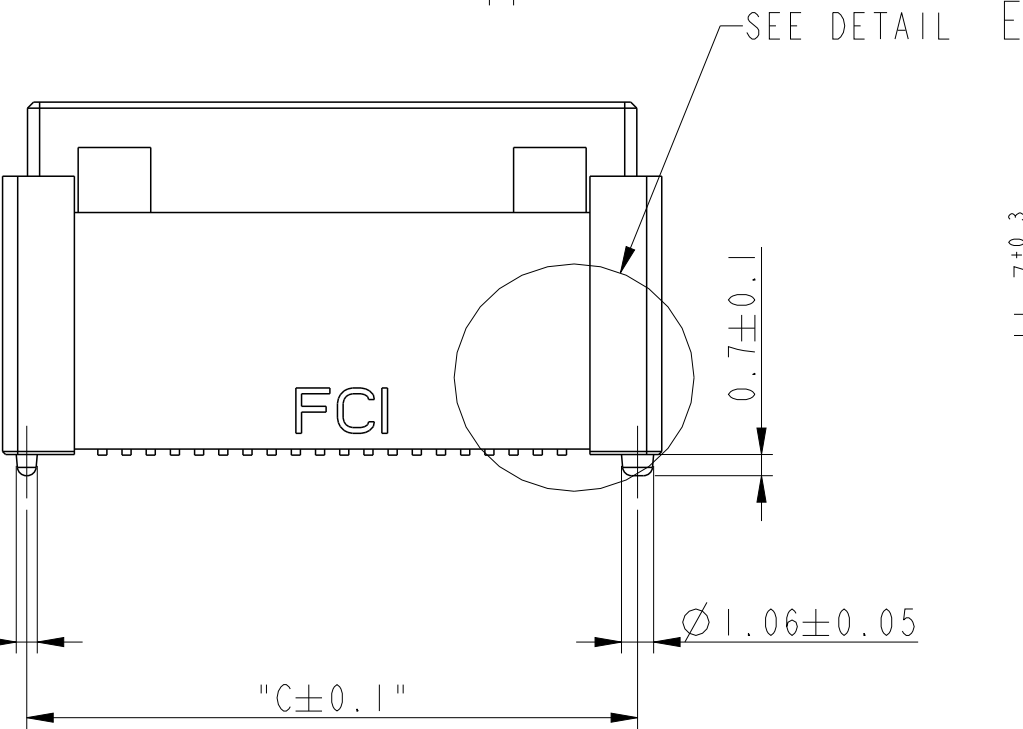
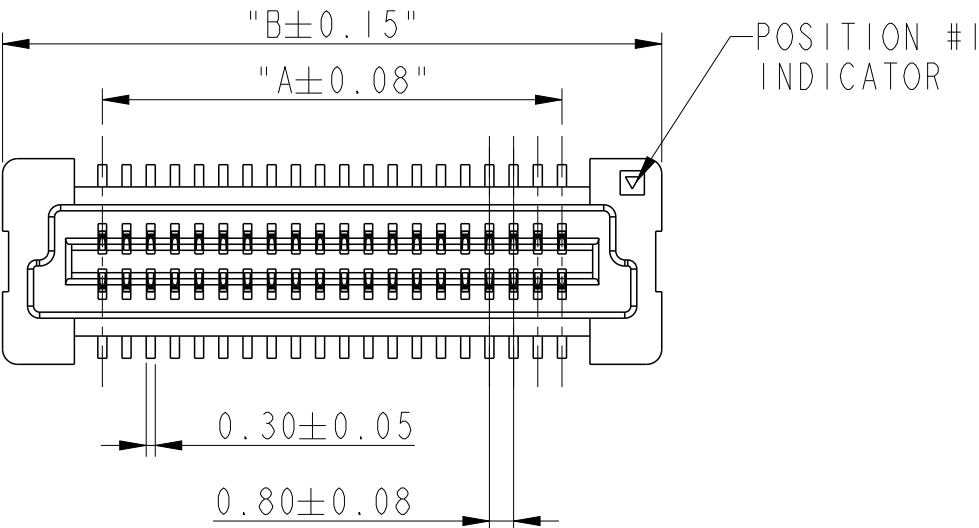
DETAIL H



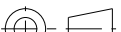

COPLANARITY OF TAIL
0.1 MAX APPLIED TO 2X20 TO 2X70 POS
0.13 MAX APPLIED TO 2X80 TO 2X100 POS.

HIGH PRECISION COPLANARITY IS AVAILABLE
FOR 2X80 TO 2X100 POS.
PLS REFER TO PRINT 10069524.

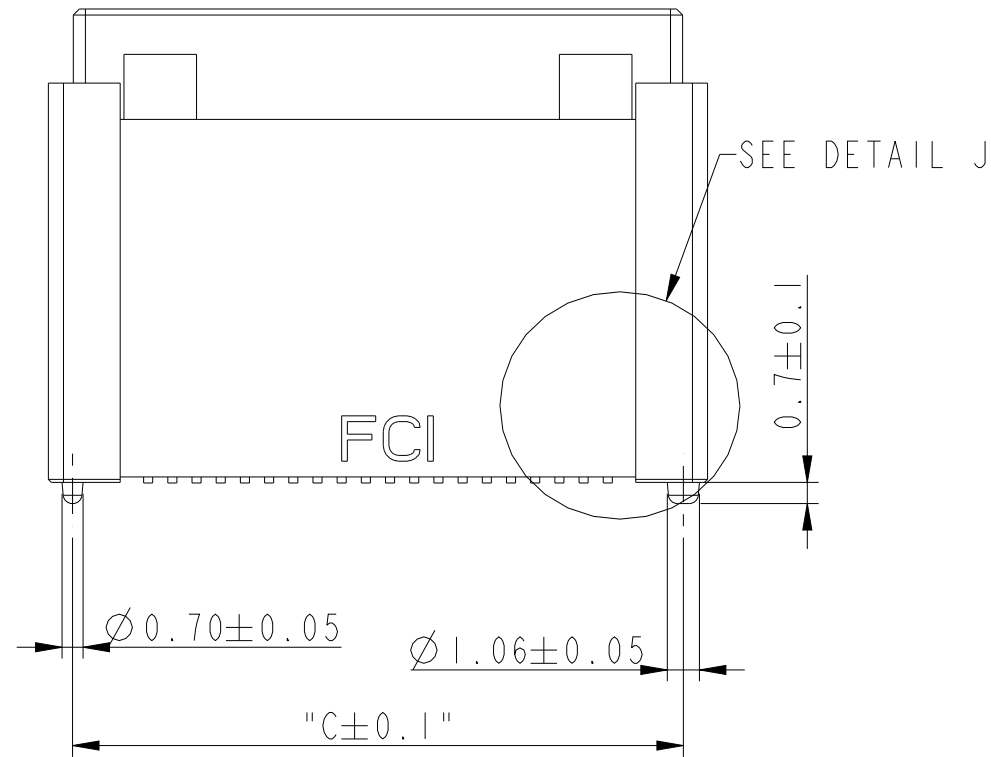
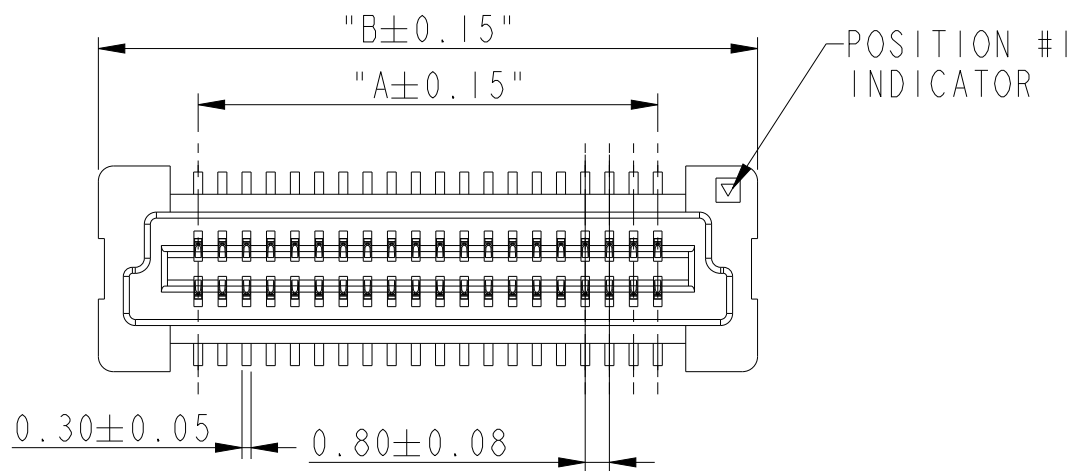
DETAIL E
SCALE 8:1



RECEPTACLE 3

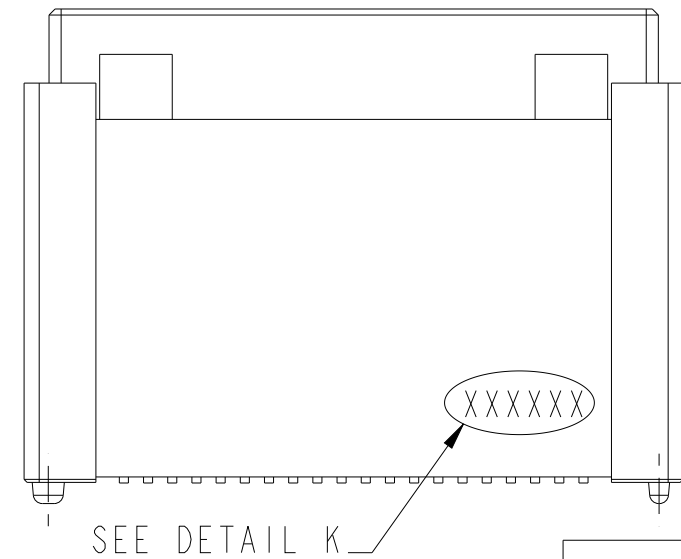
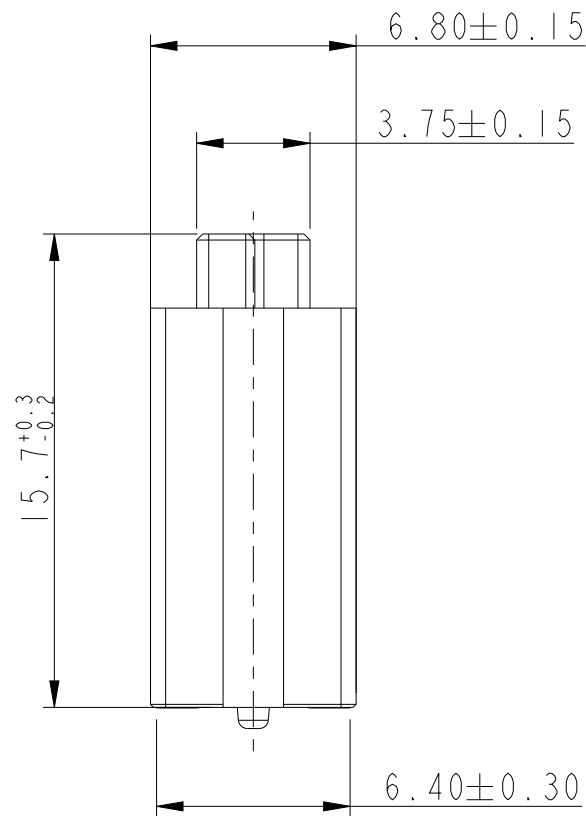
dr	Eric Huang	2016/08/08	<div>projection</div> <div></div>	<div>MM</div> <div></div>	size	A3	scale	3:1			
eng	Eric Huang	2016/08/10			ecn no	-					
chr	-	-			rel level	Released					
appr	Tim Yao	2016/08/10	product family	-							
Amphenol FCI		title			BERGSTAK 0.8MM		dwg no		10140609	rev	A
www.fci.com		cat. no.			-	Product - Customer Drw			sheet 5 of 7		

PRODUCT NO.	NUMBER OF POSITIONS	DIMENSION		
		A	B	C
10140609-024***	2X10	7.2	13.8	12.2
10140609-044***	2X20	15.2	21.8	20.2
10140609-064***	2X30	23.2	29.8	28.2
10140609-084***	2X40	31.2	37.8	36.2
10140609-104***	2X50	39.2	45.8	44.2
10140609-124***	2X60	47.2	53.8	52.2
10140609-144***	2X70	55.2	61.8	60.2
10140609-164***	2X80	63.2	69.8	68.2
10140609-184***	2X90	71.2	77.8	76.2
10140609-204***	2X100	79.2	85.8	84.2



DATE CODE: XXXXXX
DAY(01~31)
MONTH(01~12)
YEAR(00~99)

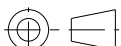

DETAIL K



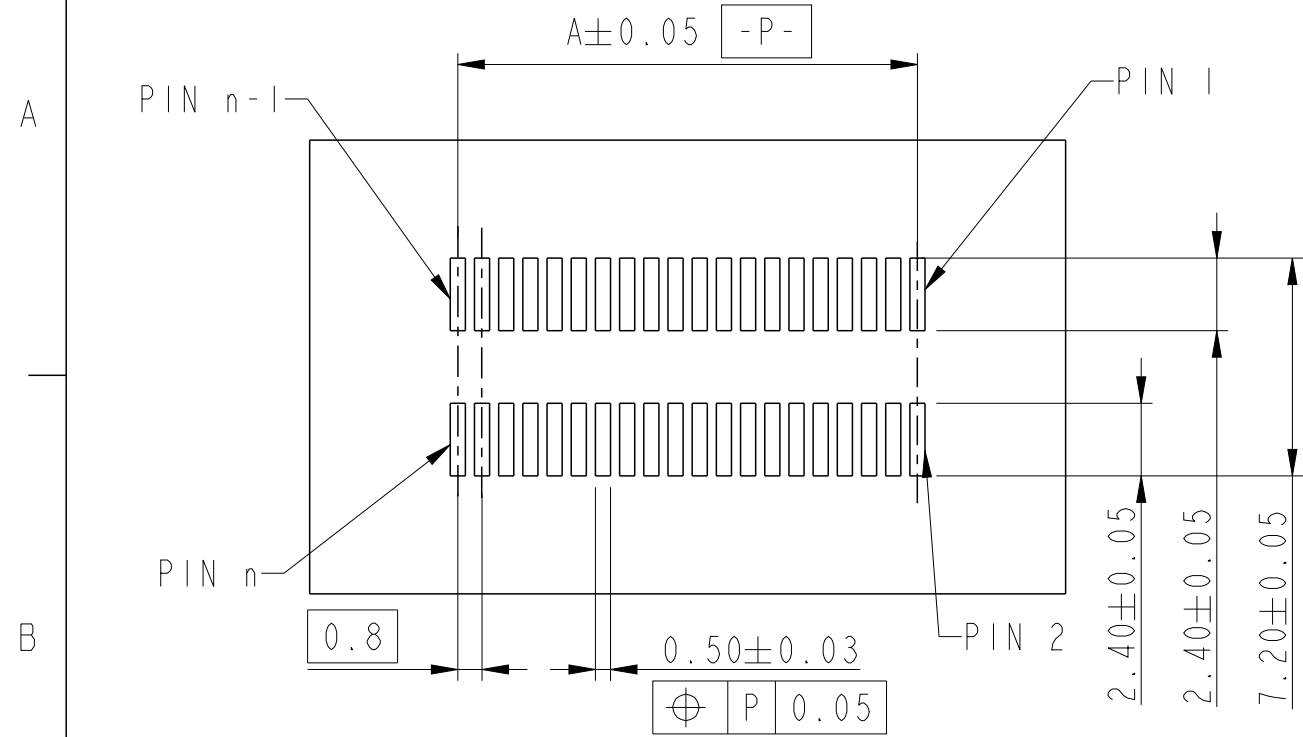
COPLANARITY OF TAIL
0.1 MAX APPLIED TO 2X20 TO 2X70 POS
0.13 MAX APPLIED TO 2X80 TO 2X100 POS.
HIGH PRECISION COPLANARITY IS AVAILABLE
FOR 2X80 TO 2X100 POS.
PLS REFER TO PRINT 10069524.

DETAIL J
SCALE 8:1

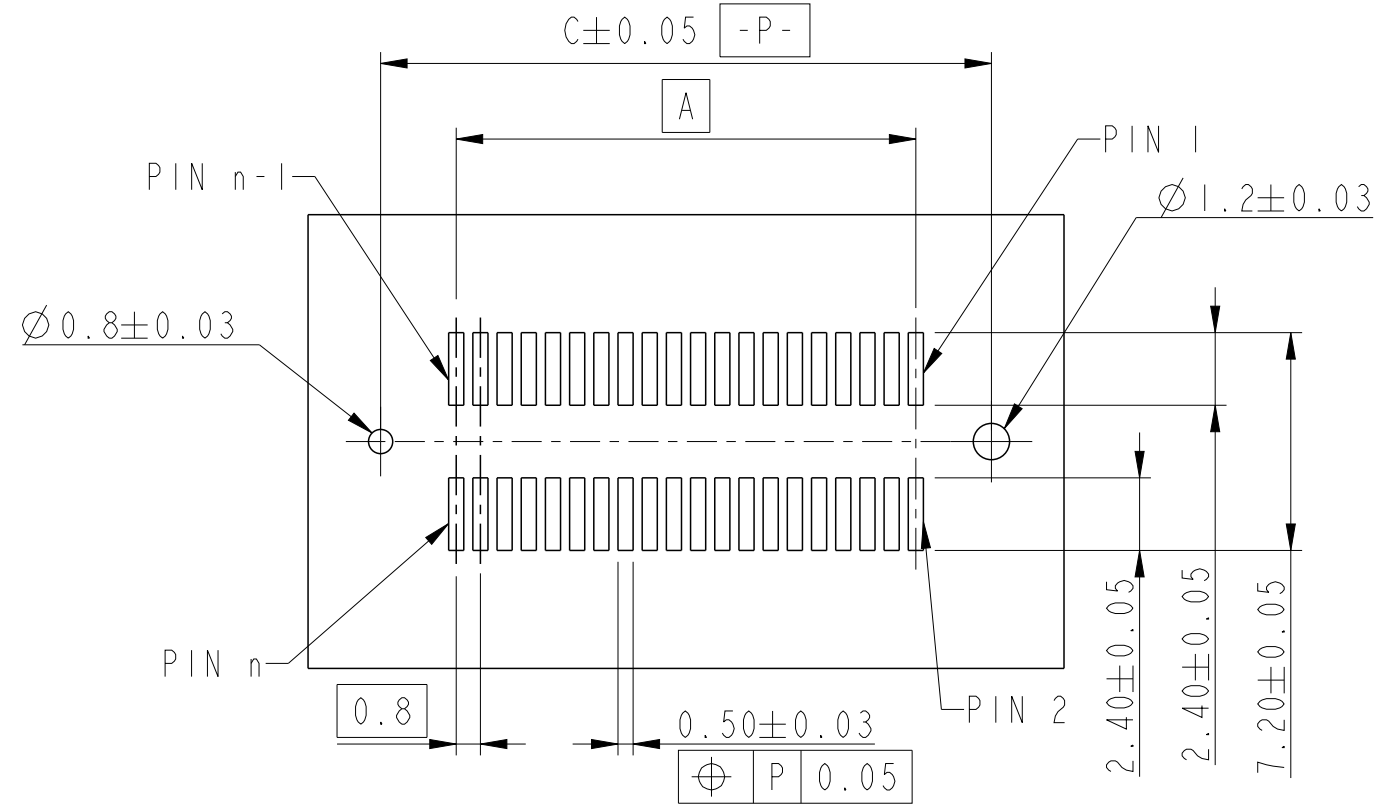
RECEPTACLE 4

dr	Eric Huang	2016/08/08	projection 	MM 	size	A3	scale	3:1				
eng	Eric Huang	2016/08/10			ecn no	-						
chr	-	-										
appr			Tim Yao		2016/08/10	product family		-	rel level	Released		
Amphenol FCI		title			BERGSTAK 0.8MM RECEPTACLE ASS'Y			dwg no		10140609	rev	A
www.fci.com		cat. no.		-	Product - Customer Drw					sheet 6 of 7		

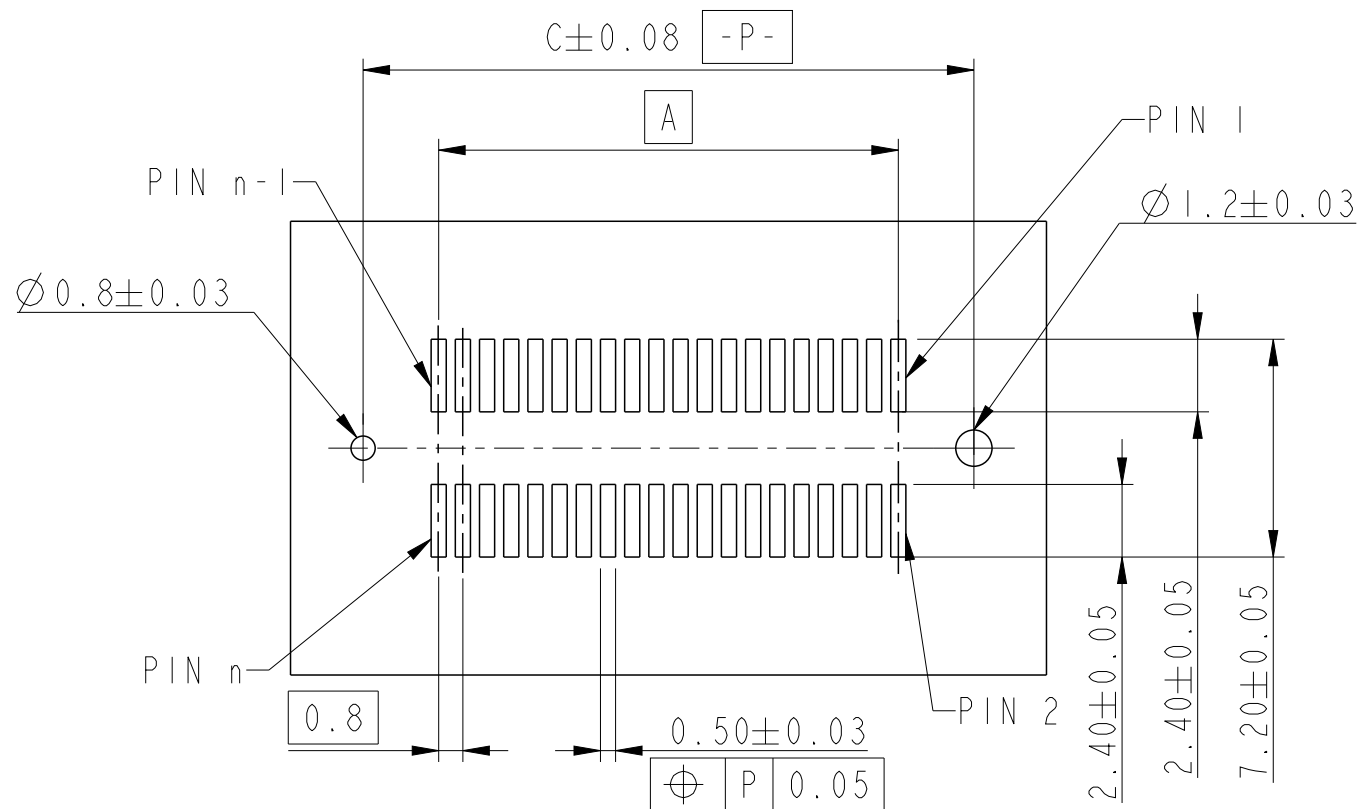
RECEPTACLE 2 & 3 & 4



RECOMMENDED PCB LAYOUT WITHOUT PEGS AND HOLDDOWN



RECOMMENDED PCB LAYOUT WITH PEGS
FOR NO. OF POSITION 2X20, 2X30, 2X40, 2X50, 2X60



RECOMMENDED PCB LAYOUT WITH PEGS
FOR NO. OF POSITION 2X70, 2X80, 2X90, 2X100

dr	Eric Huang	2016/08/08	<div>projection</div> <div></div>	<div>MM</div> <div></div>	size	A3	scale	3:1	
eng	Eric Huang	2016/08/10			ecn no	-			
chr	-	-							
appr	Tim Yao	2016/08/10	product family		-	rel level Released			
<div>Amphenol FCI</div>		title			BERGSTAK 0.8MM		dwg no		rev
		RECEPTACLE ASS'Y			10140609		A		
www.fci.com		cat. no.		-		Product - Customer Drw		sheet 7 of 7	