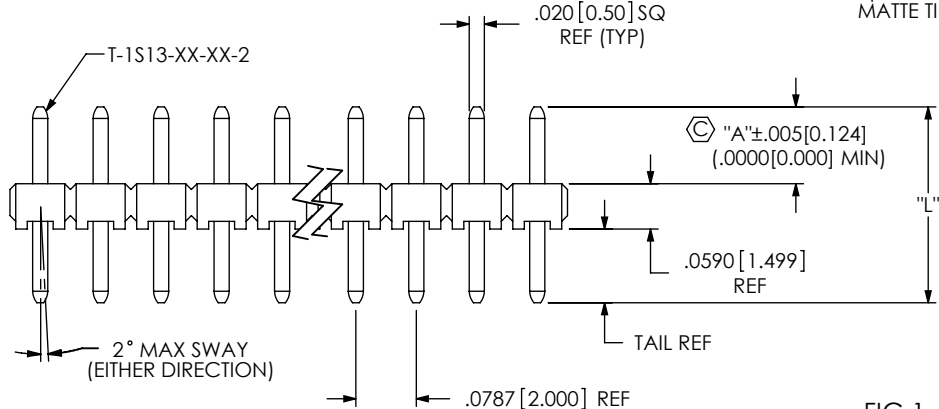
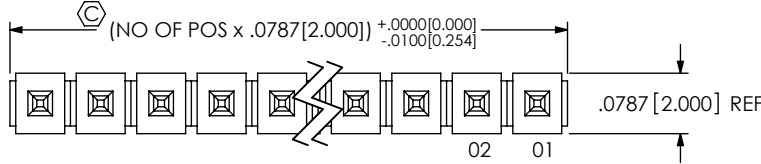


REVISION AE

NOTES:

1. C REPRESENTS A CRITICAL DIMENSION.
2. MAXIMUM ALLOWABLE BOW: 0.005[.13] IN/IN AFTER ASSEMBLY.
3. MAXIMUM PIN ROTATION IN BODY: 2°
4. MINIMUM PUSHOUT FORCE: 1LB
5. CUT PARTS WITH METAL WASHERS TOWARDS OPERATOR ALLOWING FLASH TO BE ON POST AWAY FROM CRITICAL AREA (METAL WASHERS).
6. INSERT PINS SO THAT BANDOLIER MARKS ARE LIMITED IN THE POST AREA (SEE TABLE 3).

DO NOT
SCALE FROM
THIS PRINT



** -MW OPTION, DO NOT DESIGN IN. SAMTEC WILL ONLY SUPPORT EXISTING BUSINESS 02/08/2002

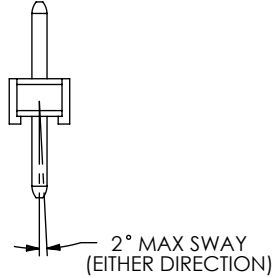


FIG 1
-S: SINGLE ROW OPTION
MTMM-1XX-02-XX-S-100 SHOWN

TABLE 1			
LEAD STYLE	"A" MAX	PIN LENGTH "L"	TERMINAL
-02	0.196 [4.98]	0.255 [6.48]	T-1S13-04-XX-2
-03	0.243 [6.17]	0.302 [7.67]	T-1S13-07-XX-2
-04	0.264 [6.71]	0.323 [8.20]	T-1S13-20-XX-2
-05	0.318 [8.08]	0.377 [9.58]	T-1S13-02-XX-2
-06	0.338 [8.59]	0.397 [10.08]	T-1S13-05-XX-2
-07	0.397 [10.08]	0.456 [11.58]	T-1S13-13-XX-2
-08	0.417 [10.59]	0.476 [12.09]	T-1S13-08-XX-2
-09	0.476 [12.09]	0.535 [13.59]	T-1S13-03-XX-2
-10	0.496 [12.60]	0.555 [14.10]	T-1S13-06-XX-2
-11	0.535 [13.59]	0.594 [15.09]	T-1S13-09-XX-2
-12	0.555 [14.10]	0.614 [15.60]	T-1S13-14-XX-2
-13	0.614 [15.60]	0.673 [17.09]	T-1S13-10-XX-2
-14	0.692 [17.58]	0.751 [19.08]	T-1S13-11-XX-2
-15	0.771 [19.58]	0.830 [21.08]	T-1S13-12-XX-2

"A" MAX = "L" -.059[1.50] (BODY) TAIL CAN BE .000

MTMM-1XX-XX-XX-X-XXX-XX-XXX

- NO OF POSITIONS
-01 THRU -50
- TERMINAL SPEC
LEAD STYLE (SEE TABLE 1)
- PLATING SPECIFICATION
 - G: 20μ" SELECTIVE GOLD IN CONTACT AREA, 3μ" SELECTIVE GOLD ON TAIL.
 - T: MATTE TIN ON CONTACT AND TAIL.
 - S: 30μ" SELECTIVE GOLD IN CONTACT AREA, MATTE TIN ON TAIL.
 - L: 15μ" SELECTIVE GOLD IN CONTACT AREA, MATTE TIN ON TAIL.
 - F: 3μ" SELECTIVE GOLD IN CONTACT AREA, MATTE TIN ON TAIL.
 - H: 30μ" SELECTIVE GOLD IN CONTACT AREA, 3μ" SELECTIVE GOLD ON TAIL.
 - SM: 30μ" SELECTIVE GOLD IN CONTACT AREA, MATTE TIN ON TAIL.
 - TM: MATTE TIN ON CONTACT AND TAIL.
 - LM: 15μ" SELECTIVE GOLD IN CONTACT AREA, MATTE TIN ON TAIL.
 - FM: 3μ" SELECTIVE GOLD IN CONTACT AREA, MATTE TIN ON TAIL.
- OPTION
 - POLARIZATION
SPECIFY POS -XXX TO BE OMITTED
 - OPTION
 - ** -MW: METAL WASHER (-D & -Q BODY SPECS ONLY) (SEE FIG 4, SHT 2) (30 POS PER ROW MAX) TAIL MUST BE .090[2.29] - .300[7.62]
 - POST HEIGHT
XXX = "A" (SEE TABLE 1)
 - BODY SPECIFICATION
 - S: SINGLE (TMM-50-S, SEE FIG 1)
 - D: DOUBLE (TMM-50-D, SEE FIG 2, SHT 2)
 - Q: QUAD (TMM-50-Q, SEE FIG 3, SHT 2)

UNLESS OTHERWISE SPECIFIED, DIMENSIONS ARE IN INCHES. TOLERANCES ARE: DECIMALS ANGLES .XX: ±.01 [0.3] 2° .XXX: ±.005 [0.13] .XXXX: ±.0020 [0.051]	PROPRIETARY NOTE THIS DOCUMENT CONTAINS INFORMATION CONFIDENTIAL AND PROPRIETARY TO SAMTEC, INC. AND SHALL NOT BE REPRODUCED OR TRANSFERRED TO OTHER DOCUMENTS OR DISCLOSED TO OTHERS OR USED FOR ANY PURPOSE OTHER THAN THAT WHICH IT WAS OBTAINED WITHOUT THE EXPRESSED WRITTEN CONSENT OF SAMTEC, INC.	<div data-bbox="1669 1318 1984 1404" data-label="Image"> </div> <div data-bbox="1669 1404 1984 1458"> 520 PARK EAST BLVD, NEW ALBANY, IN 47150 PHONE: 812-944-6733 FAX: 812-948-5047 e-Mail: info@SAMTEC.com code 55322 </div> <div data-bbox="1585 1461 2068 1599"> DESCRIPTION: 2MM TERMINAL STRIP ASSEMBLY DWG. NO. MTMM-1XX-XX-XX-X-XXX-XX-XXX BY: REIDINGER 12/01/1993 SHEET 1 OF 2 </div>
MATERIAL: DO NOT SCALE DRAWING INSULATOR: LCP, UL 94 VO, COLOR: BLACK TERMINAL: PHOS BRONZE	SHEET SCALE: 4:1	

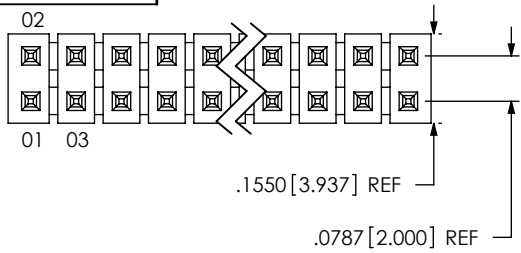


FIG 2

-D: DOUBLE ROW OPTION
MTMM-1XX-02-XX-D-100 SHOWN
(SAME AS FIG 1, DIFFERENT AS SHOWN)

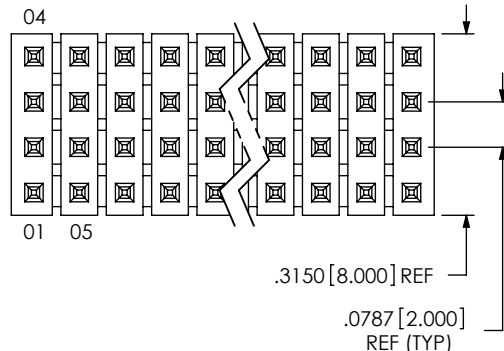


FIG 3

-Q: QUAD ROW OPTION
MTMM-1XX-02-XX-Q-100 SHOWN
(SAME AS FIG 1, DIFFERENT AS SHOWN)

PACKAGING TABLE 2 FOR -MW OPTION ONLY			
BODY SPECIFICATION	LEAD STYLE	PKG TUBE	TUBE PLUG
-D	-02, -03, -04, -05, -06	PT-1-24-02-17	TP-09
	-07, -08, -09, -10,	PT-1-24-03-75	TP-03
	-11, -12, -13, -14	PT-1-24-02-48	TP-03
	-15	PT-1-24-02-47	TP-03
-Q	-02, -03, -04, -05, -06	PT-1-24-02-17	TP-09
	07, -08, -09	PT-1-24-01-40	TP-24
	-10, -11	PT-1-24-02-29	TP-24
	-12, -13, -14, -15	PT-1-24-02-51	TP-07

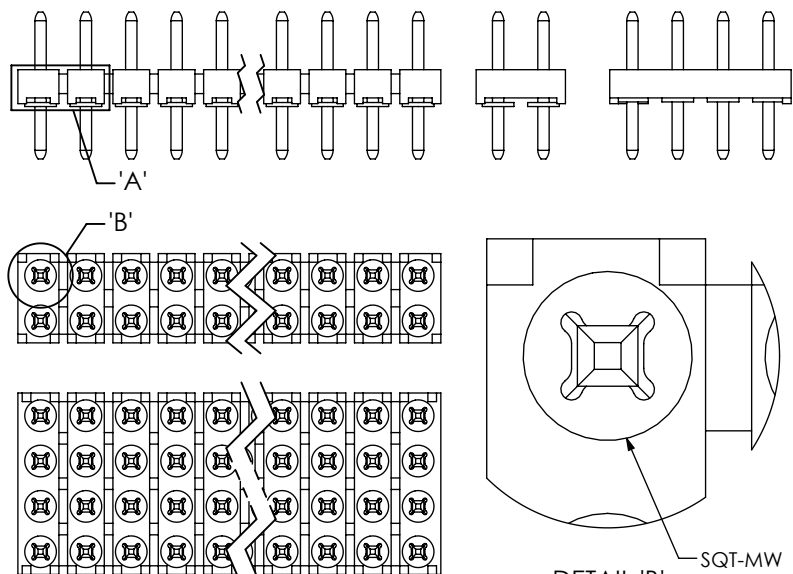


FIG 4

-MW: METAL WASHER OPTION
MTMM-1XX-02-XX-X-100-MW SHOWN
(ONE PER POSITION)
(-D & -Q BODY SPEC ONLY, SEE NOTE 5)
(SAME AS FIG 1, DIFFERENT AS SHOWN)

** -MW OPTION, DO NOT DESIGN IN. SAMTEC WILL ONLY SUPPORT EXISTING BUSINESS 02/08/2002



.0590^{+.0080}_{-.0050} [1.499^{+0.203}_{-0.127}]

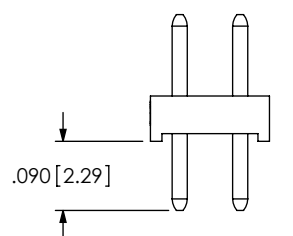
2° MAX SWAY
(EITHER DIRECTION)

.0050 [0.127] MAX
MEASURE AT TAIL

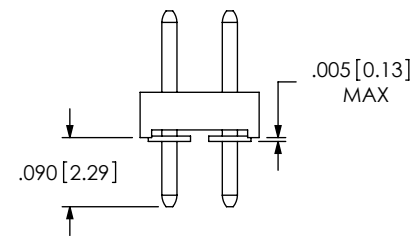
DETAIL 'A'
SCALE 8:1

DETAIL 'B'
SCALE 16:1

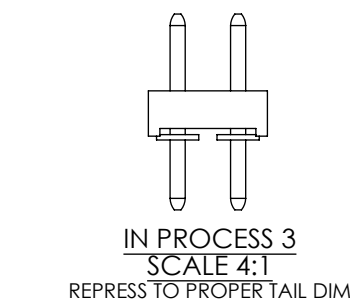
.0050 [0.127] MAX
MEASURE AT TAIL



IN PROCESS 1
SCALE 4:1



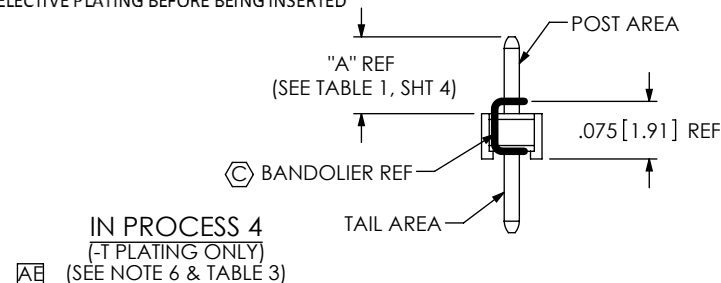
IN PROCESS 2
SCALE 4:1



IN PROCESS 3
SCALE 4:1
REPRESS TO PROPER TAIL DIM

TABLE 3 (-T PLATING ONLY)				
MAX NUMBER OF BAND MARKS ALLOWED IN THE POST AREA				
LEAD STYLE	PIN A	PIN B	PIN C	PIN D
-02	1	1	1	1
-03	2	2	2	2
-04	2	2	2	2
-05	2	2	2	2
-06	2	2	2	2
-07	2	2	2	2
-08	2	2	2	2
-09	2	2	2	2
-10	2	2	2	2
-11	2	2	2	2
-12	2	2	2	2
*-13	2	2	2	2
*-14	2	2	2	2
-15	2	2	2	2

* = PINS TO BE FLIPPED OPPOSITE OF
SELECTIVE PLATING BEFORE BEING INSERTED



PROPRIETARY NOTE

THIS DOCUMENT CONTAINS INFORMATION
CONFIDENTIAL AND PROPRIETARY TO
SAMTEC, INC. AND SHALL NOT BE REPRODUCED
OR TRANSFERRED TO OTHER DOCUMENTS OR
DISCLOSED TO OTHERS OR USED FOR ANY
PURPOSE OTHER THAN THAT WHICH IT WAS
OBTAINED WITHOUT THE EXPRESSED WRITTEN
CONSENT OF SAMTEC, INC.

DO NOT SCALE DRAWING

SHEET SCALE: 3:1

samtec

520 PARK EAST BLVD, NEW ALBANY, IN 47150
PHONE: 812-944-6733 FAX: 812-948-5047
e-Mail: info@SAMTEC.com code 55322

DESCRIPTION: 2MM TERMINAL STRIP ASSEMBLY

DWG. NO. MTMM-1XX-XX-XX-X-XXX-XX-XXX

BY: REIDINGER 12/01/1993 SHEET 2 OF 2