
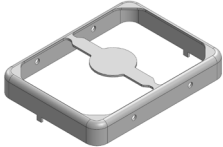
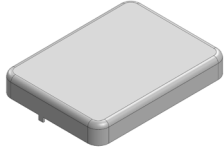


MS233-10*

DRAWN-SEAMLESS EMI/RFI SHIELD

*OPTIONAL SHIELD CONFIGURATIONS

		
2-PIECE SHIELD COVER	2-PIECE SHIELD FRAME	1-PIECE SHIELD

ITEM P/N	ITEM DESCRIPTION	MATERIAL
MS233-10C	2-PIECE EMI/RFI SHIELD COVER	TIN-PLATED STEEL
MS233-10F	2-PIECE EMI/RFI SHIELD FRAME	TIN-PLATED STEEL
MS233-10S	1-PIECE EMI/RFI SHIELD	TIN-PLATED STEEL
MS233-10C-NS	2-PIECE EMI/RFI SHIELD COVER	NICKEL-SILVER
MS233-10F-NS	2-PIECE EMI/RFI SHIELD FRAME	NICKEL-SILVER
MS233-10S-NS	1-PIECE EMI/RFI SHIELD	NICKEL-SILVER

TIN-PLATED STEEL: CRS ELECTROLYTIC TINPLATE

NICKEL-SILVER: UNS C77000 / UNS C73500



SHIELD CONFIGURATION:

MATERIAL:

© MASACH TECH LTD.
22 HAGANAN, MODIIN 7169513 ISRAEL
T: (+972) 8-9754681 / F: (+972) 8-9754682
info@masach.com / www.masach.com

SHIELD TYPE:

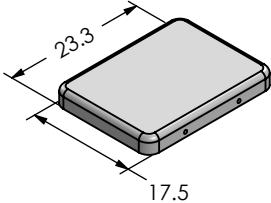
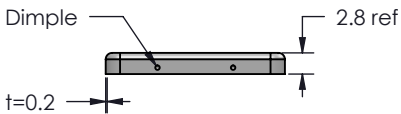
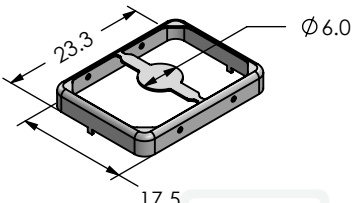
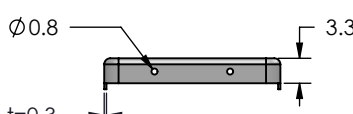
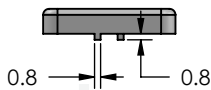
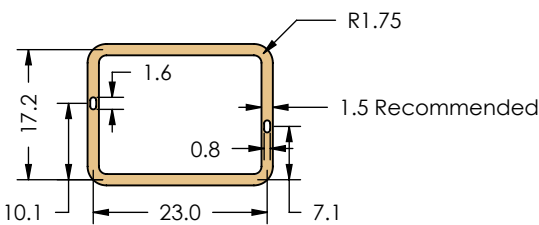





1 INCH 10 MM

MMGS / PRINT 1:1 / A4

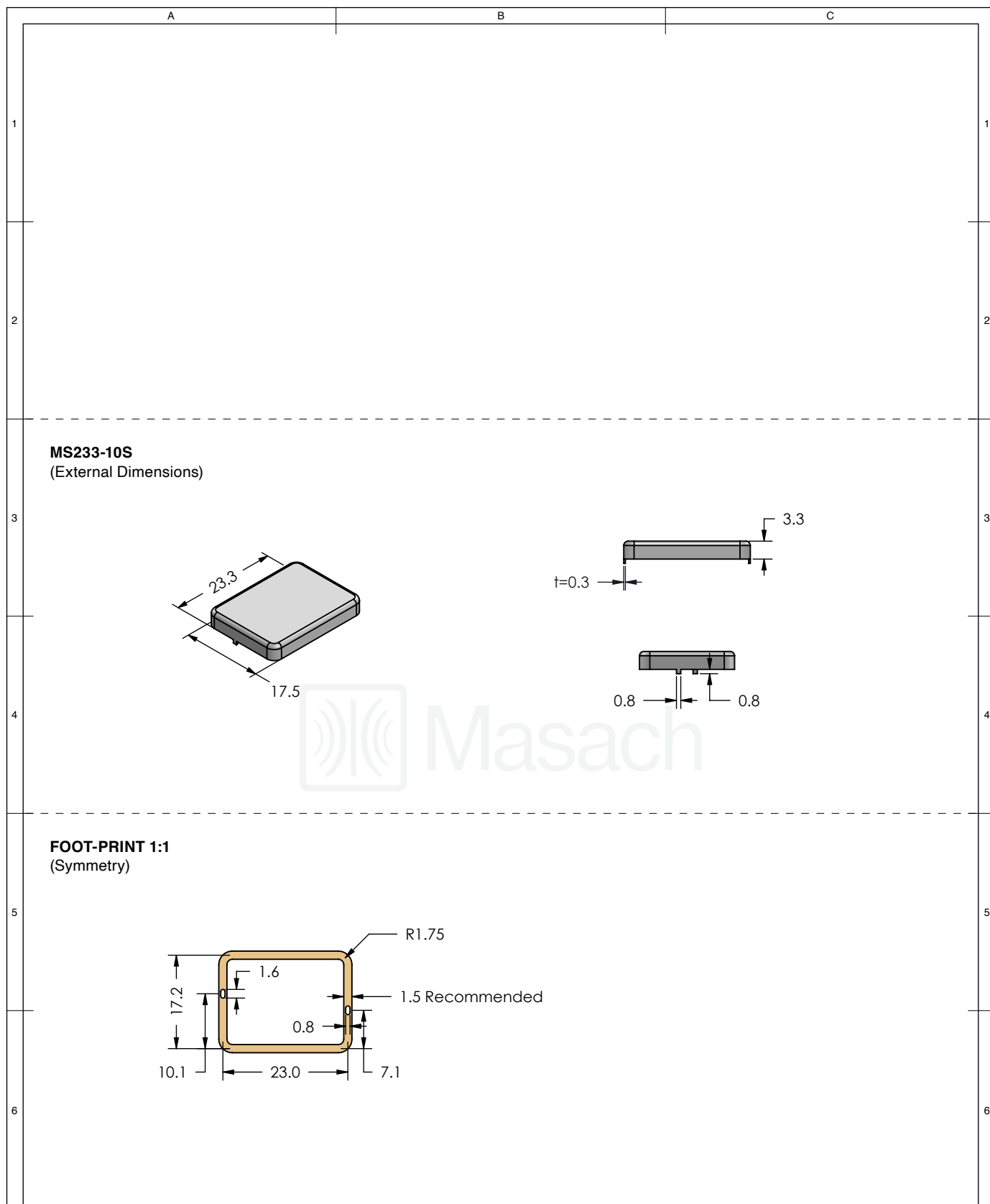
This product has been designed and manufactured by © Masach Tech Ltd. The use of this product in any type of electronic device or application is not under Masach Tech Ltd. liability.




[BACK TO TOP](#)

A		B	C
1	MS233-10C (Internal Dimensions)		
	 		
2			
3	MS233-10F (External Dimensions)		
	  		
4			
5	FOOT-PRINT 1:1 (Symmetry)		
			
6			

<div></div>	SHIELD CONFIGURATION:		MATERIAL:		
	2-PIECE EMI/RFI SHIELD		TIN-PLATED STEEL ⁽¹⁾		
	NOTE: (1) CRS ELECTROLYTIC TINPLATE (2) GENERAL TOLERANCE (+/-) 0.2MM				
© MASACH TECH LTD. 22 HAGANAN, MODIIN 7169513 ISRAEL T: (+972) 8-9754681 / F: (+972) 8-9754682 info@masach.com / www.masach.com	SHIELD TYPE:		<div></div>	<div><div></div><div>1 INCH</div><div></div></div> <div><div></div><div>10 MM</div><div></div></div>	
	DRAWN-SEAMLESS EMI/RFI SHIELD			MMGS / PRINT 1:1 / A4	

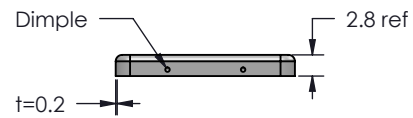
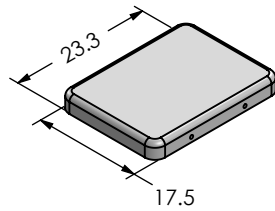
This product has been designed and manufactured by © Masach Tech Ltd. The use of this product in any type of electronic device or application is not under Masach Tech Ltd. liability.



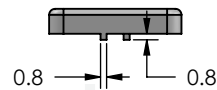
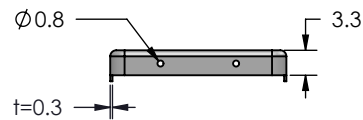
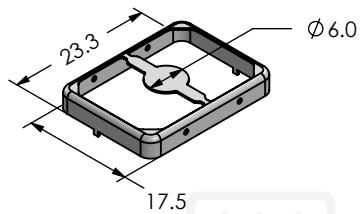
<div></div>	SHIELD CONFIGURATION:		MATERIAL:					
	1-PIECE EMI/RFI SHIELD		TIN-PLATED STEEL ⁽¹⁾					
	NOTE: (1) CRS ELECTROLYTIC TINPLATE (2) GENERAL TOLERANCE (+/-) 0.2MM							
<div>© MASACH TECH LTD. 22 HAGANAN, MODIIN 7169513 ISRAEL T: (+972) 8-9754681 / F: (+972) 8-9754682 info@masach.com / www.masach.com</div>	SHIELD TYPE:		<div><div></div><div></div></div>		<div><div></div><div>1 INCH</div><div></div></div>		<div><div></div><div>10 MM</div><div></div></div>	
	DRAWN-SEAMLESS EMI/RFI SHIELD				MMGS / PRINT 1:1 / A4			

This product has been designed and manufactured by © Masach Tech Ltd. The use of this product in any type of electronic device or application is not under Masach Tech Ltd. liability.

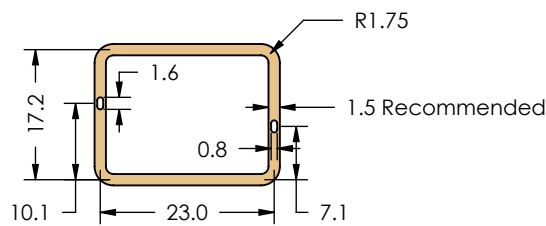
MS233-10C-NS
(Internal Dimensions)



MS233-10F-NS
(External Dimensions)



FOOT-PRINT 1:1
(Symmetry)



© MASACH TECH LTD.
22 HAGANAN, MODIIN 7169513 ISRAEL
T: (+972) 8-9754681 / F: (+972) 8-9754682
info@masach.com / www.masach.com

SHIELD CONFIGURATION:

2-PIECE EM/RFI SHIELD

MATERIAL:

NICKEL-SILVER ⁽¹⁾

NOTE: (1) UNS C77000 / UNS C73500 (2) GENERAL TOLERANCE (+/-) 0.2MM

SHIELD TYPE:

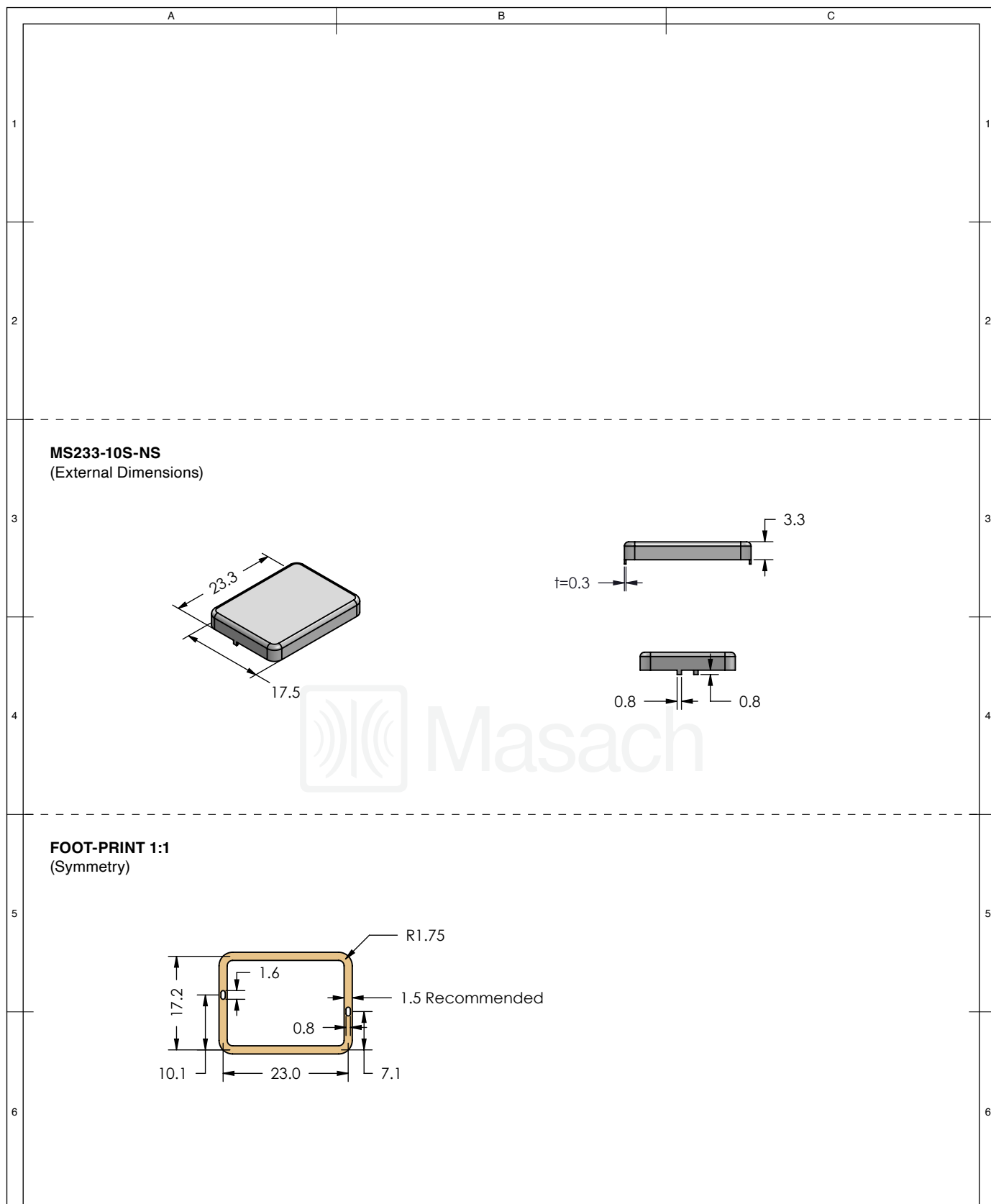
DRAWN-SEAMLESS EM/RFI SHIELD



1 INCH 10 MM

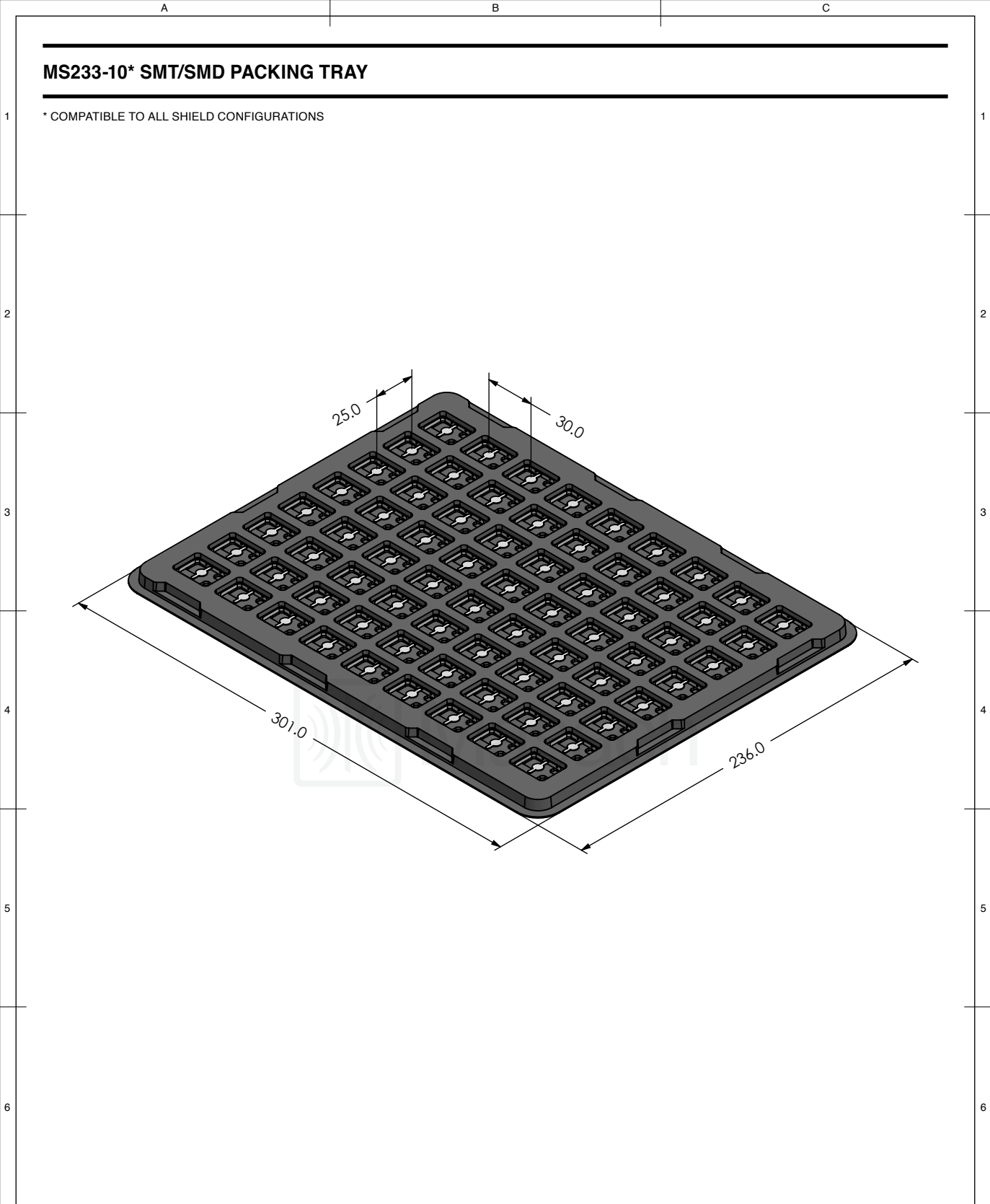
MMGS / PRINT 1:1 / A4




This product has been designed and manufactured by © Masach Tech Ltd. The use of this product in any type of electronic device or application is not under Masach Tech Ltd. liability.



<div></div>	SHIELD CONFIGURATION:		MATERIAL:				
	1-PIECE EMI/RFI SHIELD		NICKEL-SILVER ⁽¹⁾				
	NOTE: (1) UNS C77000 / UNS C73500 (2) GENERAL TOLERANCE (+/-) 0.2MM						
<div>© MASACH TECH LTD. 22 HAGANAN, MODIIN 7169513 ISRAEL T: (+972) 8-9754681 / F: (+972) 8-9754682 info@masach.com / www.masach.com</div>	SHIELD TYPE:		<div><div></div><div></div></div>	<div><div></div><div>1 INCH</div><div></div></div>		<div><div></div><div>10 MM</div><div></div></div>	
	DRAWN-SEAMLESS EMI/RFI SHIELD						
	MMGS / PRINT 1:1 / A4						

This product has been designed and manufactured by © Masach Tech Ltd. The use of this product in any type of electronic device or application is not under Masach Tech Ltd. liability.



<div><div>Masach</div></div>	SHIELD CONFIGURATION:		MATERIAL:	
<div>© MASACH TECH LTD. 22 HAGANAN, MODIIN 7169513 ISRAEL T: (+972) 8-9754681 / F: (+972) 8-9754682 info@masach.com / www.masach.com</div>	SHIELD TYPE:		<div><div><div>RoHS Compliant</div></div><div><div>REACH Compliant</div></div></div>	<div><div>1 INCH</div><div>10 MM</div></div>
				MMGS / PRINT 1:1 / A4

This product has been designed and manufactured by © Masach Tech Ltd. The use of this product in any type of electronic device or application is not under Masach Tech Ltd. liability.