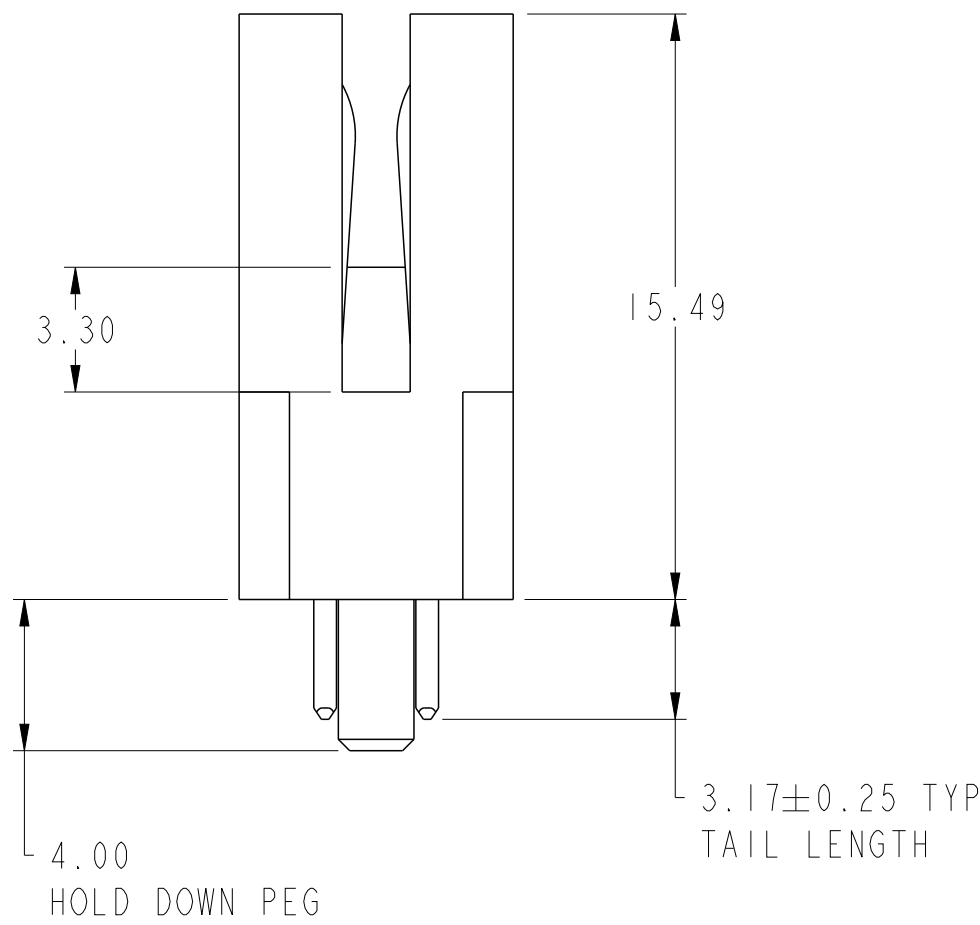
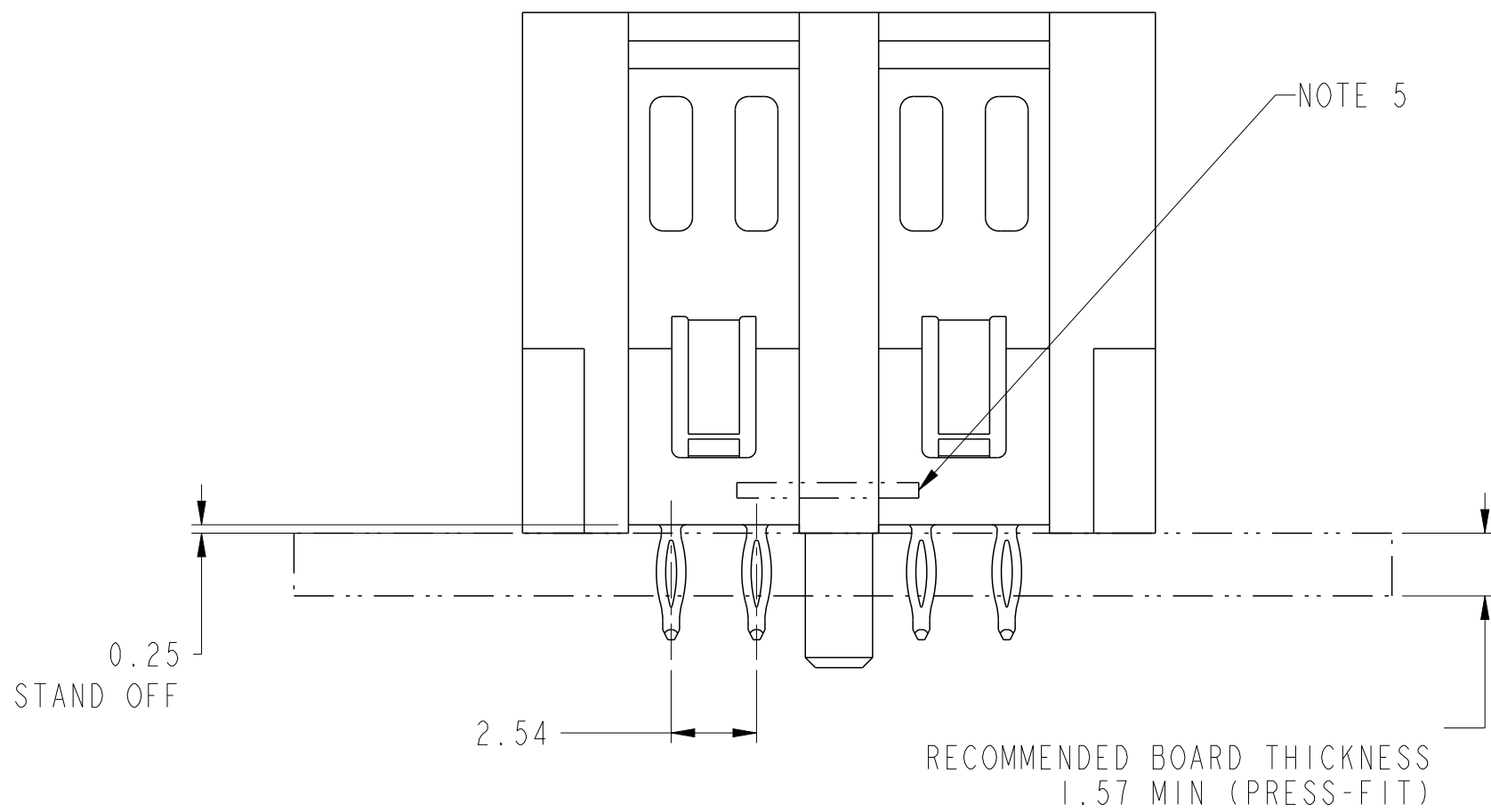
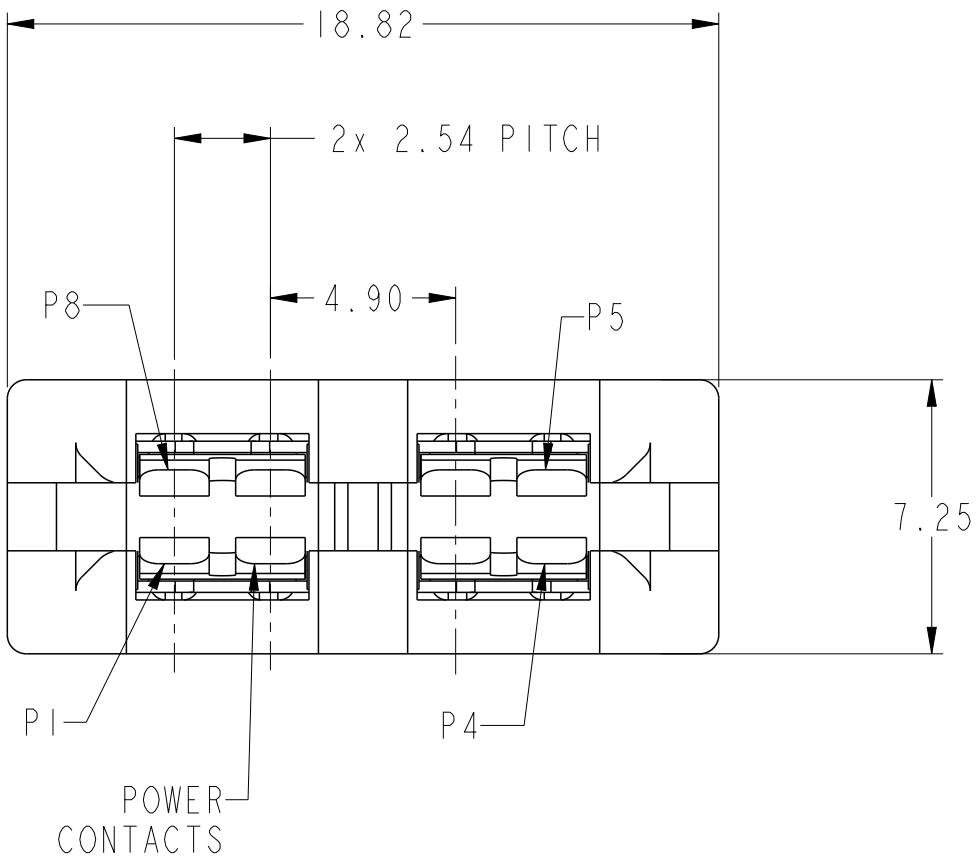


| PART NUMBER | TAIL TYPE |
|----------------|-------------|
| I0139324-001LF | PRESS FIT |
| I0139324-002LF | SOLDER TAIL |

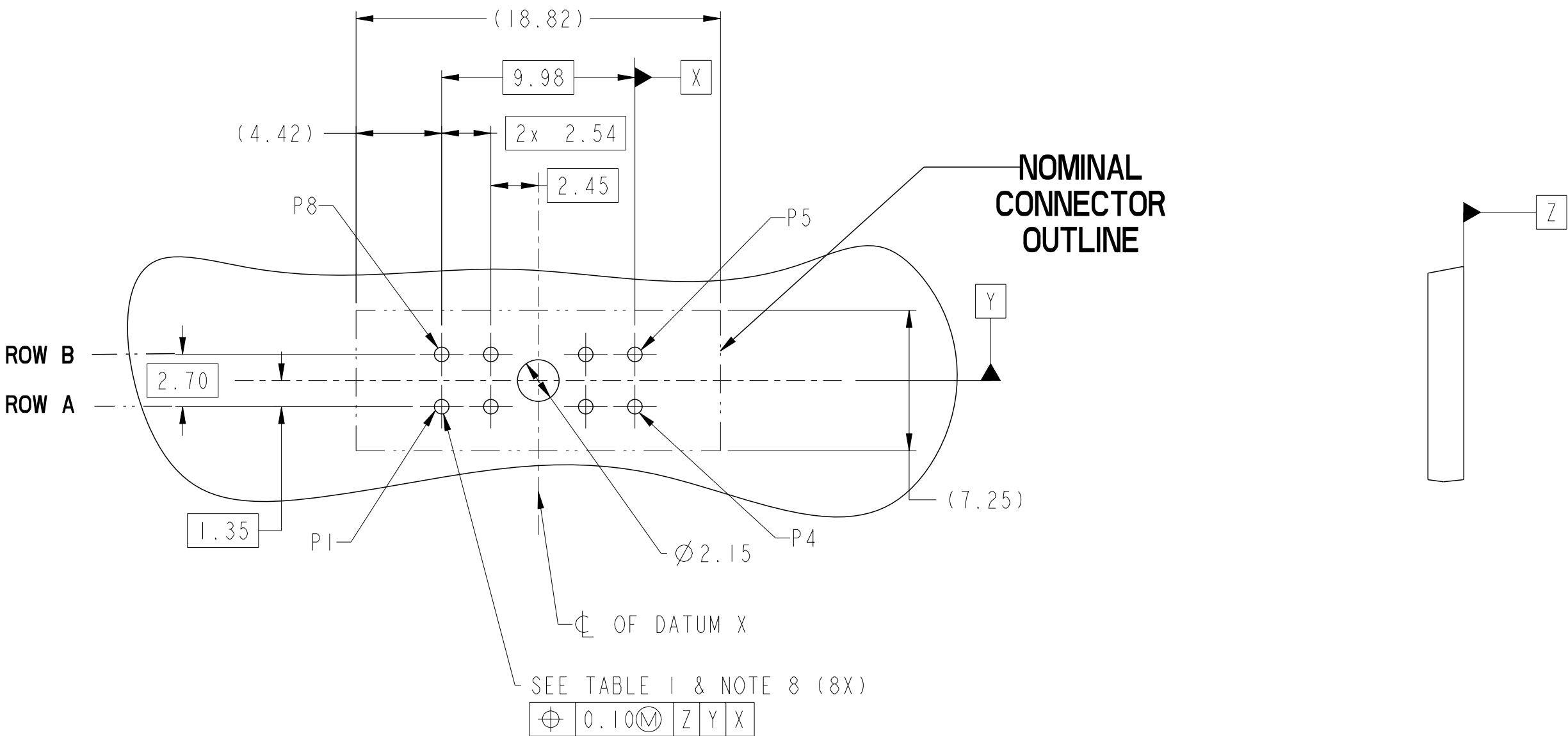


| | | | | | | | | | | |
|---------------|----------------------|------------------------|-----------------|------------|--------------------------------|--------------|------------|----------|-------|-----|
| spec ref | - | dr | Hai-Ling Liu | 2016/04/13 | projection | mm | size | A2 | scale | 5:1 |
| tolerance std | ISO 406 ISO 1101 | eng | Hai-Ling Liu | 2016/05/05 | chr | Terris Liu | 2016/05/04 | ecn no | - | |
| surface | ASME Y14.5 | appr | Pei-Ming Zheng | 2016/05/05 | product family | CARD EDGE | rel level | Released | | |
| linear | 0.X 0.XX 0.XXX | ±0.5 ±0.25 ±0.10 | Amphenol FCI | title | HPCE MEZZANINE 4LP WITH RIB | dwg no | I0139324 | rev | A | |
| angular | 0° | ±2° | cat. no. | - | Product - Customer Drw | sheet 1 of 3 | | | | |

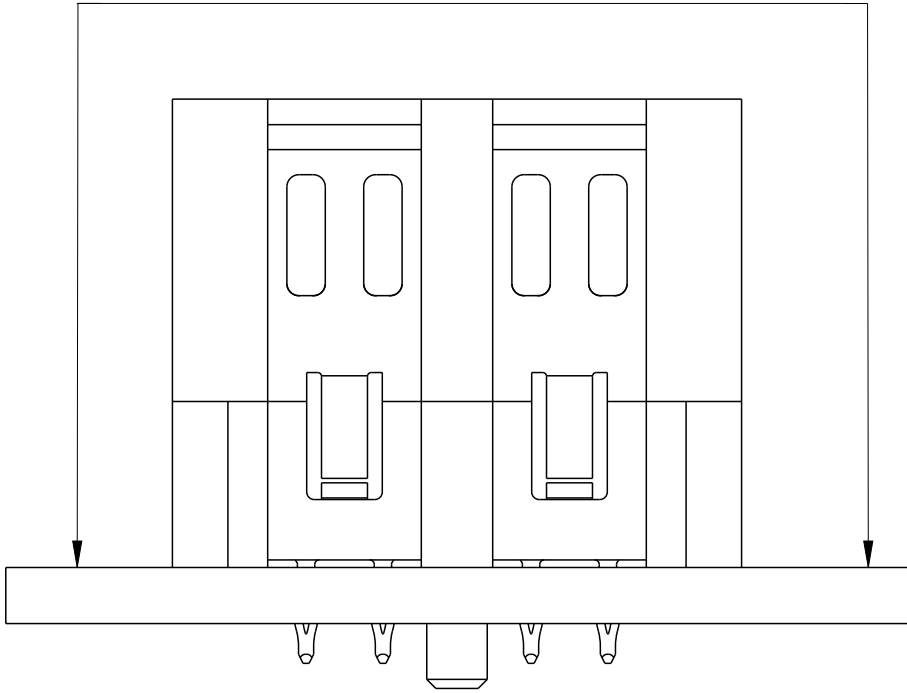
PDS: Rev :A

STATUS:Released

Printed: May 05, 2016

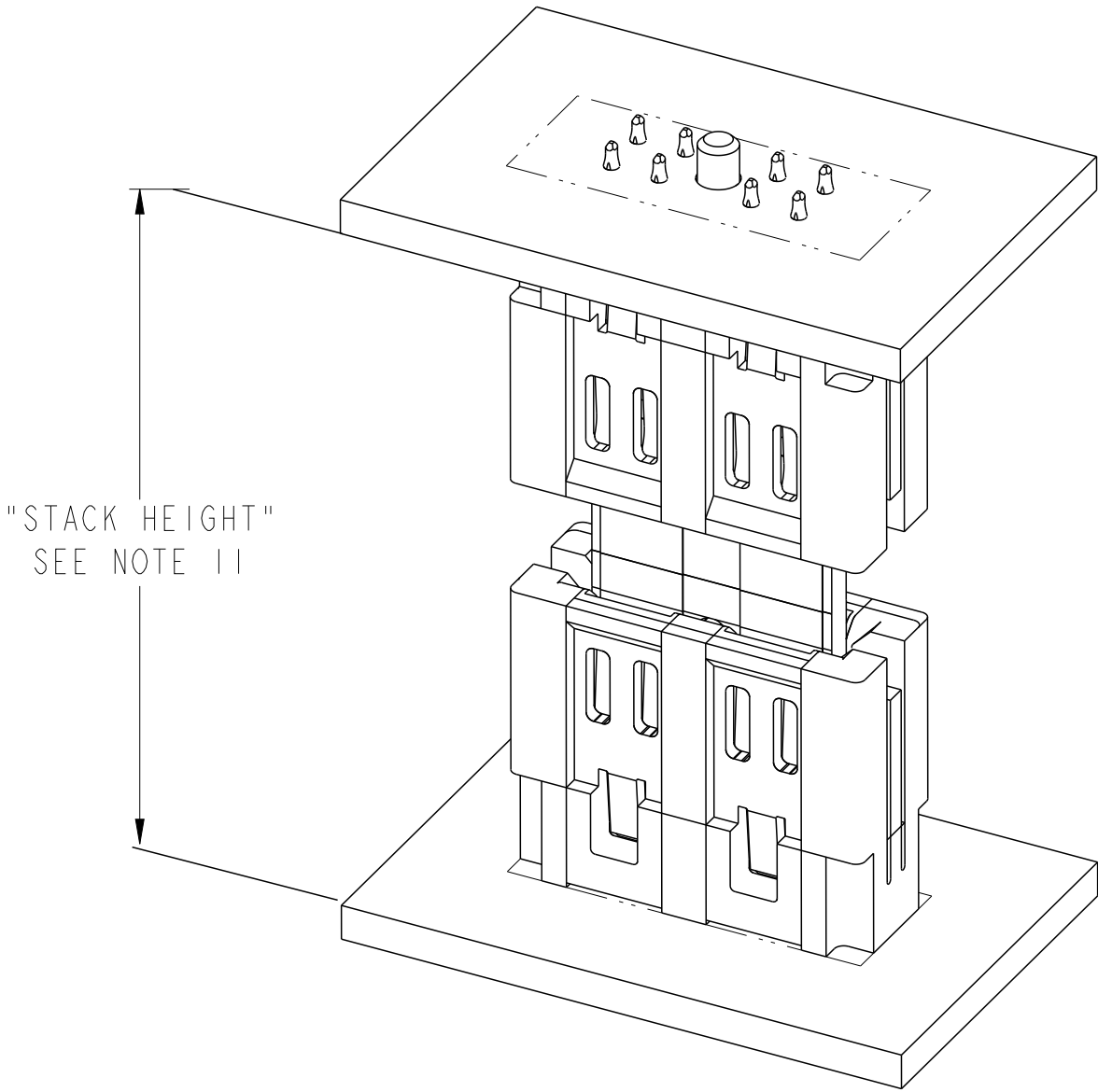


RECOMMENDED PCB LAYOUT
VIEWED FROM CONNECTOR SIDE





| | | | | | | | | | | | | | | | |
|---------------------------------------|--|-------------|--|--------------------------------|--|------------------------|--|----|--|----------|--|--------------------|--|-------|--|
| spec ref - | | | | dr Hai-Ling Liu 2016/04/13 | | projection | | mm | | size A2 | | scale 2:1 | | | |
| tolerance std | | | | eng Hai-Ling Liu 2016/05/05 | | | | | | ecn no - | | rel level Released | | | |
| ISO 406 ISO 1101 | | | | chr Terris Liu 2016/05/04 | | | | | | | | | | | |
| TOLERANCES UNLESS OTHERWISE SPECIFIED | | | | appr Pei-Ming Zheng 2016/05/05 | | product family | | - | | | | | | | |
| surface - | | linear | | Amphenol FCI | | title HPCE MEZZANINE | | | | | | dwg no 10139324 | | rev A | |
| ASME Y14.5 | | 0.X ±0.5 | | | | | | | | | | | | | |
| | | 0.XX ±0.25 | | | | | | | | | | | | | |
| | | 0.XXX ±0.10 | | | | | | | | | | | | | |
| angular | | 0° ±2° | | cat. no. - | | Product - Customer Drw | | | | | | sheet 2 of 3 | | | |

| CONTACT TYPE | TOP LAYER DESCRIPTION | TABLE I (HPCE / PRESS-FIT TAILS) PLATED THROUGH-HOLE REQUIREMENTS | | | | |
|--------------|-----------------------|--|------------------|--------------------|---------------|------------------------|
| | | DRILLED HOLE DIAMETER | COPPER THICKNESS | TIN-LEAD THICKNESS | TIN THICKNESS | FINISHED HOLE DIAMETER |
| POWER | TIN-LEAD | 0.81-0.86 (0.85 DRILL) | 0.025 - 0.050 | 0.005 - 0.015 | -- | 0.65 - 0.80 |
| | IMMERSION TIN | 0.81-0.86 (0.85 DRILL) | 0.025 - 0.050 | -- | 0.9 - 1.5um | 0.70 - 0.80 |
| | COPPER (SEE NOTE 8) | 0.81-0.86 (0.85 DRILL) | 0.025 - 0.050 | -- | -- | 0.70 - 0.80 |
| CONTACT TYPE | TOP LAYER DESCRIPTION | TABLE I (HPCE / SOLDER TAILS) PLATED THROUGH-HOLE REQUIREMENTS | | | | |
| | | DRILLED HOLE DIAMETER | COPPER THICKNESS | TIN-LEAD THICKNESS | TIN THICKNESS | FINISHED HOLE DIAMETER |
| POWER | TIN-LEAD | 1.10-1.16 (1.15 DRILL) | 0.025 - 0.050 | 0.005 - 0.015 | -- | 0.94 - 1.10 |
| | IMMERSION TIN | 1.10-1.16 (1.15 DRILL) | 0.025 - 0.050 | -- | 0.9 - 1.5um | 0.94 - 1.10 |
| | COPPER (SEE NOTE 8) | 1.10-1.16 (1.15 DRILL) | 0.025 - 0.050 | -- | -- | 0.94 - 1.10 |



- NOTES:
- CONNECTOR MATERIALS:
HOUSING: HIGH TEMPERATURE THERMAL PLASTIC, BLACK
UL 94V-0 COMPLIANT
CONTACTS: HIGH PERFORMANCE COPPER ALLOY.
 - CONTACT FINISH REF. GS-12-1261 SECTION 5.3.
 - PRODUCT SPECIFICATION: GS-12-1261.
 - APPLICATION SPECIFICATION: GS-20-128.
 - PRODUCT MARKING ON HOUSING IN AREA SHOWN SHOULD MEET AFCI SPECIFICATION GS-24-007.
 - PACKAGING MEETS FCI SPECIFICATION GS-14-937.
 - HOUSING COMPONENT WILL WITHSTAND EXPOSURE TO 260°C PEAK TEMPERATURE FOR 60 SECONDS IN A CONVECTION, INFRA-RED, OR VAPOR PHASE REFLOW OVEN.
 - COPPER PLATING THICKNESS IN CENTER OF VIA-HOLE CAN BE NO MORE THAN 0.003 LESS THAN OTHER AREAS.
 - ALL HOLE SIZES ARE FINISHED HOLE SIZES.
 - INTENDED USE: TWO ASSEMBLIES (P/N 10134991 MATE TO 10136109) MEZZANINE STACKED USING PCB TO CONTROL STACK HEIGHT.
DIM "L" + 10.98mm = FINAL MEZZANINE STACK HEIGHT.
DIM "L" RANGES FROM 21.02-46.62 mm .
 - SEE DRAWING 10135823 FOR MATING PCB DETAIL

| | | | | | | | | | | | | | | | |
|---------------------|------------|---------|-------|-----------------|--------------------------------------|------------|----------------|---|----|---|----------|--------------|----------|-----|---|
| spec ref - | | | | dr | Hai-Ling Liu | 2016/04/13 | projection |  | mm |  | size | A2 | scale | 1:1 | |
| tolerance std | | | | eng | Hai-Ling Liu | 2016/05/05 | | | | | ecn no - | | | | |
| ISO 406 ISO 1101 | | | | chr | Terris Liu | 2016/05/04 | | | | | | rel level | Released | | |
| | | | | appr | Pei-Ming Zheng | 2016/05/05 | product family | | - | | | | | | |
| surface | linear | 0.X | ±0.5 | Amphenol FCi | title HPCE MEZZANINE 4LP WITH RIB | | | | | dwg no | 10139324 | | | rev | A |
| | | 0.XX | ±0.25 | | | | | | | | | | | | |
| | | 0.XXX | ±0.10 | | | | | | | | | | | | |
| | ASME Y14.5 | angular | 0° | | ±2° | cat. no. | - | Product - Customer Drw | | | | sheet 3 of 3 | | | |