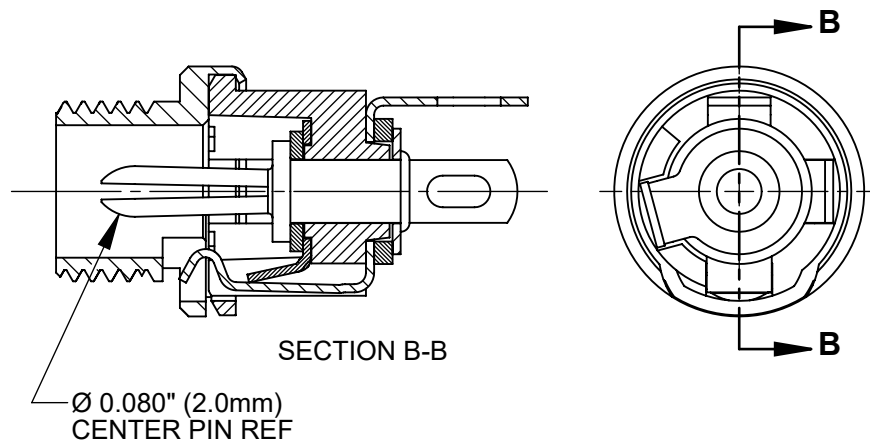
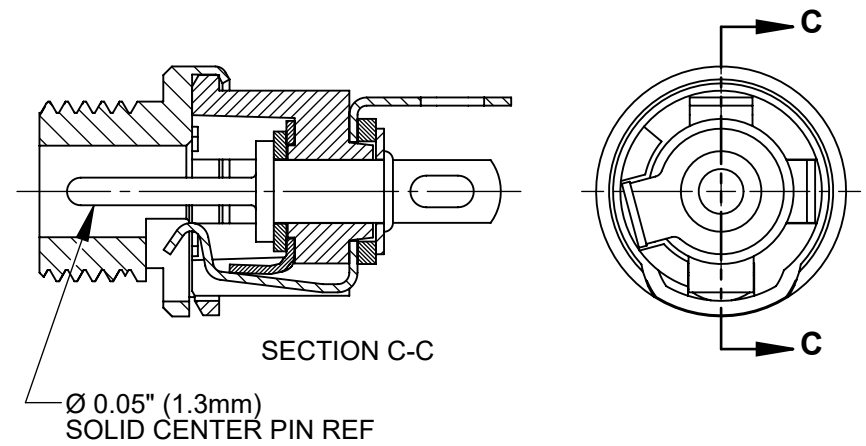


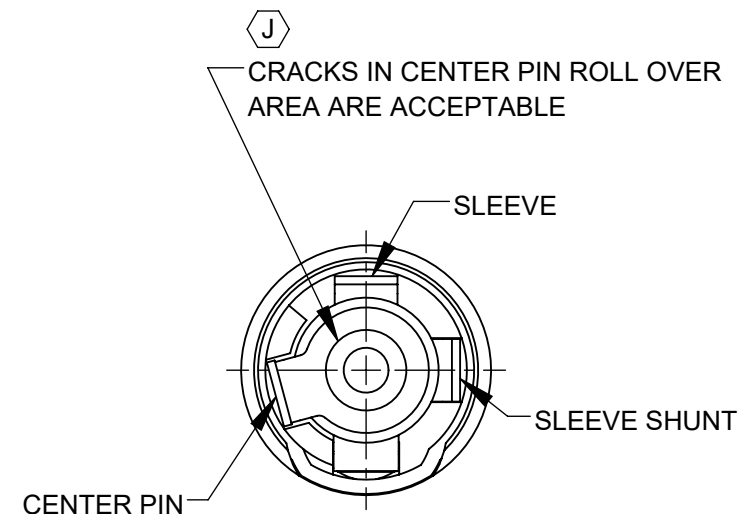
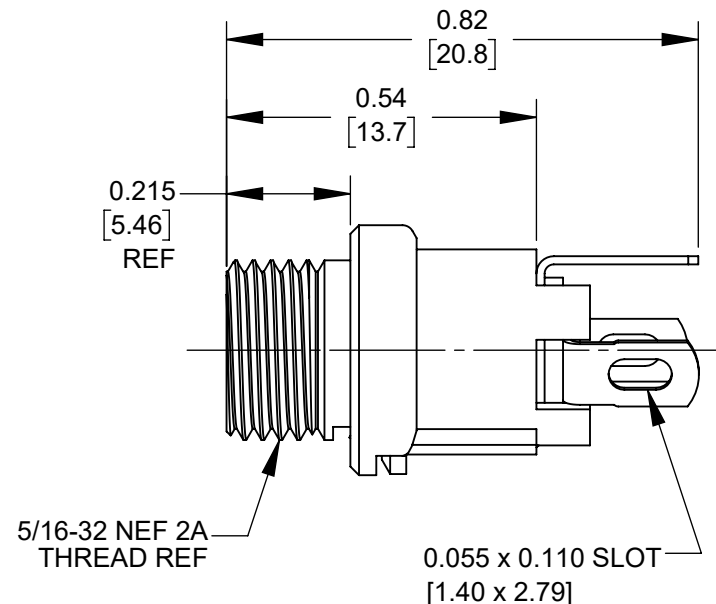
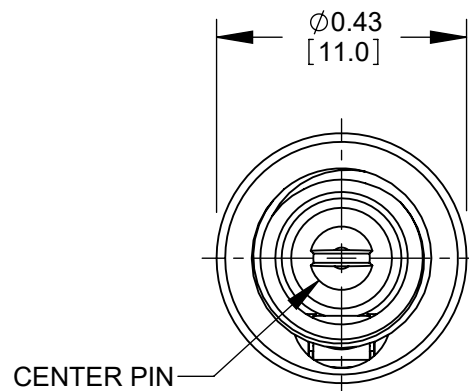
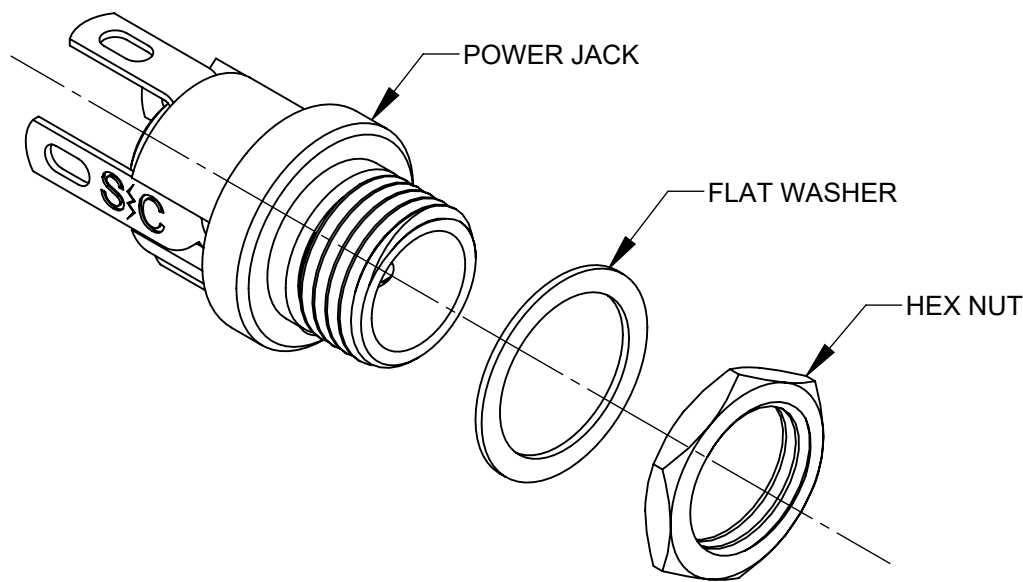
712A



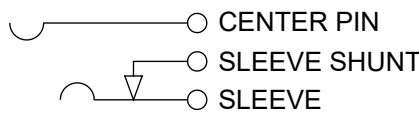
722A



732A



- NOTES:
- DIMENSIONS SHOWN FOR REFERENCE ONLY.
  - HEX NUT AND FLAT WASHER SUPPLIED UNASSEMBLED.
  - MATERIAL:  
HOUSING, HEX NUT - COPPER ALLOY, NICKEL PLATED  
INSULATOR HOUSING - THERMOPLASTIC, BLACK  
TERMINAL INSULATORS - PHENOLIC  
FLAT WASHER - STEEL, NICKEL PLATED  
PIN, SPRING, TERMINALS - COPPER ALLOY, SILVER PLATED
  - IT IS RECOMMENDED THAT THE JACK MOUNTING NUT BE TIGHTENED SNUG BY HAND BEFORE APPLYING A FINAL TIGHTENING TORQUE OF 8-10 LB-IN USING HAND TOOLS ONLY. POWER DRIVER OR IMPACT DRIVERS ARE NOT RECOMMENDED.
  - THESE PRODUCTS ARE RoHS COMPLIANT



SCHEMATIC

REV	ECO NUMBER	DATE	BY	APVD
J	28397	06-11-21	PC	TJK
H	27884	05-04-17	PC	TJK
REV	ECO NUMBER	DATE	BY	APVD

UNLESS OTHERWISE SPECIFIED	
1. ALL DIMENSIONS IN INCHES [mm]	
- TWO PLACE DECIMALS ±0.02 [0.5]	
- THREE PLACE DECIMALS ±0.005 [0.13]	
DO NOT SCALE DRAWING	

THIS DRAWING DESCRIBES A DESIGN CONSIDERED PROPRIETARY IN NATURE, DEVELOPED AND MANUFACTURED BY SWITCHCRAFT INC. AND IS RELEASED ON A CONFIDENTIAL BASIS FOR IDENTIFICATION PURPOSES ONLY.									
SIZE		WIDTH		MULT		LBS/M		TEMPER	
FINISH SPEC No.						MATERIAL SPEC No.			
FIRST USED ON				SCALE 3:1		Switchcraft®			
DATE DRAWN	BY	CHKD	APVD						
09-27-17	PC	PC	TJK						
		09-27-17	09-27-17						
NAME POWER JACKS 7_2A SERIES, RoHS						PART No. 712A 722A 732A		REV J	