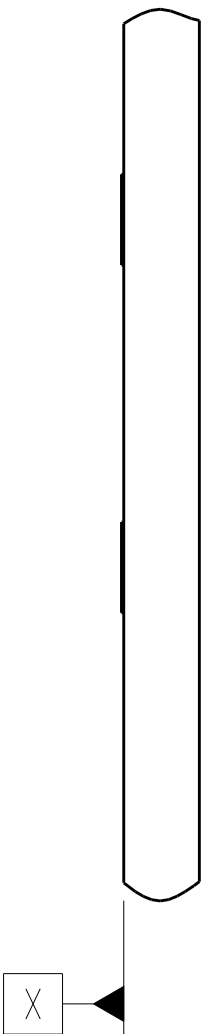




1. HOUSING AND CONTACT OVERMOLDS - LCP, UL94V-0, BLACK. SHELL, CONTACTS, HOLD DOWNS - COPPER ALLOY. PICK AND PLACE TAPE - POLYIMIDE FILM.
2. CONTACTS - GOLD PLATE ON MATING SURFACES, TIN PLATE ON SOLDER FEET. HOLD DOWNS - TIN PLATE. SHELL - TIN PLATE.
3. DATUMS AND BASIC DIMENSIONS ESTABLISHED BY CUSTOMER.
4. MINIMUM HOST PCB THICKNESS: 1.5.
5. SEE MSA SPECIFICATION FOR ADDITIONAL PADDLE CARD LAYOUTS COMPATABLE WITH THIS RECEPTACLE AND FOR OPTIONAL SPLIT CONTACT PAD LAYOUTS FOR THE PADDLE CARD. SPECIFICATION PINOUT MAY ALSO DESIGNATE PAD SEQUENCE DIFFERENT FROM ILLUSTRATION.
6. POSITIONS DESIGNATED AS "SIGNAL" ARE REQUIRED LOCATIONS FOR HIGH SPEED DIFFERENTIAL PAIR SIGNALING. THESE LOCATIONS MAY ALSO BE USED FOR SUPPORTING SIDEBAND SIGNALS OR OTHER UTILITY PURPOSES. POSITIONS DESIGNATED AS "GROUND" ARE REQUIRED WHEN SUPPORTING HIGH SPEED DIFFERENTIAL SIGNALS. THESE LOCATIONS MAY ALSO BE USED FOR SIDEBAND SIGNALS OR OTHER UTILITY PURPOSES.
7. RECOMMENDED COMPONENT AND TRACE KEEP OUT AREA. EACH EDGE 0.15 MIN FROM EDGE OF HOLE.
8. TAPE AND REEL PACKAGED FOR PICK AND PLACE SMT PROCESSING, SEE FIGURE 1. POCKET TAPE WIDTH = 56.

SEE SHEET 4
FOR PART TABLE

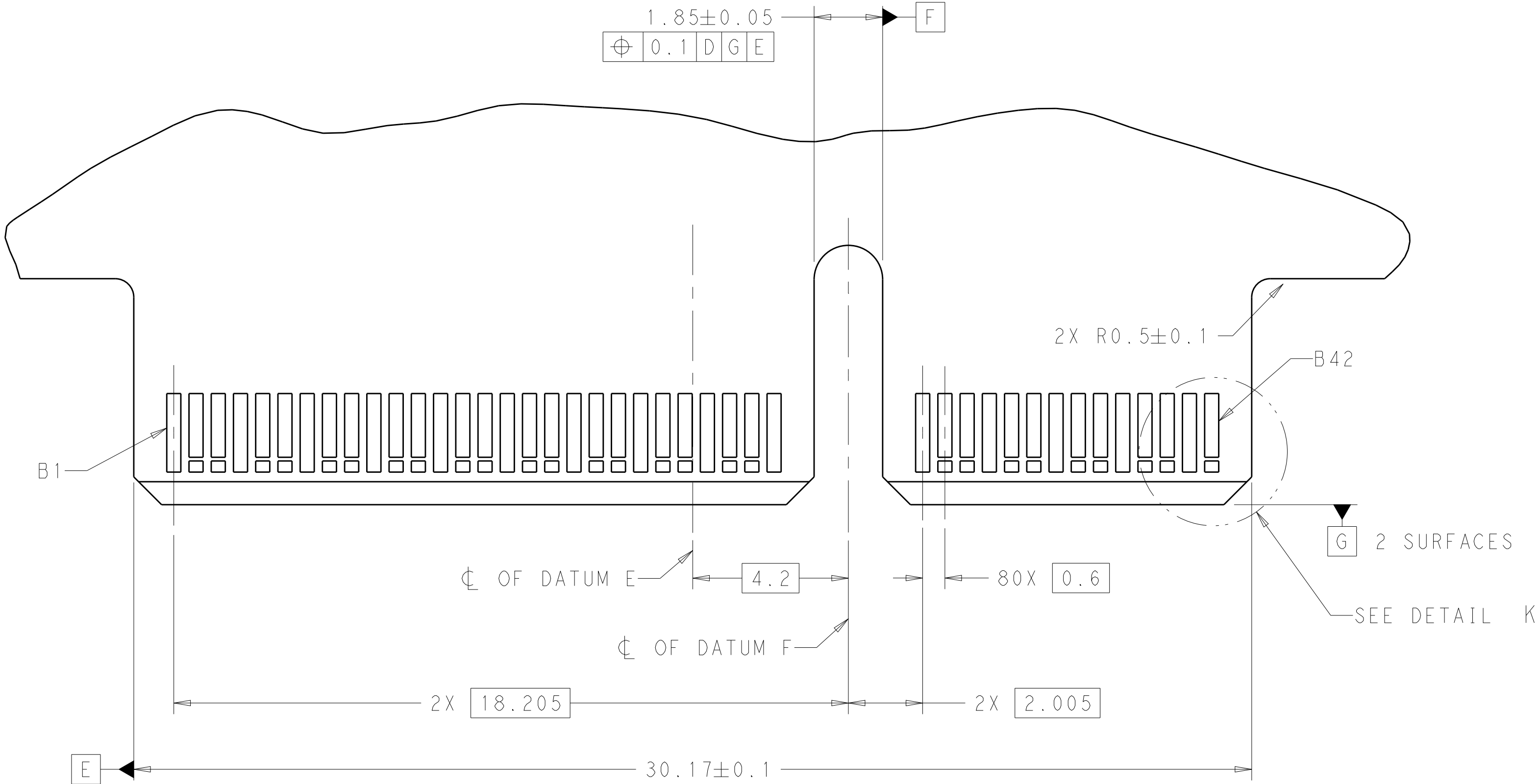
REVISIONS					
P	LTR	DESCRIPTION	DATE	DWN	APVD
A		RELEASED PER ECO-19-013357	29AUG2019	CJV	JW
B		REVISED PER ECO-19-014774	26SEP2019	CJV	JW

THIS DRAWING IS A CONTROLLED DOCUMENT.		DWN B. MATTHEWS 12MAR2018	TE Connectivity	
DIMENSIONS: mm		CHK D. HARMON 12MAR2018		
TOLERANCES UNLESS OTHERWISE SPECIFIED:		APVD D. HARMON 12MAR2018	NAME RECEPTACLE ASSEMBLY, VERTICAL, 84 POSITION, SLIVER 2.0	
0 PLC ±.5		PRODUCT SPEC	SIZE A1	
1 PLC ±0.13		108-130021	CAGE CODE -	
2 PLC ±0.13		APPLICATION SPEC	DRAWING NO. 2331813	
3 PLC ±0.013		114-130015	RESTRICTED TO	
4 PLC ±0.0001		WEIGHT -	SCALE 10:1	
ANGLES ±.1		CUSTOMER DRAWING	SHEET 1 OF 4	
FINISH 2			REV B	

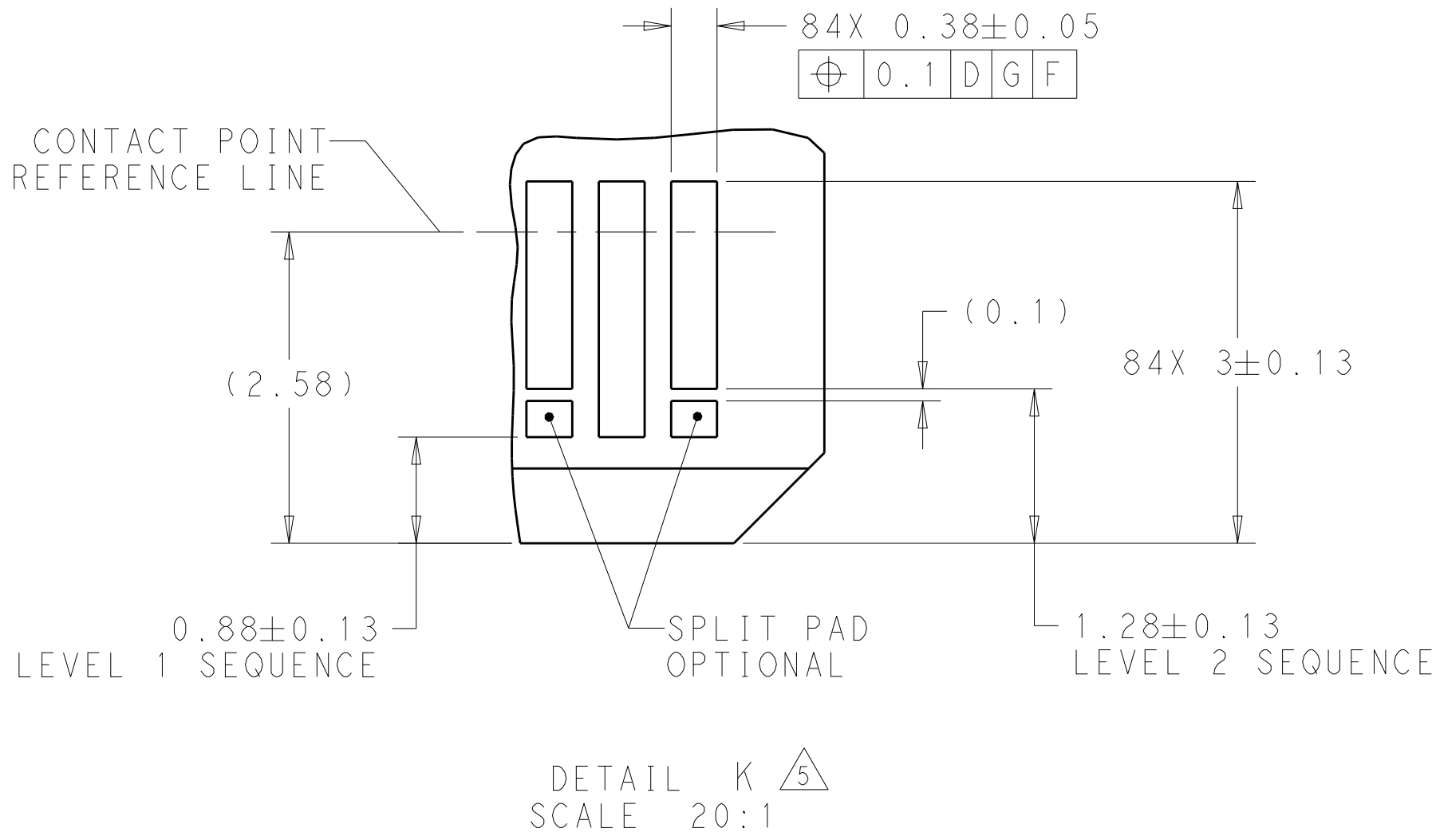
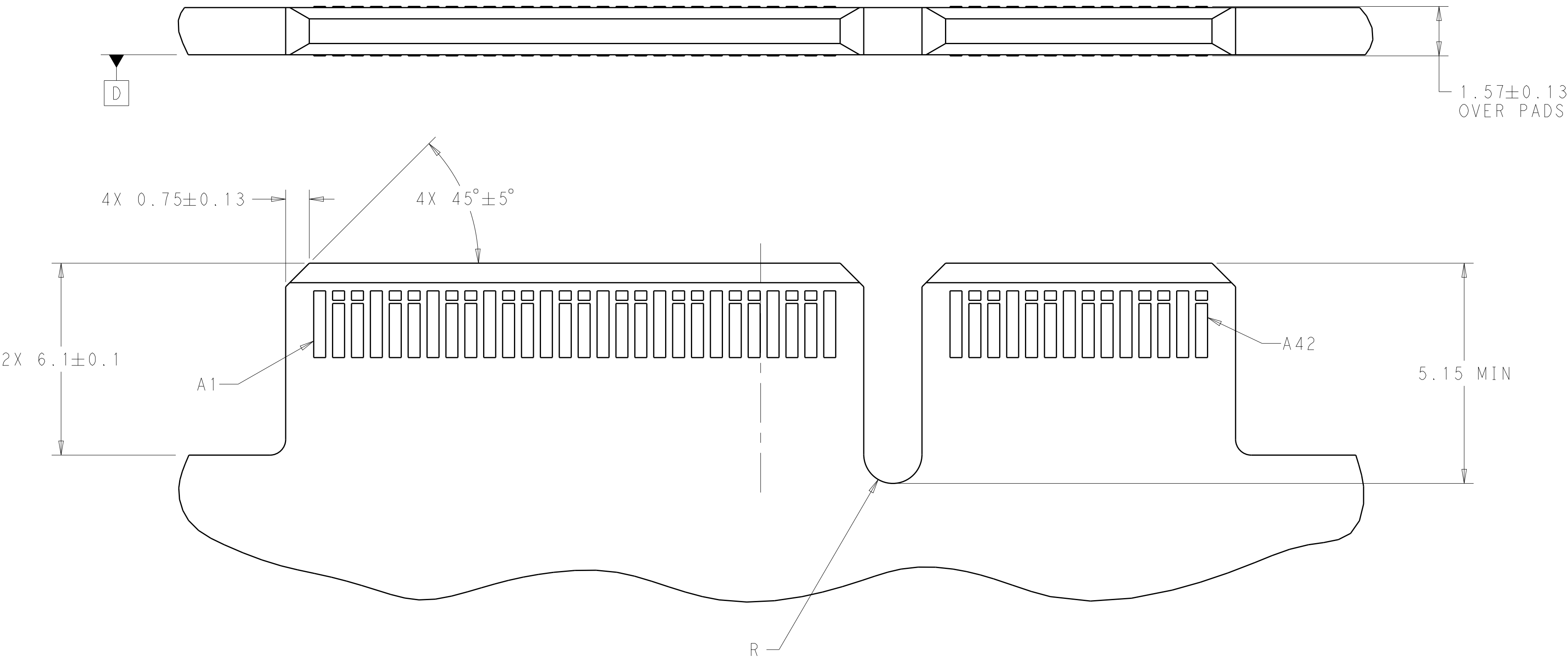
[illegible]

THIS DRAWING IS A CONTROLLED DOCUMENT.		DWN D. MATTHEWS 12MAR2018		 TE Connectivity	
		CHP D. HARMON 12MAR2018			
DIMENSIONS:		TOLERANCES, UNLESS OTHERWISE SPECIFIED:		NAME	
mm				RECEPTACLE ASSEMBLY, VERTICAL, 84 POSITION, SLIVER 2.0	
		PRODUCT SPEC		APPLICATOR	
		108-130021		114-130015	
MATERIAL		FINISH		SIZE CASE CODE DRAWING NO RESTRICTED TO	
				A1 - C-2331813 -	
				CUSTOMER DRAWING	
				SCALE 4:1 SHEET 2 OF 4 REV B	

REVISIONS					
P	LTR	DESCRIPTION	DATE	DWN	APVD
-	-	SEE SHEET 1	-	-	-



RECOMMENDED PCB OUTLINE DIMENSIONS.
TOLERANCE VALUES ARE CRITICAL. PLEASE BE SURE TO DESIGNATE
TOLERANCES TO PCB SUPPLIER TO ENSURE OPTIMIZED FUNCTIONALITY.

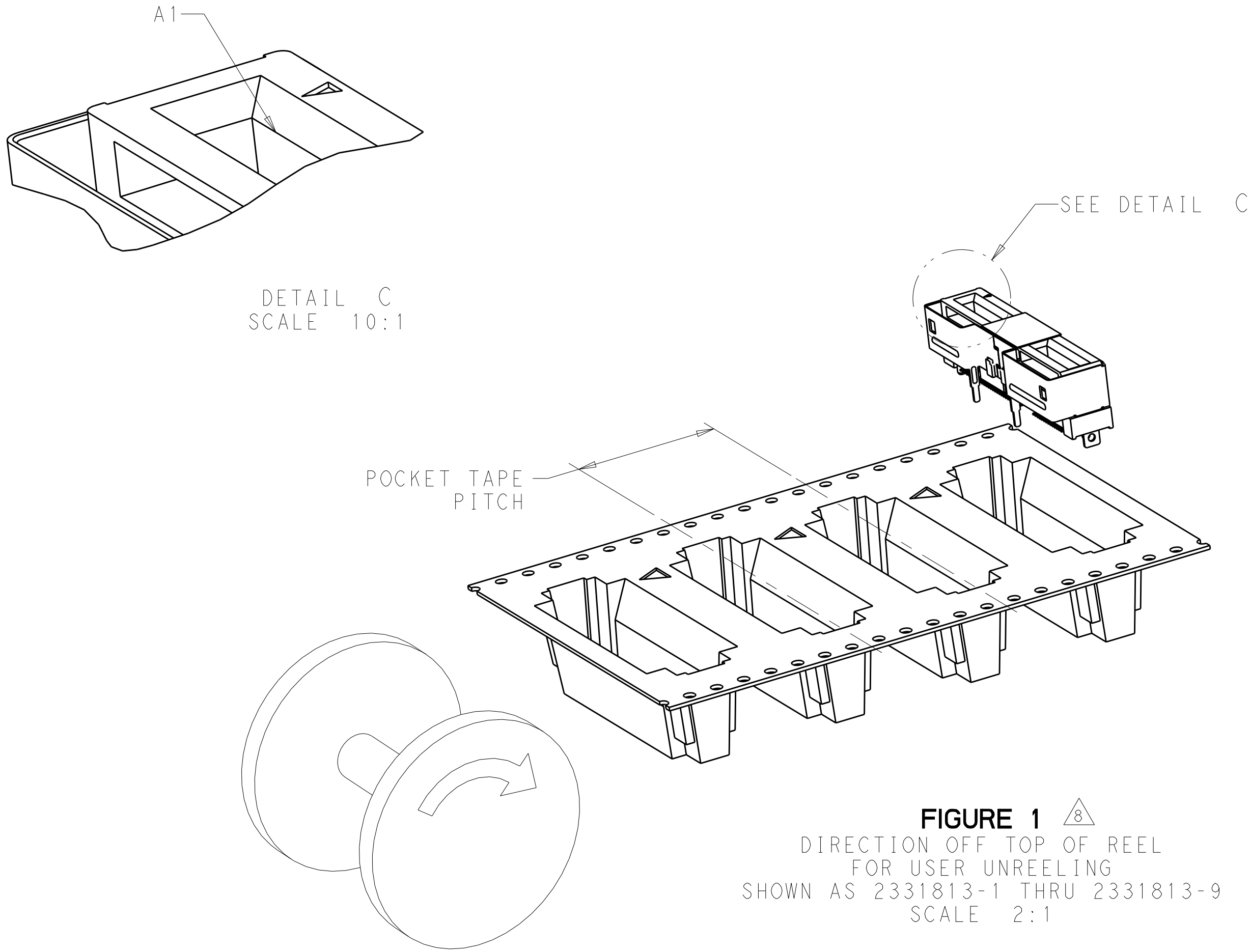


THIS DRAWING IS A CONTROLLED DOCUMENT.		DWN B. MATTHEWS 12MAR2018	TE Connectivity	
DIMENSIONS:		CHK D. HARMON 12MAR2018		
mm	TOLERANCES UNLESS OTHERWISE SPECIFIED:	APVD D. HARMON 12MAR2018	NAME RECEPTACLE ASSEMBLY, VERTICAL, 84 POSITION, SLIVER 2.0	
	0 PLC ±.5 1 PLC ±0.13 2 PLC ±0.13 3 PLC ±0.013 4 PLC ±0.0001 ANGLES ±.0001	PRODUCT SPEC 108-130021	SIZE A1	
MATERIAL	FINISH	APPLICATION SPEC 114-130015	CAGE CODE -	
		WEIGHT -	DRAWING NO. C=2331813	
		CUSTOMER DRAWING		RESTRICTED TO -
		SCALE 10:1		SHEET 3 OF 4
				REV B

REVISIONS					
P	LTR	DESCRIPTION	DATE	DWN	APVD
-	-	SEE SHEET 1	-	-	-

TABLE 1: CONNECTOR CONTACT IDENTIFICATION 56

CONTACT NUMBER	SIDE A	SIDE B
1	GROUND	GROUND
2	SIGNAL	SIGNAL
3	SIGNAL	SIGNAL
4	GROUND	GROUND
5	SIGNAL	SIGNAL
6	SIGNAL	SIGNAL
7	GROUND	GROUND
8	SIGNAL	SIGNAL
9	SIGNAL	SIGNAL
10	GROUND	GROUND
11	SIGNAL	SIGNAL
12	SIGNAL	SIGNAL
13	GROUND	GROUND
14	SIGNAL	SIGNAL
15	SIGNAL	SIGNAL
16	GROUND	GROUND
17	SIGNAL	SIGNAL
18	SIGNAL	SIGNAL
19	GROUND	GROUND
20	SIGNAL	SIGNAL
21	SIGNAL	SIGNAL
22	GROUND	GROUND
23	SIGNAL	SIGNAL
24	SIGNAL	SIGNAL
25	GROUND	GROUND
26	SIGNAL	SIGNAL
27	SIGNAL	SIGNAL
28	GROUND	GROUND
29	GROUND	GROUND
30	SIGNAL	SIGNAL
31	SIGNAL	SIGNAL
32	GROUND	GROUND
33	SIGNAL	SIGNAL
34	SIGNAL	SIGNAL
35	GROUND	GROUND
36	SIGNAL	SIGNAL
37	SIGNAL	SIGNAL
38	GROUND	GROUND
39	SIGNAL	SIGNAL
40	SIGNAL	SIGNAL
41	GROUND	GROUND
42	GROUND	GROUND



1.2±0.2	NO	0.76µm Au	24	250	NO	200	1-2331813-8
		0.38µm Au				100	1-2331813-7
		FLASH Au/PdNi				50	1-2331813-7
1.8 +0.2/-0.1	NO	0.76µm Au	24	250	NO	200	1-2331813-6
		0.38µm Au				100	1-2331813-5
		FLASH Au/PdNi				50	1-2331813-4
1.8 +0.2/-0.1	YES	0.76µm Au	24	250	NO	200	1-2331813-3
		0.38µm Au				100	1-2331813-2
		FLASH Au/PdNi				50	1-2331813-1
1.2±0.2	NO	0.76µm Au	20	300	YES	200	2331813-9
		0.38µm Au				100	2331813-8
		FLASH Au/PdNi				50	2331813-7
1.8 +0.2/-0.1	NO	0.76µm Au	20	300	YES	200	2331813-6
		0.38µm Au				100	2331813-5
		FLASH Au/PdNi				50	2331813-4
1.8 +0.2/-0.1	YES	0.76µm Au	20	300	YES	200	2331813-3
		0.38µm Au				100	2331813-2
		FLASH Au/PdNi				50	2331813-1
A	CENTER HOLD DOWN	PLATING	POCKET TAPE PITCH	REEL QUANTITY	PICK AND PLACE TAPE	MATING CYCLES	PART NUMBER

THIS DRAWING IS A CONTROLLED DOCUMENT.

DIMENSIONS: mm

MATERIAL

TOLERANCES UNLESS OTHERWISE SPECIFIED:

0 PLC ±.5
1 PLC ±0.13
2 PLC ±0.13
3 PLC ±0.013
4 PLC ±0.0001
ANGLES ±.
FINISH

WEIGHT

CUSTOMER DRAWING

DWN B. MATTHEWS 12MAR2018
CHK D. HARMON 12MAR2018
APVD D. HARMON 12MAR2018

PRODUCT SPEC 108-130021
APPLICATION SPEC 114-130015

SIZE A1
CAGE CODE -
DRAWING NO. 2331813

RESTRICTED TO

TE Connectivity

RECEPTACLE ASSEMBLY, VERTICAL, 84 POSITION, SLIVER 2.0

SCALE 10:1
SHEET 4 OF 4
REV B