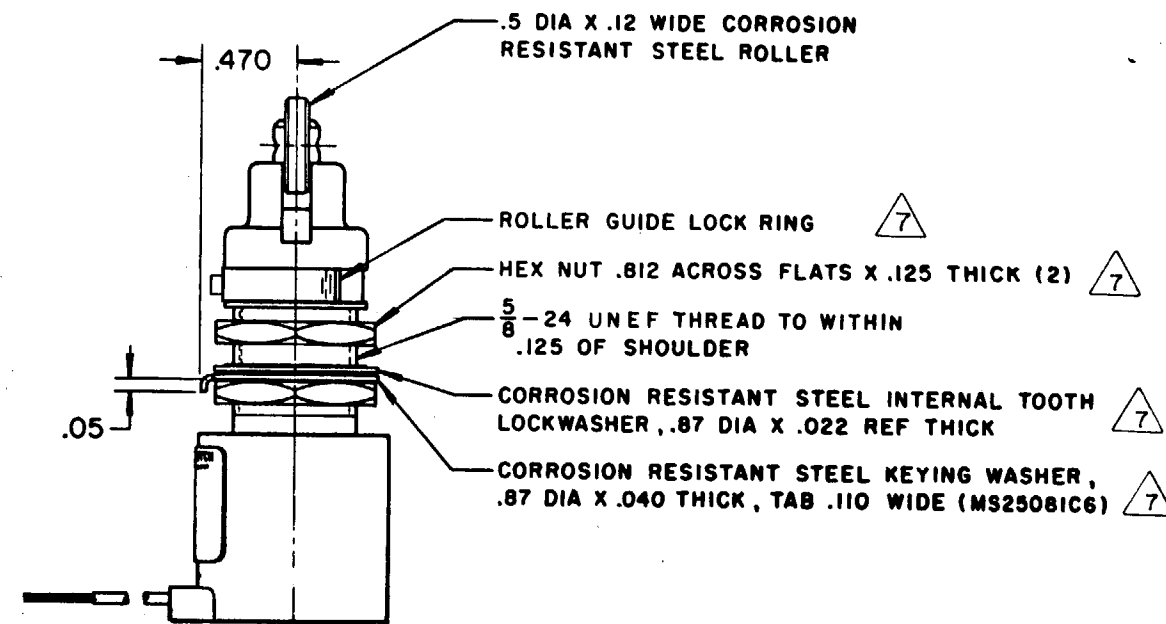
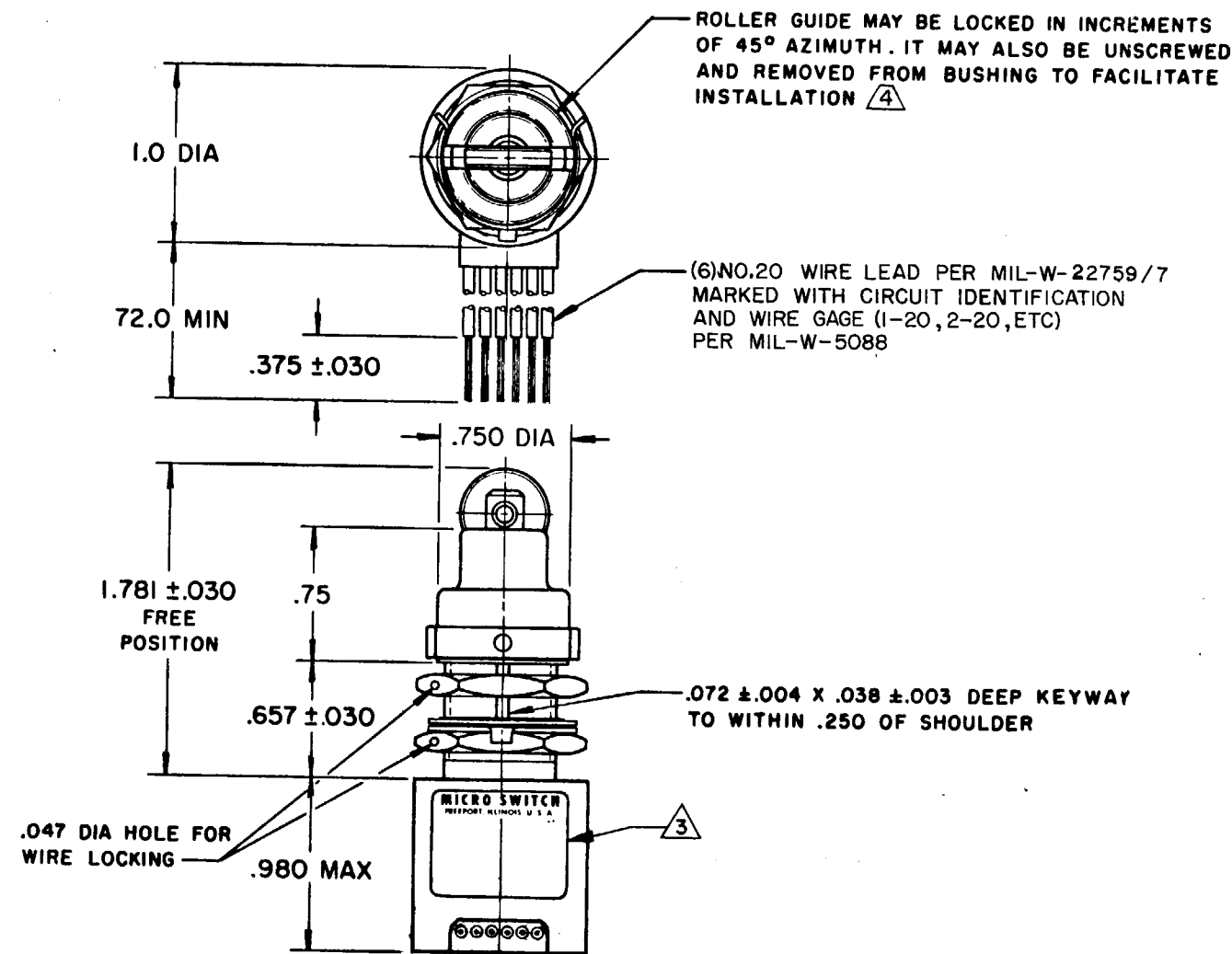
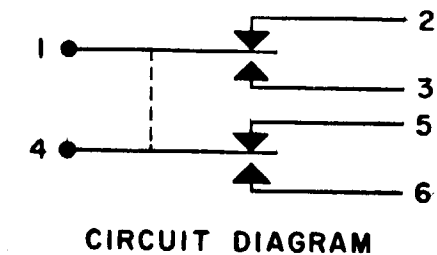


SWITCH-ENCLOSED

CATALOG LISTING
21HE9-6



- 1-CORROSION RESISTANT STEEL ENCLOSURE
- 2-SWITCH SEALED PER MIL-S-8805 SYMBOL 5
- 3-CIRCUIT DIAGRAM, CATALOG LISTING ARE SHOWN ON NAMEPLATE
- 4-TO ADJUST ROLLER DIRECTION, REMOVE ROLLER GUIDE LOCK RING, SCREW ROLLER GUIDE DOWN AS FAR AS POSSIBLE, THEN UNSCREW TO DESIRED DIRECTION. SECURE BY REPLACING ROLLER GUIDE LOCK RING
- 5-FOR OPERATION IN TEMPERATURES OF MINUS 65°F TO PLUS 257°F
- 6-COINCIDENCE OF OPERATING AND RELEASING POINTS: .010 INCH OF PLUNGER TRAVEL
- 7-HARDWARE MAYBE PACKAGED UNASSEMBLED PER MIL-S-8805

THIS DRAWING COVERS A PROPRIETARY ITEM AND IS THE PROPERTY OF MICRO SWITCH, A DIVISION OF MINNEAPOLIS-HONEYWELL REGULATOR CO. THIS DRAWING IS NOT TO BE COPIED OR USED WITHOUT THE APPROVAL OF MICRO SWITCH.

CHARACTERISTICS		ELECTRICAL DATA		SCALE	FULL
OPERATING FORCE	6-12 LB	CONTACT ARRANGEMENT		DO NOT SCALE PRINT	
FULL OVERTRAVEL FORCE	30 LB MAX	S P D T (2)		UNLESS OTHERWISE SPECIFIED	
RELEASE FORCE	4 LB MIN	LOAD	28 VDC		DIMENSIONS ARE IN INCHES
PRETRAVEL	.040 MAX		SEA LEVEL	100,000 FT.	TOLERANCES ARE:
DIFFERENTIAL TRAVEL	.020 MAX		RES	5	ONE PLACE (.0) ±.030
OVERTRAVEL	.250 MIN		IND	3	TWO PLACE (.00) ±.015
			MOTOR	4	THREE PLACE (.000) ±.001
				ANGLES	±
				WEIGHT 7.3 OZ. MAX	