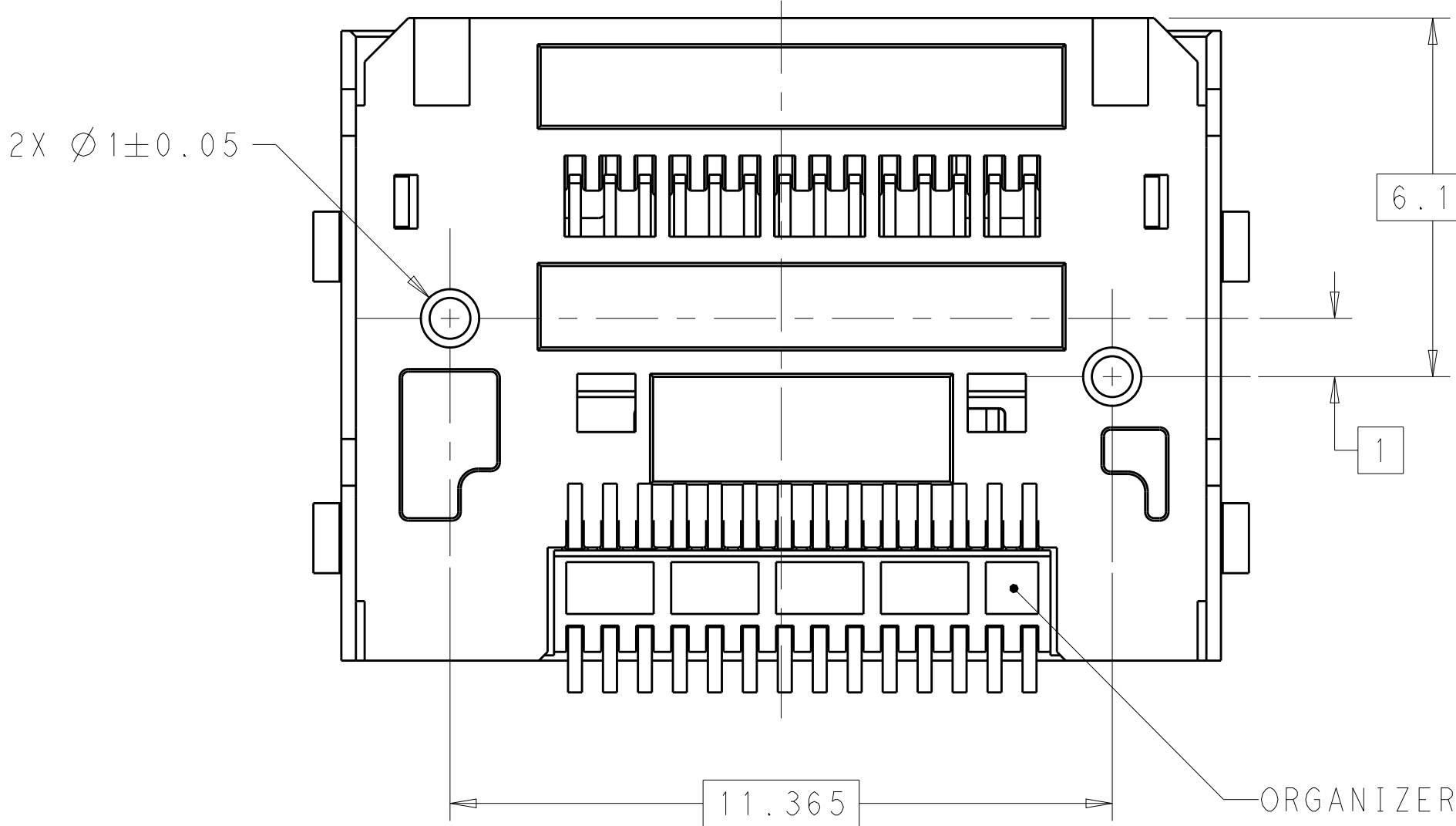
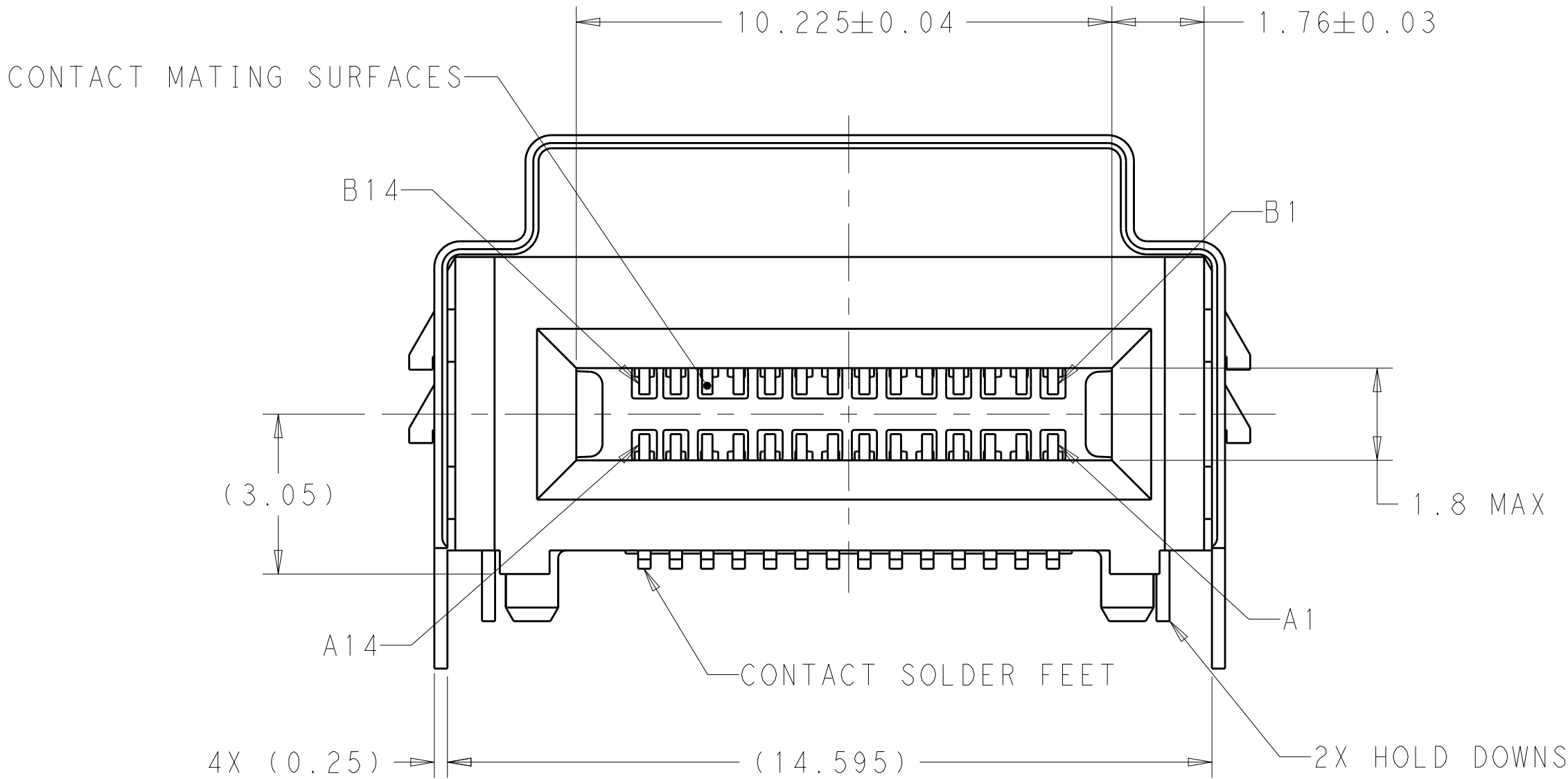
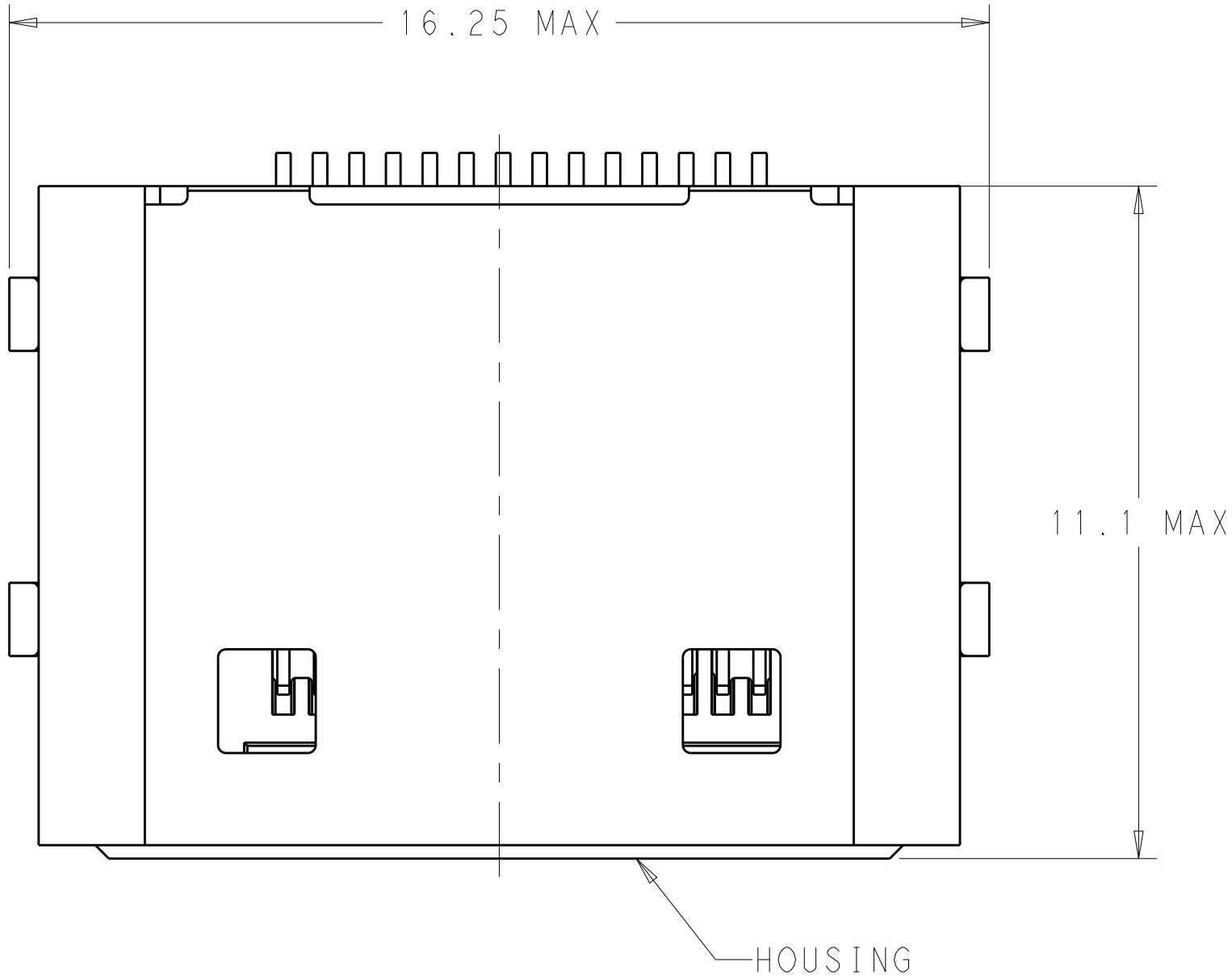
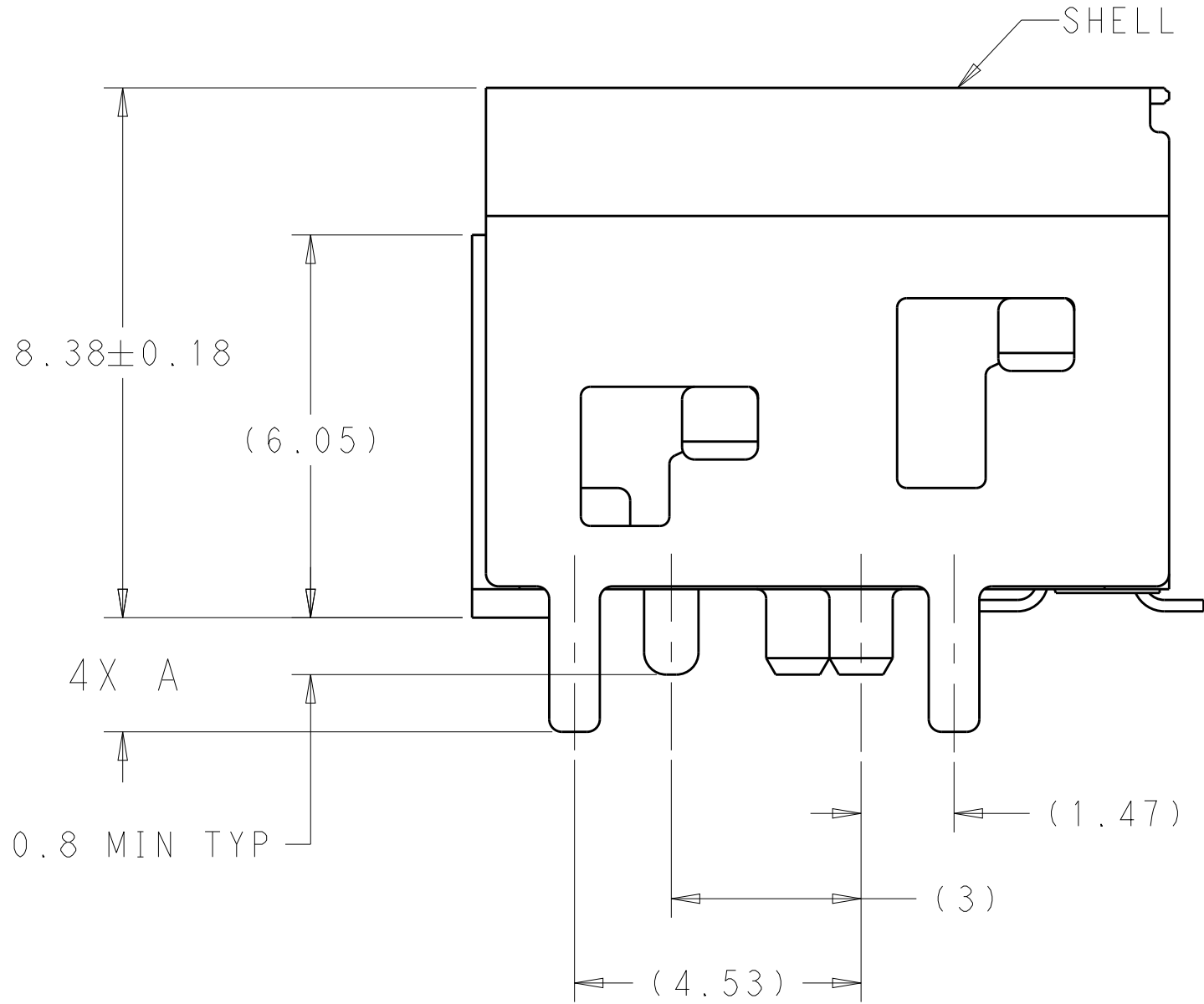


REVISIONS					
P	LTR	DESCRIPTION	DATE	DWN	APVD
	A	RELEASED PER ECO-19-014774	26SEP2019	CJV	JW



- △1 HOUSING, ORGANIZER AND CONTACT OVERMOLDS - LCP, UL94V-0, BLACK.
CONTACTS AND HOLD DOWNS - COPPER ALLOY.
- △2 CONTACTS - GOLD PLATE ON MATING SURFACES, TIN PLATE ON SOLDER FEET.
HOLD DOWNS - TIN PLATE.
SHELL - NICKEL PLATE, TIN PLATE ON HOLD DOWNS.
- △3 DATUMS AND BASIC DIMENSIONS ESTABLISHED BY CUSTOMER.
4. MINIMUM HOST PCB THICKNESS: 1.5.
- △5 SEE MSA SPECIFICATION FOR ADDITIONAL PADDLE CARD LAYOUTS COMPATABLE WITH THIS RECEPTACLE AND FOR OPTIONAL SPLIT CONTACT PAD LAYOUTS FOR THE PADDLE CARD. SPECIFICATION PINOUT MAY ALSO DESIGNATE PAD SEQUENCE DIFFERENT FROM ILLUSTRATION.
- △6 POSITIONS DESIGNATED AS "SIGNAL" ARE REQUIRED LOCATIONS FOR HIGH SPEED DIFFERENTIAL PAIR SIGNALING. THESE LOCATIONS MAY ALSO BE USED FOR SUPPORTING SIDEBAND SIGNALS OR OTHER UTILITY PURPOSES. POSITIONS DESIGNATED AS "GROUND" ARE REQUIRED WHEN SUPPORTING HIGH SPEED DIFFERENTIAL SIGNALS. THESE LOCATIONS MAY ALSO BE USED FOR SIDEBAND SIGNALS OR OTHER UTILITY PURPOSES.
- △7 RECOMMENDED COMPONENT KEEP OUT AREA.
- △8 RECOMMENDED COMPONENT AND TRACES KEEP OUT AREA.
9. TAPE AND REEL PACKAGED FOR PICK AND PLACE SMT PROCESSING.



1.2±0.2	0.76µm Au	24	300	200	1-2345808-6
	0.38µm Au			100	1-2345808-5
	FLASH Au/PdNi			50	1-2345808-4
1.8 +0.2/-0.1	0.76µm Au	24	300	200	1-2345808-3
	0.38µm Au			100	1-2345808-2
	FLASH Au/PdNi			50	1-2345808-1
1.2±0.2	0.76µm Au	20	350	200	2345808-6
	0.38µm Au			100	2345808-5
	FLASH Au/PdNi			50	2345808-4
1.8 +0.2/-0.1	0.76µm Au	20	350	200	2345808-3
	0.38µm Au			100	2345808-2
	FLASH Au/PdNi			50	2345808-1
A	PLATING	POCKET TAPE PITCH	REEL QUANTITY	MATING CYCLES	PART NUMBER

THIS DRAWING IS A CONTROLLED DOCUMENT.

DIMENSIONS:
mm

MATERIAL

1

TOLERANCES UNLESS OTHERWISE SPECIFIED:

0 PLC ±
1 PLC ±
2 PLC ±
3 PLC ±
4 PLC ±
ANGLES ±
FINISH

2

OWN M. SHIRK 25OCT2018
CHK D. HARMON 25OCT2018
APVD D. HARMON 25OCT2018

PRODUCT SPEC
108-130021
APPLICATION SPEC
114-130015

WEIGHT
-

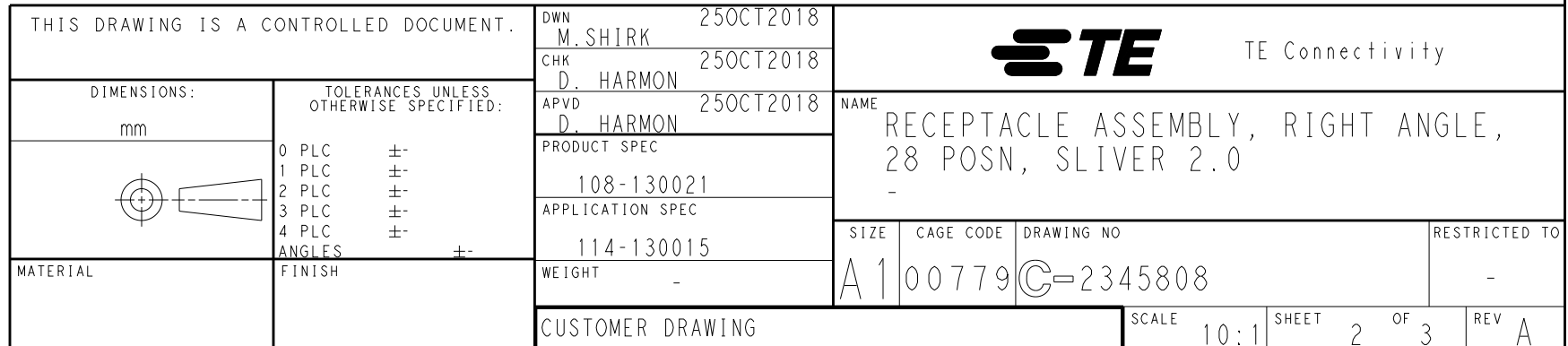
CUSTOMER DRAWING

NAME RECEPTACLE ASSEMBLY, RIGHT ANGLE, 28 POSN, SLIVER 2.0

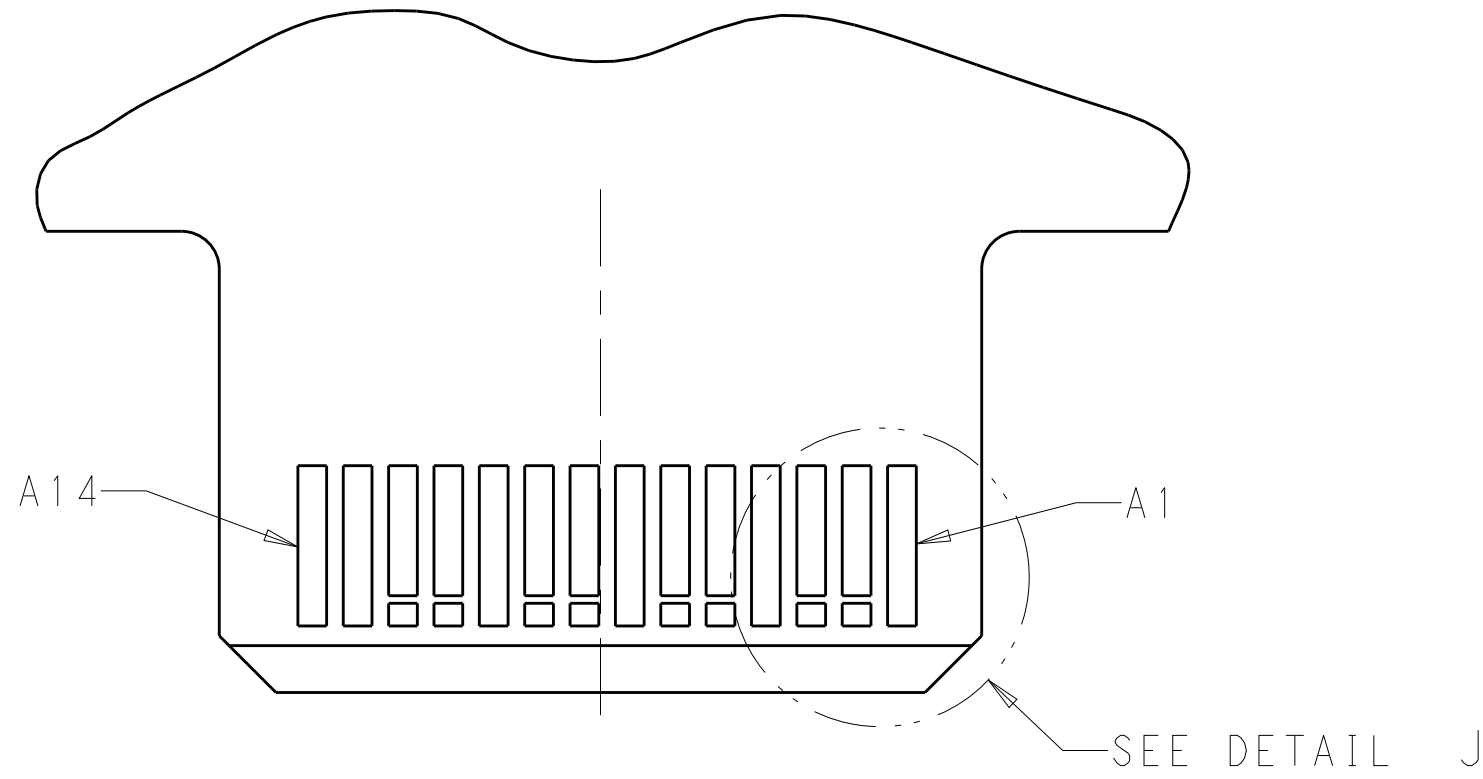
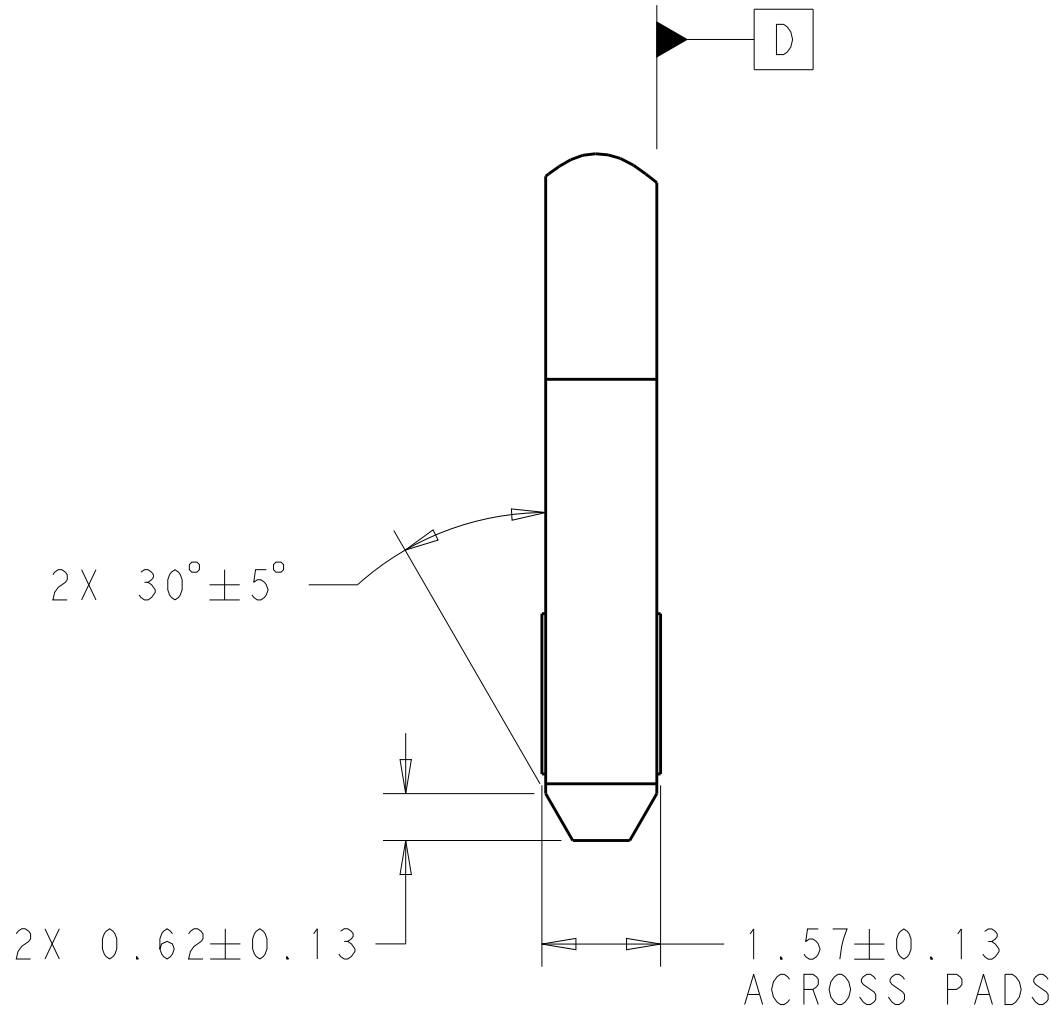
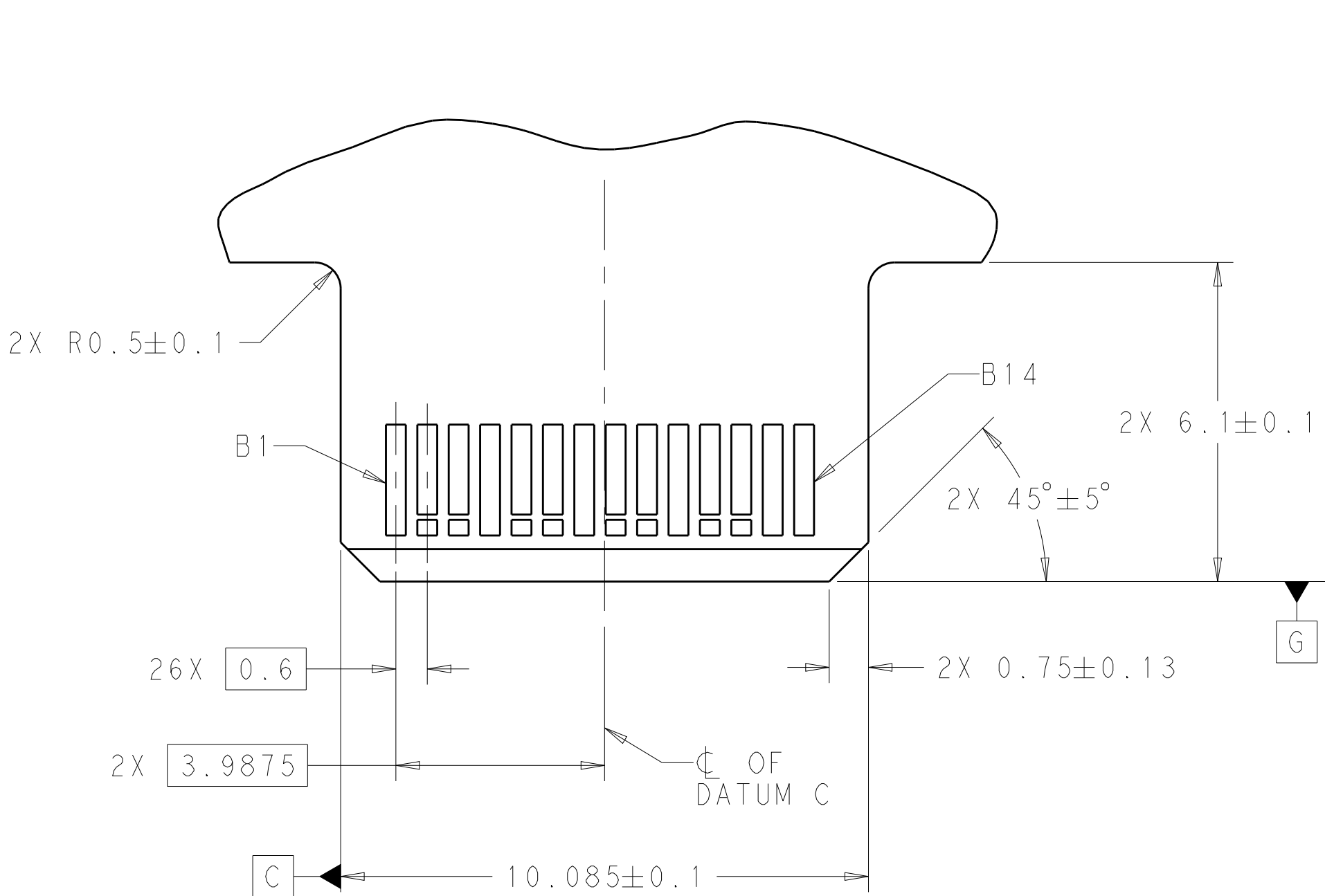
SIZE A1
CAGE CODE 00779
DRAWING NO. 2345808

RESTRICTED TO
-

SCALE 10:1
SHEET 1 OF 3
REV A

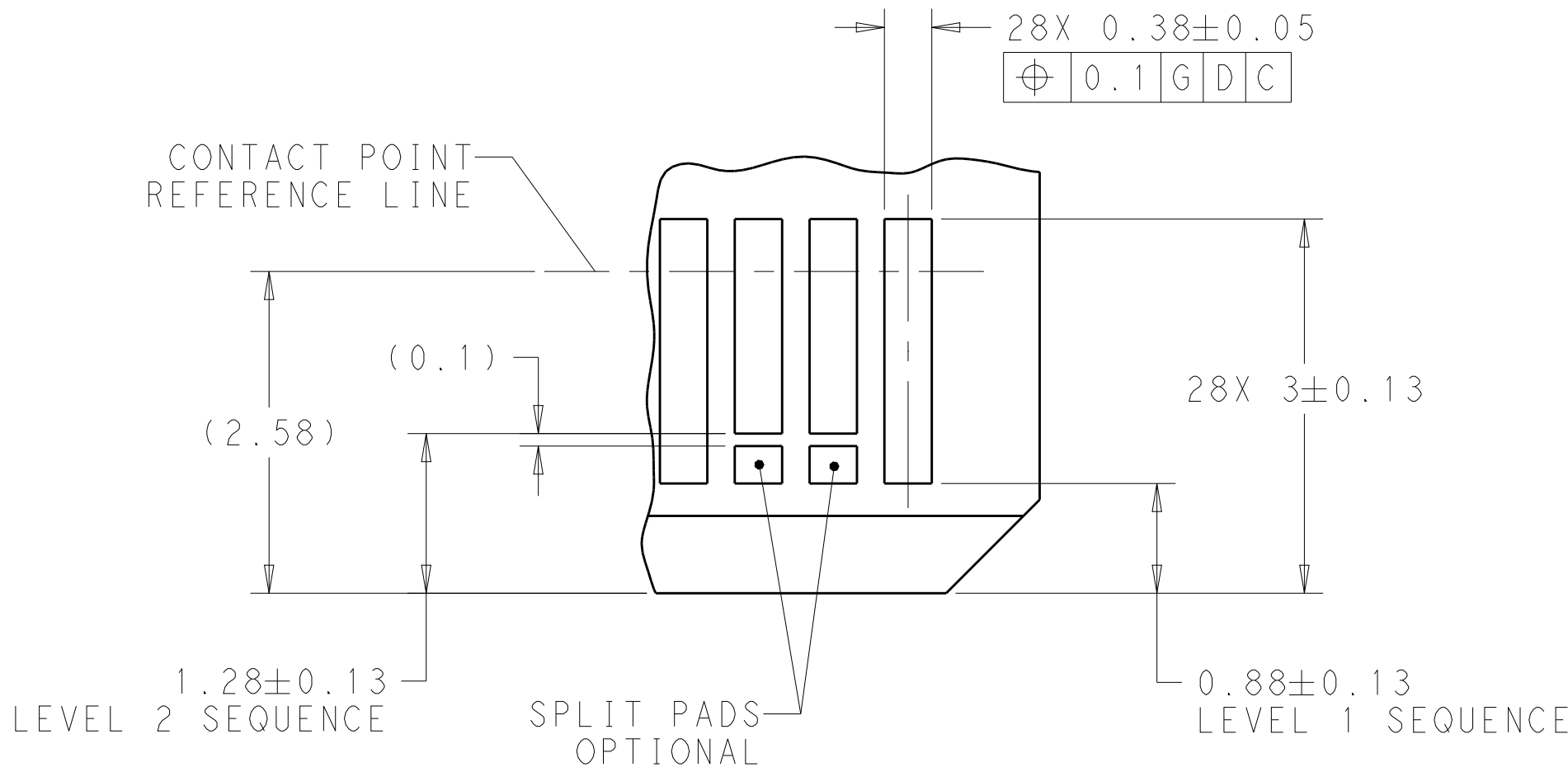


REVISIONS					
P	LTR	DESCRIPTION	DATE	DWN	APVD
-	-	SEE SHEET 1	-	-	-



RECOMMENDED PCB OUTLINE DIMENSIONS:
TOLERANCE VALUES ARE CRITICAL. PLEASE BE SURE TO DESIGNATE
TOLERANCES TO PCB SUPPLIER TO ENSURE OPTIMIZED FUNCTIONALITY.

CONTACT NUMBER	SIDE A	SIDE B
1	GROUND	GROUND
2	SIGNAL	SIGNAL
3	SIGNAL	SIGNAL
4	GROUND	GROUND
5	SIGNAL	SIGNAL
6	SIGNAL	SIGNAL
7	GROUND	GROUND
8	SIGNAL	SIGNAL
9	SIGNAL	SIGNAL
10	GROUND	GROUND
11	SIGNAL	SIGNAL
12	SIGNAL	SIGNAL
13	GROUND	GROUND
14	GROUND	GROUND



DETAIL J
SCALE 20:1

CONNECTOR CONTACT IDENTIFICATION 5/6

THIS DRAWING IS A CONTROLLED DOCUMENT.		DWN M. SHIRK 25OCT2018	TE Connectivity	
DIMENSIONS:		CHK D. HARMON 25OCT2018		
mm	TOLERANCES UNLESS OTHERWISE SPECIFIED:	APVD D. HARMON 25OCT2018	NAME RECEPTACLE ASSEMBLY, RIGHT ANGLE, 28 POSN, SLIVER 2.0	
	0 PLC	PRODUCT SPEC	SIZE	
	1 PLC	108-130021	CAGE CODE	
	2 PLC	APPLICATION SPEC	DRAWING NO	
	3 PLC	114-130015	RESTRICTED TO	
	4 PLC	WEIGHT	A100779C=2345808	
	ANGLES	-	SCALE 10:1	
MATERIAL		CUSTOMER DRAWING	SHEET 3 OF 3	
			REV A	