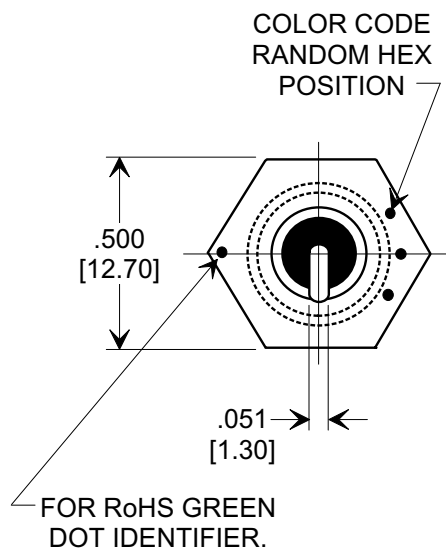
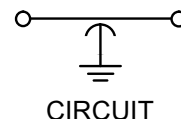
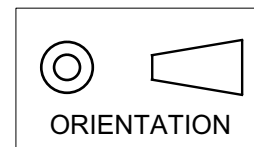


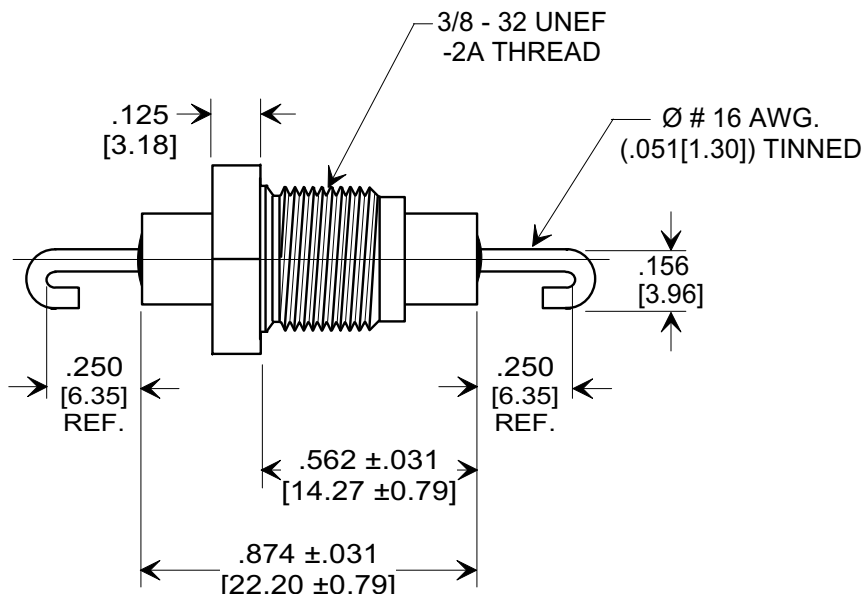
This drawing is the property of Tusonix, Inc., and may not be used, reproduced, published or disclosed to others without expressed authorization by Tusonix Inc.

Electrical Testing
per Tusonix standard
test plans and Mil-Std-202
Test Methods.

MARKETING SALES DRAWING DIMENSIONS IN INCHES - DO NOT SCALE THIS DRAWING DIMENSIONS IN METRIC - []



NOTE:
LEAD ORIENTATION
TO HEX NUT REQ'D.



NOTES:

- TUSONIX STANDARD PART NUMBER: 2432-032-X5U0-402M.
TUSONIX RoHS COMPLIANT PART NUMBER: 2432-032-X5U0-402M LF.
CUSTOMER MUST SPECIFY STANDARD OR RoHS PART NUMBER WHEN ORDERING.
- MATERIALS: SILVER PLATED BUSHING, LEAD, AND MOUNTING HARDWARE.
- PART MARKING: 3 DOT COLOR CODE; STANDARD PART: COLORS PER VARIATION.
RoHS PART: 3 DOT COLOR CODE PER VARIATION PLUS ADDITIONAL GREEN INK DOT OPPOSITE ON TOP OF HEX.
- SUPPLIED WITH HEX NUT AND LOCK WASHER.
- MAXIMUM RECOMMENDED MOUNTING TORQUE, 9.0 lb-in [1.02 Nm]

SPECIFICATIONS

TUSONIX PART NO.	2432-032-X5U0-402M
Capacitance:	4000 pF
Tolerance:	± 20 %
Temp. Coefficient:	X5U
Operating Temp.:	-55°C TO 85°C
Working Voltage:	2000 VDC
To Tusonix Spec Unless Stated Otherwise	

REVISION RECORD Original Release C.O. 5871 REV'D. F.G. 04-30-91 5901 RDN TO COMP FMT. S.M. 07-18-00 20000717-5-02 ADDED NOTES & GREEN DOT. S.M. 05-02-06 20060501-1-03	--TOLERANCES-- Unless Otherwise Specified		Title HIGH VOLTAGE FEED - THRU CAPACITOR	
	DECIMAL ± .015 [0.38]		Drawn S.M. 07-13-00 Scale 2 X	
	ANGLES ±		Approved T.C. 07-13-00	
	TUSONIX TUCSON, ARIZONA		A 2432-032-X5U0-402M	