

## RIGHT ANGLE PCB RECEPTACLES (MALE CENTER CONTACT)

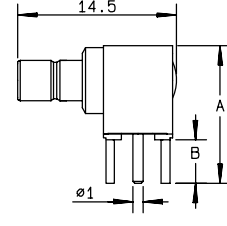
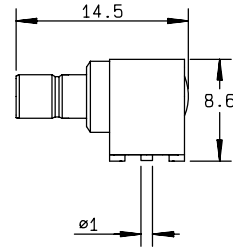
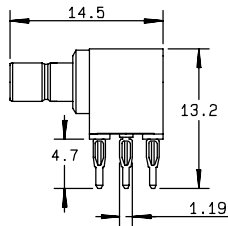
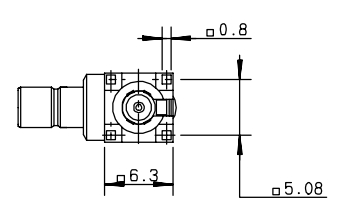
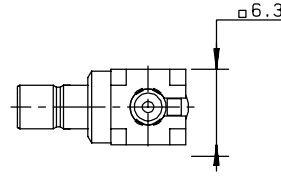
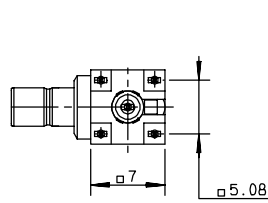


Fig. 1

Fig. 2

Fig. 3

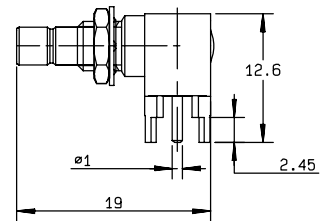
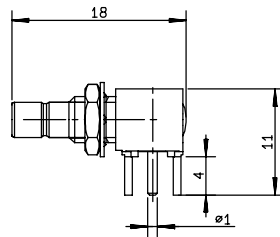
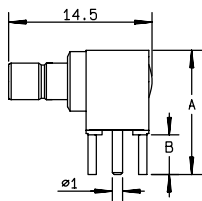
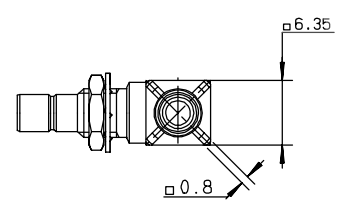
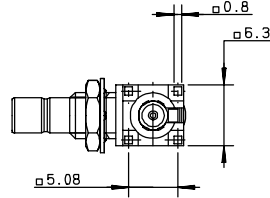
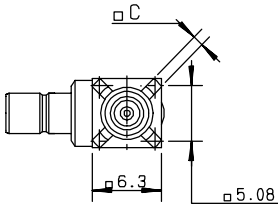


Fig. 4

Fig. 5

Fig. 6

part number	fig.	dimensions			captive center contact	assembly	panel	finish	note
		A	B	C					
R114 661 020	1				yes	M15	P02	Nickel	Press fit pins
R114 664 000	2				yes	M12		Gold	SMT
R114 664 100	2				yes	M12		Gold	SMT / packaging 100 reel
R114 664 120	2				yes	M12		Gold	SMT / packaging 500 reel
R114 665 000	3	12.6	4		yes		P03	Gold	
R114 665 020	3	12.6	4		yes		P03	Nickel	
R114 665 040*●	4	12.6	2.45	0.8	yes		P03	Gold	
R114 665 104	3	11.6	3		yes		P03	Ni+tin lead	
R114 665 110	3	11.6	3		yes		P03	Nickel	
R114 673 020*●	5				yes		P03	Nickel	rear mount
R114 673 120*●	6				yes		P03	Gold	rear mount

● upon request

\* packaging: unit