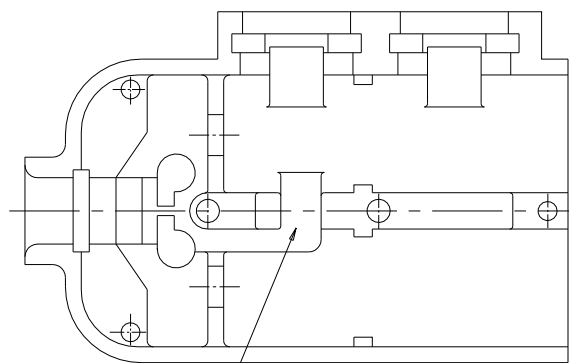
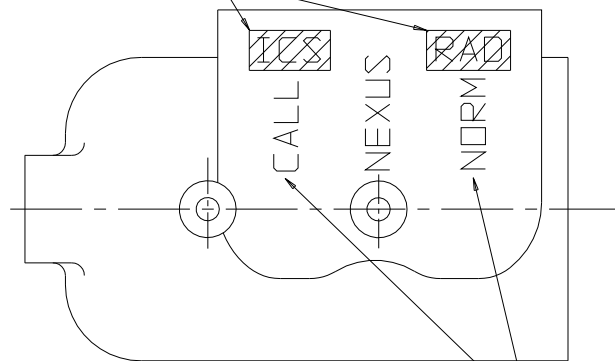


VIEW WITH HALF SHELL REMOVED



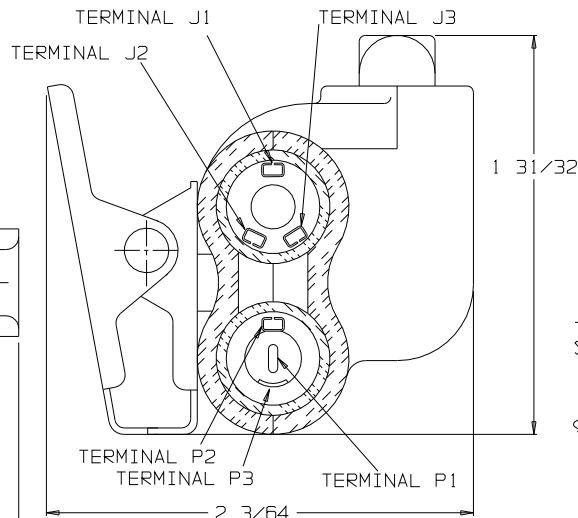
SEE NOTE 1

SHELL, HALF TJSS-106-2

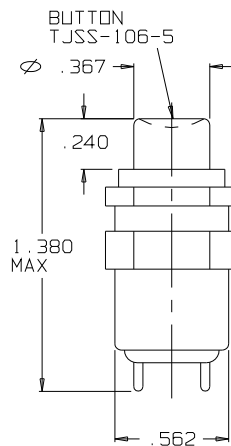
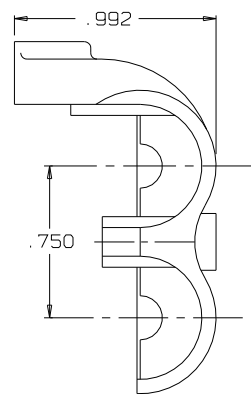


SHELL, HALF TJSS-106-1

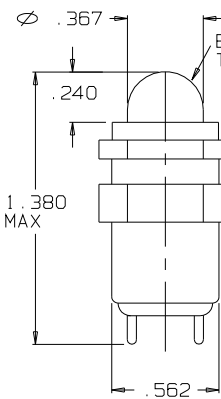
SEE NOTE 2



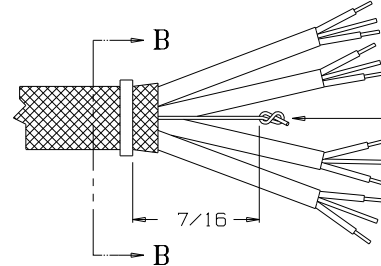
SECTION A-A



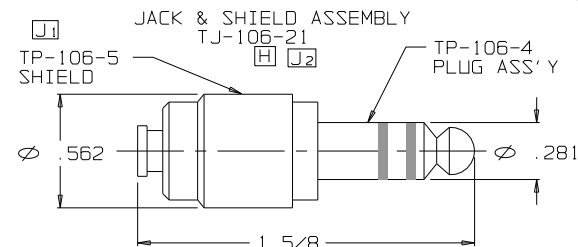
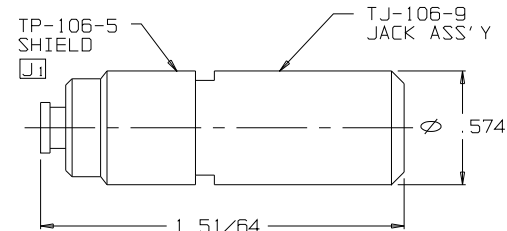
SWITCH  
NX301LB1B



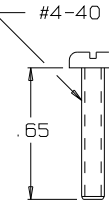
SWITCH  
SPND



## C TJSS-106A

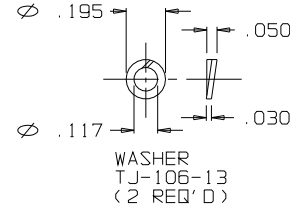


PLUG & SHIELD ASSEMBLY  
TP-106-10

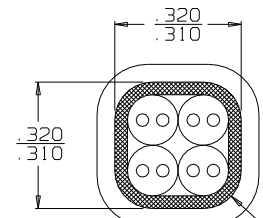


SCREW  
TJS-106-19

CLIP ASSY  
TJS-104-3A

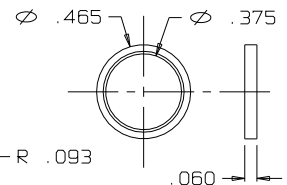


WASHER  
TJ-106-13  
(2 REQ'D)



SECTION B-B

STRAIN RELIEF  
CLAMP TJSS-106-6  
AFTER CRIMPING  
SCALE 4:1



RING, STRAIN RELIEF  
TJSS-106-6

NOTES:  
1) FILL DEPRESSED LETTERING "ICS" & "RAD" USING BLACK INK.  
2) ENGRAVE LETTERING "CALL" & "NORM" LOCATED APPROX AS SHOWN USING .125 HIGH CHARACTER, .007/.010 DEEP. LETTERING SHALL BE FILLED WHITE.

OWN. BY M. N. F.	DATE 2/19/94	MATERIAL	FINISH
CHECKED BY L. SMITH	DATE 3/14/96	WEIGHT	SCALE 2:1
APPR. BY L. SMITH	DATE 3/14/96	TITLE JACK-TELEPHONE-BIAxIAL SHIELDED (6) CONDUCTOR WITH TWO SWITCHES	SIZE DWG. NO.
UNLESS OTHERWISE SPECIFIED DIMENSIONS ARE IN INCHES TOLERANCES ON FRACTIONS DECIMALS ANGLES	DO NOT SCALE DWG.	SHEET 1 OF 1	C TJSS-106A

THIS DOCUMENT CONTAINS PROPRIETARY INFORMATION OF NEXUS, INCORPORATED AND SUCH INFORMATION MAY NOT BE DISCLOSED TO OTHERS FOR ANY PURPOSE OR USED FOR ANY PURPOSE WITHOUT THE WRITTEN CONSENT OF NEXUS.