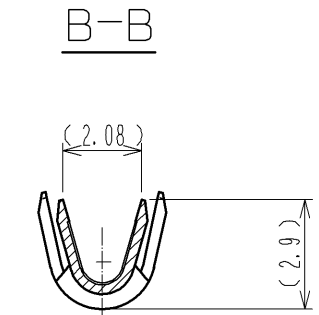
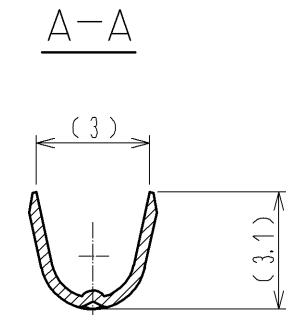
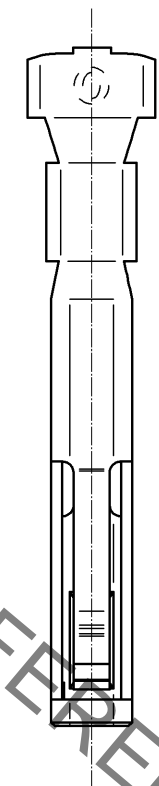
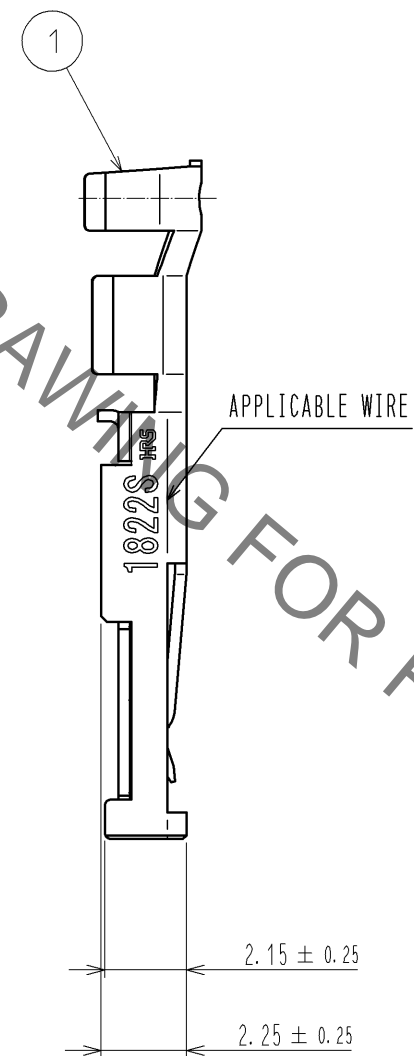
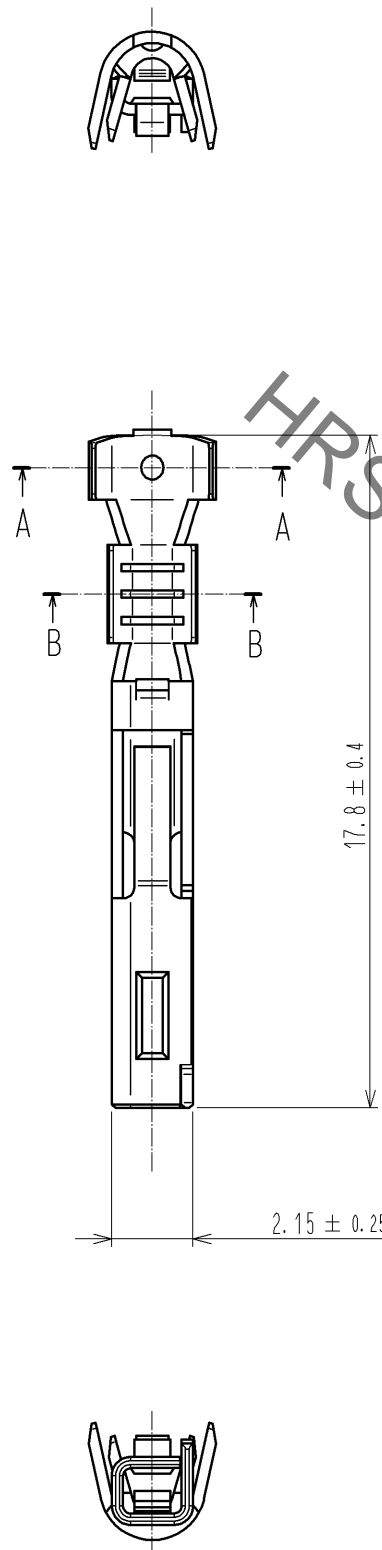
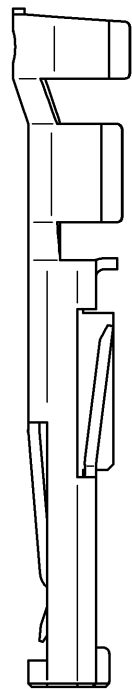


Jan.1.2022 Copyright 2022 HIROSE ELECTRIC CO., LTD. All Rights Reserved.
In case of consideration for using Automotive equipment / device which demand high reliability, kindly contact our sales window correspondents.



- NOTES 1. APPLICABLE WIRE IS AWG #17~#22. (UL1007 : AWG #18~#22)
INSURATION DIAMETER ϕ 2.25mm MAX.
2. APPLICABLE CRIMPING MACHINE AND CRIMPING CONDITIONS (CRIMP HEIGHT etc.)
WILL BE SPECIFIED ACCORDING TO AWG # OR WIRE APPLIED.
3. ONE PACKAGE CONSISTS OF 100 PCS.
4. REFER TO ETAD-E2961 FOR INCORPORABLE CONNECTOR PARTS AND APPLICABLE CONNECTOR.
5. REFER TO ATAI-E3024 FOR CRIMP QUALITY STANDARDS.

				1	COPPER ALLOY	CONTACT AREA : GOLD PLATING 0.2 μ m min TERMINAL AREA : TIN PLATING 1 μ m min UNDER PLATING : NICKEL PLATING 0.5 μ m min
NO.	MATERIAL	FINISH . REMARKS	NO.	MATERIAL	FINISH . REMARKS	
UNITS mm		SCALE 5 : 1	COUNT 1	DESCRIPTION OF REVISIONS DIS-E-004910	DESIGNED TY. MIURA	CHECKED NM. NISHIMATSU
HIROSE ELECTRIC CO., LTD.		APPROVED : RI. TAKAYASU	12.12.11	DRAWING NO.	EDC3-128197-00	
		CHECKED : AH. KODAMA	12.12.11	PART NO.	PQ50S-1822SCA	
		DESIGNED : TY. MIURA	12.12.10	CODE NO.	CL236-2050-6-00	
		DRAWN : TY. MIURA	12.12.10		1	