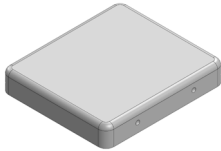
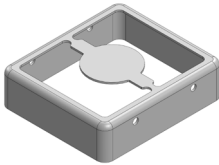
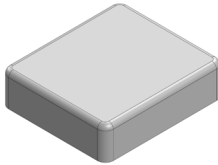


MS207-10*

DRAWN-SEAMLESS EMI/RFI SHIELD

*OPTIONAL SHIELD CONFIGURATIONS

		
2-PIECE SHIELD COVER	2-PIECE SHIELD FRAME	1-PIECE SHIELD

ITEM P/N	ITEM DESCRIPTION	MATERIAL
MS207-10C	2-PIECE EMI/RFI SHIELD COVER	TIN-PLATED STEEL
MS207-10F	2-PIECE EMI/RFI SHIELD FRAME	TIN-PLATED STEEL
MS207-10S	1-PIECE EMI/RFI SHIELD	TIN-PLATED STEEL
MS207-10C-NS	2-PIECE EMI/RFI SHIELD COVER	NICKEL-SILVER
MS207-10F-NS	2-PIECE EMI/RFI SHIELD FRAME	NICKEL-SILVER
MS207-10S-NS	1-PIECE EMI/RFI SHIELD	NICKEL-SILVER

TIN-PLATED STEEL: CRS ELECTROLYTIC TINPLATE

NICKEL-SILVER: UNS C77000 / UNS C73500



SHIELD CONFIGURATION:

MATERIAL:

© MASACH TECH LTD.
22 HAGANAN, MODIIN 7169513 ISRAEL
T: (+972) 8-9754681 / F: (+972) 8-9754682
info@masach.com / www.masach.com

SHIELD TYPE:

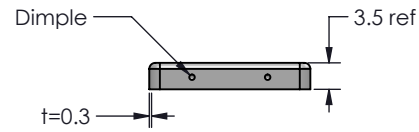
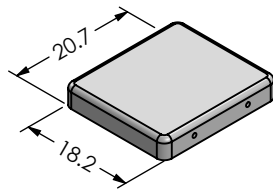


1 INCH 10 MM

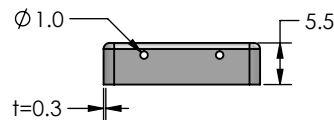
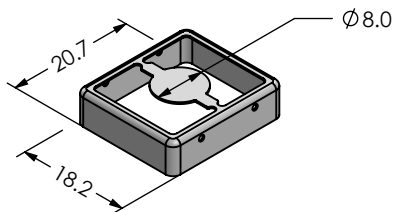
MMGS / PRINT 1:1 / A4

This product has been designed and manufactured by © Masach Tech Ltd. The use of this product in any type of electronic device or application is not under Masach Tech Ltd. liability.

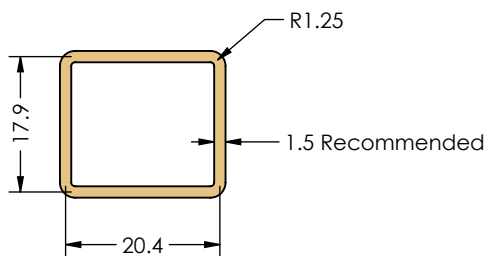
MS207-10C
(Internal Dimensions)



MS207-10F
(External Dimensions)



FOOT-PRINT 1:1
(Symmetry)



© MASACH TECH LTD.
22 HAGANAN, MODIIN 7169513 ISRAEL
T: (+972) 8-9754681 / F: (+972) 8-9754682
info@masach.com / www.masach.com

SHIELD CONFIGURATION:

2-PIECE EM/RFI SHIELD

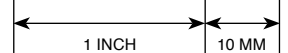
MATERIAL:

TIN-PLATED STEEL ⁽¹⁾

NOTE: (1) CRS ELECTROLYTIC TINPLATE (2) GENERAL TOLERANCE (+/-) 0.2MM

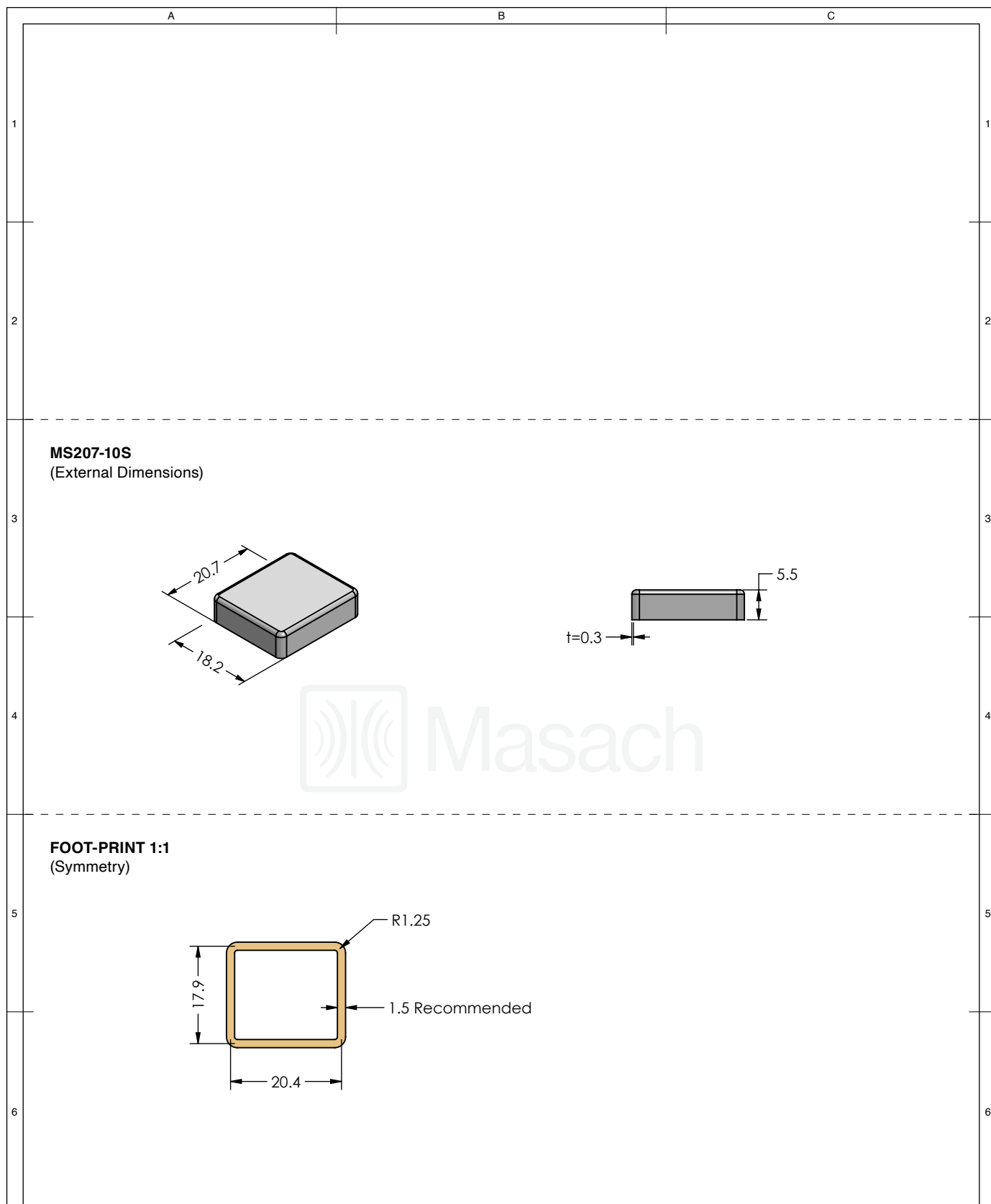
SHIELD TYPE:




DRAWN-SEAMLESS EM/RFI SHIELD



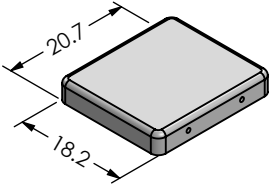
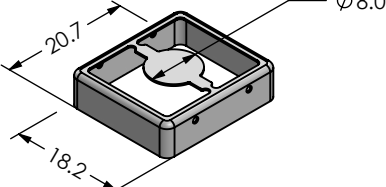
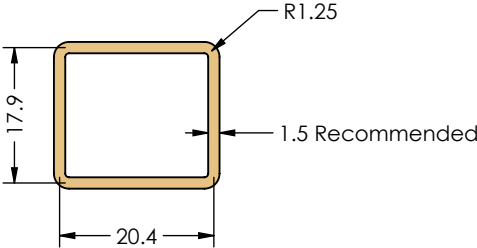
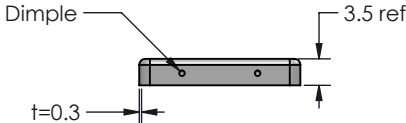
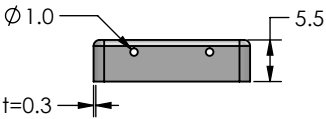
MMGS / PRINT 1:1 / A4

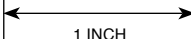
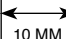
This product has been designed and manufactured by © Masach Tech Ltd. The use of this product in any type of electronic device or application is not under Masach Tech Ltd. liability.



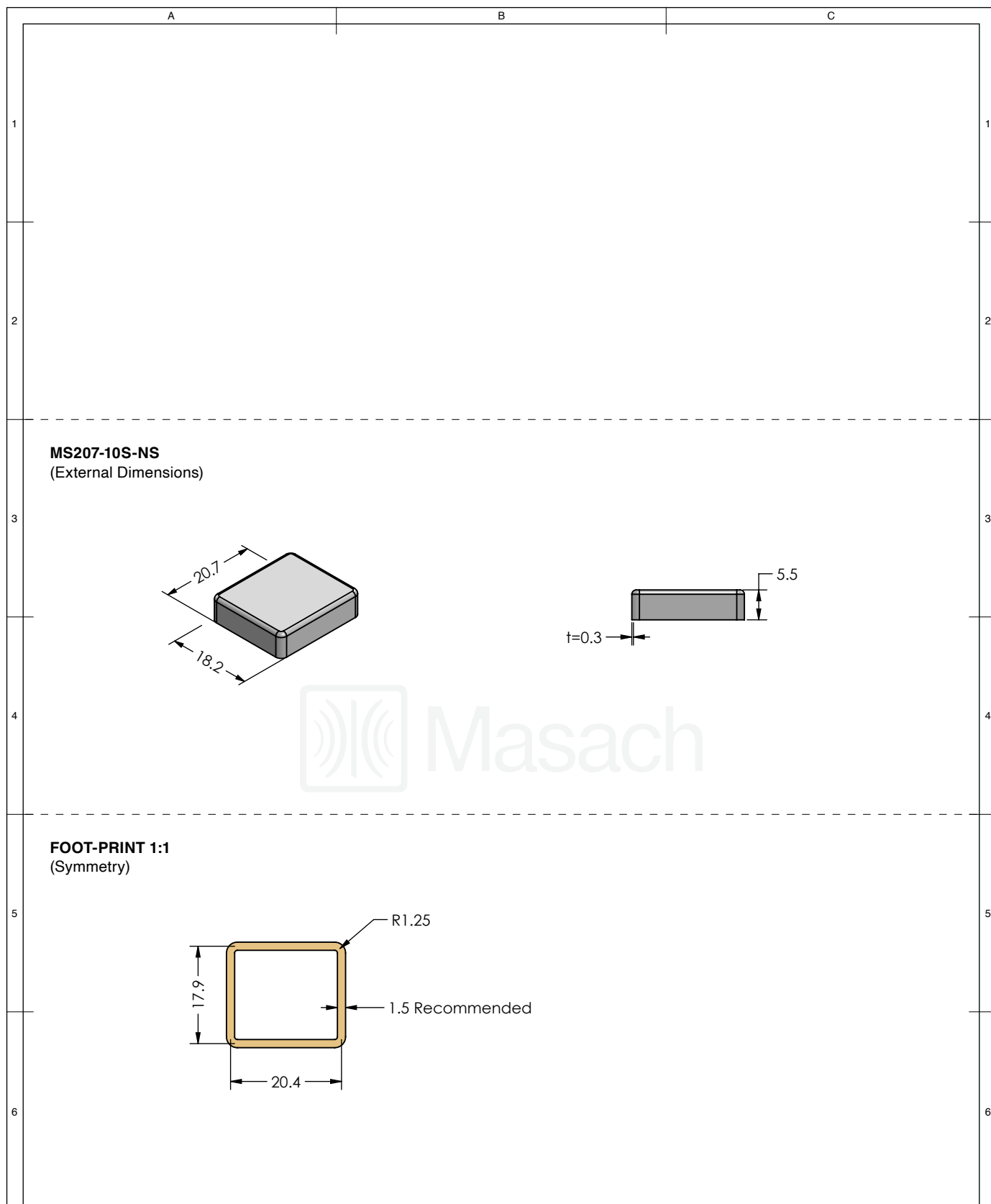
<div> Masach™</div>	SHIELD CONFIGURATION:		MATERIAL:					
	1-PIECE EMI/RFI SHIELD		TIN-PLATED STEEL ⁽¹⁾					
	NOTE: (1) CRS ELECTROLYTIC TINPLATE (2) GENERAL TOLERANCE (+/-) 0.2MM							
© MASACH TECH LTD. 22 HAGANAN, MODIIN 7169513 ISRAEL T: (+972) 8-9754681 / F: (+972) 8-9754682 info@masach.com / www.masach.com	SHIELD TYPE:		<div><div></div><div></div></div>		<div><div></div><div>1 INCH</div><div></div></div>		<div><div></div><div>10 MM</div><div></div></div>	
	DRAWN-SEAMLESS EMI/RFI SHIELD				MMGS / PRINT 1:1 / A4			

This product has been designed and manufactured by © Masach Tech Ltd. The use of this product in any type of electronic device or application is not under Masach Tech Ltd. liability.

1	<p>MS207-10C-NS (Internal Dimensions)</p> 	<p>MS207-10F-NS (External Dimensions)</p> 	<p>FOOT-PRINT 1:1 (Symmetry)</p> 	1
2				2
3				3
4				4
5				5
6				6

<div></div>	SHIELD CONFIGURATION:		MATERIAL:	
	2-PIECE EMI/RFI SHIELD		NICKEL-SILVER ⁽¹⁾	
	NOTE: (1) UNS C77000 / UNS C73500 (2) GENERAL TOLERANCE (+/-) 0.2MM			
© MASACH TECH LTD. 22 HAGANAN, MODIIN 7169513 ISRAEL T: (+972) 8-9754681 / F: (+972) 8-9754682 info@masach.com / www.masach.com	SHIELD TYPE:	<div></div>	<div></div>	<div></div>
	DRAWN-SEAMLESS EMI/RFI SHIELD		MMGS / PRINT 1:1 / A4	

This product has been designed and manufactured by © Masach Tech Ltd. The use of this product in any type of electronic device or application is not under Masach Tech Ltd. liability.

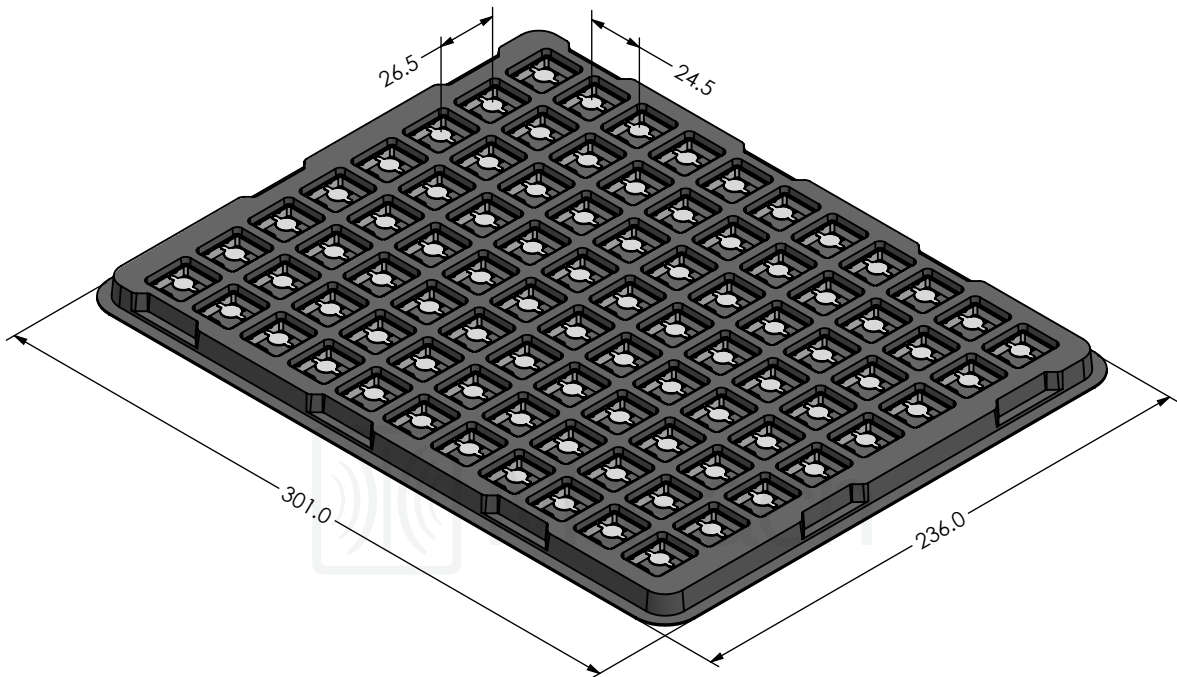


<div></div>	SHIELD CONFIGURATION:		MATERIAL:				
	1-PIECE EMI/RFI SHIELD		NICKEL-SILVER ⁽¹⁾				
	NOTE: (1) UNS C77000 / UNS C73500 (2) GENERAL TOLERANCE (+/-) 0.2MM						
<div>© MASACH TECH LTD. 22 HAGANAN, MODIIN 7169513 ISRAEL T: (+972) 8-9754681 / F: (+972) 8-9754682 info@masach.com / www.masach.com</div>	SHIELD TYPE:		<div><div></div><div></div></div>	<div><div></div><div>1 INCH</div><div></div></div>		<div><div></div><div>10 MM</div><div></div></div>	
	DRAWN-SEAMLESS EMI/RFI SHIELD			MMGS / PRINT 1:1 / A4			

This product has been designed and manufactured by © Masach Tech Ltd. The use of this product in any type of electronic device or application is not under Masach Tech Ltd. liability.

MS207-10* SMT/SMD PACKING TRAY

* COMPATIBLE TO ALL SHIELD CONFIGURATIONS



© MASACH TECH LTD.
22 HAGANAN, MODIIN 7169513 ISRAEL
T: (+972) 8-9754681 / F: (+972) 8-9754682
info@masach.com / www.masach.com

SHIELD CONFIGURATION:

MATERIAL:

SHIELD TYPE:



1 INCH

10 MM

MMGS / PRINT 1:1 / A4

This product has been designed and manufactured by © Masach Tech Ltd. The use of this product in any type of electronic device or application is not under Masach Tech Ltd. liability.