



Copyright FCI.

PRODUCT DESCRIPTION CODE :

10131933-YXXXLF

- RoHS COMPATIBLE, SEE NOTE 3
- PACKAGING : "A" TAPE & REEL  
"U" TUBE
- TOTAL NUMBER OF POSITIONS 04 TO 50

PLATING :

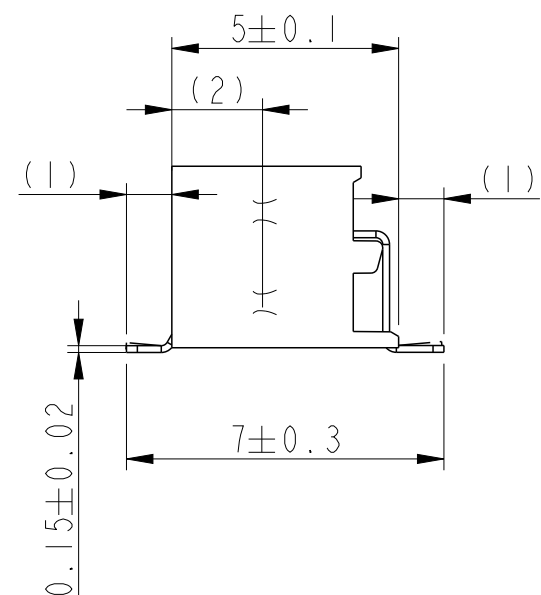
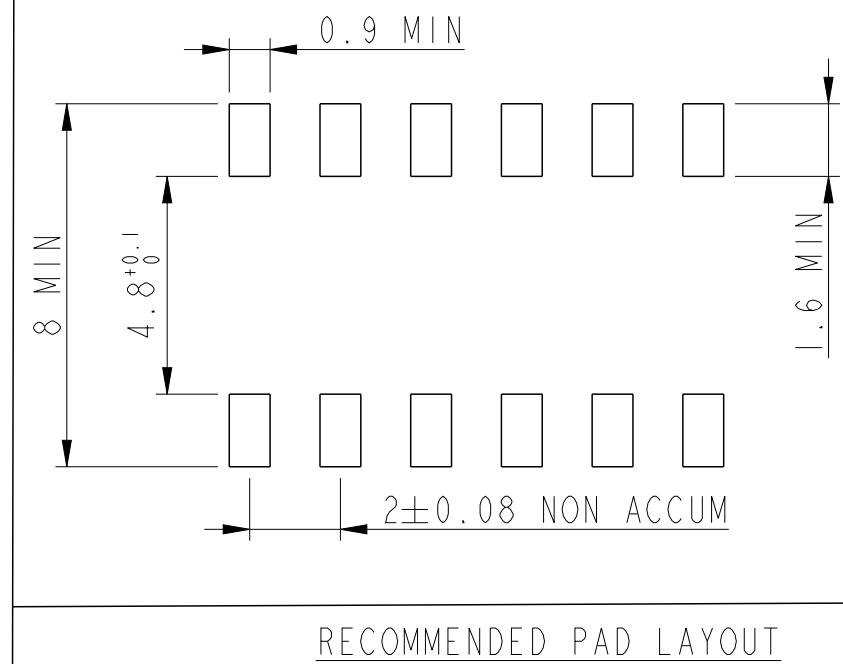
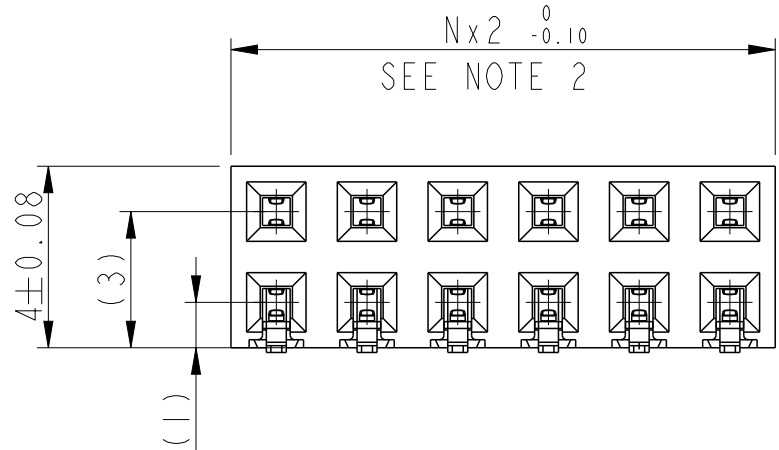
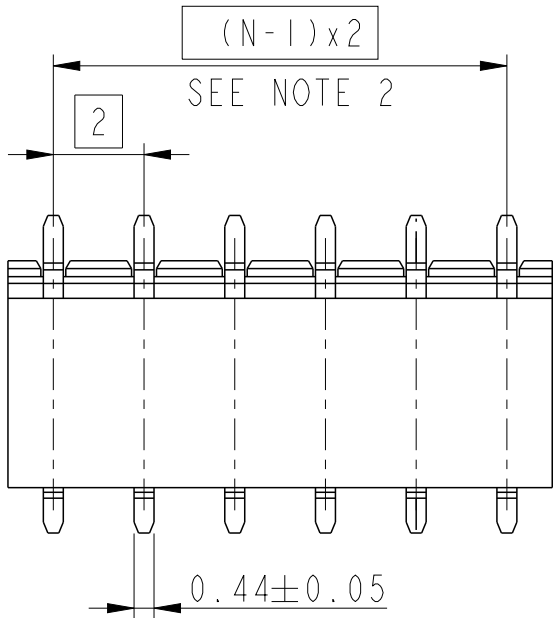
- 1 = 0.76 µm GOLD ON CONTACT AREA  
2.54µm MIN MATTE TIN ON TAIL
- 2 = 0.38µm GOLD ON CONTACT AREA  
2.54µm MIN MATTE TIN ON TAIL
- 3 = 0.20µm GOLD ON CONTACT AREA  
2.54µm MIN MATTE TIN ON TAIL
- 4 = 0.76 µm GXT ON CONTACT AREA  
2.54µm MIN MATTE TIN ON TAIL
- 5 = 0.38µm GXT ON CONTACT AREA  
2.54µm MIN MATTE TIN ON TAIL
- 6 = 0.20µm GXT ON CONTACT AREA  
2.54µm MIN MATTE TIN ON TAIL
- 9 = 2.54µm MIN MATTE TIN FULL PLATED
- 1.27µm NICKEL MIN UNDERLAYER

NOTES :

- 1 - MATERIAL  
HOUSING : HIGH TEMPERATURE GLASS FILLED FLAME  
RETARDANT PER UL 94 V-0  
TERMINAL: COPPER ALLOY

- 2- TO DETERMINE DIMENSIONS :  
N = NUMBER OF POSITIONS PER ROW  
EXAMPLE : 8 POS N x 2 = 16mm  
UP TO N = 24 TOLERANCE : 0  
-0.10  
FROM N = 26 TOLERANCE : 0.05  
-0.10

- 3 - RoHS COMPATIBLE PRODUCT SPECIFICATIONS
  - a - PLATING :  
"LF" MEANS THE PRODUCT IS LEAD-FREE, 2µm MINIMUM MATTE TIN OVER 1.27µm MINIMUM NICKEL UNDERPLATE
  - b - MANUFACTURING PROCESS COMPATIBILITY  
THE HOUSING WILL WITHSTAND EXPOSURE TO 260°C PEAK TEMPERATURE FOR 30 SECONDS MAX IN A CONVECTION, INFRA-RED OR VAPOR PHASE OR REFLOW OVEN
  - c - LABELLING :  
MEETS PACKAGING SPECS AS PER GS-14-920
  - d - LEGAL STATEMENT : SEE GS-47-0004



PRELIMINARY

spec ref		GS-12-1326		dr		Cyril Jeune	2014/12/02	<div>projection</div> <div></div>	<div>mm</div> <div></div>	size	A3	scale	6:1	
tolerance std	TOLERANCES UNLESS OTHERWISE SPECIFIED			eng		Cyril Jeune	2015/11/18			ecn no				-
				chr		-	-							
				appr		-	-			product family				-
surface	<div>✓</div>	linear	0.X	±	<div></div>	title	MINITEK RECEPTACLE 2MM			dwg no	10131933		rev	2
			0.XX	±										
			0.XXX	±										
	ISO 1302	angular	0°	±°	www.fci.com	cat. no.	-	Product - Customer Drw			sheet 1 of 1			