

## DESCRIPTION: POWER - RIGHT ANGLE - FEMALE - MACHINED

## SPECIFICATIONS:

## ELECTRICAL:

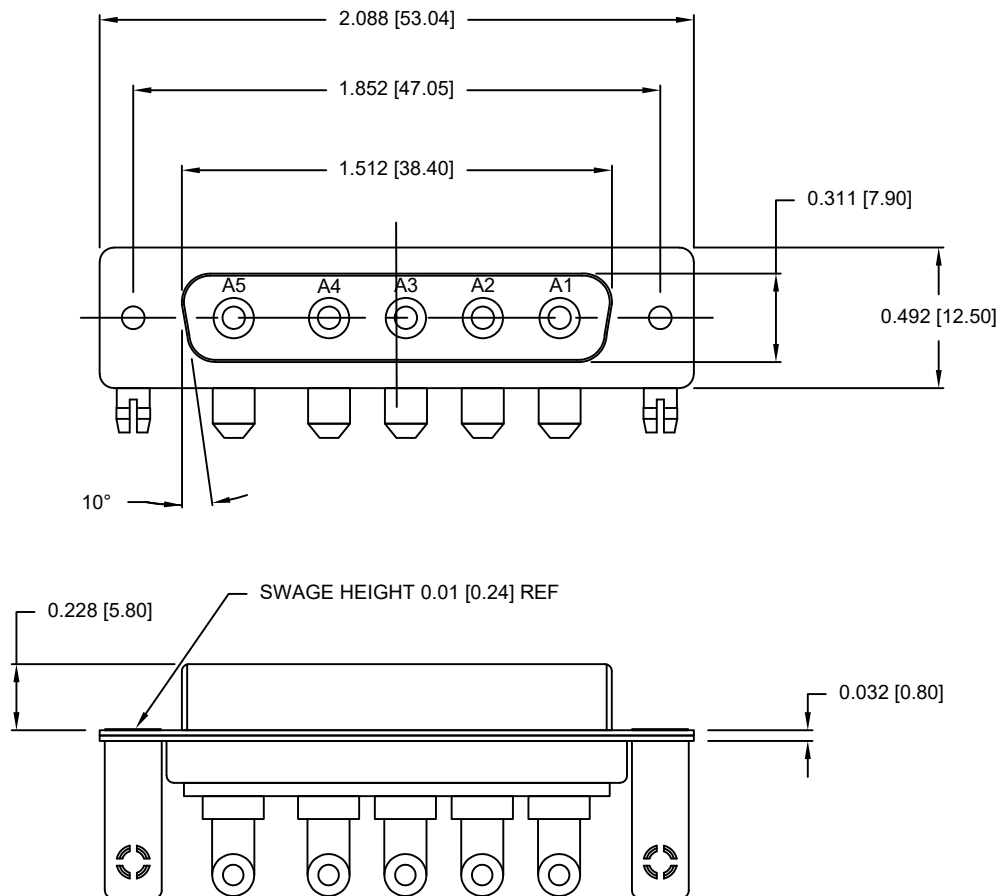
INSULATOR RESISTANCE:	5 GOhms MIN.
WORKING VOLTAGE:	250V
OPERATING TEMPERATURE:	-55°C TO +125°C
POWER CONTACT RESISTANCE:	2.0 mOhms MAX.
POWER CONTACT AMPERAGE:	SEE P/N KEY

## MECHANICAL:

CONTACT INSERTION FORCE:	4.5 Kg MAX.
CONTACT SEPARATION FORCE:	0.3 Kg MIN.

## MATERIALS:

CONTACTS:	COPPER ALLOY, GOLD FLASH
INSULATOR:	PBT UL94V-0 RATED 230°C PROCESS TEMP.
SHELL:	NICKEL PLATED STEEL
BRACKET:	NICKEL PLATED STEEL
BOARD LOCK:	NICKEL PLATED BRASS



SEE SHEET 2  
FOR CONTACT & BRACKET DIMENSION DETAILS

684M5W5203LYYY

46 = 40 AMP POWER // #4-40 BRACKET // STANDARD PCB TAILS  
62 = 40 AMP POWER // #4-40 BRACKET // 2.22mm PCB TAILS

1 = GOLD FLASH

RoHS COMPLIANT



THESE DRAWINGS AND SPECIFICATIONS ARE THE PROPERTY OF NorComp AND SHALL NOT BE REPRODUCED, COPIED OR USED AS THE BASIS FOR THE MANUFACTURE OR SALE OF APPARATUS WITHOUT WRITTEN PERMISSION.

DRAWN:  
M. SIGMON

DATE:  
12/06/2013

UNITS = inches [mm]

DO NOT SCALE FROM DRAWING

NorComp

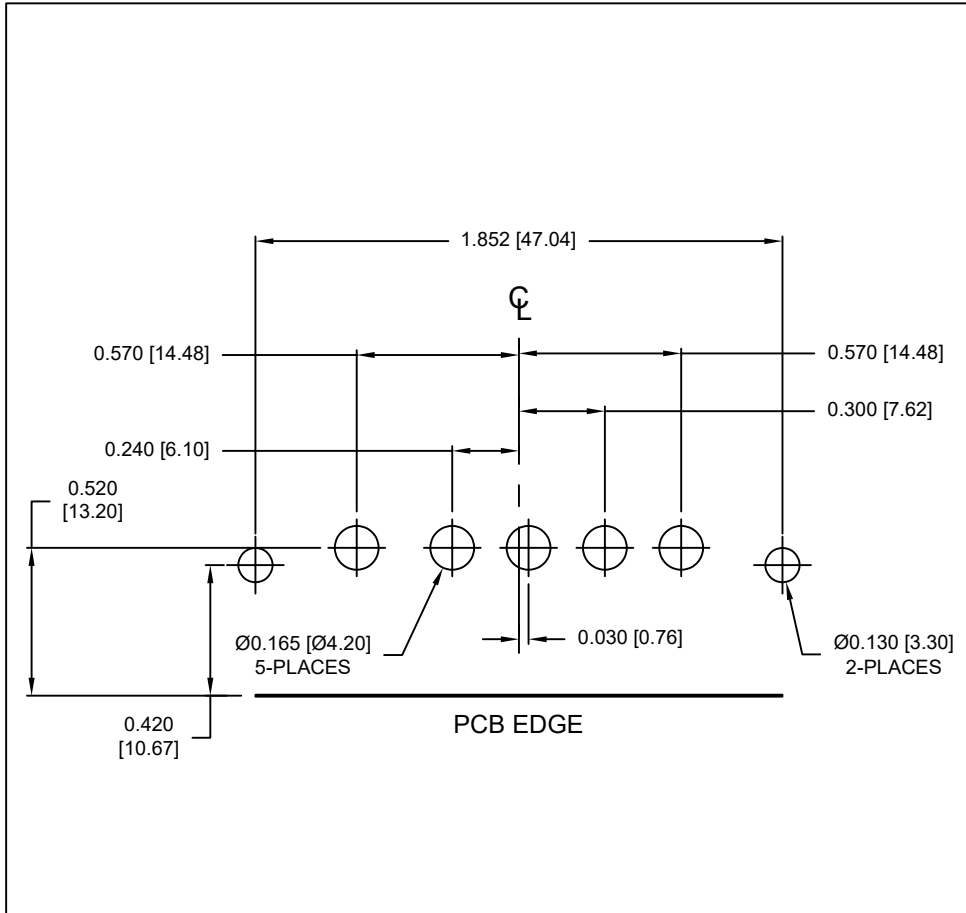
SCALE:  
NTS

SHEET OF  
1 2

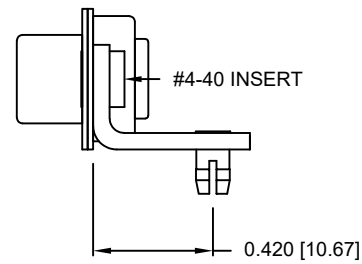
REV  
3

DWG NO.

684M5W5203L461

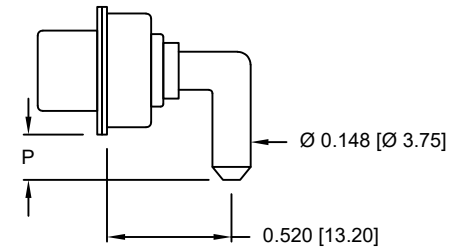


## RIGHT ANGLE BRACKET



DIMENSIONS(in/mm)	
OPTION	P
46	0.185
	4.70
62	0.087
	2.22

## POWER CONTACTS



## RoHS COMPLIANT

NC

THESE DRAWINGS AND SPECIFICATIONS ARE THE PROPERTY OF NorComp AND SHALL NOT BE REPRODUCED, COPIED OR USED AS THE BASIS FOR THE MANUFACTURE OR SALE OF APPARATUS WITHOUT WRITTEN PERMISSION.

DRAWN:  
M. SIGMON

DATE:  
12/06/2013

UNITS = inches [mm]

DO NOT SCALE FROM DRAWING

## *NorComp*

SCALE:  
NTS

SHEET 2 OF 2

REV  
3

DWG NO.

684M5W5203L461