

PLASTIC: ABS UL 94-HB RATED  
JACKSCREWS: STEEL-BLACK OXIDE FINISH  
M3 HOODSCREWS: STEEL-BLACK OXIDE FINISH  
COMPRESSION INSERTS: ABS UL 94-HB RATED  
M3 NUTS: STEEL-BLACK OXIDE FINISH  
OPERATING TEMP: -30°C TO + 90°C

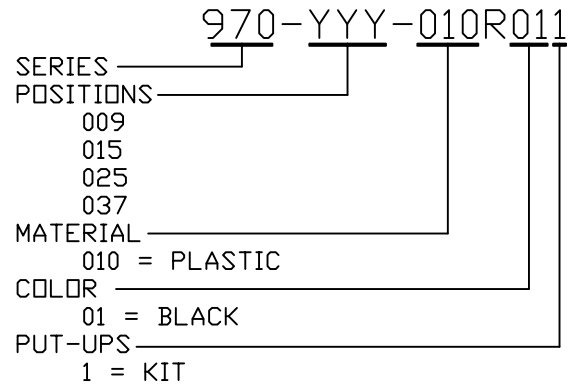
- BACKSHELL KIT INCLUDES:
- (2)BACKSHELL HALVES
  - (2)4-40 THUMBSCREWS
  - (2)HOUSING SCREWS & (2)NUTS
  - (1)SET OF COMPRESSION INSERTS-VARIOUS SIZES  
DIAMETERS:4mm(.157"),5mm(.197"),7mm(.276"),9mm(.351")

NOTE: 37 POSITION HAS (4) HOUSING SCREWS & (4)NUTS

\*\*NOTE: 3 in-lbs IS RECOMMEND TORQUE FOR HOUSING SCREWS

\* UNLESS OTHERWISE SPECIFIED TOLERANCES ON DECIMAL IS:

DIMENSIONS(mm/in)							
SIZE	A		B		C		D
	MM	(±0.50)	MM	(±0.50)	MM	(±0.50)	MM (±0.50)
	INCH	(±0.02)	INCH	(±0.02)	INCH	(±0.02)	INCH (±0.02)
9	MM	31.50	MM	24.99	MM	40.50	MM 15.00
	INCH	1.240	INCH	0.984	INCH	1.594	INCH 0.591
15	MM	40.00	MM	33.32	MM	40.50	MM 15.00
	INCH	1.575	INCH	1.312	INCH	1.594	INCH 0.591
25	MM	54.00	MM	47.04	MM	49.50	MM 15.00
	INCH	2.126	INCH	1.852	INCH	1.949	INCH 0.591
37	MM	70.50	MM	63.50	MM	54.50	MM 16.00
	INCH	2.776	INCH	2.500	INCH	2.146	INCH 0.630



RoHS COMPLIANT

THESE DRAWINGS AND SPECIFICATIONS ARE THE PROPERTY OF NorComp AND SHALL NOT BE REPRODUCED, COPIED OR USED AS THE BASIS FOR THE MANUFACTURE OR SALE OF APPARATUS WITHOUT WRITTEN PERMISSION.

DRAWN: PAM JENKINS

DATE: 06/09/2005

UNITS = "as specified"

DO NOT SCALE FROM DRAWING

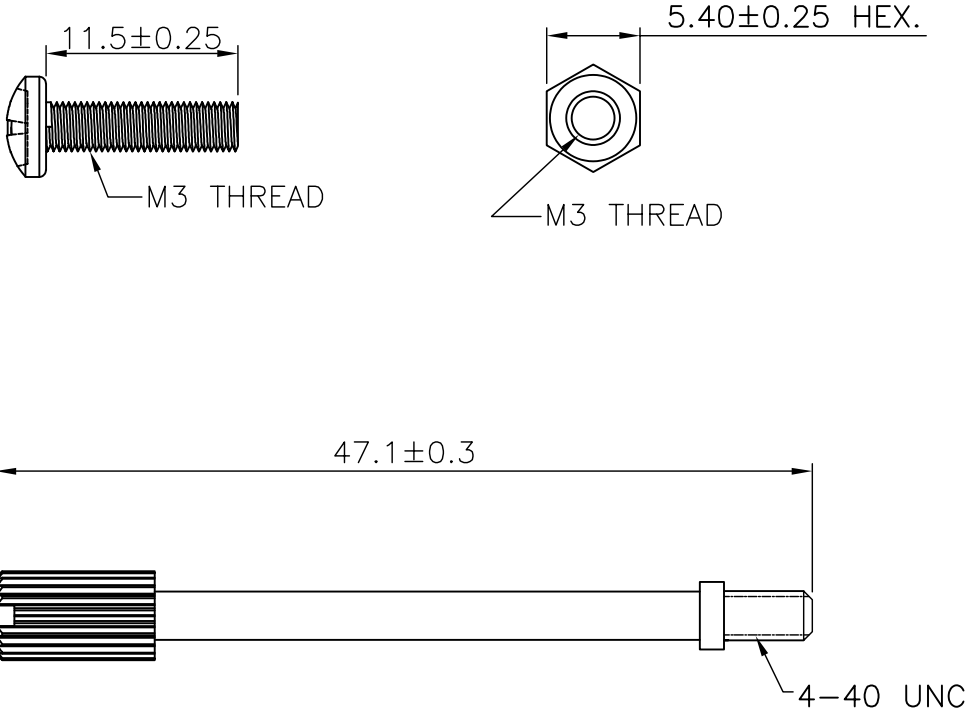
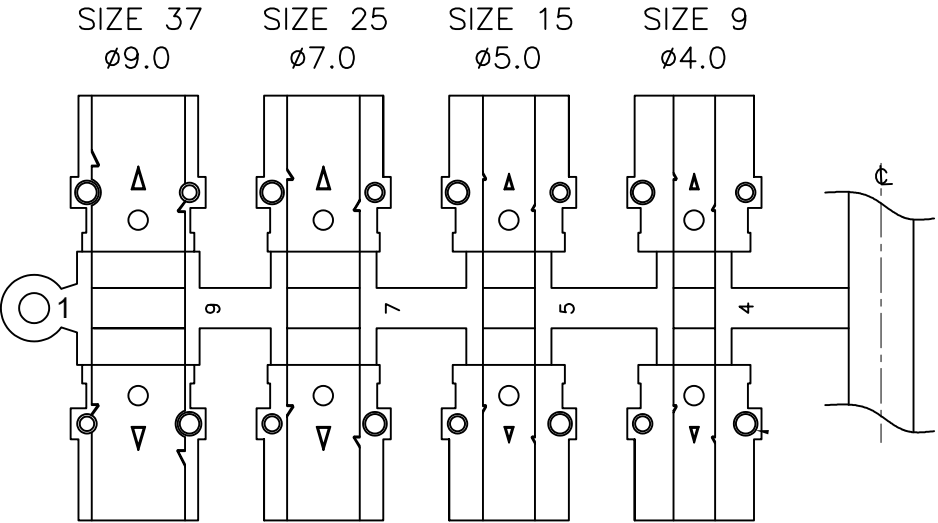
SCALE: NTS

DWG NO.

SHEET 1 OF 2

970-YYY-010R011

REV 12



RoHS COMPLIANT



THESE DRAWINGS AND SPECIFICATIONS ARE THE PROPERTY OF NorComp AND SHALL NOT BE REPRODUCED, COPIED OR USED AS THE BASIS FOR THE MANUFACTURE OR SALE OF APPARATUS WITHOUT WRITTEN PERMISSION.

DRAWN:  
PAM JENKINS

DATE:  
06/09/2005

UNITS = mm

DO NOT SCALE FROM DRAWING

NorComp

SCALE:  
NTS

SHEET 2 OF 2

REV 12

DWG NO. 970-YYY-010R011