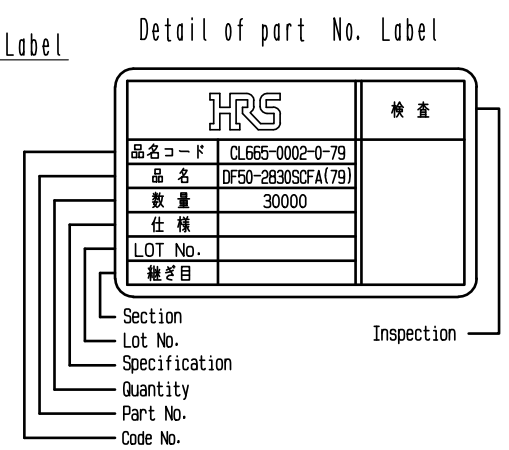
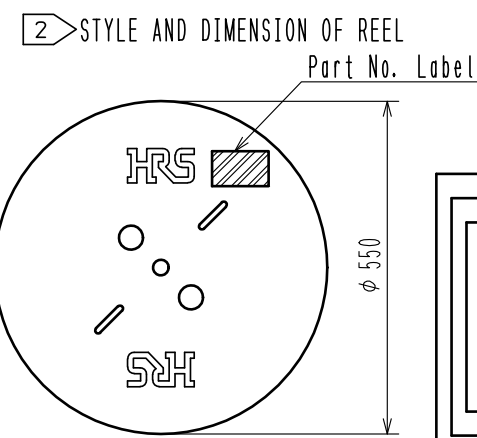


Applicable standard					
Rating	Operating temperature range	-35°C to + 85°C(Note 1)	Storage temperature range	-10°C to + 60°C(Note 3)	
	Operating humidity range	20% to + 80%(Note 2)	Storage humidity range	40% to + 70%(Note 3)	
	Voltage	100V AC/DC	Applicable socket	DF50#-*DS-1C(##)、DF50A-*S-1C(##)	
			Applicable connector	DF50-*DP-1V(##)、DF50-*DP-1H(##) DF50A-*P-1V(##)、DF50A-*P-1H(##)	
	Current	AWG#28 : 1.0A AWG#30 : 0.9A	Applicable cable	AWG#28-30	
Insulation diameter			φ 0.8-0.9mm		
Specifications					
Item	Test method		Requirements	QT	AT
Construction					
General examination	Visually and by measuring instrument.		According to drawing.	X	X
Marking	Confirmed visually.			X	X
Electric characteristics					
Contact Resistance	AC 20 mV Max 1mA (DC or 1000 Hz).		30mΩ MAX.	X	—
Mechanical characteristics					
Contact insertion and extraction forces	T=0.15±0.002 mm by steel gauge.		Insertion force 1 N MAX. Extraction force 0.08 N MIN.	X	—
Mechanical Operation	30 times insertion and extraction.		① Contact resistance: 50 mΩ MAX. ② No damage, crack or looseness of parts.	X	—
Vibration	Frequency 10 to 55 Hz, single amplitude 0.75 mm, at 10 cycles for each, for 3 directions.		① No electrical discontinuity of 1μs. ② No damage, crack or looseness of parts.	X	—
Shock	490 m/s ² duration of pulse 11 ms at 3 times for 3 directions.			X	—
Environmental characteristics					
Damp heat (Steady state)	Exposed at 40 ± 2 °c, 90 to 95 %, 96 h.		① Contact resistance: 50mΩ MAX. ② No damage, crack or looseness of parts.	X	—
Rapid change of temperature	Temperature -55°C→ +85°C Time 30min→ 30min Under 5 Cycles. (The transferring time of the tank is 2 to 3 min) (After leaving the room temperature for 1 to 2h.)			X	—
Remarks Note 1: Include the temperature rising by current. Note 2: No condensing Note 3: Apply to the condition of long term storage for unused products before mounted on PCB. After mounted on PCB, operation temperature and humidity range is applied for interim storage during transportation.					
	Count	Description of revisions	Designed	Checked	Date
			Approved	HS. OKAWA	18. 04. 19
			Checked	TS. FUKUSHIMA	18. 04. 19
			Designed	HT. SATO	18. 04. 19
			Drawn	HT. SATO	18. 04. 19
Unless otherwise specifid , refer to IEC 60512.					
Note QT:Qualification Test AT:Assurance Test X:Applicable Test			Drawing No.		ELC-320119-79-00
	Specification sheet		Part no.	DF50-2830SCFA (79)	
	Hirose electric co., Ltd.		Code no.	CL665-0002-0-79	 1/1



				1	PHOSPHOR BRONZE	CONTACT AREA : GOLD PLATING 0.76μm MIN CARRIER AREA : TIN PLATING 1μm MIN CRIMP BACK SURFACE AREA : TIN PLATING 1μm MIN UNDER PLATING : NICKEL PLATING 1.27μm MIN			
NO.	MATERIAL	FINISH . REMARKS			NO.	MATERIAL	FINISH . REMARKS		
UNITS mm		SCALE 20 : 1		COUNT	DESCRIPTION OF REVISIONS		DESIGNED	CHECKED	DATE
HIROSE ELECTRIC CO., LTD.		APPROVED	HS. OKAWA	18. 04. 19	DRAWING NO.		EDC-320119-79-00		
		CHECKED	TS. FUKUSHIMA	18. 04. 19	PART NO.		DF50-2830SCFA(79)		
		DESIGNED	HT. SATO	18. 04. 19	CODE NO.		CL665-0002-0-79		
		DRAWN	HT. SATO	18. 04. 19			1/1		