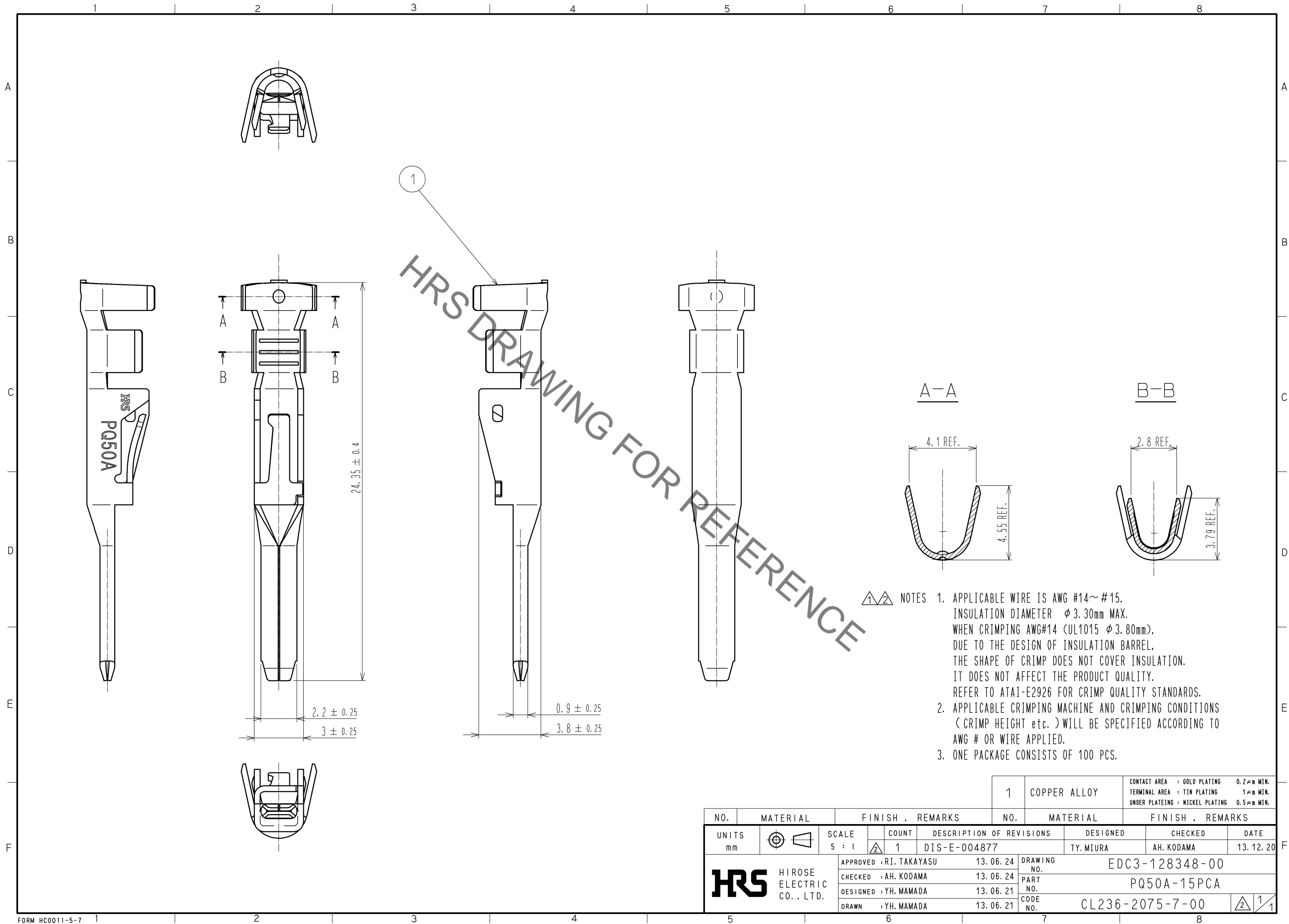
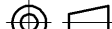





Jan.1.2022 Copyright 2022 HIROSE ELECTRIC CO., LTD. All Rights Reserved.
In case of consideration for using Automotive equipment / device which demand high reliability, kindly contact our sales window correspondents.



					1		COPPER ALLOY		CONTACT AREA : GOLD PLATING TERMINAL AREA : TIN PLATING UNDER PLATING : NICKEL PLATING			0.2μm MIN. 1μm MIN. 0.5μm MIN.							
NO.		MATERIAL		FINISH , REMARKS				NO.		MATERIAL		FINISH , REMARKS							
UNITS mm				SCALE 5 : 1				COUNT 1		DESCRIPTION OF REVISIONS DIS-E-004877				DESIGNED TY. MIURA		CHECKED AH. KODAMA		DATE 13. 12. 20	
 HIROSE ELECTRIC CO. , LTD.						APPROVED : RI. TAKAYASU				13. 06. 24		DRAWING NO. EDC3-128348-00							
						CHECKED : AH. KODAMA				13. 06. 24		PART NO. PQ50A-15PCA							
						DESIGNED : YH. MAMADA				13. 06. 21		CODE NO. CL236-2075-7-00							
						DRAWN : YH. MAMADA				13. 06. 21		 1							