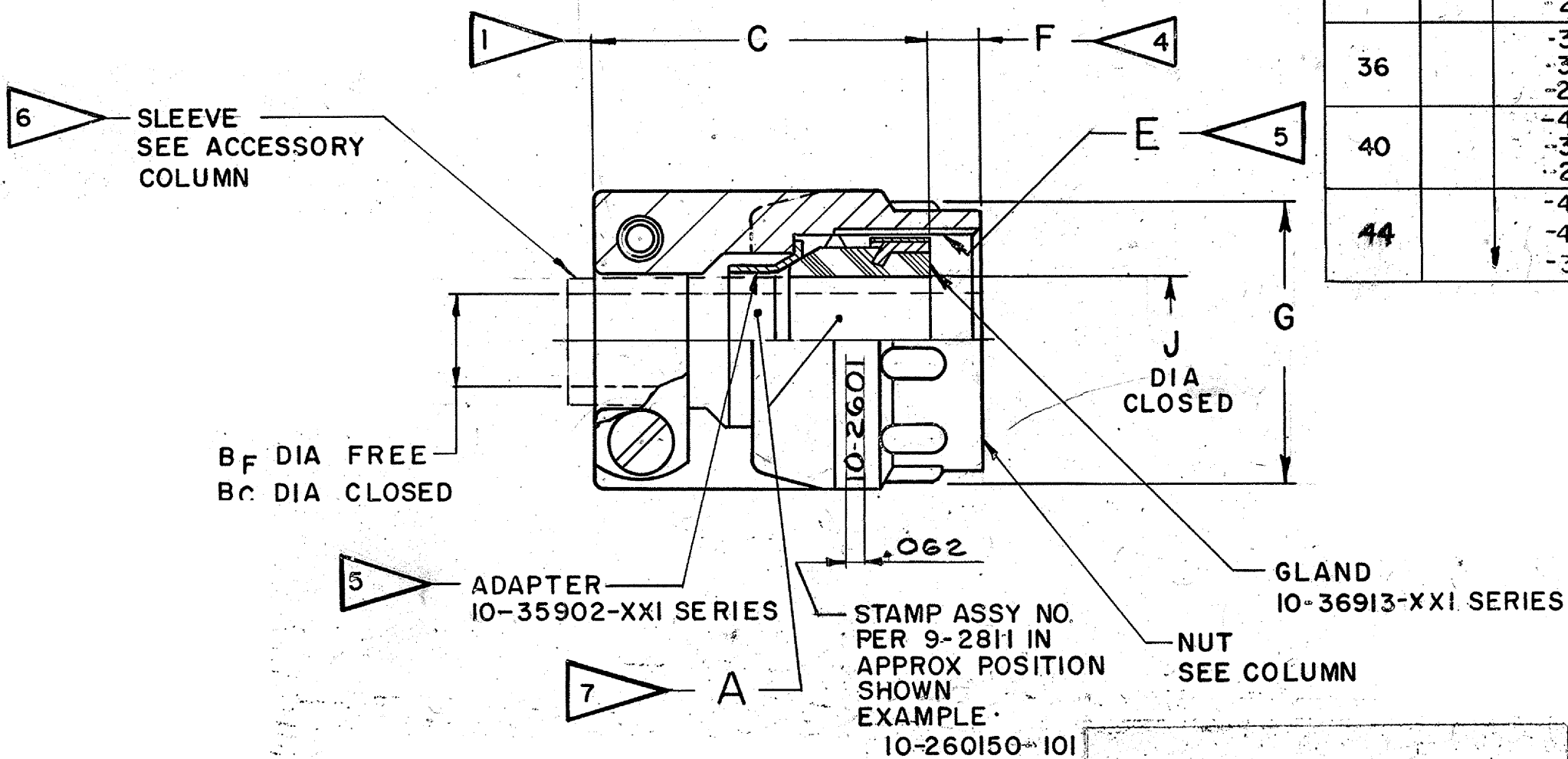
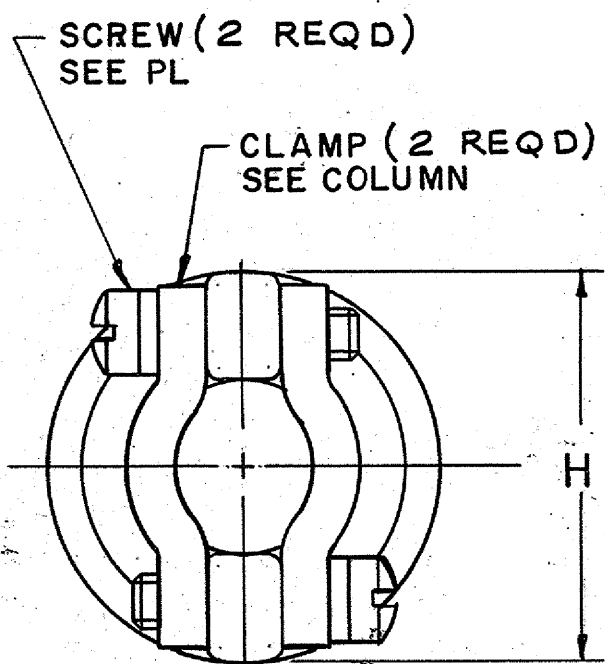


ASSEMBLY NUMBER	MS NO. REF	CLAMP	NUT	A DIA MAX CABLE	J DIA CLOSED	C MAX	E THREAD CLASS 2B	F MIN	G DIA ±.016	H MAX	RELEASE
10-260150-10	3057-3B	10-130511-8	10-350348-10	.209	.027	.938	.500 -28UNEF	.375	.719	.812	39508-68
-12	-4B	-10	-12	.302	.094		.625 -24UNEF		.844	.906	
-14	-6B	-12	-14	.428	.230		.750 -20UNEF		.969	1.031	
-16	-8B	-14	-16	.515	.316		.875 -20UNEF		1.094	1.125	
-18	-10B	-16	-18	.614	.378	1.016	1.000 -20UNEF		1.219	1.234	
-20	-12B	-18	-20	.738	.445	1.031	1.1875-18UNEF		1.406	1.484	
-24	-16B	-20	-24	.926	.611	1.141	1.4375-18UNEF		1.656	1.671	
-32	-20B	-28	-32	1.200	.922	1.328	1.750 -18UNS	.438	2.000	2.188	
-36	-24B	-30	-36	1.363	.922	1.531	2.000 -18UNS	.500	2.250	2.344	
-40	-28B	-34	-40	1.611	1.180	1.531	2.250 -16UN	.500	2.500	2.594	
-44	-32B	10-130511-39	-44	1.865	1.427	1.612	2.500 -16UN	.574	2.750	2.812	52524-621

REL NO. 39508-68			REVISIONS	
CHG NO.	SYM	DESCRIPTION	DATE	APPROVED
55618	A7	FOR CHGS A1 THRU A6 SEE RECORD DWG	3-6-74	<i>Handwritten</i>
55823	A8	WAS 10-130511-38(1) (CLAMP COL) (-44)	6-7-74	<i>Handwritten</i>
72213	B	(CL II) REV CLAMP COL	5-28-81	<i>Handwritten</i>
A9226	C	(CL I) UPDATED COMPANY NAME/ADDRESS; REMOVED FROM NOTE 3 "GREY ANODIZE SUFFIX -XX4"	4-13-11	JONES

ACCESSORY (NOT PART OF STANDARD ASSY)			
SIZE	SLEEVE	B <sub>F</sub> DIA ±.016	B <sub>C</sub> DIA
10	10-35910-101	.125	.000
12			
14	-121	.219	.010
16	-141	.312	.114
18	-161	.438	.222
20	-181	.541	.312
24	-201	.682	.438
32	-241	.938	.620
36	-301	1.250	.816
40	-321	1.625	1.229
44	-401	2.000	1.671



7. DIA INDICATED IS THE MINIMUM FREE INSIDE DIA OF EITHER THE ADAPTER OR GLAND AND DETERMINES THE MAX ACCEPTABLE CABLE DIA.
6. IN CLAMP SIZES WHERE MORE THAN ONE ACCESSORY SLEEVE IS INDICATED, THE SMALLER SIZE SLEEVES TELESCOPE INTO LARGER SIZE SLEEVES TO OBTAIN THE MIN. CLOSED DIA INDICATED IN COLUMN B<sub>C</sub>.
5. LUBRICATE THREADS & SURFACES OF INDICATED ADAPTER WITH A LIGHT FILM OF PETROLATUM 9-3239.
4. MINIMUM THREAD ENGAGEMENT REQUIRED TO OBTAIN MAXIMUM CLAMPING ACTION.
3. TO COMPLETE ASSEMBLY NUMBER, CLAMP & NUT NUMBERS, ADD APPLICABLE THIRD DIGIT SUFFIX NUMBER FOR DESIRED FINISH:  
 BRIGHT CADMIUM PLATE ... SUFFIX -XX1  
 BLACK ANODIZE ... SUFFIX -XX2  
 CADMIUM PLATE OLIVE DRAB ... SUFFIX -XX3
2. FOR COMPONENT PART NUMBERS, QUANTITIES AND RELEASE STATUS OF THE DESIRED UNIT, SEE SEPARATE PARTS LIST.
1. DIMENSION INDICATES FINAL INSTALLATION. FOR STORAGE & SHIPPING, ASSEMBLE PARTS IN FREE POSITIONS AS SHOWN.

NOTES: REF SYMBOL

ITEM NO.	QTY REQD	DESCRIPTION	PART NUMBER	CODE IDENT	ZONE
PARTS LIST					
UNLESS OTHERWISE SPECIFIED		DRAWN: A. HISCOTT DATE: 8-7-62 CHECKED: <i>Handwritten</i> DATE: 8-29-62 MATERIAL: <i>Handwritten</i> STANDARDS: <i>Handwritten</i> 8-29-62 DRAFTING: <i>Handwritten</i> 8-29-62 ENGINEERING: <i>Handwritten</i> 8-29-62 DEVELOPMENT: <i>Handwritten</i>			
MATERIAL SPEC		PROCESS SPEC 9-3239 9-2811			
AMPHENOL CORPORATION 40-60 DELAWARE AVENUE SIDNEY, NEW YORK					
CLAMP, CABLE, ELECTRICAL CONNECTOR ASSEMBLY OF					
CODE IDENT NO.		77820 C			
SCALE		NONE			
SEE PARTS LIST		REF 10-350349 SHEET			