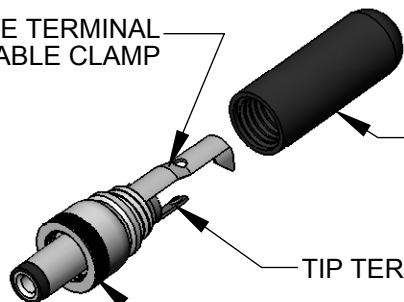


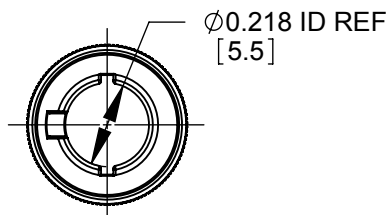
SLEEVE TERMINAL
CABLE CLAMP



HANDLE
SHIPPED
UNASSEMBLED

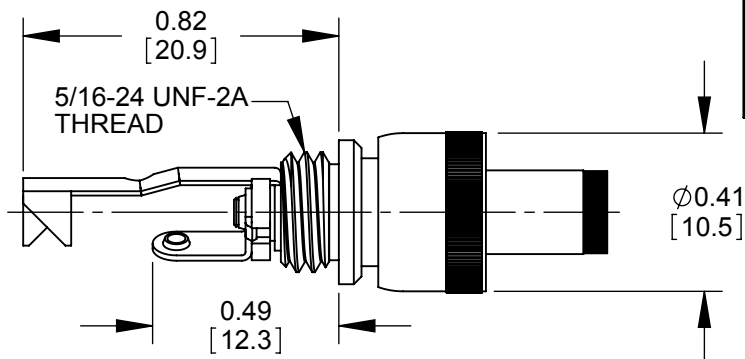
TIP TERMINAL

COUPLING RING



Ø0.218 ID REF
[5.5]

Ø0.38
[9.5]



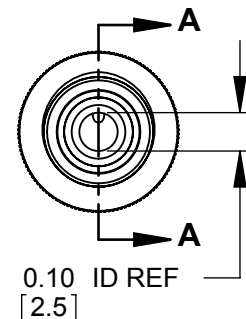
FLOATING LOCKRING
5/16-32 NEF-2B
INTERNAL THREAD

0.374
[9.5]

SECTION A-A

1.00
[25.3]

Ø0.218
[5.5]
REF



0.10 ID REF
[2.5]

0.06
[1.6]

NOTES:

1. MATERIALS:
CONDUCTORS, LOCKRING - BRASS, NICKEL PLATED
TERMINALS - BRASS, TIN PLATED
INSULATORS, HANDLE - THERMOPLASTIC
2. THIS PRODUCT IS RoHS COMPLIANT

CUSTOMER DRAWING

					<div>UNLESS OTHERWISE SPECIFIED</div> <div>1. ALL DIMENSIONS IN INCHES</div> <div>- TWO PLACE DECIMALS ±0.02</div> <div>- THREE PLACE DECIMALS ±0.005</div>	THIS DRAWING DESCRIBES A DESIGN CONSIDERED PROPRIETARY IN NATURE, DEVELOPED AND MANUFACTURED BY SWITCHCRAFT INC. AND IS RELEASED ON A CONFIDENTIAL BASIS FOR IDENTIFICATION PURPOSES ONLY.					
						SIZE *	WIDTH *	MULT *	LBS/M *	TEMPER *	
						FINISH *			MATERIAL *		
						SPEC No. *			SPEC No. *		
						FIRST USED ON *		SCALE 2:1		Switchcraft®	
						DATE DRAWN 3-31-09	BY JEB	CHKD JEB 3-31-09	APVD TJK 3-31-09		
C	25989	11-13-08	JEB	TJK	<div>DO NOT SCALE DRAWING</div>	NAME Ø 0.10 [2.5]mm x 0.374 LONG POWER PLUG W/LOCKRING, RoHS				PART No. 760K-765K	REV C
REV	ECO NUMBER	DATE	BY	APVD						SHEET 1 OF 1	
REVISIONS											

DO NOT SCALE DRAWING

SolidWorks CAD File

