

PRODUCT NUMBER

10142802-0XXLF

## NOTES:

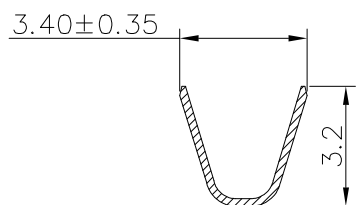
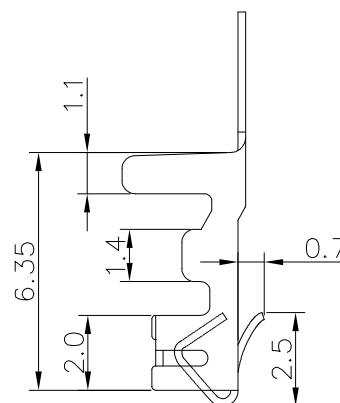
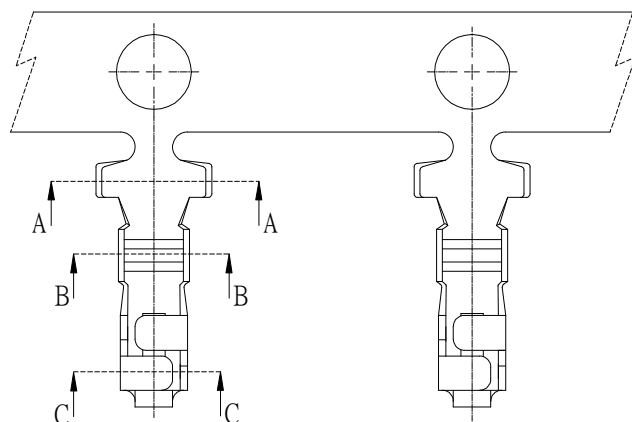
1. MATERIAL: 0.20mm THICK COPPER ALLOY
2. FINISH:  
15U" NICKEL UNDER PLATING  
60U" TIN ON SOLDER TAIL
3. APPLICABLE WIRES: AWG#20-#28
4. INSULATION O.D.: MAX 1.40mm
5. RoHS COMPLIANT
6. THIS TERMINAL IS USED WITH FCI HSG:10142801
7. PRODUCT SPEC: GS-12-1407.
8. PACKING SPEC: GS-14-2573.
9. PART NUMBER SCHEME:  
10142802- 0 X X LF

## FINISH:

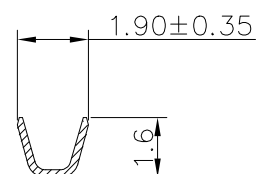
- 1: PRE-MATTE TIN PLATED
- 2: POST-MATTE TIN PLATED
- 3: PRE-BRIGHT TIN PLATED
- 4: POST-BRIGHT TIN PLATED
- 5: GOLD PLATED

## Material:

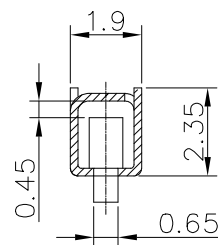
- 1: BRASS
- 2: PHOSPHOR BRONZE



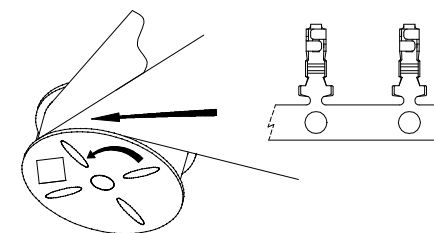
SEC A-A



SEC B-B



SEC C-C



RAW INTO DIRECTION

mat'l. code				surface		tolerance		projection		product family WTB									
litr		ecr no		dr		date		tolerances unless otherwise specified				title							
A				TONY		2017-02-16		angles		linear	.X±0.30		 mm		2.5mm Pitch Crimp Terminal				
								.XX±0.20											
						0°±5°		.XXX±0.10											
								dr		TONY_LEN		2017-02-16		dwg no		sheet 1 of 1		size	
								engr		TONY_LEN		2017-02-16				10142802		A4	
								chr		ZK_HU		2017-02-16							
								appd		TIM_YAO		2017-02-16							
sheet index		revision		A												type		Product Customer Drawing	
		sheet		1															