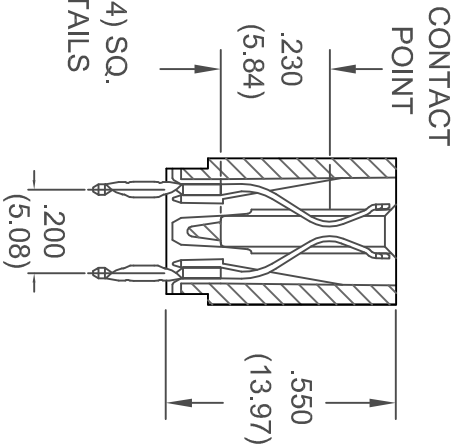
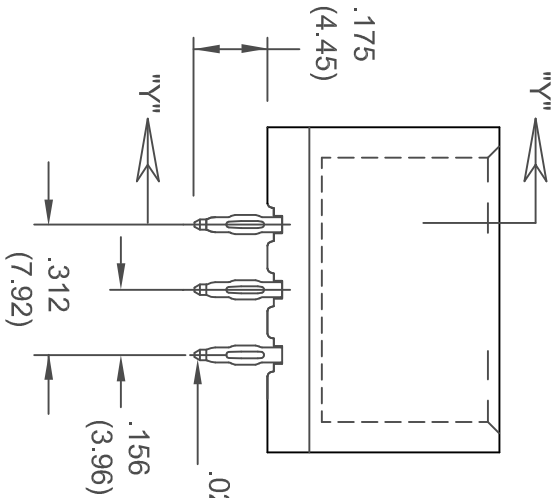


ACCEPTS .054(1.37) TO .070(1.78)  
THICK P.C. BOARD



## SPECIFICATIONS

- INSULATOR MATERIAL: THERMOPLASTIC POLYESTER, UL 94V-0, COLOR: BLACK
- CONTACT MATERIAL: COPPER, NICKEL, TIN ALLOY CA-725
- CONTACT PLATING: 30u" GOLD ON THE MATING AREA, TIN-LEAD ON COMPLIANT SECTION AND CONTACT TAILS, NICKEL UNDERPLATE. OTHER PLATING OPTIONS ALSO AVAILABLE UPON REQUEST.
- CURRENT RATING: 3 AMPERES CONTINUOUS
- CONTACT RESISTANCE: 10 MILLIOHMS MAXIMUM
- DIELECTRIC WITHSTANDING VOLTAGE: 1800 V AC rms AT SEA LEVEL BETWEEN ADJACENT CONTACTS
- INSULATION RESISTANCE: 5000 MEGOHMS MINIMUM
- OPERATING TEMPERATURE: -65 TO +125 DEGREES C
- DAUGHTER BOARD INSERTION FORCE: 16 OZ(4.45 N) MAX. PER CONTACT PAIR, WHEN TESTED WITH A 0.070(1.780) THICK GAUGE.
- DAUGHTER BOARD WITHDRAWAL FORCE: 1 OZ(0.28 N) MIN PER CONTACT PAIR, WHEN TESTED WITH A 0.054(1.37) THICK GAUGE.
- CONTACT INSERTION INTO HOLE: 20 lbs(89N) MAX.
- CONTACT RETENTION INTO HOLE: 10 lbs(44N) MIN..
- REINSERTABILITY OF HOLE: 3 TIMES MINIMUM.

## 717 SERIES PRESS FIT

**EDAC INC.**  
TORONTO, ONTARIO  
CANADA  
YOUR CONNECTION TO QUALITY & SERVICE

THESE DRAWINGS AND SPECIFICATIONS  
ARE THE PROPERTY OF EDAC INC. AND  
SHALL NOT BE REPRODUCED OR COPIED  
OR USED AS THE BASIS FOR THE  
MANUFACTURE OR SALE OF APPARATUS  
WITHOUT WRITTEN PERMISSION.

ACAD REFERENCE NO. 717-006-520-201

DRAWN: F. JAWDI DATE: SEPT. 25/02

CHECKED: DATE:

SCALE: N.T.S. SHEET 1 OF 1

DRAWING NUMBER

717-006-520-201

ISSUE

1