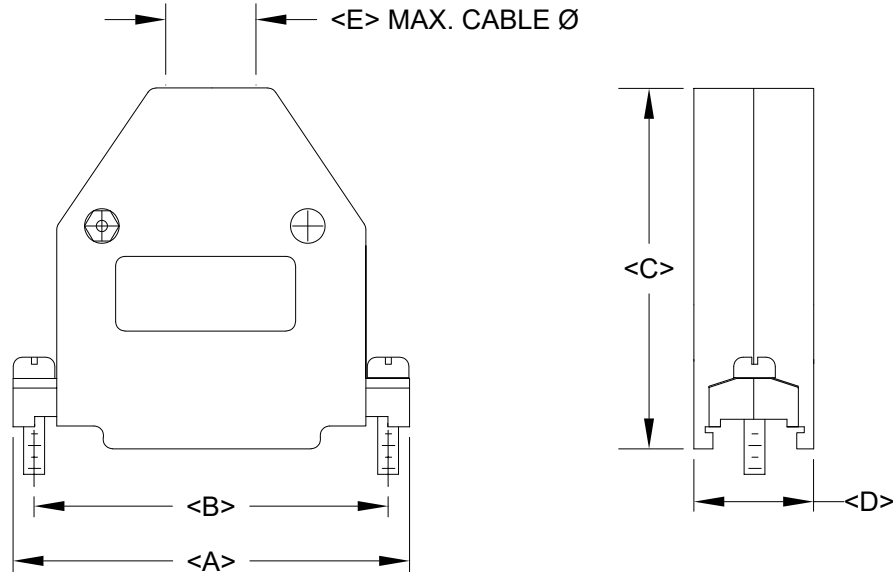


MATERIAL: ABS PLASTIC, UL 94HB
RECOMMENDED OPERATING TEMPERATURE: -20°C TO +80°C



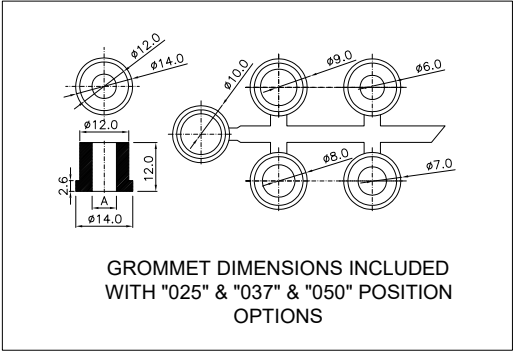
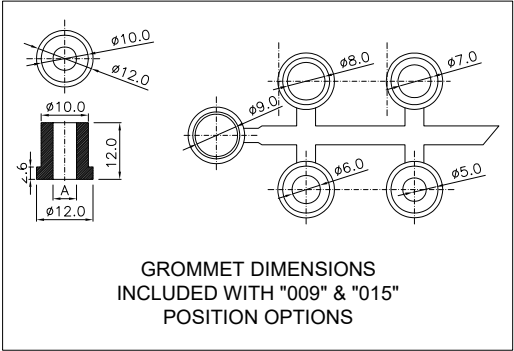
BACK SHELL KIT INCLUDES:

- 2 - BACK SHELL HALVES
- 2 - 4-40 MATING SCREWS
- 2 - SADDLE WASHERS
- 2 - HOUSING SCREWS
- 2 - HOUSING NUTS
- 1 - GROMMET TREE - VARIOUS SIZES
(NON-CONDUCTIVE GROMMETS)

979-YYY-010 R 03 1

SERIES _____
POSITIONS _____
009 _____
015 _____
025 _____
037 _____
050 _____
MATERIAL _____
010 = PLASTIC _____
COLOR _____
03 = GREY _____
PUT-UPS _____
1 = KIT _____

DIMENSIONS(mm)					
SIZE	A ^{±0.015}	B ^{±0.010}	C ^{±0.015}	D ^{±0.015}	E
009	31.28	24.99	48.60	16.66	9.00
015	39.50	33.32	48.13	17.00	9.50
025	53.34	47.04	44.80	16.64	10.00
037	69.80	63.50	48.26	16.64	13.00
050	68.50	61.11	48.26	19.56	13.00



RoHS COMPLIANT



THESE DRAWINGS AND SPECIFICATIONS ARE THE PROPERTY OF NorComp AND SHALL NOT BE REPRODUCED, COPIED OR USED AS THE BASIS FOR THE MANUFACTURE OR SALE OF APPARATUS WITHOUT WRITTEN PERMISSION.

DRAWN: P. JENKINS
DATE: 07/28/2005

UNITS = mm

DO NOT SCALE FROM DRAWING

NorComp

SCALE: NTS	SHEET 1 OF 1	REV 7
DWG NO.	979-YYY-010R031	