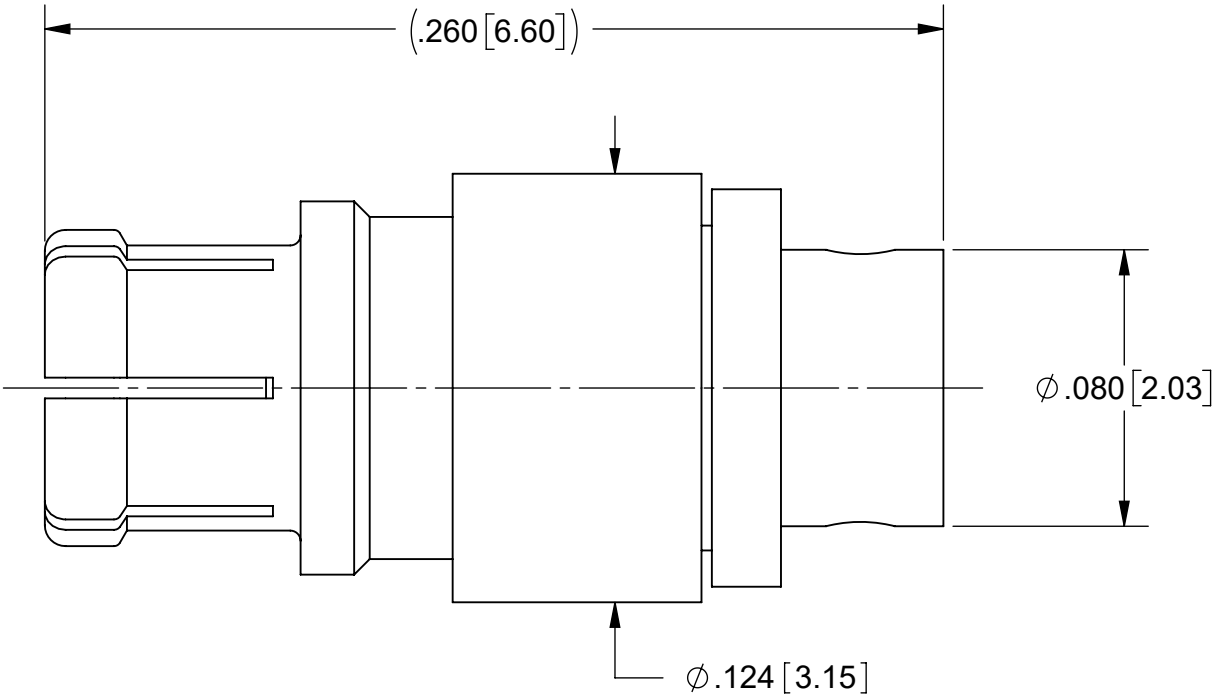
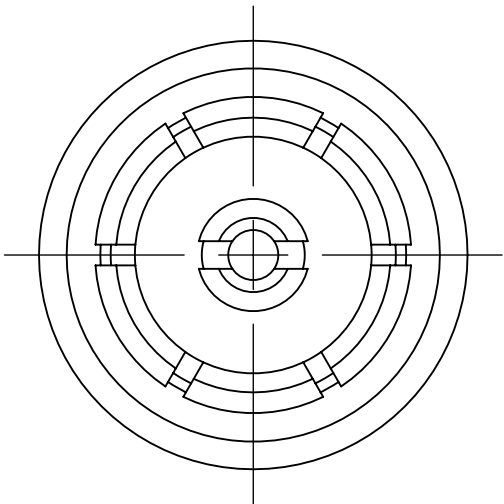
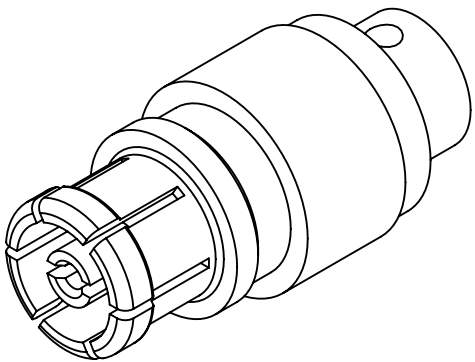


PRODUCT DATA DRAWING

| REVISION HISTORY | | | |
|------------------|-------------|-------|----------|
| REV | DESCRIPTION | DATE | APPROVED |
| - | NRN 34833 | 07/08 | SEE PDM |
| A | DCN 41517 | 07/15 | |
| B | DCN 51539 | 04/22 | |



MATERIAL:


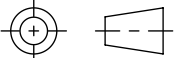
| | |
|-----------------|------------------|
| BODY & CONTACT: | BERYLLIUM COPPER |
| FERRULE: | BRASS |
| INSULATOR: | PTFE |

FINISH:

| | |
|--------------------------|------------------|
| BODY, CONTACT & FERRULE: | GOLD OVER NICKEL |
|--------------------------|------------------|

PERFORMANCE:

| | |
|--------------|--|
| IMPEDANCE: | 50 OHMS |
| FREQ. RANGE: | DC TO 65.0 GHz. |
| VSWR: | 1.15:1 DC TO 26.5 GHz. 1.25:1 DC TO 40.0 GHz. 1.35:1 DC TO 65.0 GHz. |

| | | | | |
|---|---|---|--|---------------------|
| MATERIAL: SEE NOTES | DIMENSIONS ARE IN INCHES TOLERANCES: FRACTIONAL: ±1/64 ANGULAR: X° ±1°0' X°X' ±15' DECIMAL: .X ±.030 .XX ±.010 .XXX ±.005 INTERPRET DIMENSIONS AND TOLERANCES PER ASME Y14.5M - 1994 | UNLESS OTHERWISE SPECIFIED 1) ALL DIMENSIONS ARE IN INCHES (MILLIMETERS) 2) ALL DIMENSIONS ARE AFTER PLATING. 3) BREAK CORNERS & EDGES .005 R. MAX. 4) CHAM. 1ST & LAST THREADS. 5) SURFACE ROUGHNESS 63+MIL-STD-10. 6) DIA.'S ON COMMON CENTERS TO BE CONCENTRIC WITHIN .005 T.I.R. 7) REMOVE ALL BURRS |  www.svmicrowave.com | |
| FINISH: SEE NOTES | | | TITLE: SMPM STRAIGHT FEMALE FOR Ø.047 CABLE | |
| SURFACE AREA: N/A | THIRD ANGLE PROJECTION  | DRAWN: DAL 07/02/08 | SIZE B | DWG. NO. 3221-40007 |
| PROPRIETARY THE INFORMATION CONTAINED IN THIS DRAWING IS THE SOLE PROPERTY OF SV MICROWAVE, INC. ANY REPRODUCTION IN PART OR AS A WHOLE WITHOUT THE WRITTEN PERMISSION OF SV MICROWAVE, INC IS PROHIBITED. | | CHECKED: SEE PDM APPROVED: SEE PDM | SCALE: 18:1 | SHEET 1 OF 1 |