

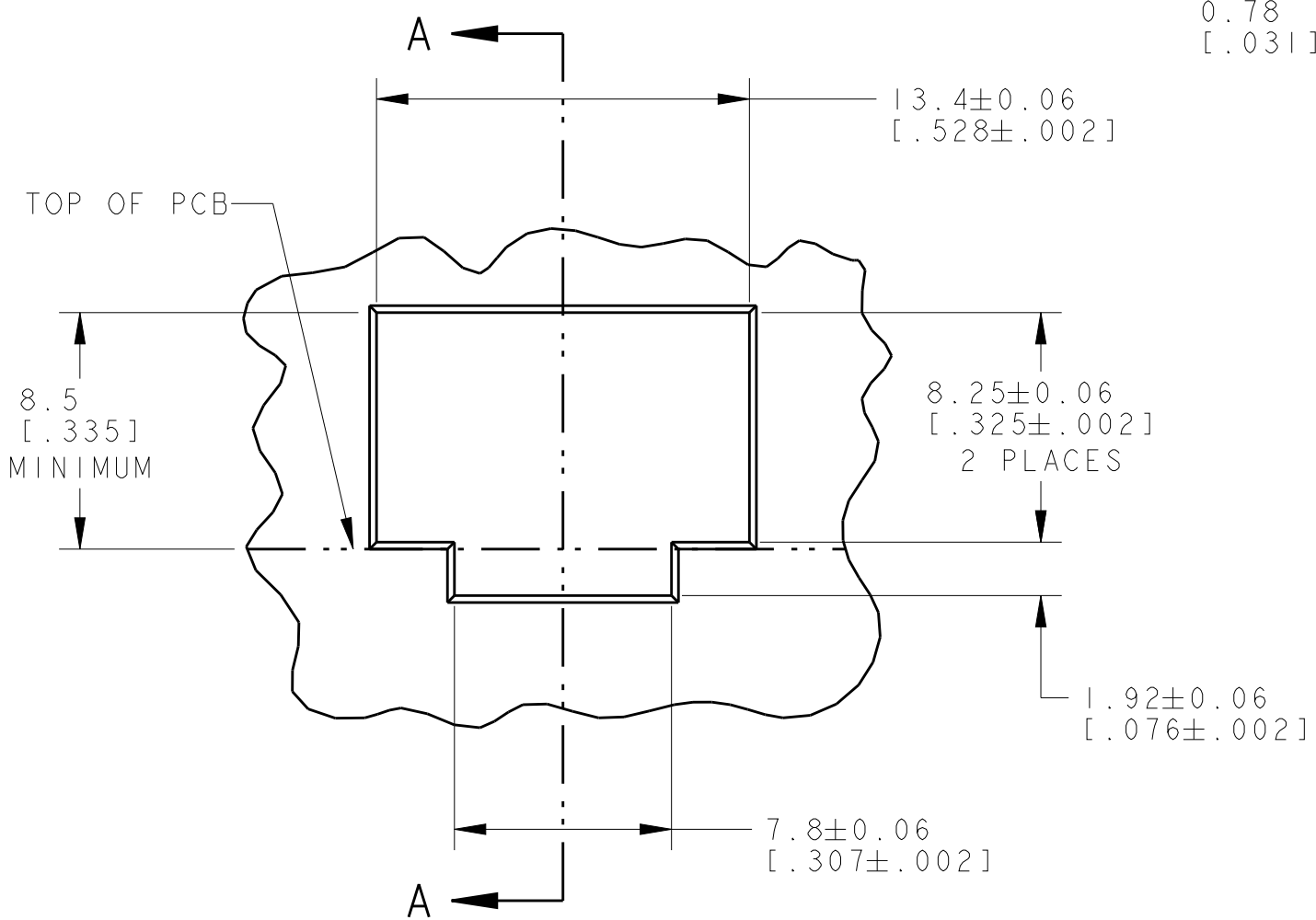
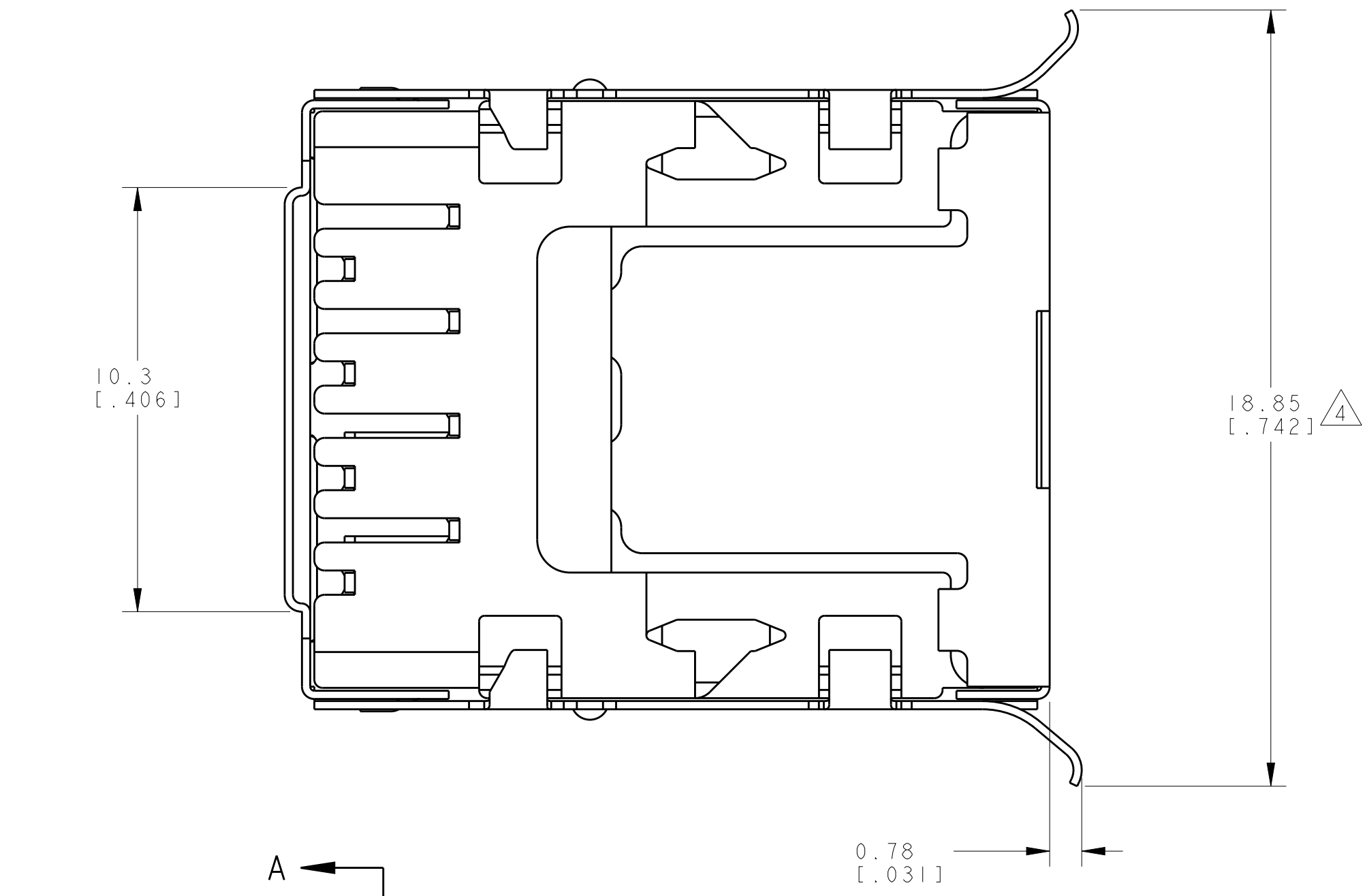
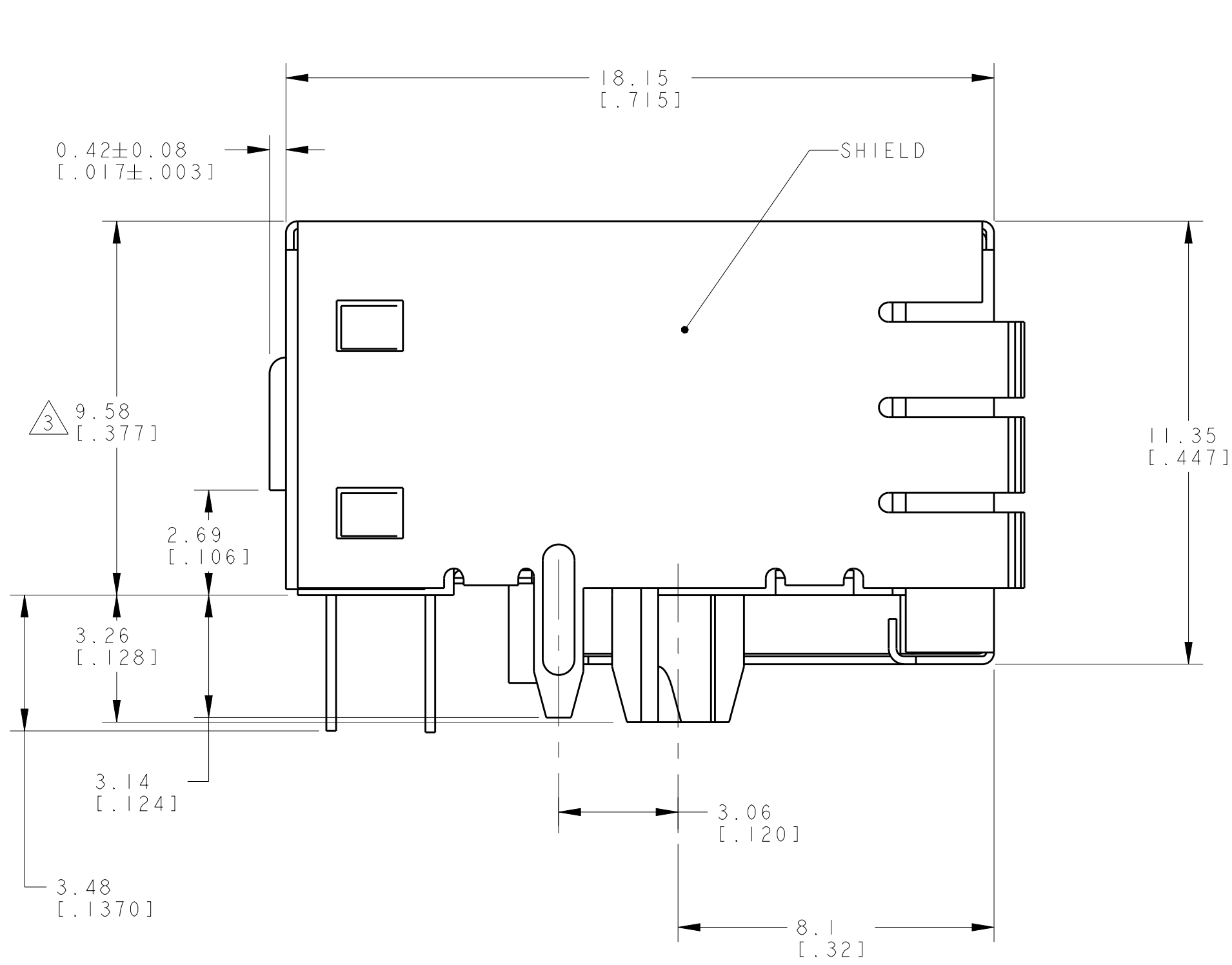
REVISIONS					
P	LTR	DESCRIPTION	DATE	DWN	APVD
	B	REVISED PER ECO-14-015233	27APR2015	LL	SH

D

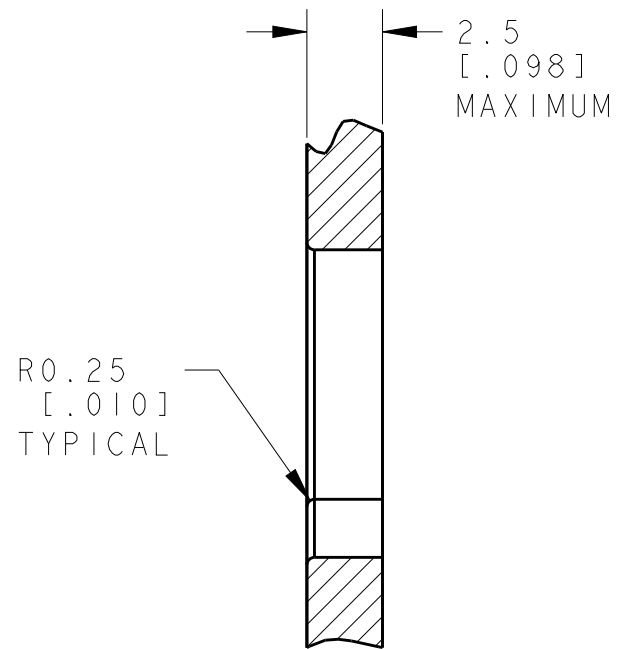
C

B

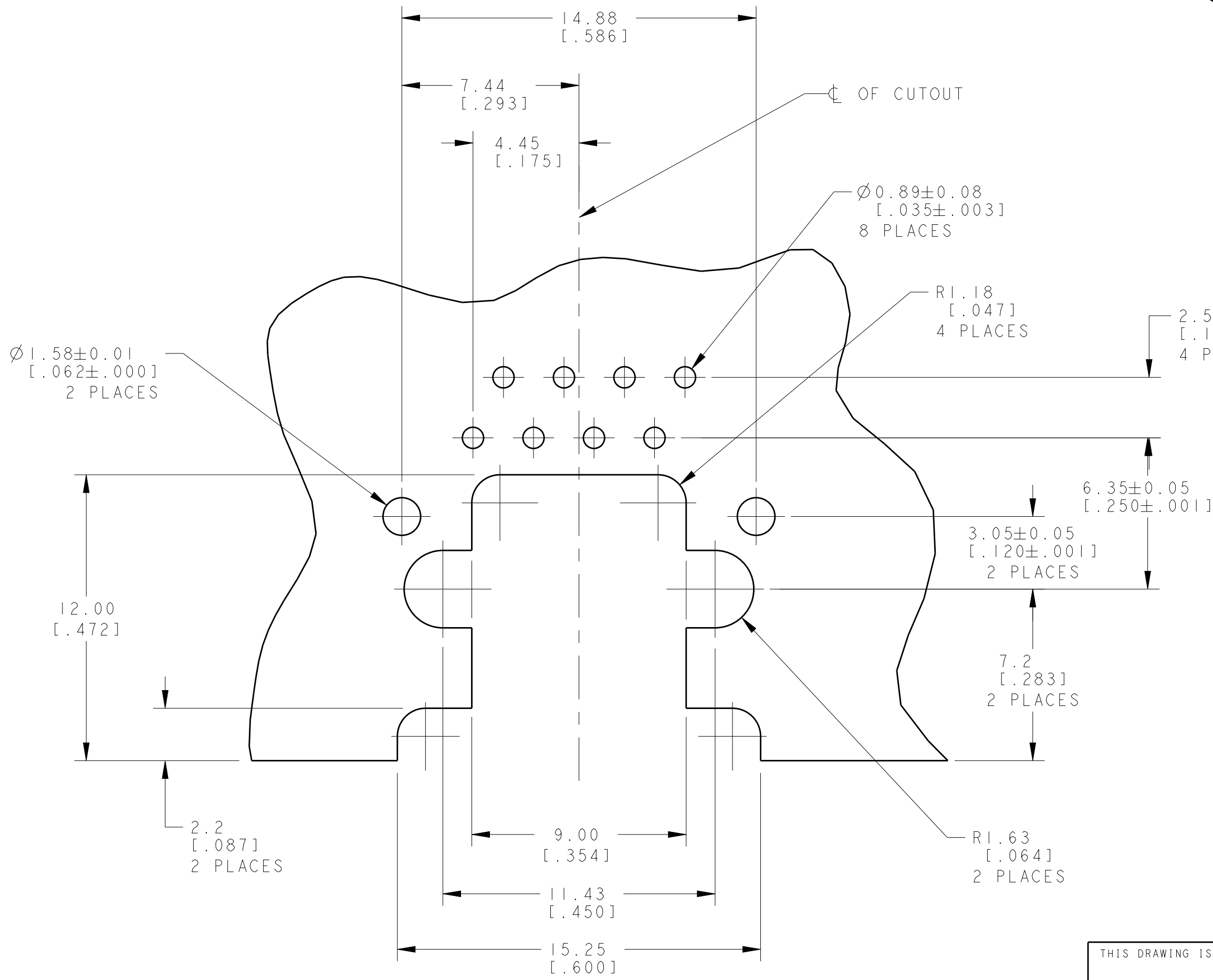
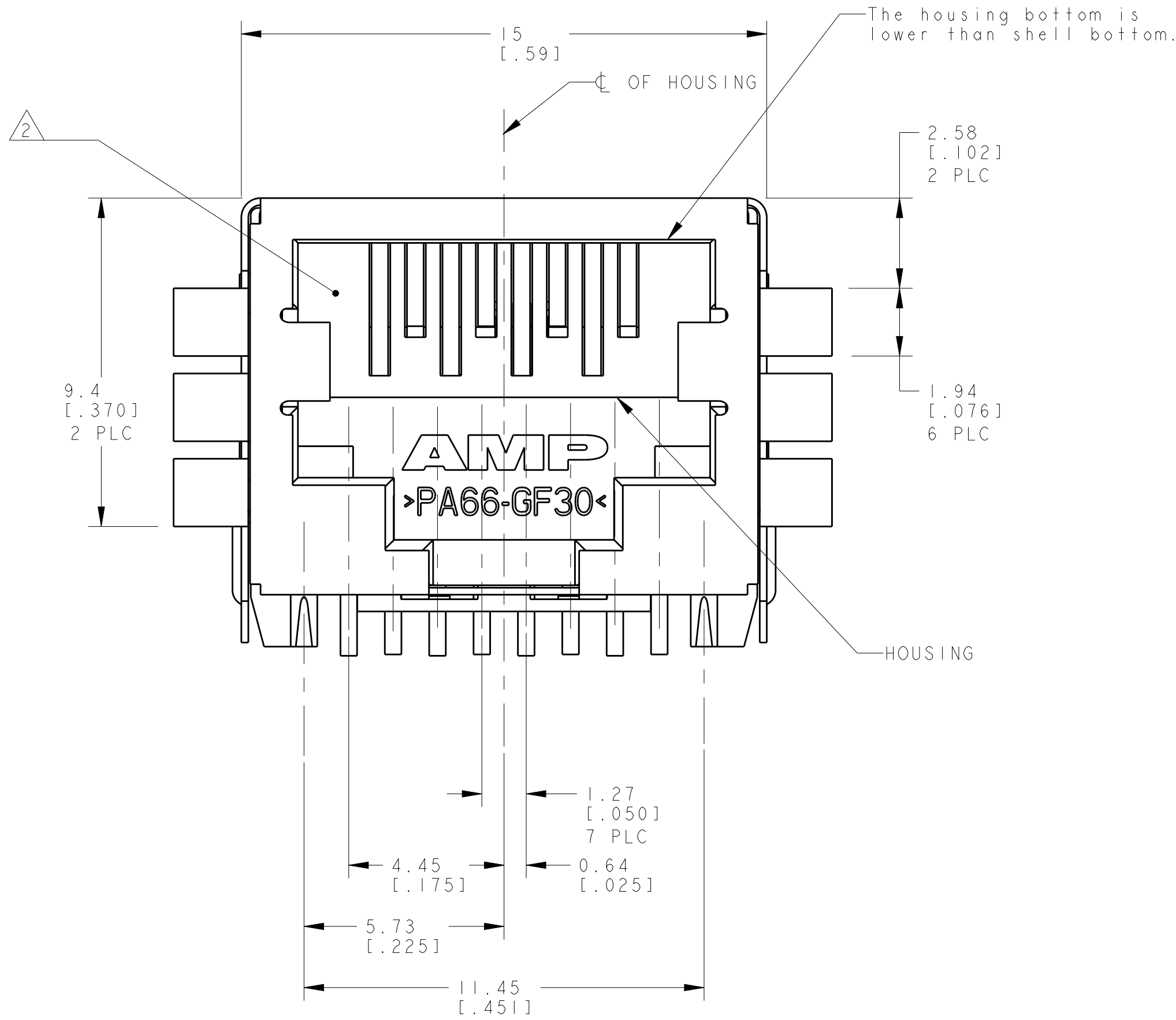
A



SUGGESTED PANEL CUTOUT
SCALE 4:1

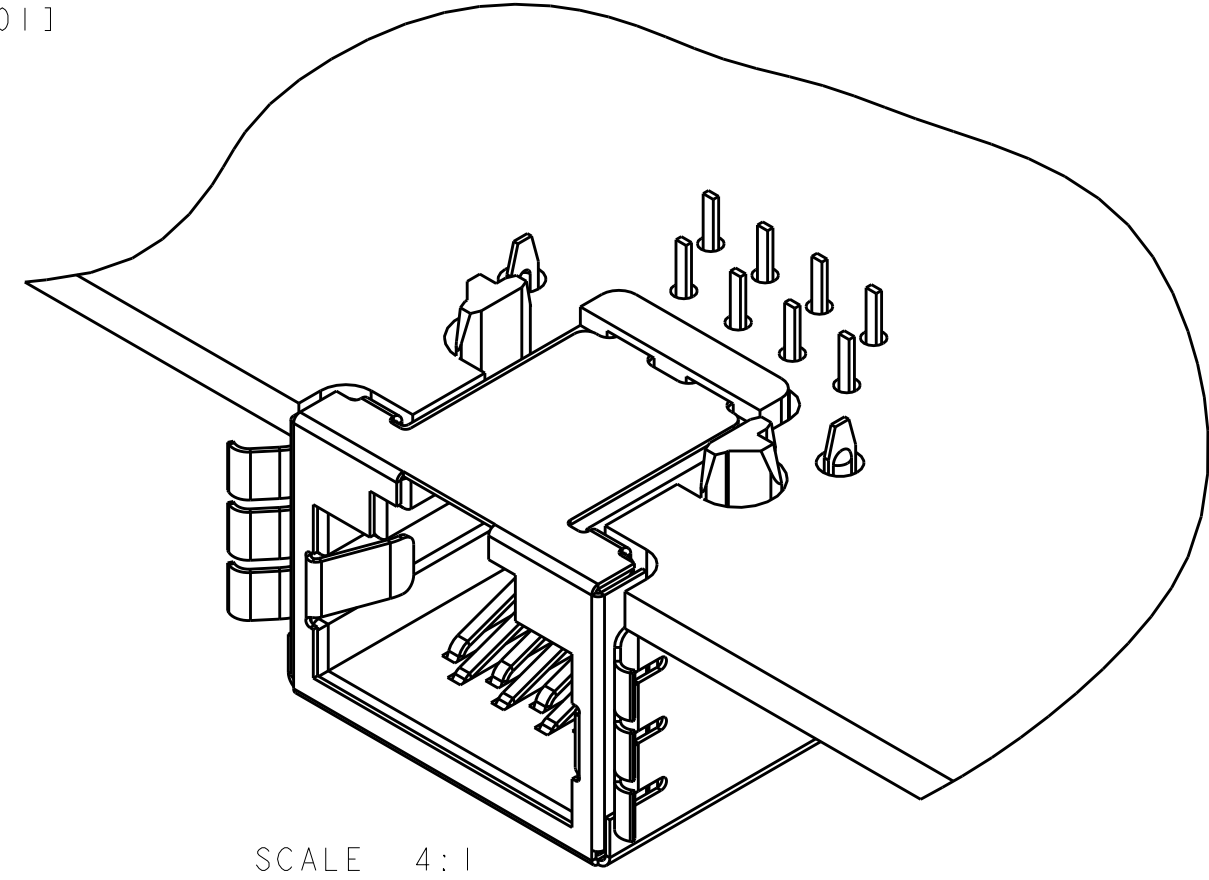
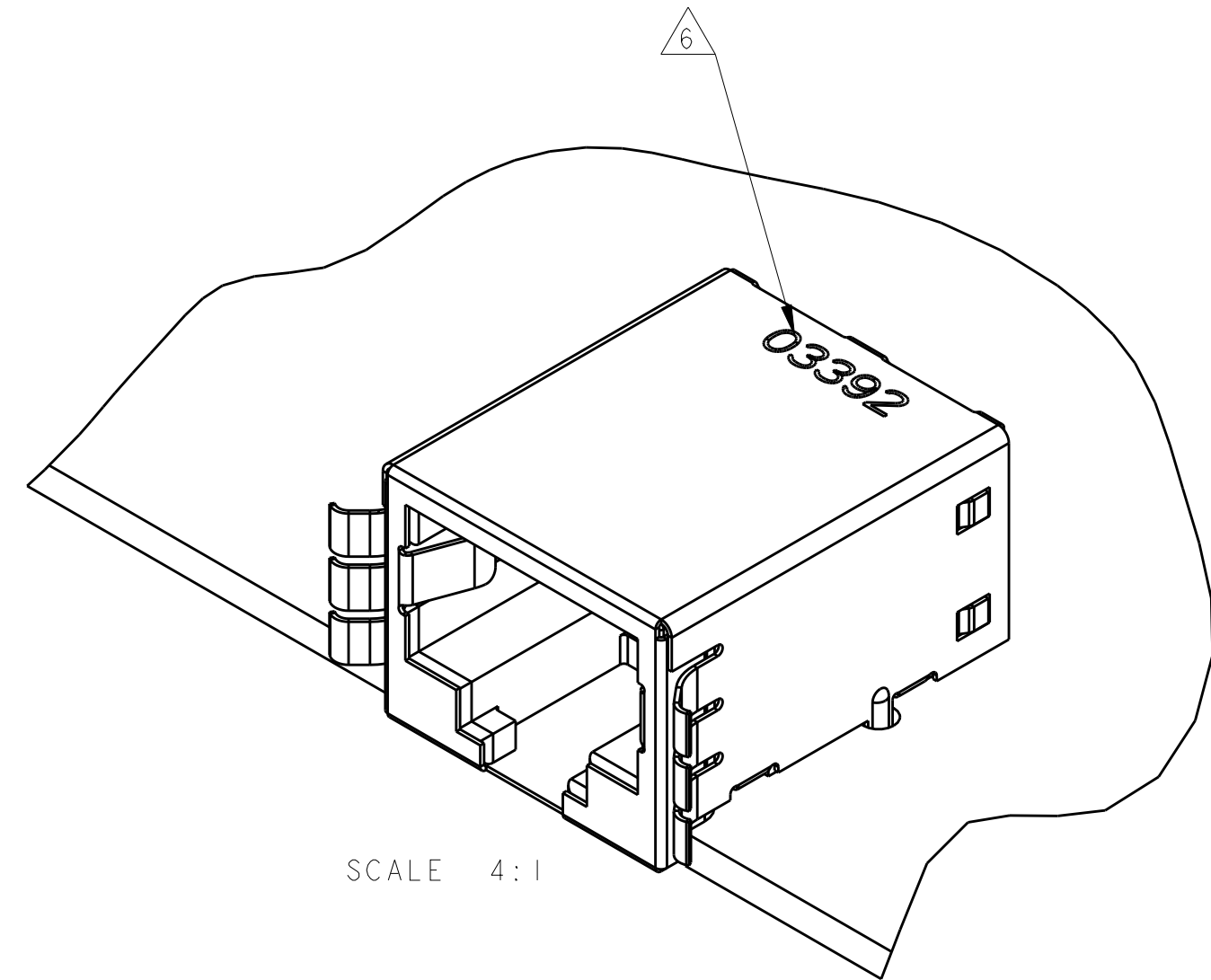


SECTION A-A



SUGGESTED PRINTED CIRCUIT
BOARD LAYOUT
COMPONENT SIDE
SCALE 6:1

- 1 MATERIAL: HOUSING - HIGH TEMPERATURE NYLON, BLACK, UL 94V-0, IR REFLOW SOLDERING PROCESS COMPATIBLE. TERMINALS - 0.25 [.010] THICK PHOSPHOR BRONZE PLATED WITH 3.81µm [.000150] MINIMUM THICK MATTE TIN IN SOLDER AREA, 1.27µm [.000050] MINIMUM GOLD IN LOCALIZED PLATE AREA. ENTIRE TERMINAL PLATED WITH 1.27µm [.000050] MINIMUM THICK NICKEL. SHIELD - 0.1 [.0039] MIN THICK COPPER ZINC ALLOY, PREPLATED WITH 2.0-4.0µm [.000079-.000157] THICK TIN OVER 1.27µm [.000050] MIN THICK NICKEL.
- 2 JACK CAVITY CONFORMS TO FCC RULES AND REGULATIONS PART 68, SUBPART F.
- 3 THIS DIMENSION REPRESENTS THE TOTAL HEIGHT OF THE CONNECTOR FROM THE TOP OF THE PC BOARD.
- 4 THIS DIMENSION HAS A MAXIMUM VALUE OF 20.50 [.807] WHEN JACK IS INSTALLED BEHIND PANEL.
- 5 PACKAGED 66 ASSEMBLIES PER PVC TRAY, 396 PER BOX.
- 6 MANUFACTURING DATE CODE: ORIENTED AND LOCATED APPROXIMATELY AS SHOWN. LASER PRINTING. TEXT HEIGHT APPROXIMATELY 2MM. FIRST 2 DIGITS = LAST 2 DIGITS OF YEAR NEXT 2 DIGITS = MANUFACTURING WORK WEEK LAST DIGIT = DAY OF WEEK WITH SUNDAY = 1



THIS DRAWING IS A CONTROLLED DOCUMENT.		DWN KINSEN, SUN 28MAY2010	1932626-1	
DIMENSIONS: mm [INCHES]		CHK SUNY, ZHAO 28MAY2010	MATERIAL / FINISH	
TOLERANCES UNLESS OTHERWISE SPECIFIED:		APVD STEVEN, YAO 28MAY2010	PART NUMBER	
0 PLC ±		PRODUCT SPEC	TE Connectivity	
1 PLC ±		108-1163		
2 PLC ±		APPLICATION SPEC	MODULAR JACK ASSEMBLY, 8 POSITION, SHIELDED, 10mm	
3 PLC ±		114-2048		
4 PLC ±		SIZE	CAGE CODE	
ANGLES		114-2048	DRAWING NO	
FINISH		114-2048	RESTRICTED TO	
MATERIAL SEE P/N TABLE		WEIGHT 3.49 grams	A1	
SEE P/N TABLE		CUSTOMER DRAWING	SCALE 8:1	
			SHEET 1 OF 1	
			REV B	