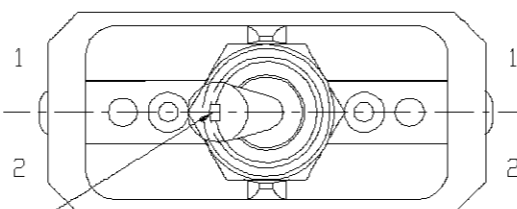


B

91-302

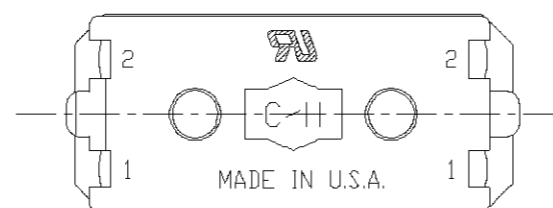
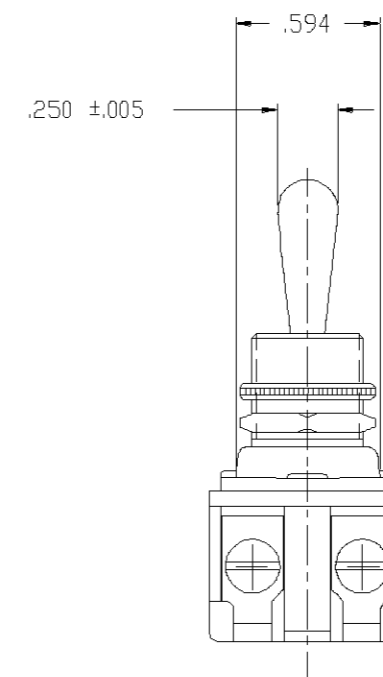
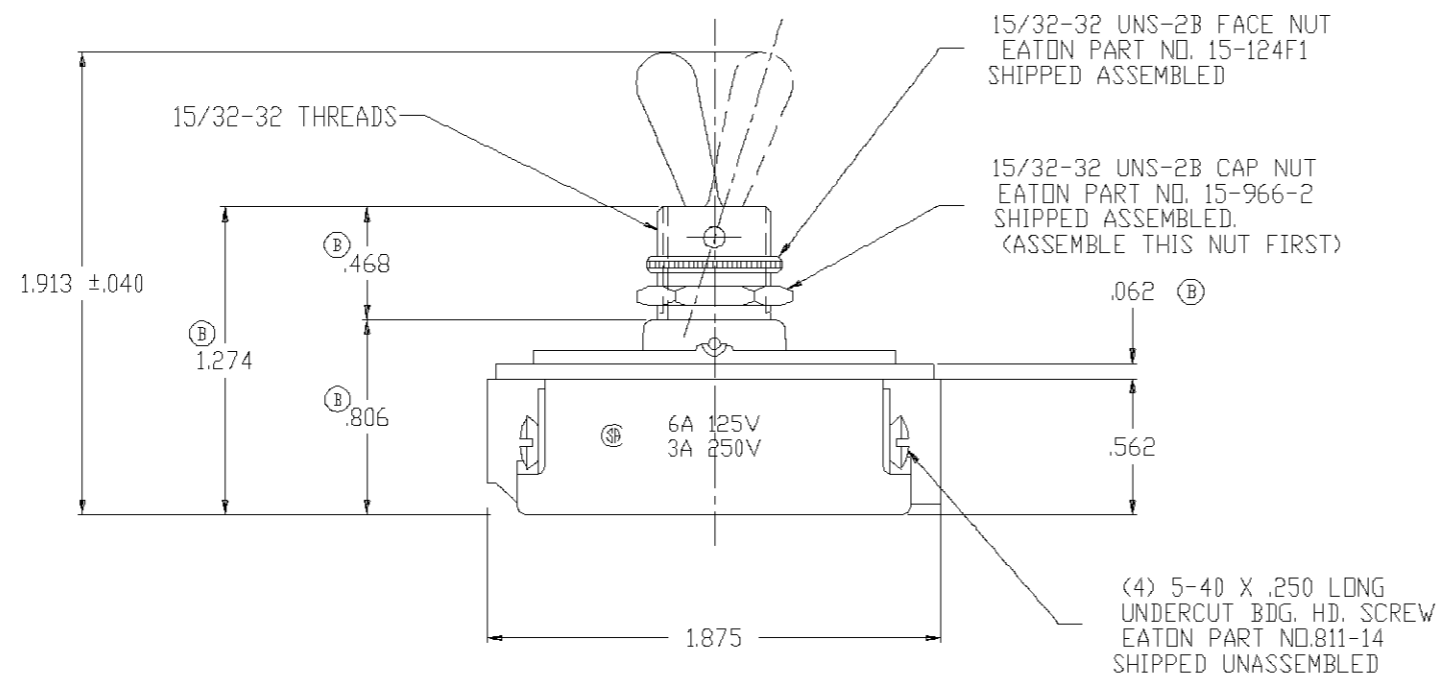
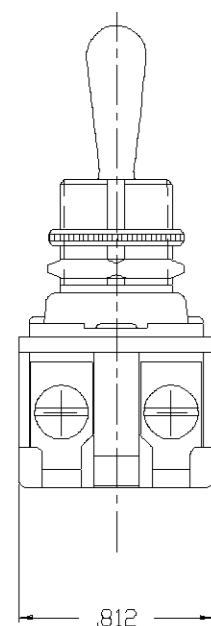
.068 $\begin{smallmatrix} +.003 \\ -.004 \end{smallmatrix}$ X .038 DEEP KEYWAY



(A) IN LEVER POSITION SHOWN
TERMINAL 1 & 1 CONNECTED.
IN OTHER POSITION 2 & 2
CONNECTED.

NOTE:

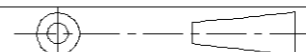
1. UNLESS OTHERWISE SPECIFIED ALL
TOLERANCES TO BE $\pm .016$.



ORDER NO. 93719950

A	LEVER POSITION NOTE: 1 & 1 WAS 2 & 2. 2 & 2 WAS 1 & 1.	WL	JW	MRD	2/25/92	D					
B	.062 WAS .047; .806 WAS .791; .468 WAS .453; 1.274 WAS 1.244.	JF			4/20/94	E					
C						F					

THIRD ANGLE PROJECTION



EATON

TITLE: DOUBLE POLE 3A 250V/6A 125V ONE HOLE MTD. TOOL HANDLE 2 POSITION TOGGLE SWITCH			
DR. W. LEONARD	2/19/92	SURFACE COATING	FIRST ASSEM. WHERE LISTED 8980K204
CHK. WESTEMEIER	2/20/92	SCALE	SUP'S A-H 80605BD
APP. M.R. DUMMER	2/20/92	DO NOT SCALE DRAWING	SUP'D BY