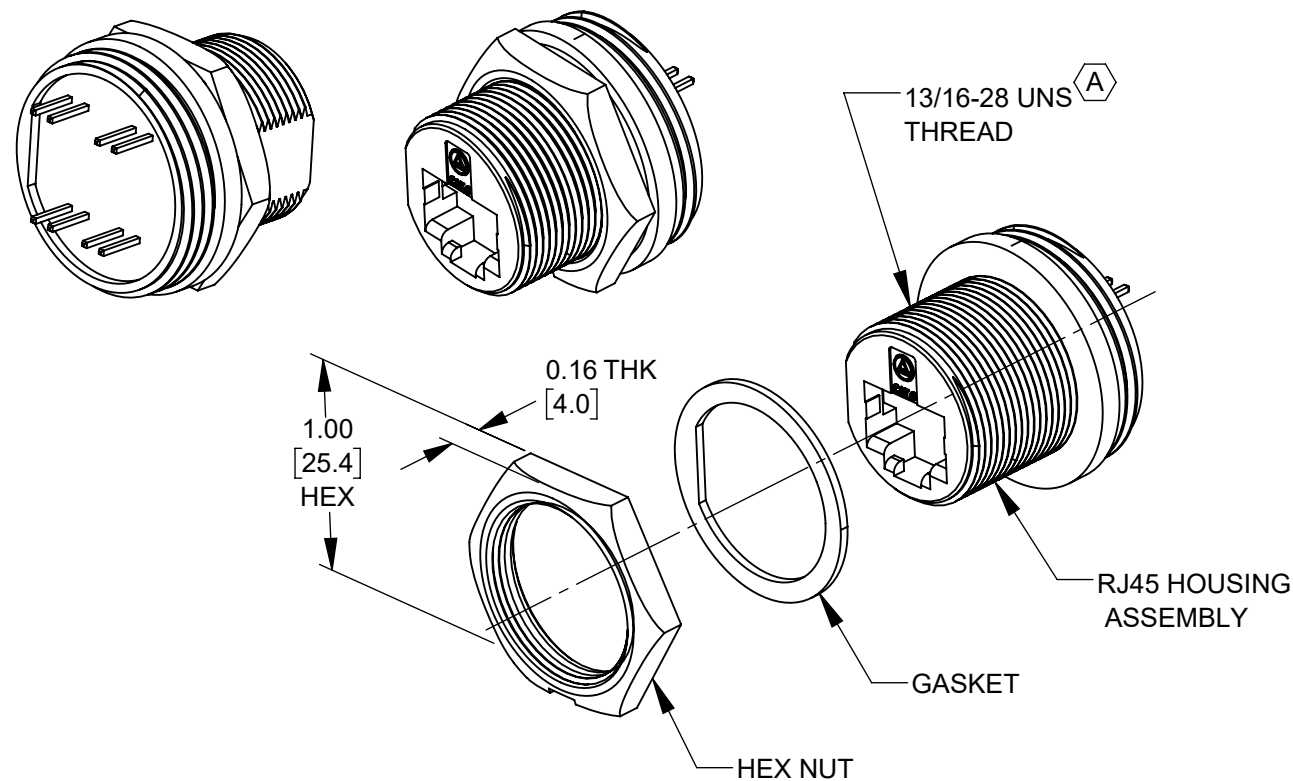
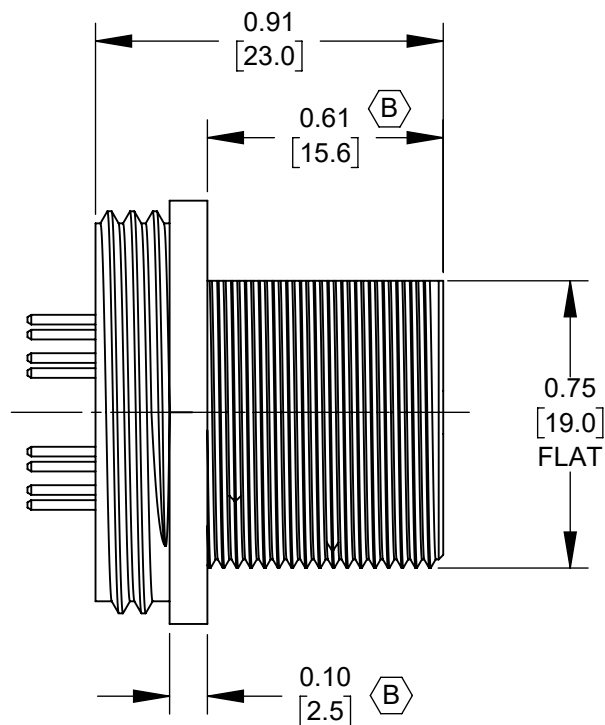
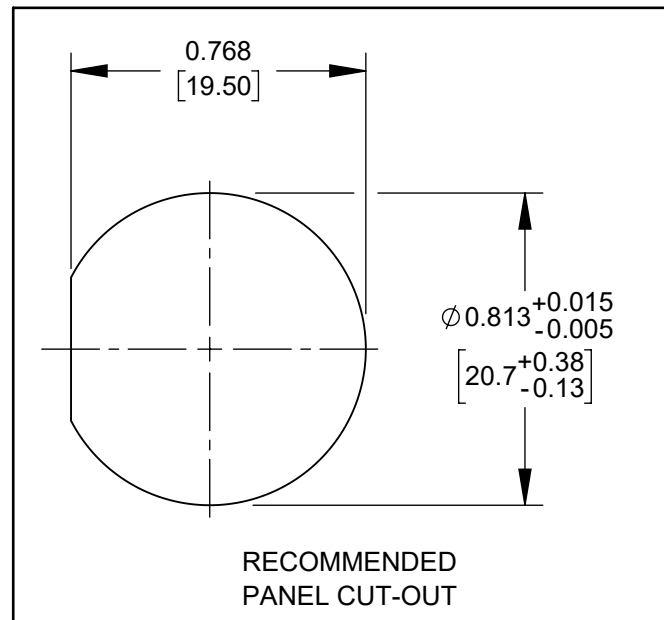
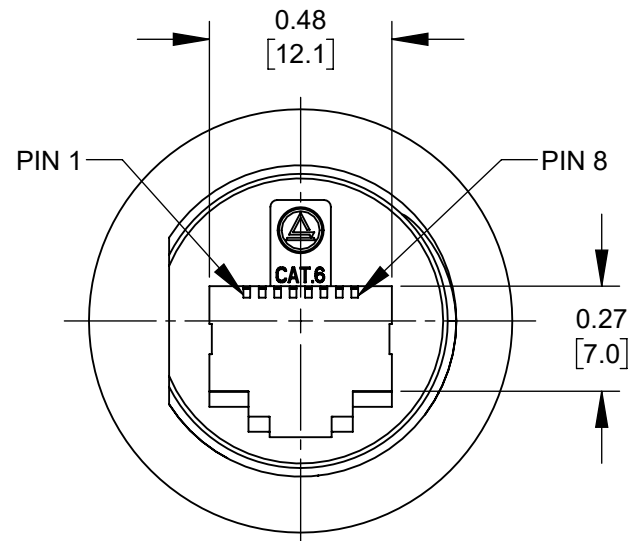


8X 0.025
[0.64]
SQUARE

0.18±0.02
[4.5±0.5]

LIQUID
GLUE
SILICONE



CUSTOMER DRAWING

- NOTES:
1. IP67 RATED WHEN PROPERLY ASSEMBLED.
 2. PANEL THICKNESS MAX OF 0.169 [4.30].
 3. ALL PARTS SHIPPED ASSEMBLED.
 4. MATERIALS;
HOUSING AND PANEL NUT - NYLON, BLACK
GASKET- EPDM RUBBER, BLACK
 5. THIS PRODUCT IS RoHS COMPLIANT.

REV	ECO NUMBER	DATE	BY	APVD
B	28436	11/01/21	PC	TJK
A	28311	08/24/20	PC	TJK
REVISIONS				

UNLESS OTHERWISE SPECIFIED

1. ALL DIMENSIONS IN INCHES [mm]
- TWO PLACE DECIMALS ±0.02 [0.5]
- THREE PLACE DECIMALS ±0.005 [0.13]

DO NOT SCALE DRAWING

SolidWorks CAD File (B)

THIS DRAWING DESCRIBES A DESIGN CONSIDERED PROPRIETARY IN NATURE, DEVELOPED AND MANUFACTURED BY SWITCHCRAFT INC. AND IS RELEASED ON A CONFIDENTIAL BASIS FOR IDENTIFICATION PURPOSES ONLY.

SIZE		WIDTH		MULT		LBS/M		TEMPER	
FINISH SPEC No.					MATERIAL SPEC No.				
FIRST USED ON			SCALE 2:1		Switchcraft®				
DATE DRAWN 6/23/20	BY FM	CHKD FM 6/23/20	APVD TJK 7/31/20						
					SHEET 1 OF 1				
NAME RJ45 CAT6 PANEL MOUNT, UNSHIELDED JACK, PC TERMINAL					PART No. ENDP6PC				REV B