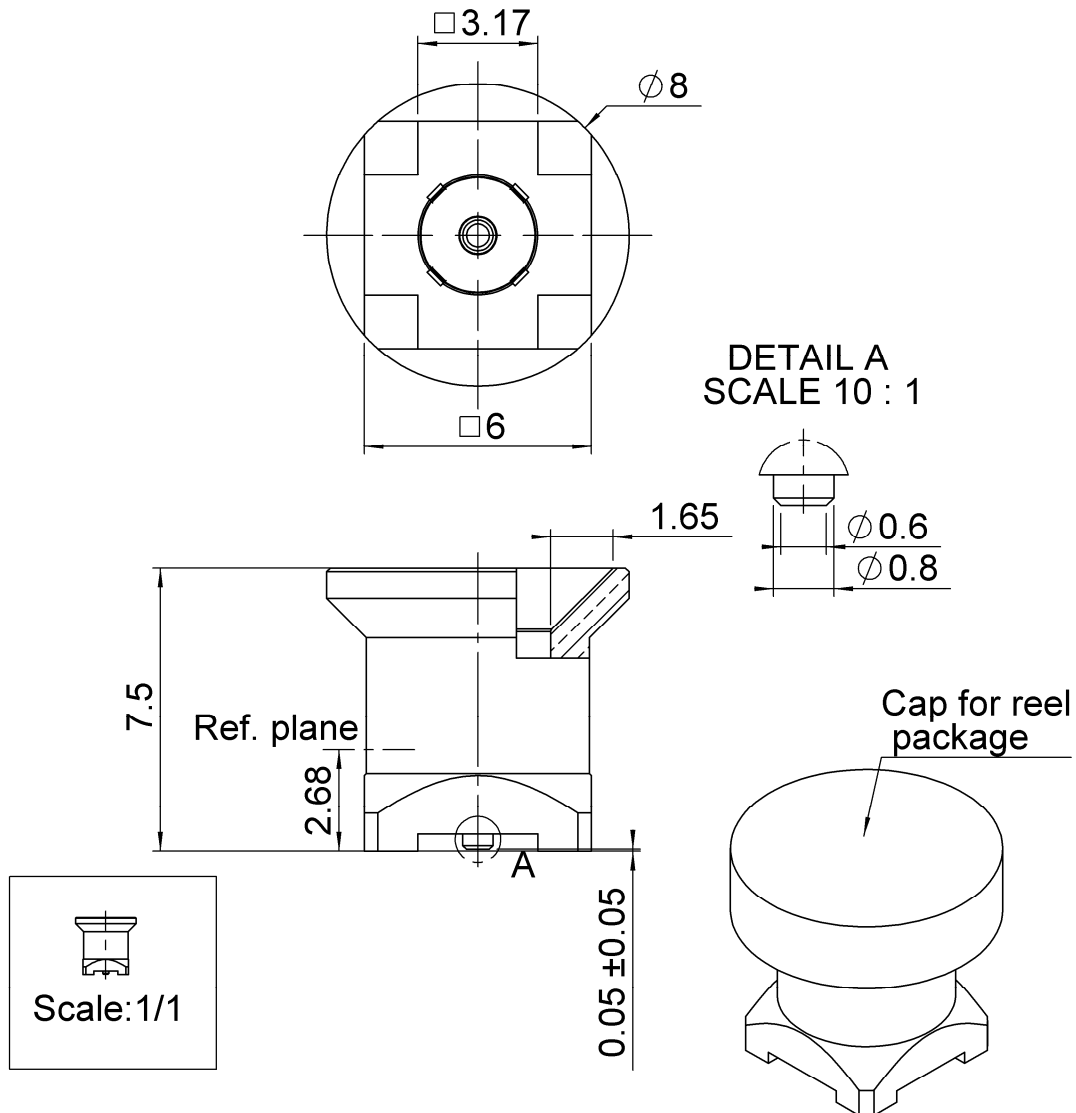


STRAIGHT MALE RECEPTACLE FOR SMT

SLIDE TYPE - REEL OF 500

R222.M00.740

Series : SMP-MAX



All dimensions are in mm.

COMPONENTS	MATERIALS	PLATING (μm)
BODY	BRASS	NPGR
CENTER CONTACT	BRASS	NPGR
OUTER CONTACT		
INSULATOR	PTFE	
GASKET		
OTHERS PARTS	PTFE	
-	-	-
-	-	-

Issue : 1107 A

In the effort to improve our products, we reserve the right to make changes judged to be necessary.

RADIAL 

STRAIGHT MALE RECEPTACLE FOR SMT**R222.M00.740****SLIDE TYPE - REEL OF 500**

Series : SMP-MAX

PACKAGING

Standard	Unit	Other
500	'W' option	Contact us

SPECIFICATION**ELECTRICAL CHARACTERISTICS**

Impedance	50	Ω
Frequency	0-6	GHz
VSWR	1.25* + 0,0000	x F(GHz) Maxi
Insertion loss	0.15*	$\sqrt{F}(\text{GHz})$ dB Maxi
RF leakage	- (NA)	- F(GHz)) dB Maxi
Voltage rating	335	Veff Maxi
Dielectric withstanding voltage	1000	Veff mini
Insulation resistance	5000	M Ω mini

ENVIRONMENTAL

Operating temperature	-55/+165	$^{\circ}\text{C}$
Hermetic seal	NA	Atm.cm3/s
Panel leakage	NA	

OTHER CHARACTERISTICS

Assembly instruction

Others :

*VSWR: up to 3 GHz; 3-6GHz, 1.35max

*Coaxial Transmission Line Only

*Slide type receptacle+Bullet+Snap type receptacle

Typical VSWR(Board to Board connection):

0-3GHz, 1.2max

Power handling (typical) :

>300W@2.7GHz at 25°C: >200W@2.7GHz at 85°C

Radial working angle: 3°min

Axial working range: 2mm

MECHANICAL CHARACTERISTICS

Center contact retention	
Axial force – Mating end	7 N mini
Axial force – Opposite end	7 N mini
Torque	NA N.cm mini

Recommended torque	
Mating	NA N.cm
Panel nut	NA N.cm

Mating life	100 Cycles mini
Weight	1,4020 g

Issue : 1107 A

In the effort to improve our products, we reserve the right to make changes judged to be necessary.


RADIAL

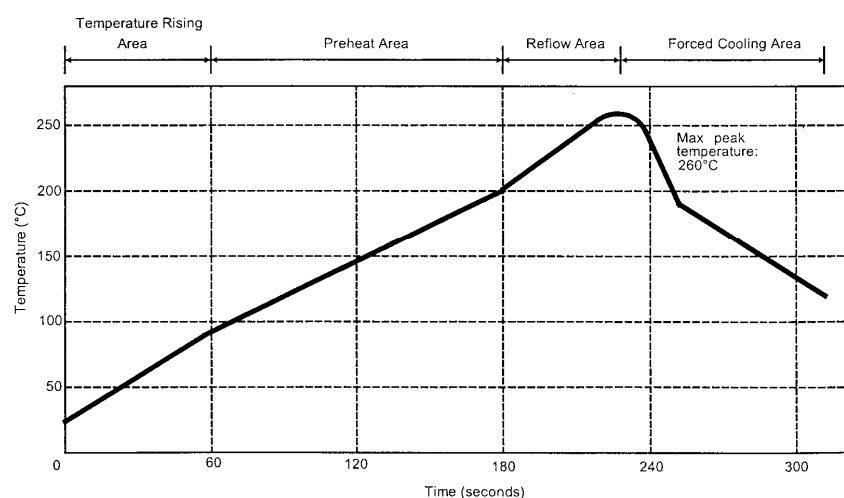
STRAIGHT MALE RECEPTACLE FOR SMT**SLIDE TYPE - REEL OF 500****R222.M00.740**

Series : SMP-MAX

SOLDER PROCEDURE

1. Deposit solder paste 'SnAg4Cu0.5' on mounting zone by screen printing application. We recommend a low residue flux.
We advise a thickness of 150 micromm (5.850 microinch). Verify that the edges of the zone are clean.
2. Placement of the receptacle on the mounting zone with an automatic machine of 'pick and place' type. A video camera is recommended for positioning of the component . Adhesive agents must not be used on the receptacle.
3. This process of soldering has been tested with convection oven .Below please find ,the typical profile to use.
4. The cleaning of printed circuit boards is not obliged .

Verification of solder joints and position of the component by visual inspection.

TEMPERATURE PROFILE

Parameter	Value	Unit
Temperature rising Area	1 - 4	°C/sec
Max Peak Temperature	260	°C
Max dwell time @260°C	10	sec
Min dwell time @235°C	20	sec
Max dwell time @235°C	60	sec
Temperature drop in cooling Area	-1 to - 4	°C/sec
Max dwell time above 100°C	420	sec

Issue : 1107 A

In the effort to improve our products, we reserve the right to make changes judged to be necessary.

RADIAL 

R222.M00.740Series : **SMP-MAX**

Technical drawing of a mechanical part with the following dimensions and features:

- Overall width: 6.7
- Overall height: 6.7
- Top-left corner radius: $\phi 4.5$
- Top-right corner radius: 2.3
- Bottom-left corner radius: 2.2
- Bottom-right corner radius: $\phi 2.8$
- Central circular feature: $\phi 1.1$
- Right side thickness: 0.86
- Top and bottom edge thickness: 0.2

The drawing includes hatching for different materials or sections: diagonal lines for the main body and cross-hatching for the corner radii.

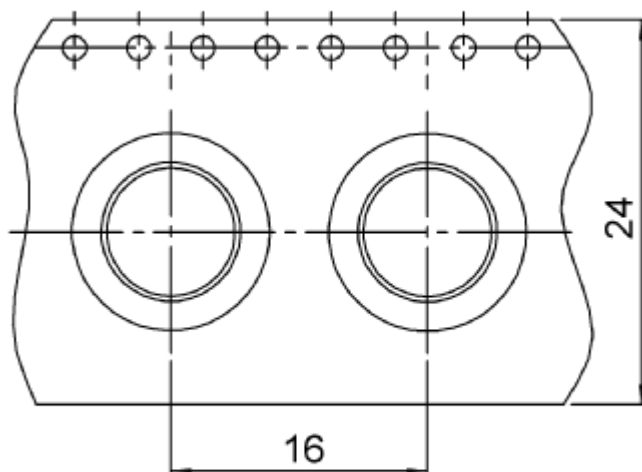
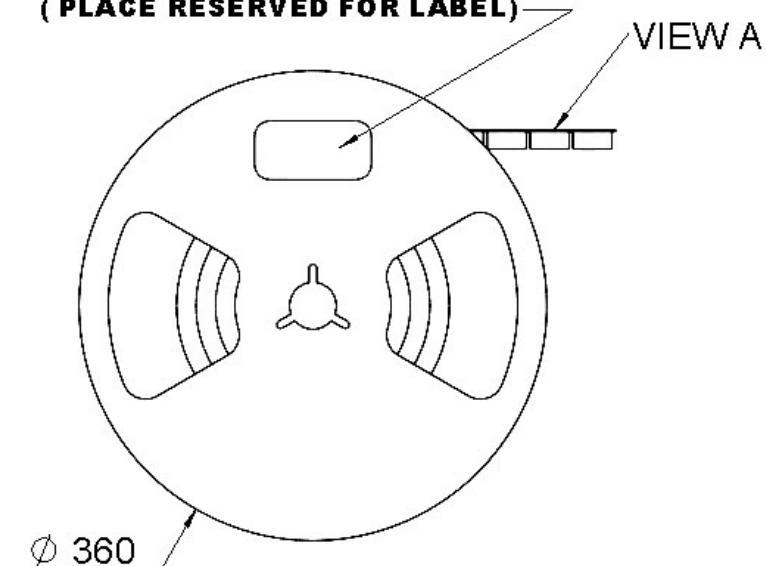
 Pattern

In the effort to improve our products, we reserve the right to make changes judged to be necessary.

RADIAL 

STRAIGHT MALE RECEPTACLE FOR SMT**SLIDE TYPE - REEL OF 500****R222.M00.740**

Series : SMP-MAX

PACKAGE**EMPLACEMENT RESERVE POUR
L' ETIQUETTE
(PLACE RESERVED FOR LABEL)**

VIEW A

Issue : 1107 A

In the effort to improve our products, we reserve the right to make changes judged to be necessary.

RADIAL 