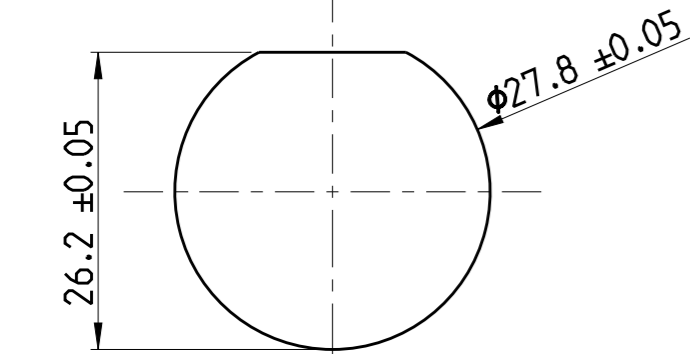
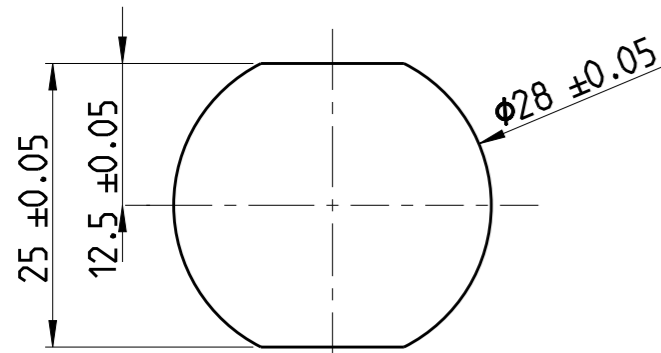
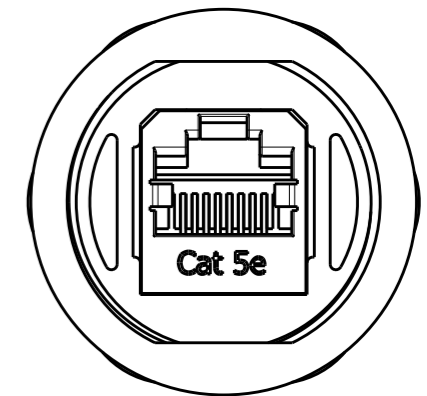
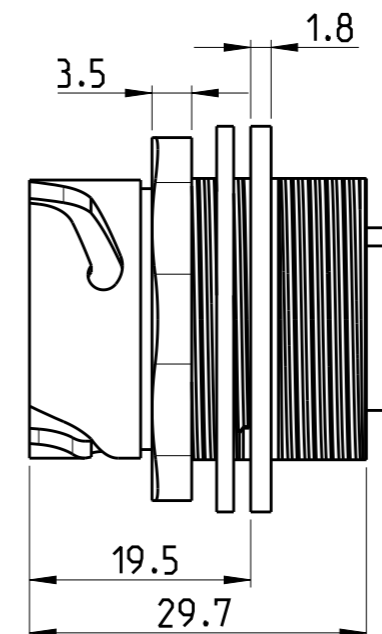
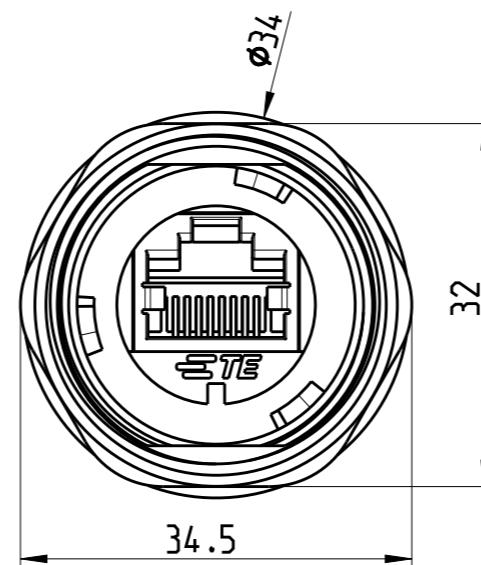
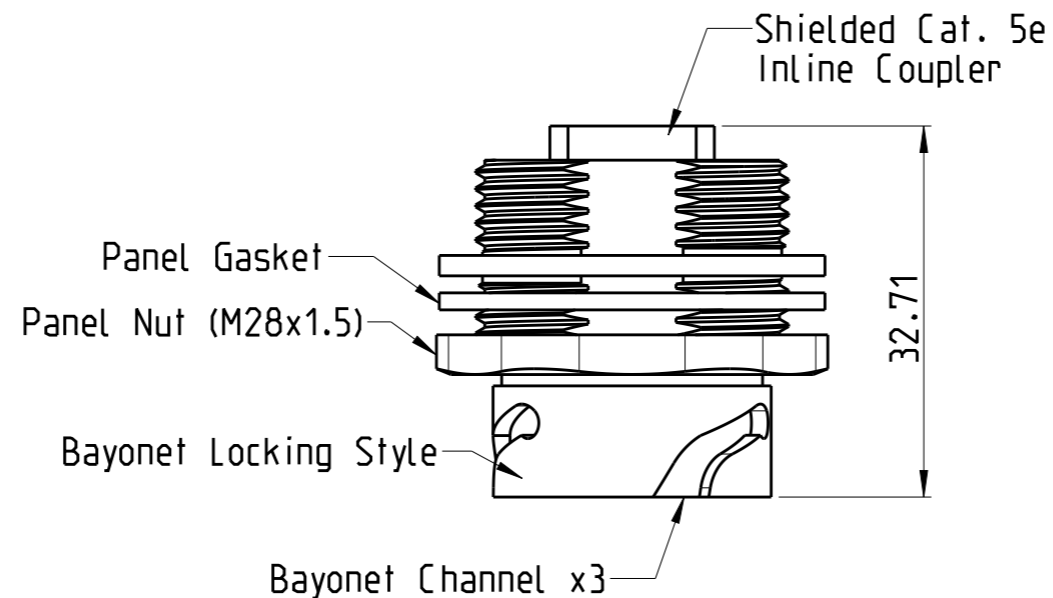


P	LTR	DESCRIPTION	DATE	DWN	APVD
	A	INITIAL RELEASE	19APR2019	SS	KMA
	B	ECR-19-018070	18NOV2019	SS	JK

Recommended Single-D
Panel CutoutRecommended Double-D
Panel Cutout

Notes:

1. Electrical Specifications:

- Meets EIA/TIA-568-B.2 Cat.5e Specification
- Contact Resistance: 20mOhm max.
- Insulation Resistance: 500MOhm min. @ 100 VDC
- Current Rating: 1.2A max. at 25°C
- Working Voltage: 72 VDC
- DWV: 1000 VDC/60s Contact to Contact, 1500 VDC/60s Contact to Metal Shell
- Operating Temperature: -40°C to +85°C

2. Material and Finish:

- Receptacle Housing: Zinc Die-Cast, Finish: Nickel Plated
- Panel Nut: Brass, Finish: Nickel Plated
- Panel Gasket: Silicon, Color: Transparent
- RJ45 Jack Metal Shell: Copper Alloy, Nickel Plated
- RJ45 Jack Plastic Housing: Glass filled PBT UL94 V-0, Color: Black
- RJ45 Jack Contacts: Phosphor Bronze, Finish: 50u" Gold min. over Nickel

3. Connector can be front or rear mounted to a maximum panel thickness of 3.2mm.

4. IP67 rated when covered or fully mated with the appropriate mating connector

5. RoHS compliant

6. Packaging Spec: 107-19763

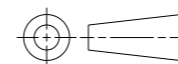
7. Material and Finish:

- Receptacle Housing: PBT UL 94 V-0, black
- Panel Nut: Brass, Finish: Nickel Plated
- Panel Gasket: Silicon, Color: Transparent
- RJ45 Jack Metal Shell: Copper Alloy, Nickel Plated
- RJ45 Jack Plastic Housing: Glass filled PBT UL94 V-0, Color: Black
- RJ45 Jack Contacts: Phosphor Bronze, Finish: 50u" Gold min. over Nickel

THIS DRAWING IS A CONTROLLED DOCUMENT.

DIMENSIONS:

mm



TOLERANCES UNLESS OTHERWISE SPECIFIED:

0 PLC	±0.50
1 PLC	±0.38
2 PLC	±0.25
3 PLC	±0.10
4 PLC	±
ANGLES	±3°

MATERIAL
SEE TABLEFINISH
SEE TABLE

DWN S. SHARMA 19APR2019

CHK K. MALCZYK 24APR2019

APVD J. de BRULIN 24APR2019

PRODUCT SPEC

-

APPLICATION SPEC

114-19162

WEIGHT -

CUSTOMER DRAWING

E81956

7

2355443-2

E81956

2

2355443-1

UL NO.

MATERIAL

TEPN

TE

TE Connectivity

NAME
JACK RECEPT. ASSY KIT
SHIELDED CAT 5e RJ45 COUPLER

SIZE CAGE CODE DRAWING NO RESTRICTED TO

A3 00779 C-2355443 -

SCALE 3:2 SHEET 1 OF 1 REV B