

* UNLESS OTHERWISE SPECIFIED TOLERANCES
ON DECIMAL IS: ANGLE ±5°
UNIT: MM X. ±0.38
X.X ±0.25

DIMENSIONS(mm/in)				
SIZE	A $\pm\frac{.50}{\pm0.02}$	B $\pm\frac{.50}{\pm0.02}$	C $\pm\frac{.50}{\pm0.02}$	D $\pm\frac{.25}{\pm0.01}$
9	31.20	39.90	15.00	24.99
	1.228	1.571	0.591	0.984
15	39.50	41.50	15.00	33.32
	1.555	1.634	0.591	1.312
25	53.40	48.60	15.00	47.04
	2.102	1.913	0.591	1.852
37	69.70	53.60	15.00	63.50
	2.744	2.110	0.591	2.500

MATERIAL: DIE-CAST ZINC ALLOY
PLATING: BLACK ENAMEL
JACKSCREWS: STEEL, BLACK OXIDE
M3 HOODSCREWS: STEEL, BLACK OXIDE
COMPRESSION INSERT: ABS UL 94-HB
COMPRESSION SPRING: STEEL, NICKEL PLATED
OPERATING TEMP: -40°C TO +120°C

BACKSHELL KIT INCLUDES:
(2)BACKSHELL HALVES
(2)4-40 THUMBSCREWS
(2)HOUSING SCREWS
(1)SET OF COMPRESSION INSERTS-VARIOUS SIZES
DIAMETERS:4mm(.157"),5mm(.197"),7mm(.276"),9mm(.354")

**NOTE: 3 in-lbs IS RECOMMEND TORQUE FOR HOUSING SCREWS

970-YYY-040R011

SERIES _____
POSITIONS _____
009
015
025
037
MATERIAL _____
040 = ZINC
COLOR _____
01 = BLACK
PUT-UPS _____
1 = KIT

RoHS COMPLIANT

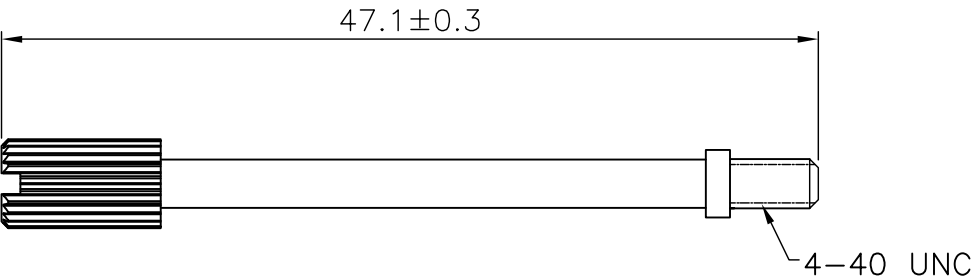
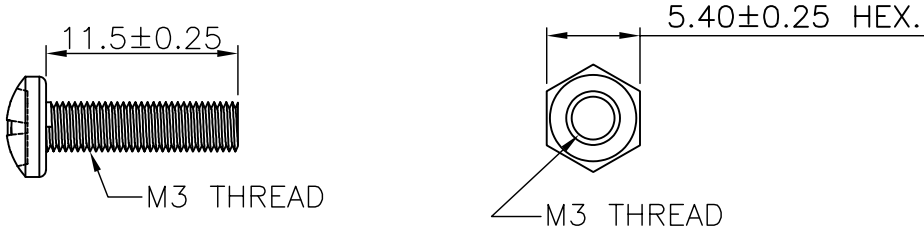
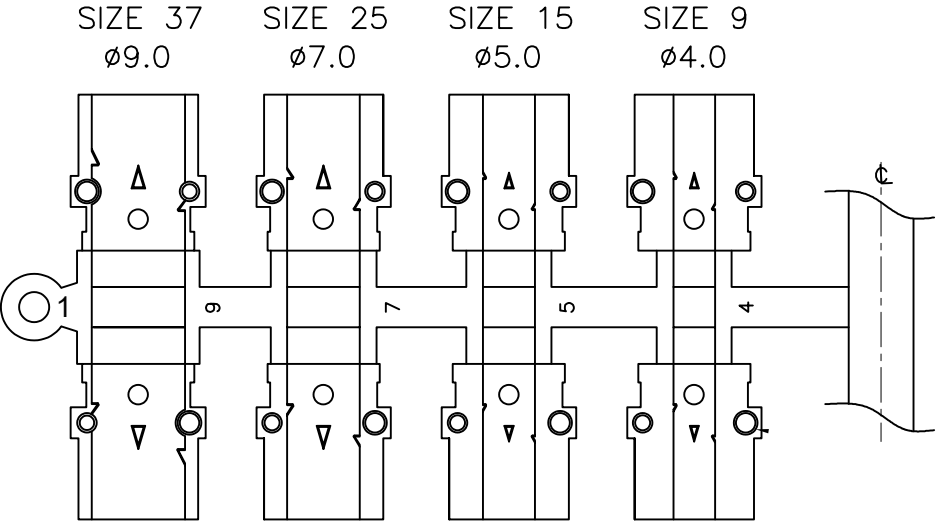


THESE DRAWINGS AND SPECIFICATIONS ARE THE PROPERTY OF NorComp AND SHALL NOT BE REPRODUCED, COPIED OR USED AS THE BASIS FOR THE MANUFACTURE OR SALE OF APPARATUS WITHOUT WRITTEN PERMISSION.

DRAWN: PAM JENKINS
DATE: 06/10/2005

UNITS = "as specified" DO NOT SCALE FROM DRAWING

NorComp	SCALE: NTS	SHEET 1 OF 2	REV 11
	DWG NO. 970-YYY-040R011		



RoHS COMPLIANT



THESE DRAWINGS AND SPECIFICATIONS ARE THE PROPERTY OF NorComp AND SHALL NOT BE REPRODUCED, COPIED OR USED AS THE BASIS FOR THE MANUFACTURE OR SALE OF APPARATUS WITHOUT WRITTEN PERMISSION.

DRAWN:
PAM JENKINS

DATE:
06/10/2005

UNITS = mm

DO NOT SCALE FROM DRAWING

NorComp

SCALE:
NTS

SHEET OF
2 2

REV
11

DWG NO.

970-YYY-040R011