

Actuator

14-
570.0360



<https://eao.com/p/14-570.0360>

Your product:



14-570.0360 Actuator

FRONT

Front bezel material:	Aluminium
Front form:	round
Front bezel colour:	Nature

MOUNTING

Mounting type:	Panel mounting
----------------	----------------

OPERATING-/INDICATION PART

Lever shape:	long
Lever colour:	Black
Lever material:	plastic

ELECTRICAL CHARACTERISTICS

Electric strength:	3000 VAC, 50 Hz, 1 min. between all terminals and earth, according to EN/IEC 61058-1
Protection class:	II
Contacts:	2 NO
Switching voltage and switching current:	100 mA at 42 VAC/VDC

MECHANICAL CHARACTERISTIC

Wire cross section:	Max. wire diameter 2 wires of 1 mm Max. wire cross-section of stranded cable 2 x 0.75 mm ²
Switching positions:	2 positions

Tightening torque:	Fixing nut max. 0.25 Nm
Operating force:	3 N ... 4 N, depending on the number of switching elements
Mechanical lifetime:	1 Mio. cycles of operation
Contact material:	Gold
Switching action:	Rest - Maintained
Terminal:	Universal terminal, 2 x 0.5 mm
Switching angle:	90° right
Weight:	0.025 kg
Switching system:	Low-level element
Switching system:	<p>This low-level switching element was designed for switching low powers in electronic circuits. The mechanism assures reliable switching of loads ranging from a few $\mu\text{A}/\mu\text{V}$ up to 100 mA/ 42 VAC/DC.</p> <p>Single-break momentary contact, as normally open or normally closed with 4 independent points of contact. 2 momentary contacts per switching element; combination of normally open and normally closed is possible.</p> <p>Special features are the long life, extremely short rebound time and stable contact resistance.</p>

AMBIENT CONDITION

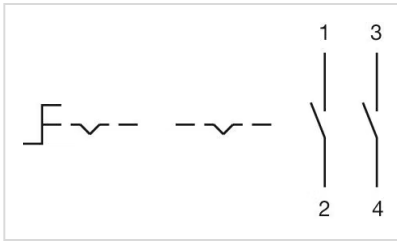
Operating temperature:	– 25 °C ... + 55 °C, mounted as a block, make sure the heat can escape freely
Storage temperature:	– 40 °C ... + 85 °C
IP front protection:	IP67, according to DIN EN 60529
Shock resistance:	Max. 150 m / s ² , pulse width 11 ms, 3-axis, (semi-sinusoidal as per EN IEC 60068-2-27)

CERTIFICATE

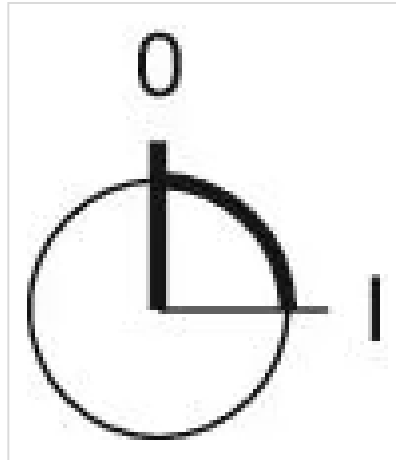
Conformities:	2011 / 65 / EC (RoHS), 2014 / 35 / EU (LVD)
----------------------	---

OTHER

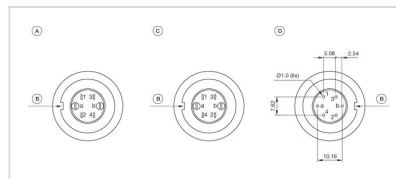
Hints:	The colour of anodised aluminium parts can vary due to technical production reasons
Short Description:	Actuator, non illuminative, Black, long, round, Nature, Aluminium, anodised, 2 NO, Rest - Maintained, Universal terminal, 2 x 0.5 mm, IP67, according to DIN EN 60529
Wiring diagrams:	



Switching positions:

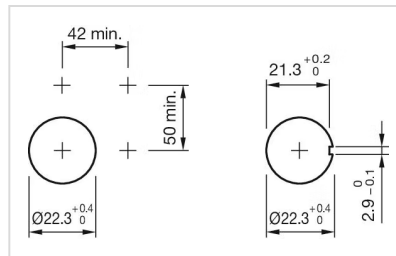


Component layouts:

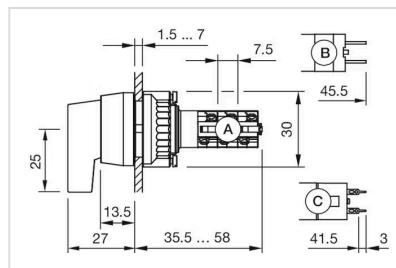


A = Terminals (rear side)
B = Anti twist device
C = Diode block
D = Drilling plan (component side)

Mounting cut-outs:



Dimension drawings:



A = Solder terminal
B = Plug-in terminal 2.8 x 0.5 mm
C = Universal terminal 2.0 mm x 0.5 mm