

## FEATURES AND SPECIFICATIONS

### Features and Benefits

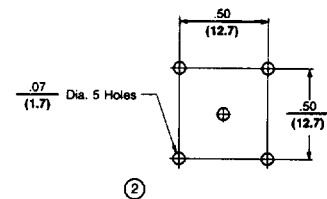
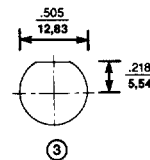
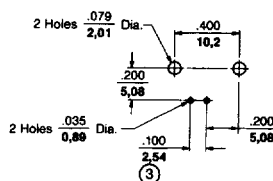
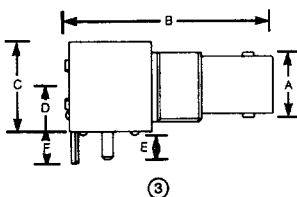
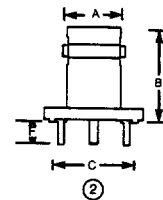
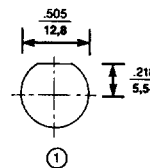
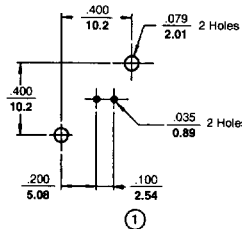
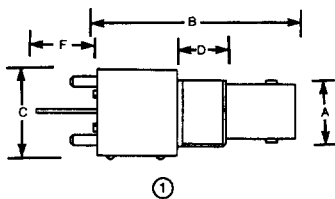
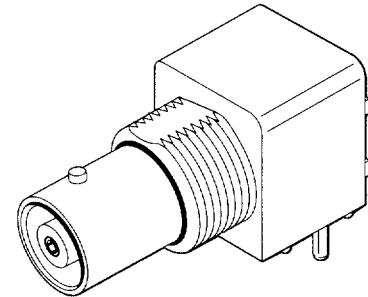
- MIL-C-39012 compatible
- Quick connect-disconnect
- 50 and 75Ω versions available

See BNC and TNC Specifications Table on Page R-2  
For More Information

# molex® RF Coaxial Connectors BNC Series

## 73131/73133/73137/ 73138

## PCB Jack Receptacle Vertical and Right Angle



## ORDERING INFORMATION AND DIMENSIONS

Order No.	Contact Plating	Diagram	Style	Dimension						Features	Dielectric Materials
				A	B	C	D	E	F		
73131-5003	Gold	1	Vertical	11.00 (.433)	35.44 (1.395)	15.90 (.625)	8.64 (.340)	4.10 (.161)	10.30 (.405)	Black Molded Body	Polypropylene
73131-5005	Tin	1	Vertical	11.00 (.433)	35.44 (1.395)	15.90 (.625)	8.64 (.340)	4.10 (.161)	10.30 (.405)	Black Molded Body	Polypropylene
73133-5001	Silver	2	Vertical	11.00 (.433)	16.80 (.661)	17.40 (.677)			3.90 (.154)	Brass Body	Teflon*
73133-5003	Gold	2	Vertical	11.10 (.437)	16.80 (.661)	17.40 (.677)			3.90 (.154)	Brass Body	Teflon
73137-5003	Gold	3	Right Angle	11.00 (.433)	35.18 (1.385)	13.20 (.519)	6.91 (.272)	4.10 (.161)	4.75 (.187)	Black Molded Body Low Profile	Polypropylene
73137-5005	Tin	3	Right Angle	11.00 (.433)	35.18 (1.385)	13.20 (.519)	6.91 (.272)	4.10 (.161)	4.75 (.187)	Black Molded Body Low Profile	Polypropylene
73137-5013	Gold	3	Right Angle	11.00 (.433)	35.18 (1.385)	13.20 (.519)	6.91 (.272)	4.10 (.161)	4.75 (.187)	White Molded Body Low Profile	Polypropylene
73137-5015	Tin	3	Right Angle	11.00 (.433)	35.18 (1.385)	13.20 (.519)	6.91 (.272)	4.10 (.161)	4.75 (.187)	White Molded Body Low Profile	Polypropylene
73138-5003	Gold	3	Right Angle	11.00 (.433)	35.44 (1.395)	15.90 (.625)	8.59 (.338)	4.10 (.161)	4.75 (.187)	Black Molded Body	Polypropylene
73138-5005	Tin	3	Right Angle	11.00 (.433)	35.44 (1.395)	15.90 (.625)	8.59 (.338)	4.10 (.161)	4.75 (.187)	Black Molded Body	Polypropylene
73138-5013	Gold	3	Right Angle	11.00 (.433)	35.44 (1.395)	15.90 (.625)	8.59 (.338)	4.10 (.161)	4.75 (.187)	White Molded Body	Polypropylene
73138-5015	Tin	3	Right Angle	11.00 (.433)	35.44 (1.395)	15.90 (.625)	8.59 (.338)	4.10 (.161)	4.75 (.187)	White Molded Body	Polypropylene
73138-5033	Gold	3	Right Angle	11.00 (.433)	35.44 (1.395)	15.90 (.625)	8.59 (.338)	4.10 (.161)	4.75 (.187)	All Die-Cast Body	Polypropylene

\* Teflon is a registered trademark of E.I. DuPont de Nemours and Company

Note: Nut and washer are included with each connector