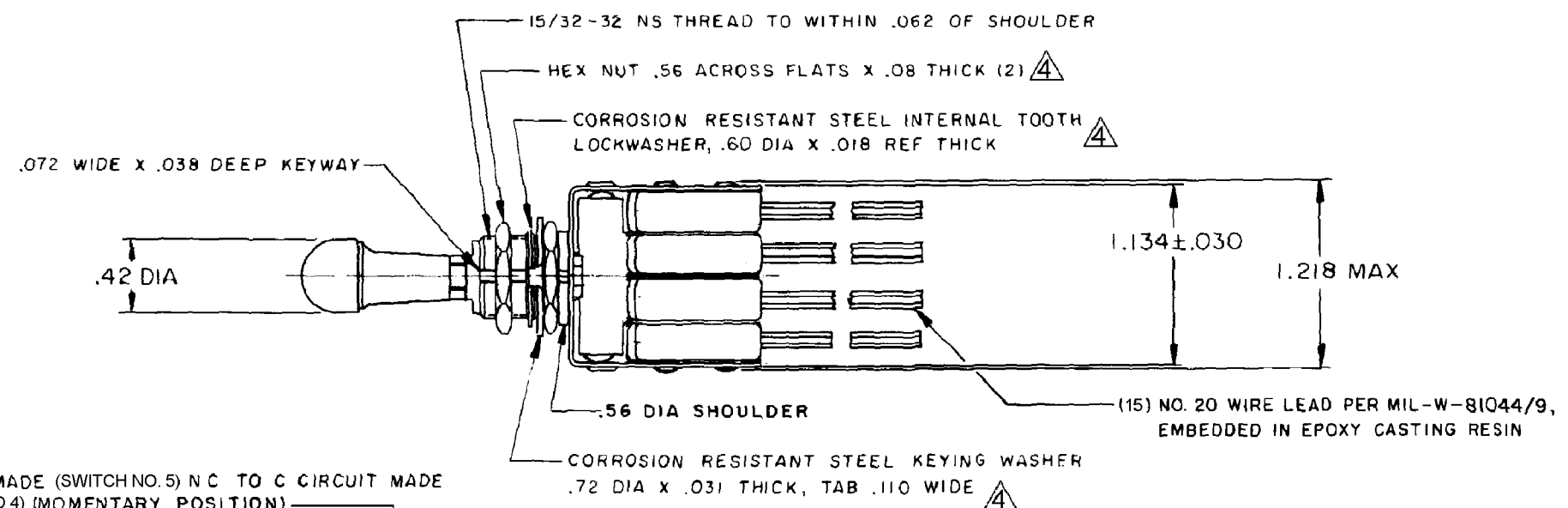


**ASSEMBLY-
 TOGGLE SWITCH**

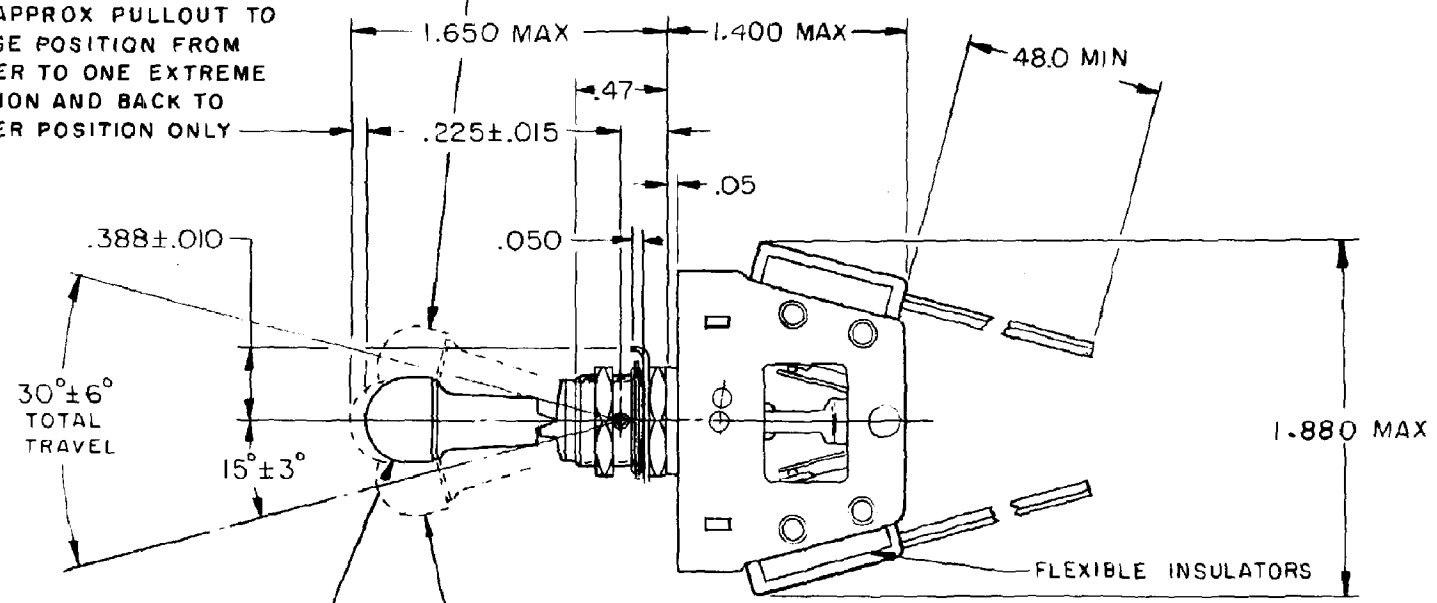
CATALOG LISTING
22AT63-4-M

22AT63-4-M
 PAGE 1 OF 1
 M
 DRAWING NUMBER
 8
 ISSUE
 REVISIONS
 A 0020596
 TRF 31MAR06
 RASTER
 DRAWN
 31MAR06
 TRF



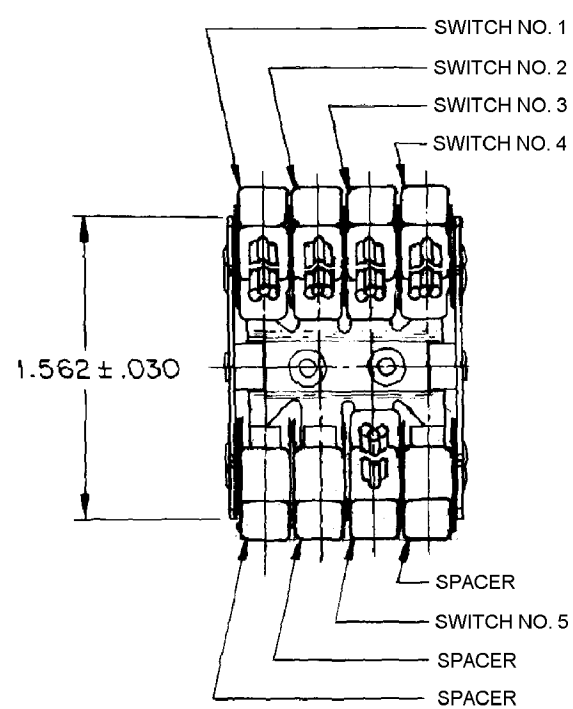
NO TO C CIRCUITS MADE (SWITCH NO. 5) NC TO C CIRCUIT MADE (SWITCHES NO. 1, 2, 3 AND 4) (MOMENTARY POSITION)

.090 APPROX PULLOUT TO CHANGE POSITION FROM CENTER TO ONE EXTREME POSITION AND BACK TO CENTER POSITION ONLY



NC TO C CIRCUIT MADE (ALL SWITCHES) (MAINTAINED POSITION)

NO TO C CIRCUIT MADE (SWITCHES NO. 1, 2, 3 AND 4) NC TO C CIRCUIT MADE (SWITCH NO. 5) (MAINTAINED LOCKED POSITION)



THIS DRAWING COVERS A PROPRIETARY ITEM AND IS THE PROPERTY OF MICRO SWITCH, A DIVISION OF MINNEAPOLIS-HONEYWELL REGULATOR CO. THIS DRAWING IS NOT TO BE COPIED OR USED WITHOUT THE APPROVAL OF MICRO SWITCH.

CHARACTERISTICS	ELECTRICAL DATA	SCALE FULL
	CONTACT ARRANGEMENT SPDT (5)	DO NOT SCALE PRINT
	250 VAC ----- 5 AMP	UNLESS OTHERWISE NOTED
	30 VOLTS DC RATING	DIMENSIONS ARE IN INCHES
INDUCTIVE ----- SEA LEVEL ----- 3 AMP	50,000 FT ----- 2.5 AMP	TOLERANCES ARE:
RESISTIVE ----- SEA LEVEL ----- 5 AMP	50,000 FT ----- 5 AMP	ONE PLACE (.0) \pm .030
MAXIMUM INRUSH ----- 24 AMP		TWO PLACE (.00) \pm .015
		THREE PLACE (.000) \pm .005
		ANGLES \pm
		WEIGHT .65 LB MAX

NOTES

- 1 - SWITCHES DO NOT NECESSARILY OPERATE SIMULTANEOUSLY
- 2 - UNIT INCLUDES 11SM1-T TYPE BASIC SWITCH (5)
- 3 - LEAD WIRES MARKED AT APPROXIMATELY 3.0 INCH INTERVALS WITH SWITCH NUMBER AND CIRCUIT IDENTIFICATION (1 - NO), (1 - NC), (1 - C), (2 - NC), (2 - C), (2 - NO), (3 - C), (3 - NC), (3 - NO), (4 - C), (4 - NC), (4 - NO), (5 - C), (5 - NC) AND (5 - NO)
- \triangle HARDWARE FURNISHED ASSEMBLED WITH SWITCH OR IN PACKET PER MIL-PRF-8805
- 5 - REPLACEMENT MOUNTING HARDWARE PACKET 15PA312-AT