

10139781-AA B C D E G V F F

AA	POSITION
04	2X20
06	2X30
08	2X40
10	2X50
12	2X60
14	2X70
16	2X80

B	FOR PLUG, SEE DWG. NO.10139085	
COMBINATION OF MATED HEIGHT	Plug 1	Plug 4
Recep 1		
Recep 2		
Recep 3		
Recep 4		

G	PACKAGING
/	STANDARD, NOT PRINT DATE CODE
P	PRINT DATE CODE


E	PACKAGING
1	TRAY WITH METAL CAP
2	T&R WITH METAL CAP
Q	T&R WITHOUT CAP
6	T&R WITH KAPTON TAPE

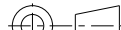


D	POLARIZATION PEG
0	YES
2	NO

MANDATORY CODE	V
STANDARD, NOT MANDATORY P/N	/
ONLY FOR DEDICATED CUSTOMER	T

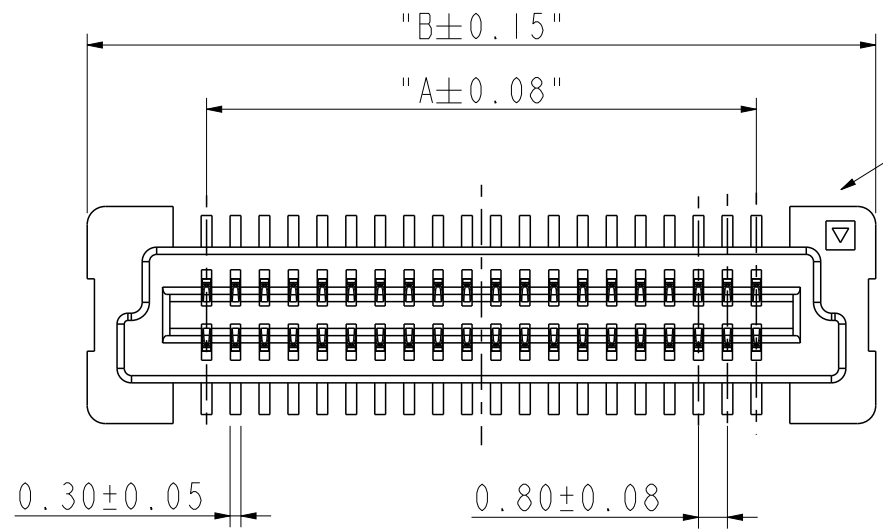
C	PLATING: CONTACT AREA / SOLDER TAIL AREA	FF
4	GOLD 0.2um MIN / PURE MATT TIN 2.5um MIN NICKEL UNDERPLATE OVERALL 1.27um.	LF
5	GOLD 0.38um MIN / MATT PURE TIN 2.5um MIN NICKEL UNDERPLATE OVERALL 1.27um MIN	LF
6	GOLD FLASH OVER PALLADIUM-NICKEL 0.69um/PURE MATT TIN NICKEL UNDERPLATE OVERALL 1.27um.	LF
D	GOLD 0.38um MIN / GOLD FLASH NICKEL UNDERPLATE OVERALL 1.27um MIN	LF

NOTES:

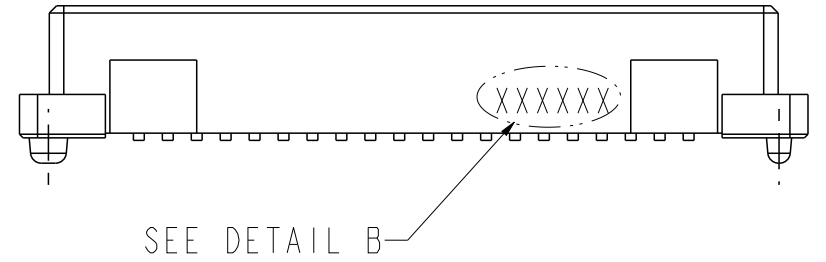
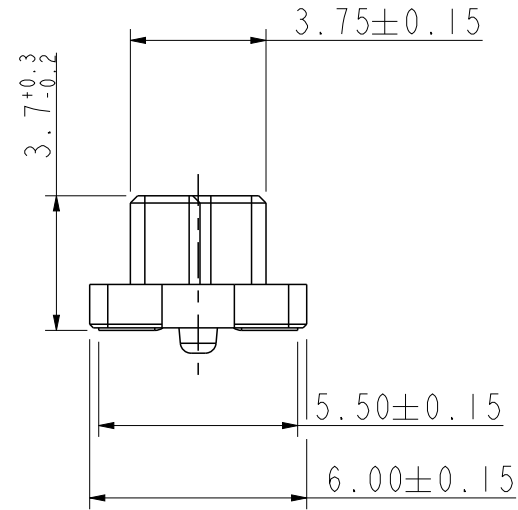
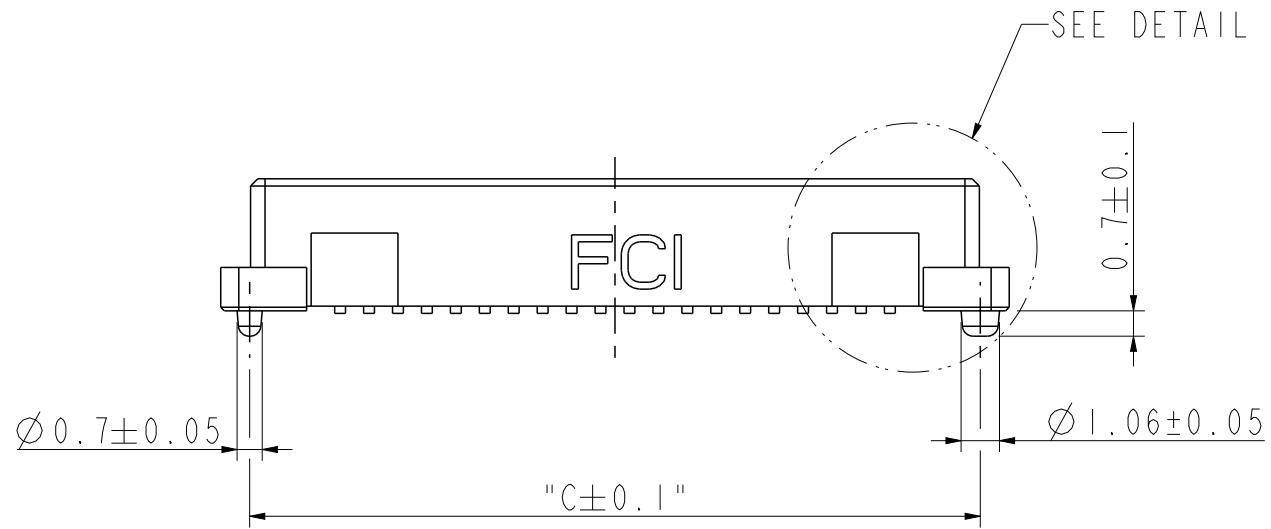
- MATERIAL
HOUSING: LCP UL,NATURAL 94V-0
TERMINAL: COPPER ALLOY
- PLATING: AS SHOWN IN TABLE.
- PRODUCT SPEC PLEASE REFER TO GS-12-1354 .
- SEE GS-15-551 AND GS-14-816 FOR THE DETAILS OF PACKAGING.
- PACKAGING OPTION 2: "NOT ALL SIZES AVAILABLE; CHECK WITH FACTORY".
- THIS PRODUCT MEETS THE EUROPEAN UNION DIRECTIVES AND OTHER COUNTRY REGULATIONS AS DESCRIBED IN GS-22-008.
- THE HOUSING WITH WITHSTAND EXPOSURE UP TO 260° PEAK TEMPERATURE FOR 30 SECONDS IN A CONVECTION, INFRA-RED OR VAPOR REFLOW OVEN.
- A  SYMBOL WILL BE NEXT TO ANY DIMENSION, VIEW OR NOTE WHICH HAS BEEN MODIFIED WITH THE CURRENT DRAWING REVISION.

spec ref		-		dr	Eric Huang	2016/08/02	projection		mm		size	A3	scale	1:1	
tolerance std	TOLERANCES UNLESS OTHERWISE SPECIFIED			eng	Bob Gu	2020/06/28					ecn no	ELX-N-37512-1			
				chr	-	-									
ISO 406				appr	Tim Yao	2020/07/02	product family		-	rel level	Released				
surface		linear	0.X	±0.3	Amphenol FCi	title	BERGSTAK+ 0.8mm				dwg no	10139781		rev	H
			0.XX	±0.15											
			0.XXX	±0.08											
ISO 1302		angular	0°	±2°		cat. no.	-	Product - Customer Drw				sheet 1 of 7			

PRODUCT NO.	NUMBER OF POSITIONS	DIMENSION		
		A	B	C
10139781-041*****	2X20	15.2	21.8	20.2
10139781-061*****	2X30	23.2	29.8	28.2
10139781-081*****	2X40	31.2	37.8	36.2
10139781-101*****	2X50	39.2	45.8	44.2
10139781-121*****	2X60	47.2	53.8	52.2

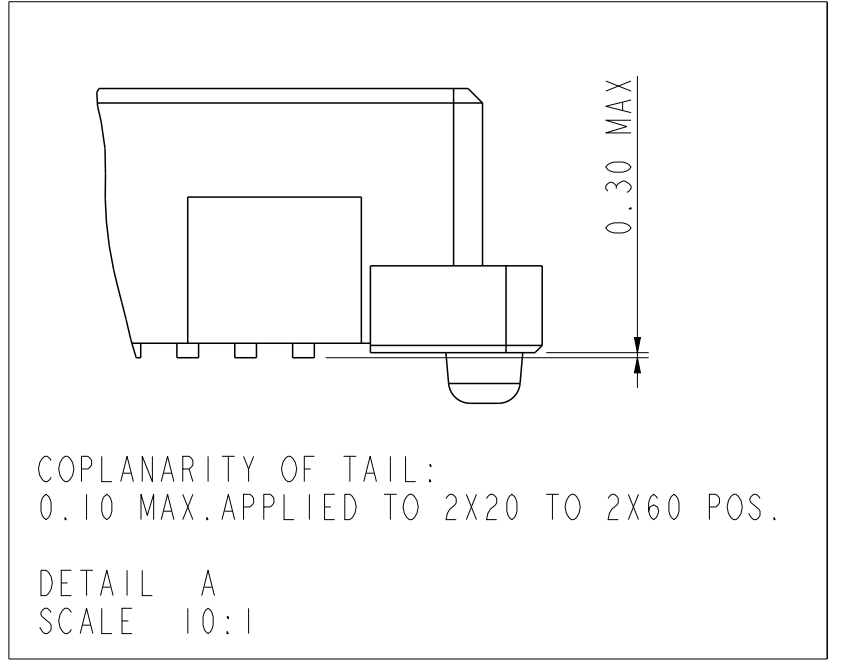


POSITION #1
INDICATOR


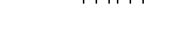


DATE CODE: XXXXXX
DAY(01~31)
MONTH(01~12)
YEAR(00~99)

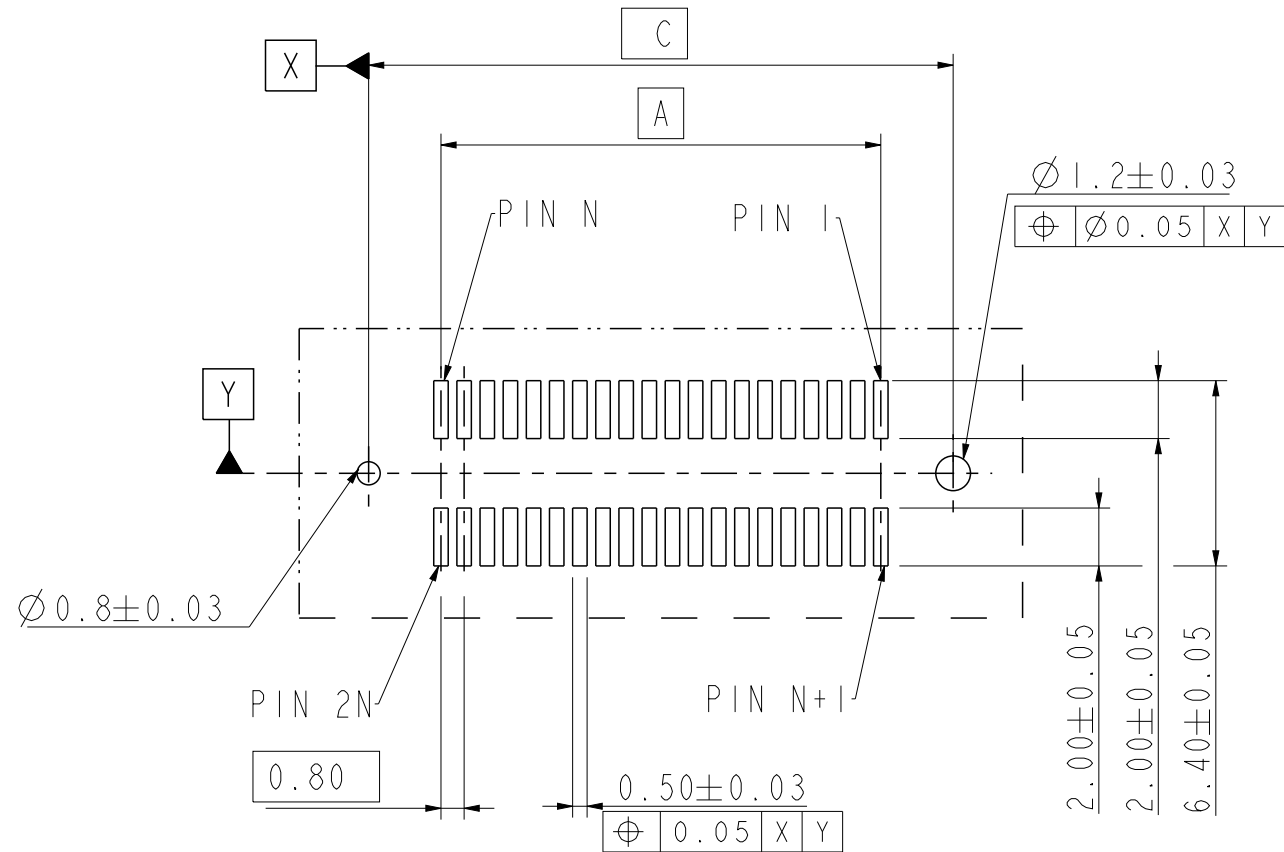
DETAIL B
SCALE 5:1



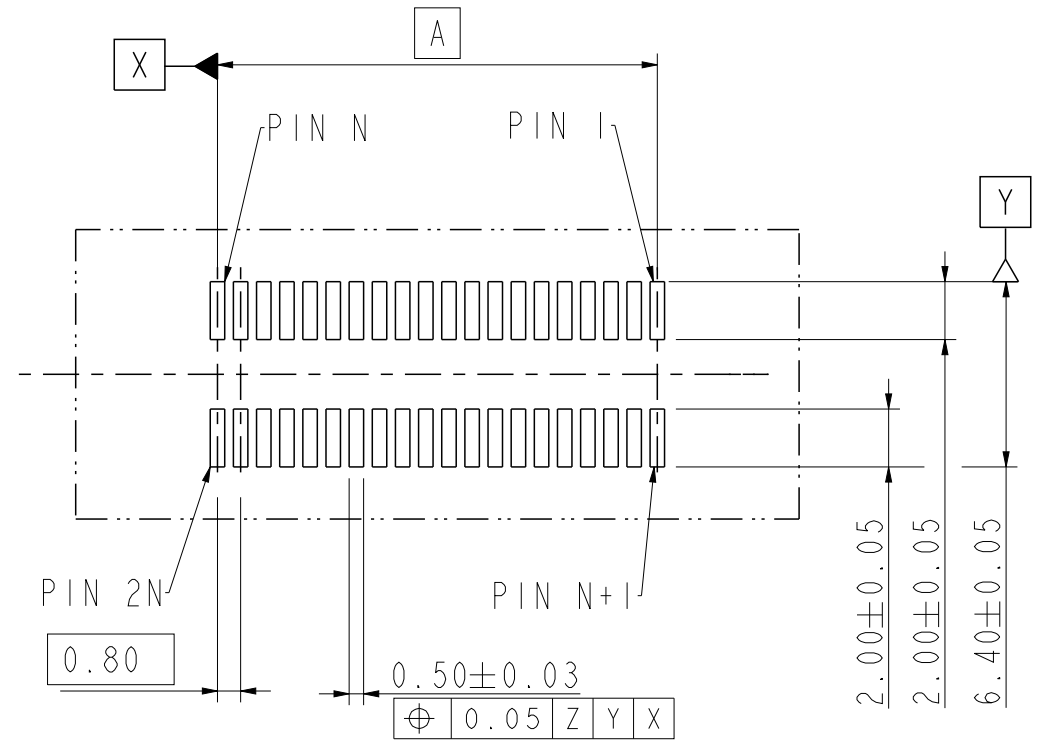
RECEPTACLE 1

spec ref		-		dr		Eric Huang	2016/08/02	<div>projection</div> <div></div>	<div>mm</div> <div></div>	size	A3	scale	1:1		
tolerance std	TOLERANCES UNLESS OTHERWISE SPECIFIED			eng		Bob Gu	2020/06/28			ecn no	ELX-N-37512-1				
				chr		-	-								
ISO 406				appr		Tim Yao	2020/07/02	product family		-	rel level		Released		
ISO 1101															
surface	linear	0.X		±0.3		Amphenol FCi		title	BERGSTAK+ 0.8mm			dwg no	10139781		rev
		0.XX		±0.15											
		0.XXX		±0.08											
	ISO 1302	angular	0°		±2°		cat. no.					-	Product - Customer Drw		

RECEPTACLE 1



RECOMMENDED PCB LAYOUT WITH PEGS
FOR NO. OF POSITION 2X20 TO 2X60



RECOMMENDED PCB LAYOUT WITHOUT PEGS
FOR NO. OF POSITION 2X20 TO 2X60

spec ref -				dr Eric Huang		2016/08/02		<div>projection</div> <div></div>	<div>mm</div> <div></div>	size A3	scale 1:1		
tolerance std				eng Bob Gu		2020/06/28				ecn no ELX-N-37512-1			
ISO 406				chr -		-				rel level Released			
ISO 1101				appr Tim Yao		2020/07/02				product family -			
TOLERANCES UNLESS OTHERWISE SPECIFIED				Amphenol FCI		title BERGSTAK+ 0.8mm				dwg no 10139781		rev H	
linear						RECEPTACLE CONN							
0.X ±0.3													
0.XX ±0.15													
0.XXX ±0.08													
surface ISO 1302						cat. no. -		Product - Customer Drw				sheet 3 of 7	
angular 0° ±2°													

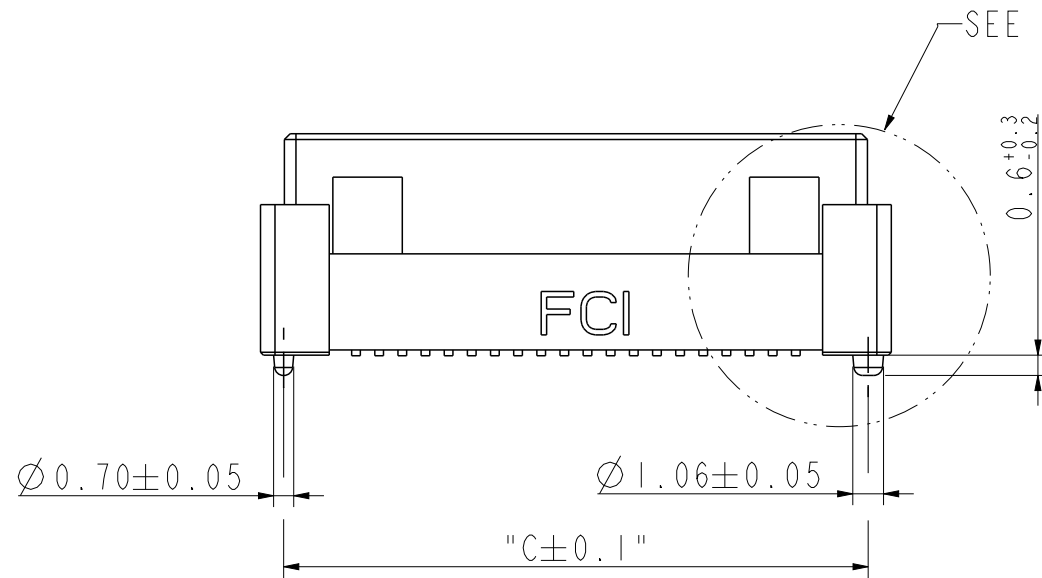
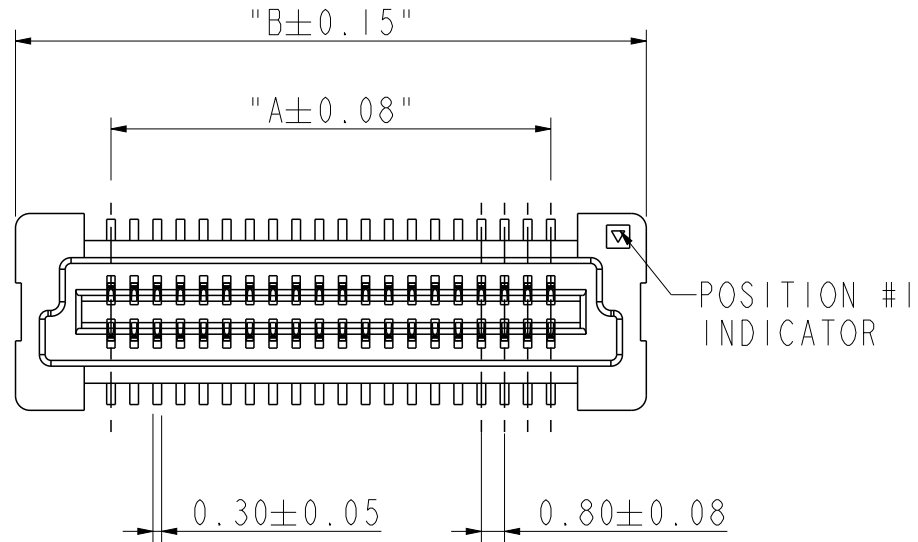
A

B

C

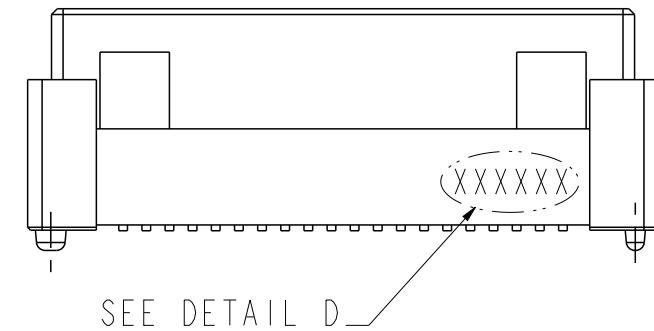
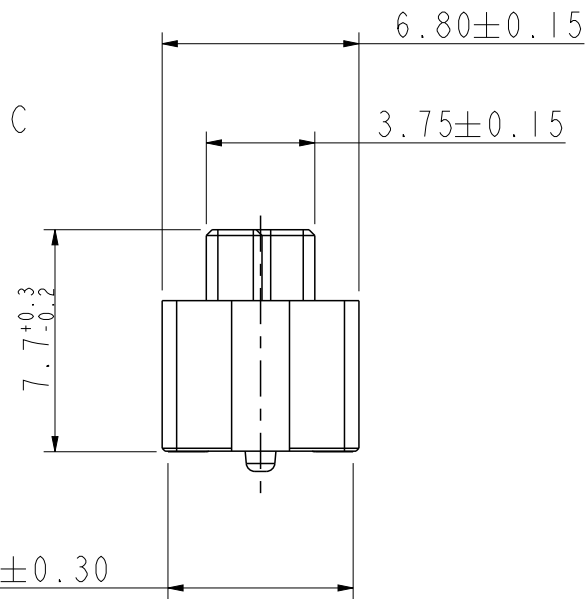
D

PRODUCT NO.	NUMBER OF POSITIONS	DIMENSION		
		A	B	C
10139781-042*****	2X20	15.2	21.8	20.2
10139781-062*****	2X30	23.2	29.8	28.2
10139781-082*****	2X40	31.2	37.8	36.2
10139781-102*****	2X50	39.2	45.8	44.2
10139781-122*****	2X60	47.2	53.8	52.2

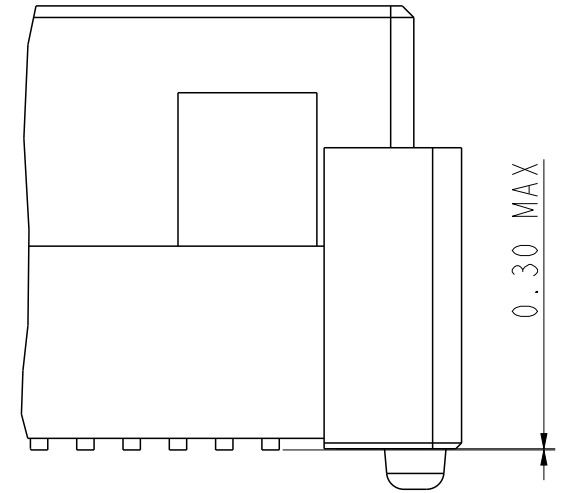


DATE CODE: XXXXXX
DAY(01~31)
MONTH(01~12)
YEAR(00~99)

DETAIL D
SCALE 5:1



COPLANARITY OF TAIL:
0.10 MAX. APPLIED TO 2X40 AND 2X60 POS.
DETAIL C
SCALE 8:1



RECEPTACLE 2

spec ref -				dr Eric Huang	2016/08/02	<div>projection</div> <div></div> <div>mm</div> <div></div>	size A3	scale 1:1	
tolerance std ISO 406 ISO 1101	TOLERANCES UNLESS OTHERWISE SPECIFIED			eng Bob Gu	2020/06/28		ecn no ELX-N-37512-1		
				chr -	-				
				appr Tim Yao	2020/07/02			product family -	rel level Released
surface <div>✓</div> ISO 1302	linear	0.X	±0.3	Amphenol FCi	title BERGSTAK+ 0.8mm RECEPTACLE CONN	dwg no 10139781	rev H		
		0.XX	±0.15						
		0.XXX	±0.08						
	angular	0°	±2°					cat. no. -	Product - Customer Drw

A

B

C

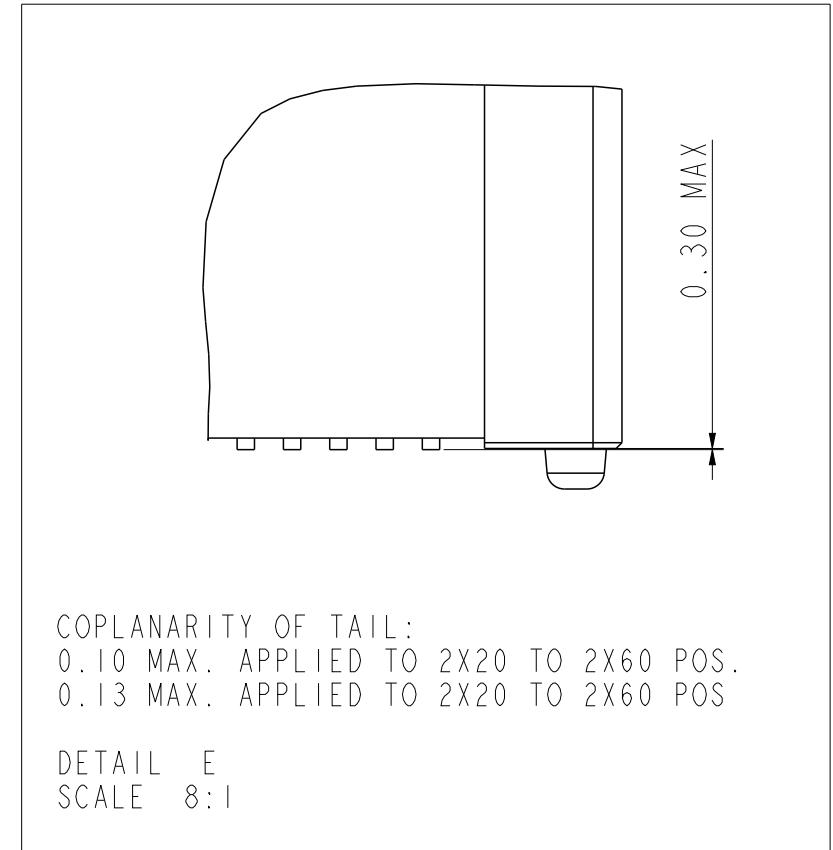
D

PRODUCT NO.	NUMBER OF POSITIONS	DIMENSION		
		A	B	C
10139781-043*****	2X20	15.2	21.8	20.2
10139781-063*****	2X30	23.2	29.8	28.2
10139781-083*****	2X40	31.2	37.8	36.2
10139781-103*****	2X50	39.2	45.8	44.2
10139781-123*****	2X60	47.2	53.8	52.2
10139781-143*****	2X70	55.2	61.8	60.2
10139781-163*****	2X80	63.2	69.8	68.2

DATE CODE: XXXXXX

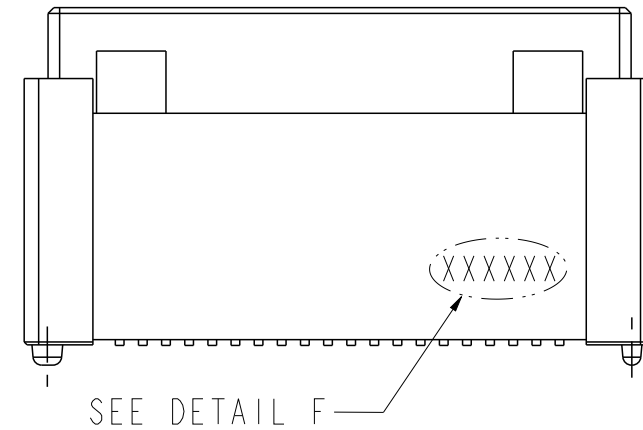
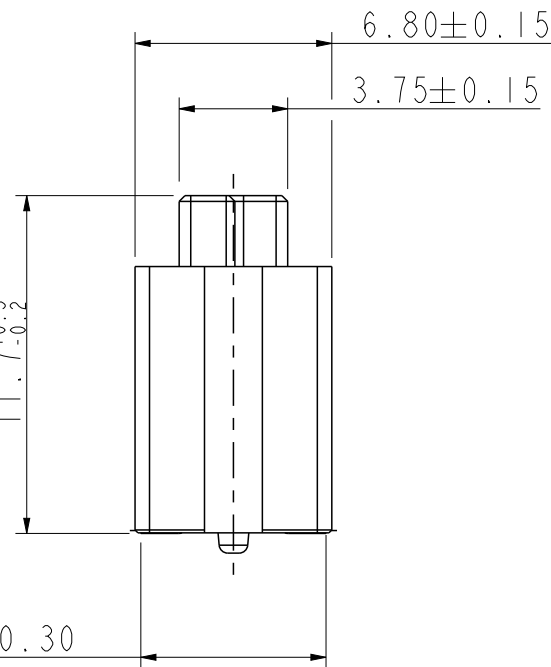
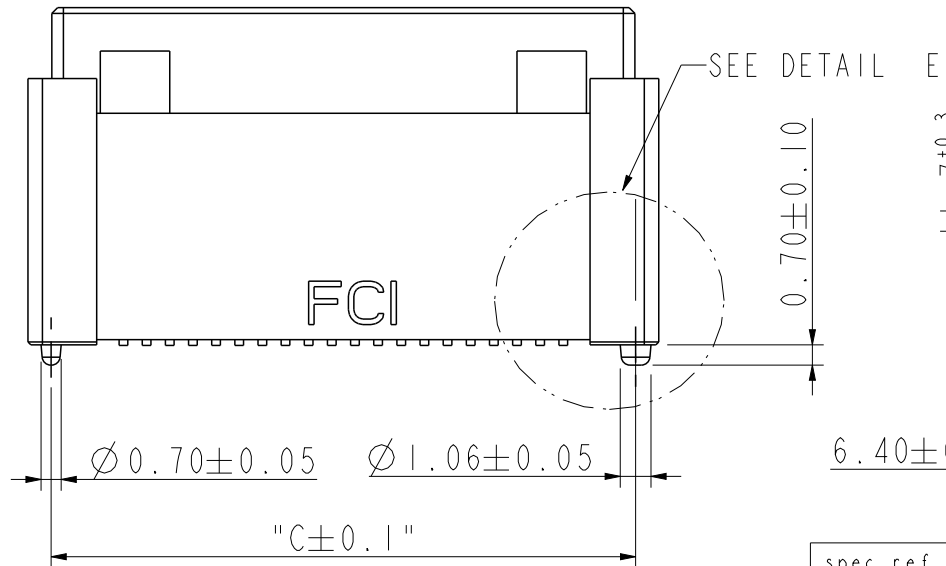
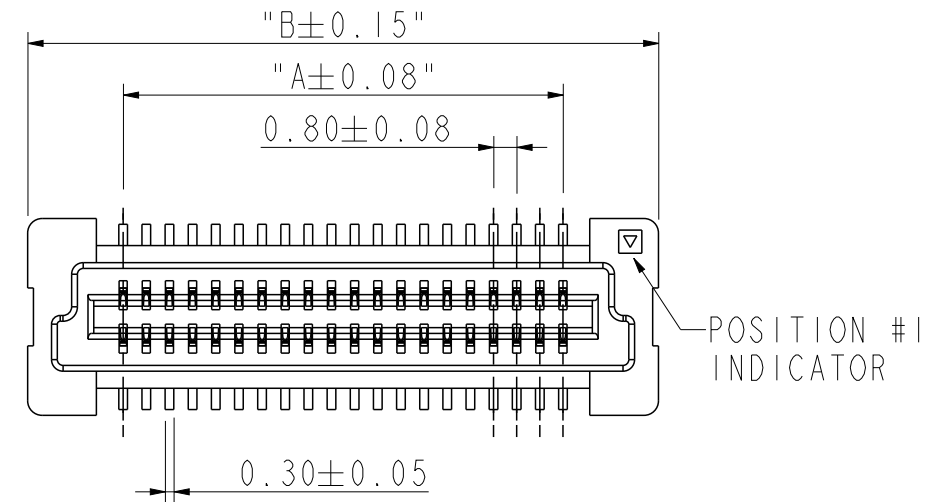
DAY(01~31)
MONTH(01~12)
YEAR(00~99)

DETAIL F
SCALE 5:1



COPLANARITY OF TAIL:
0.10 MAX. APPLIED TO 2X20 TO 2X60 POS.
0.13 MAX. APPLIED TO 2X20 TO 2X60 POS

DETAIL E
SCALE 8:1



spec ref	-	dr	Eric Huang	2016/08/02	projection	mm	size	A3	scale	4:1
tolerance std	ISO 406 ISO 1101	eng	Bob Gu	2020/06/28	chr	-	ecn no	ELX-N-37512-1	rel level	Released
surface	ISO 1302	appr	Tim Yao	2020/07/02	product family	-	cat. no.	-	Product - Customer Drw	sheet 5 of 7
linear	0.X ±0.3 0.XX ±0.15 0.XXX ±0.08	angular	0° ±2°	Amphenol FCI	BERGSTAK+ 0.8mm RECEPTACLE CONN	dwg no	10139781	rev	H	

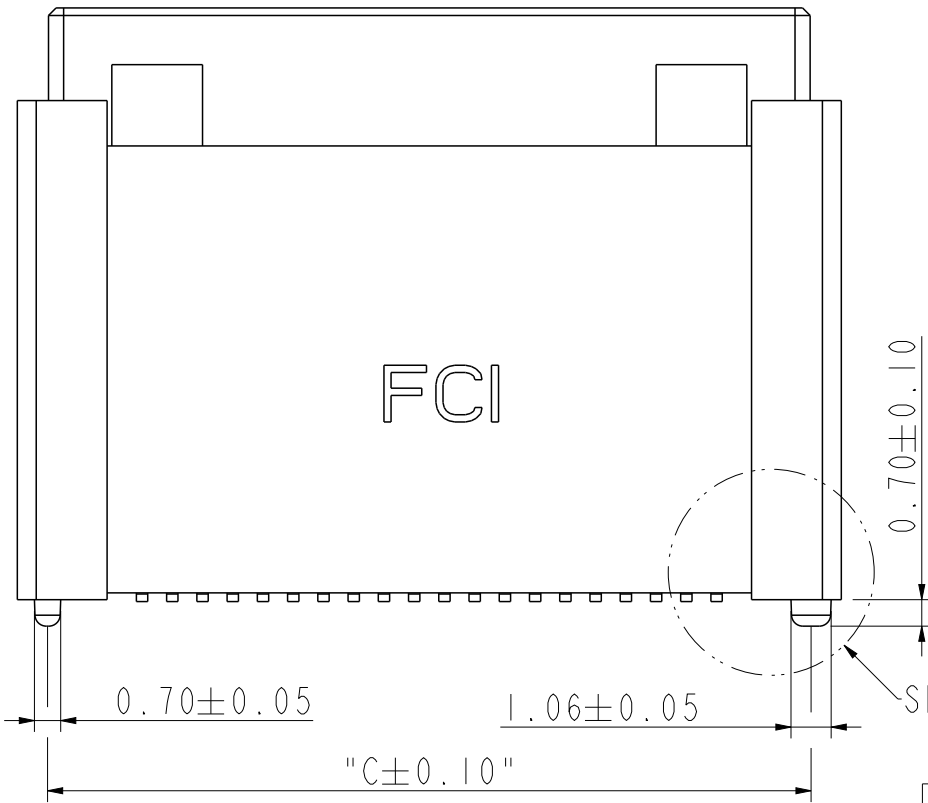
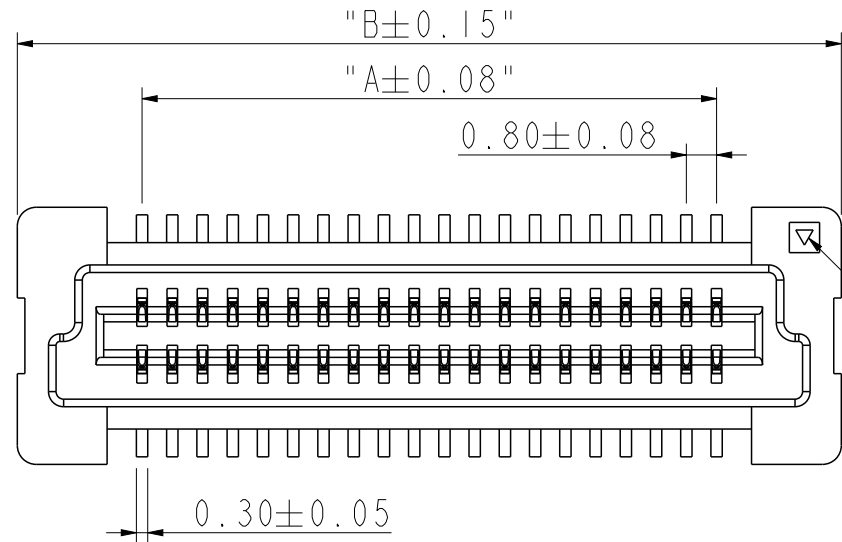
A

B

C

D

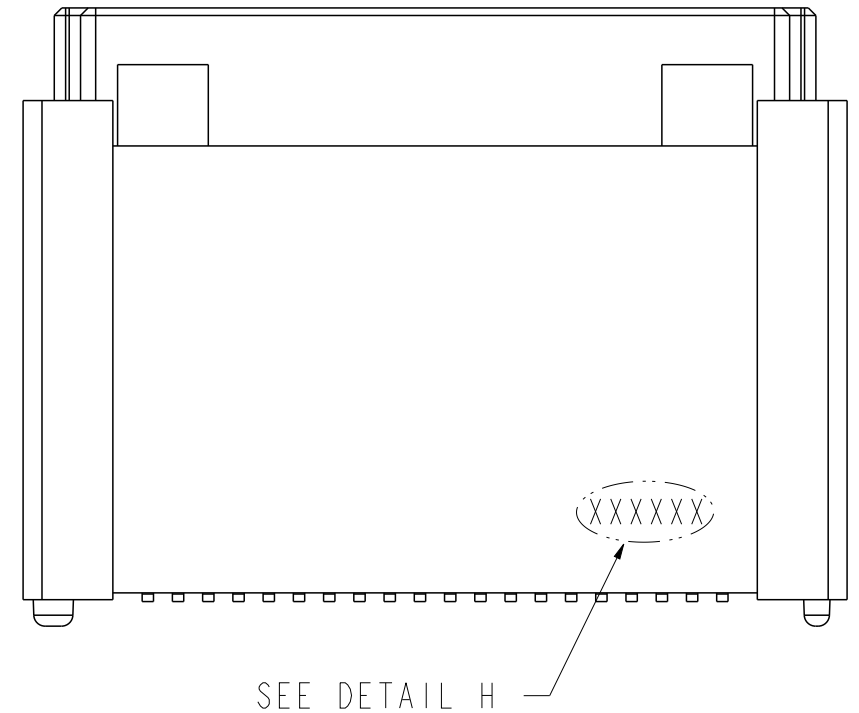
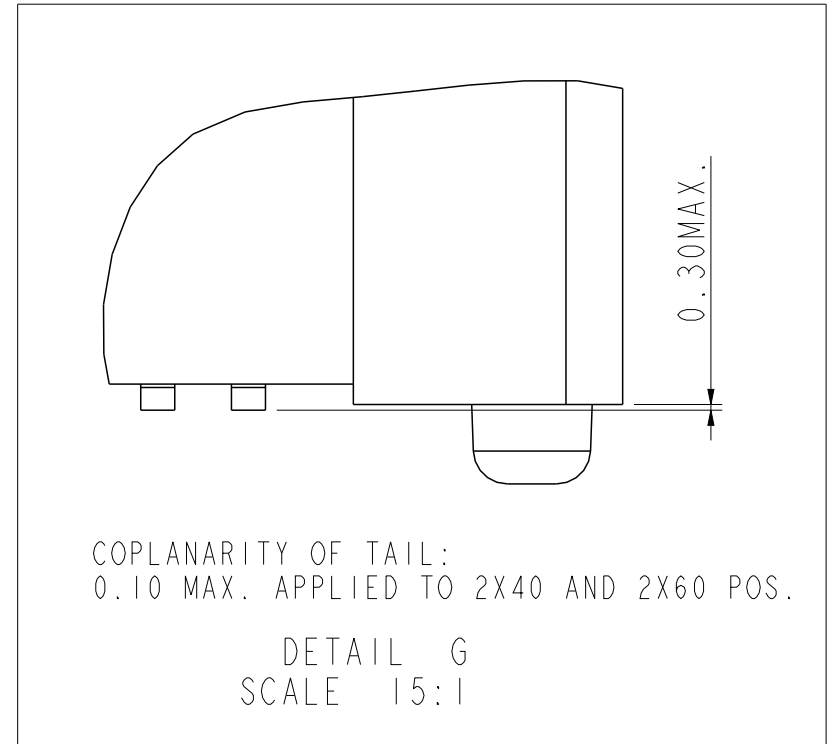
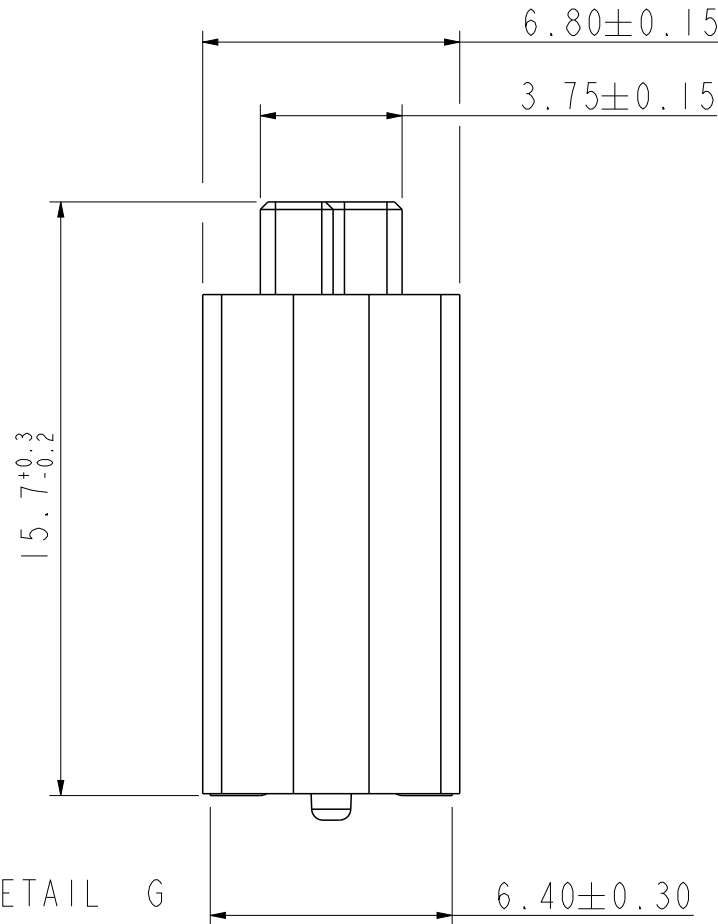
PRODUCT NO.	NUMBER OF POSITIONS	DIMENSION		
		A	B	C
10139781-044*****	2X20	15.2	21.8	20.2
10139781-064*****	2X30	23.2	29.8	28.2
10139781-084*****	2X40	31.2	37.8	36.2
10139781-104*****	2X50	39.2	45.8	44.2
10139781-124*****	2X60	47.2	53.8	52.2



DATE CODE: XXXXXX

DAY(01~31)
MONTH(01~12)
YEAR(00~99)

DETAIL H
SCALE 5:1

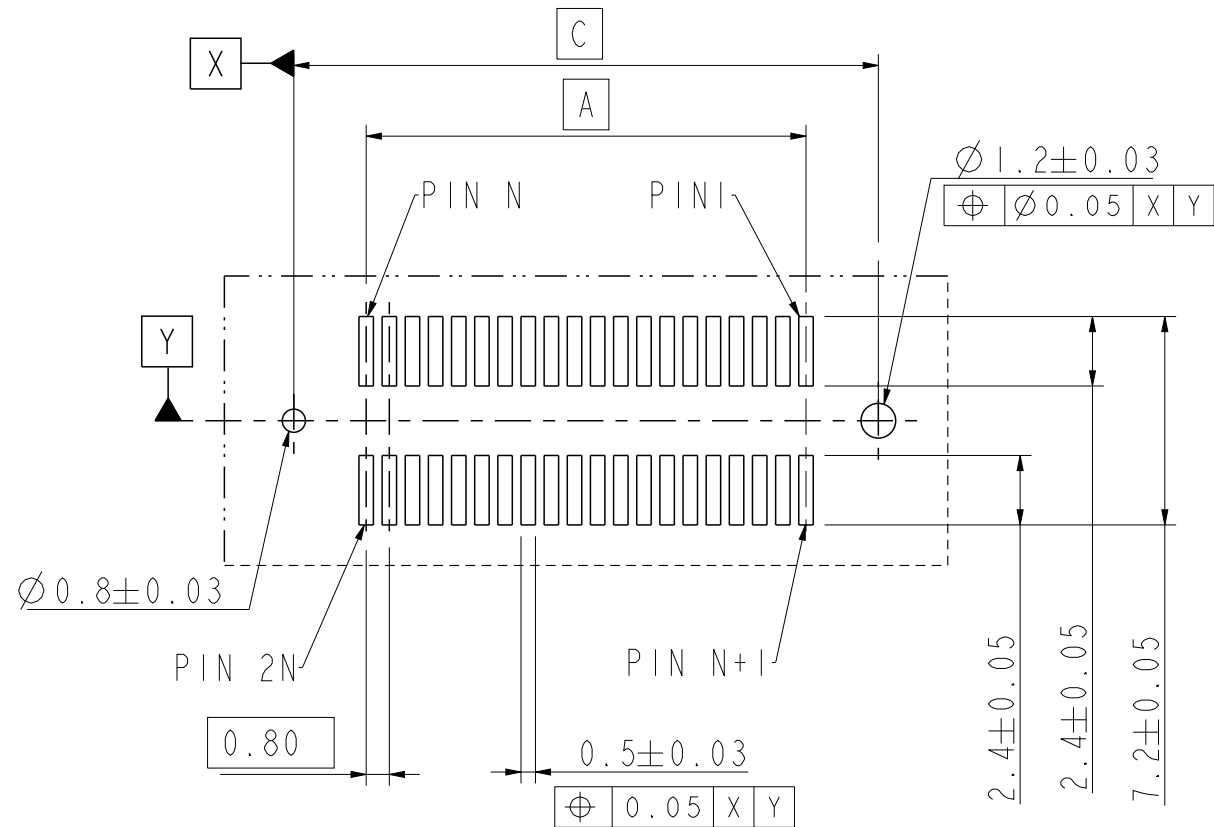


spec ref		-		dr		Eric Huang		2016/08/02		projection				size		A3		scale		5:1	
tolerance std		TOLERANCES UNLESS OTHERWISE SPECIFIED		eng		Bob Gu		2020/06/28						ecn no		ELX-N-37512-1					
ISO 406				chr		-		-						rel level		Released					
ISO 1101				appr		Tim Yao		2020/07/02						product family		-					
surface		linear		0.X		±0.3		Amphenol FCi		title		BERGSTAK+ 0.8mm RECEPTACLE CONN		dwg no		10139781		rev		H	
ISO 1302				0.XX		±0.15															
				0.XXX		±0.08															
		angular		0°		±2°				cat. no.		-		Product - Customer Drw		sheet 6 of 7					

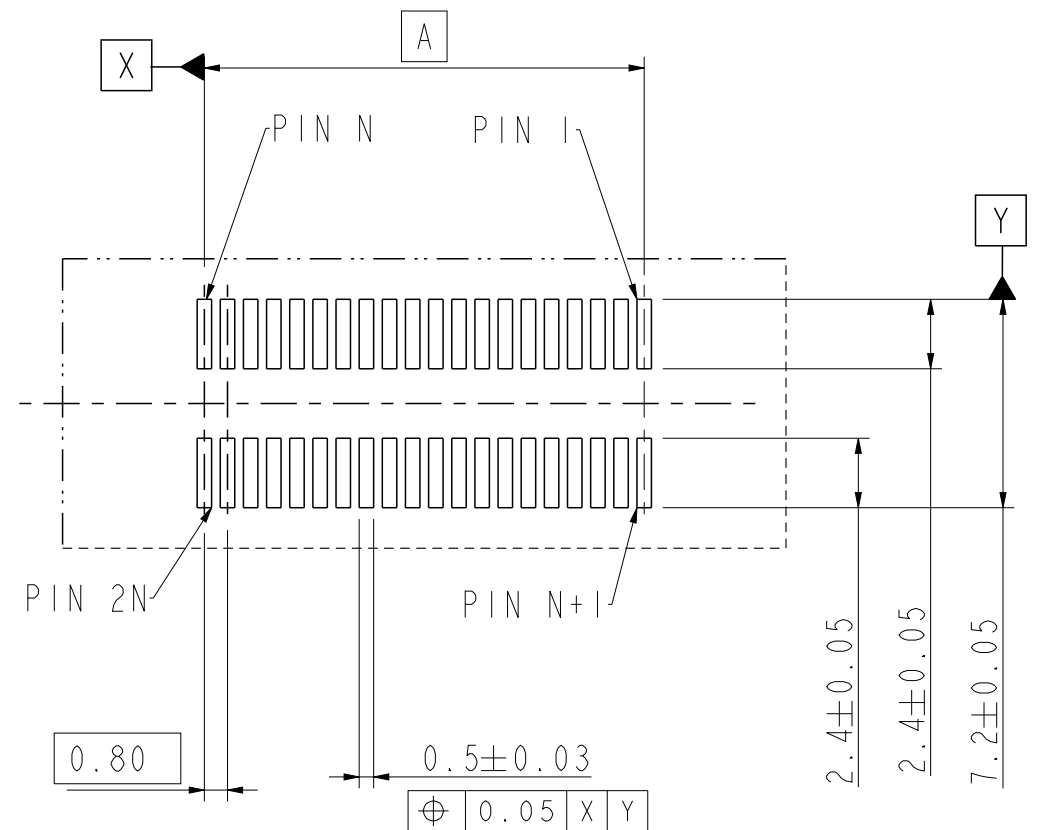
RECEPTACLE 2 & 3 & 4

Amphenol
FCi

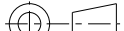


© 2016 AFCI



RECOMMENDED PCB LAYOUT WITH PEGS
FOR NO. OF POSITION 2X20 TO 2X60



RECOMMENDED PCB LAYOUT WITHOUT PEGS
FOR NO. OF POSITION 2X20 TO 2X60

spec ref -				dr Eric Huang		2016/08/02		projection		mm		size A3		scale 1:1			
tolerance std				eng Bob Gu		2020/06/28						ecn no ELX-N-37512-1					
ISO 406				chr -		-											
ISO 1101				appr Tim Yao		2020/07/02		product family -				rel level Released					
surface -  ISO 1302		linear		0.X		±0.3		Amphenol FCI				title BERGSTAK+ 0.8mm RECEPTACLE CONN		dwg no 10139781		rev H	
				0.XX		±0.15											
				0.XXX		±0.08											
angular		0°		±2°		cat. no. -		Product - Customer Drw				sheet 7 of 7					